

Replacing the Gateway 600 Keyboard

This package includes a replacement keyboard for your Gateway 600 notebook computer and these printed instructions.

Tools you need

You will need a small Phillips and a small flat blade screwdriver to replace the keyboard.

Preventing static electricity discharge

The components inside your computer are extremely sensitive to static electricity, also known as *electrostatic discharge* (ESD).

Caution



ESD can permanently damage electrostatic discharge-sensitive components in the computer. Prevent ESD damage by following ESD guidelines every time you open the computer case.

Warning



To avoid exposure to dangerous electrical voltages and moving parts, turn off your computer and unplug the power cord and modem and network cables before opening the case.

Before replacing the keyboard, follow these guidelines:

- Turn off the computer power.
- Wear a grounding wrist strap (available at most electronics stores) and attach it to a bare metal part of the computer.

Warning



To prevent risk of electric shock, do not insert any object into the vent holes of the notebook.

- Touch a bare metal surface on the back of the computer.
- Unplug the power cord and modem and network cables.
- Remove the battery.

Before working with computer components, follow these guidelines:

- Avoid static-causing surfaces such as carpeted floors, plastic, and packing foam.
- Remove components from their antistatic bags only when you are ready to use them. Do not lay components on the outside of antistatic bags because only the inside of the bags provide electrostatic protection.

Removing the keyboard



To remove the keyboard:

- 1 Follow the guidelines under “Preventing static electricity discharge” on page 1.
- 2 Shut down your notebook.
- 3 Remove the main battery and optional secondary battery.
- 4 Unplug the AC adapter and modem and network cables.

Warning



To avoid injury, disconnect the AC adapter and modem and network cables before removing the keyboard. Replace the keyboard before reconnecting power.

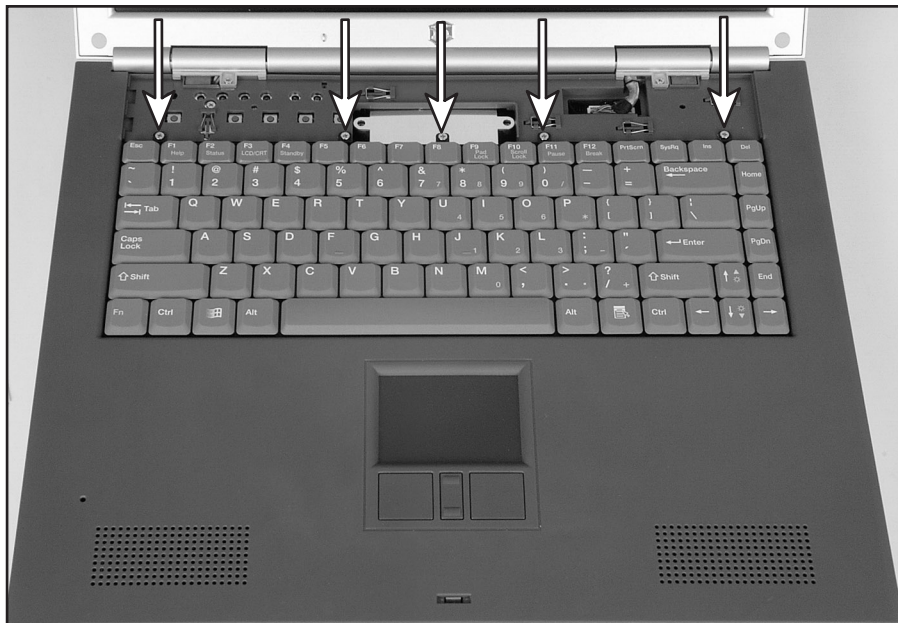
- 5 Open the LCD panel to the normal viewing position.
- 6 Insert the small flat blade screwdriver under the bottom right corner of the keyboard bezel and pry it up.



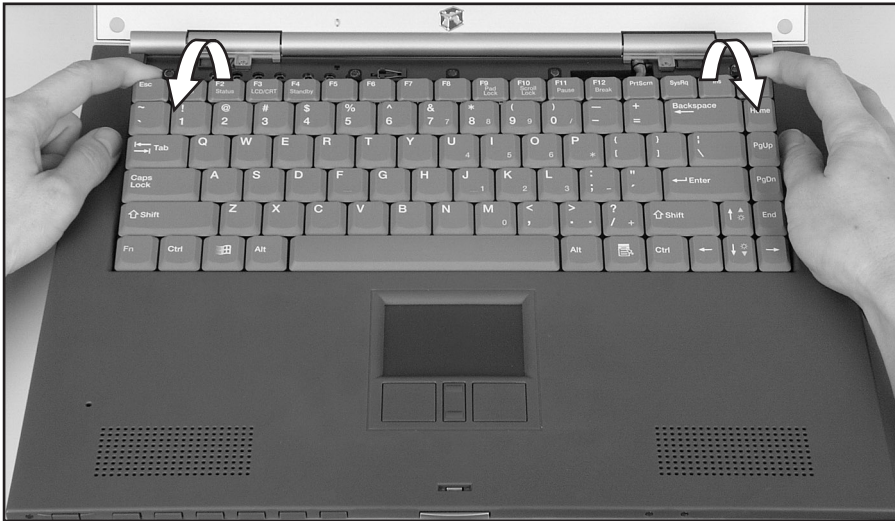
- 7** Pull the bezel off the notebook. You will hear small snapping sounds as the bezel comes away from the notebook. Be careful to not break off the tabs found on the left end of the bezel.



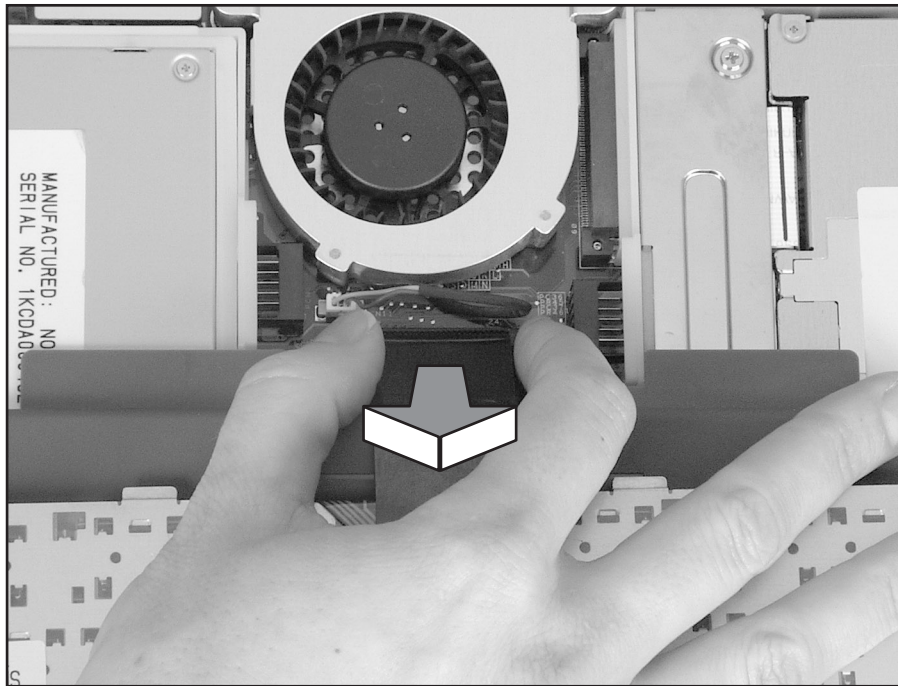
- 8** With a small Phillips screwdriver, remove the five keyboard screws and place them in a safe place.



- 9 Remove the keyboard by raising the back edge, then slowly rotating it toward you so it lies **keys-down** on top of the notebook. Be careful to not damage the LCD panel.



- 10** Disconnect the keyboard by lifting the keyboard connector using two fingers. Be careful to not touch or damage any other components.



Installing the keyboard



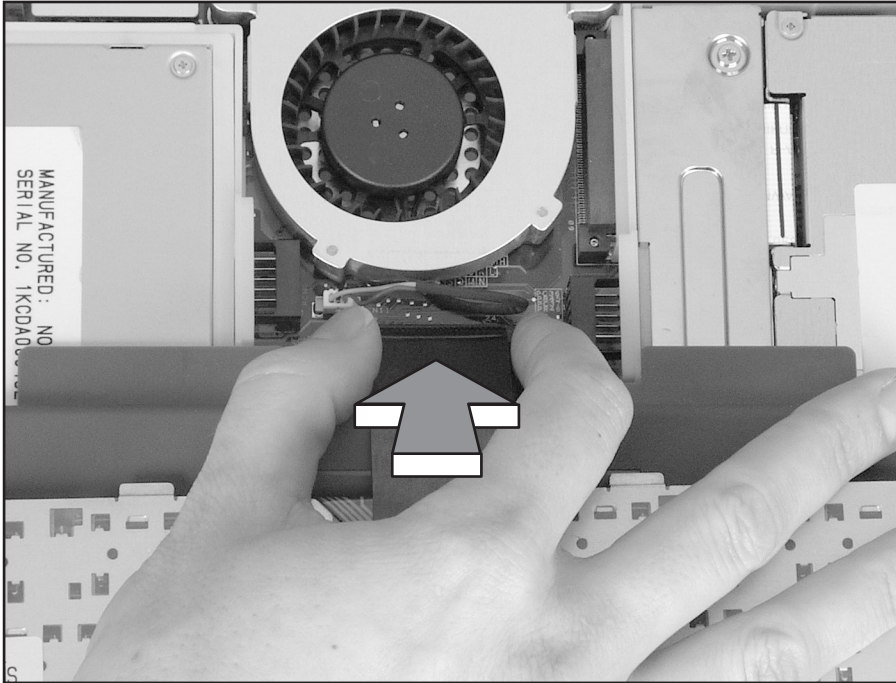
To install the new keyboard:

- 1 Place the new keyboard **keys-down** on the notebook with the space bar away from you.
- 2 Insert the keyboard plug, found on the end of the keyboard cable, onto the keyboard connector.

Important

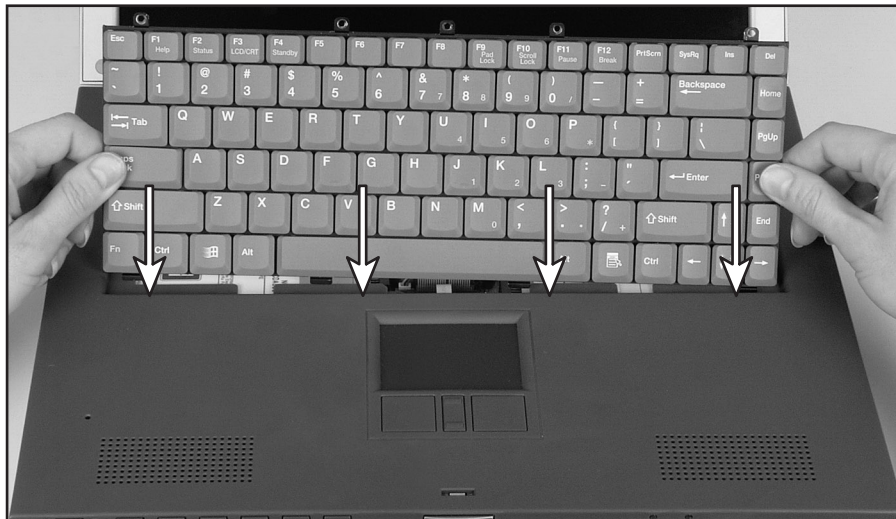


The outside of the keyboard plug goes around the keyboard connector. The plug is correctly oriented if the cable is not twisted.



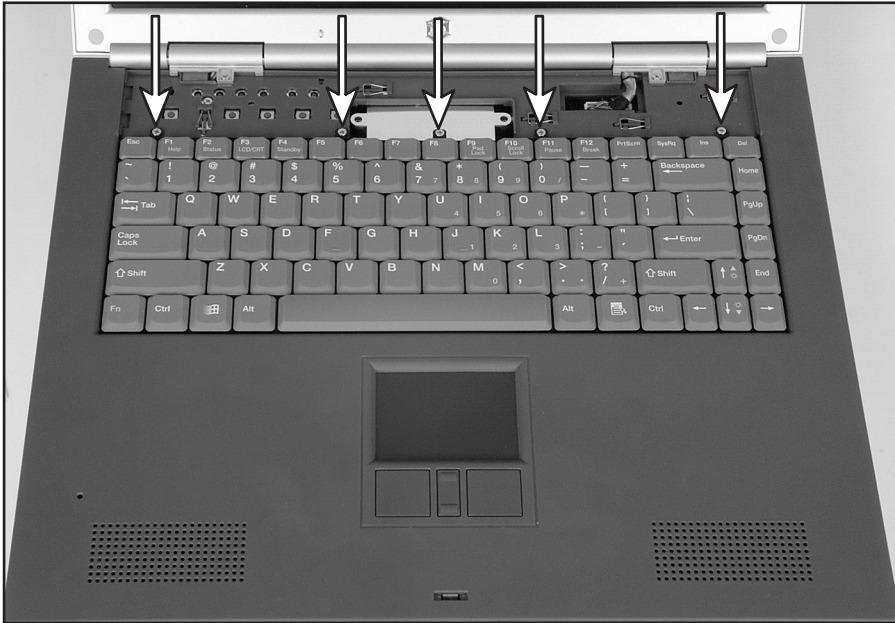
- 3** Rotate the keyboard toward the LCD panel until the keyboard is almost face-up.

- 4 Insert the front of the keyboard under the palm rest.



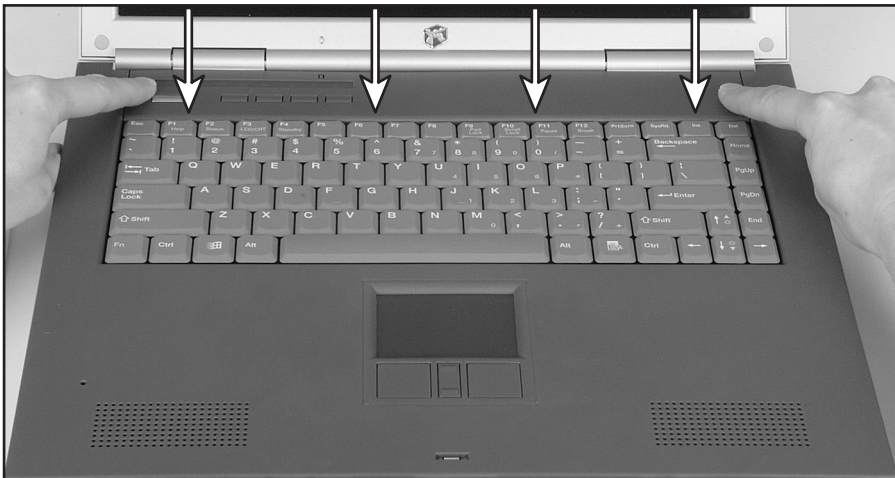
- 5 Gently press the keyboard down until it is flat all the way across. The keyboard should easily fall into place. Be careful to not damage the LCD panel.

6 Replace the five keyboard screws.



7 Slide the two tabs found on the left end of the bezel under the notebook frame.

8 Press down on the bezel in several places until it clicks in place.



The bezel is correctly mounted when you can run your finger along the bezel and find no loose spots. The bezel should be flat all the way across. If the bezel is mounted incorrectly, complete the instructions under “Replacing the bezel” on page 9.

Warning



If the bezel is not correctly replaced, your notebook could be damaged when you try to close the LCD panel.

- 9 Replace the main battery and optional secondary battery.
- 10 Plug in the AC adapter and modem and network cables.
- 11 Turn on the notebook.



Replacing the bezel

If the bezel was mounted incorrectly, complete the following procedure.

Warning



If the bezel is not correctly replaced, your notebook could be damaged when you try to close the LCD panel.



To replace the bezel:

- 1 Insert the small flat blade screwdriver under the bottom right corner of the keyboard bezel and pry up.
- 2 Pull the bezel off the notebook. You will hear small snapping sounds as the bezel comes away from the notebook. Be careful to not break off the tabs found on the left end of the bezel.
- 3 Slide the two tabs found on the left end of the bezel under the notebook frame and press down on the bezel in several places until it clicks in place.



Technical Support

Refer to your user's guide for Gateway Technical Support information.

Safety, Regulatory, and Legal Information

Refer to your user's guide for important safety, regulatory, and legal information.

© 2002 Gateway, Inc. All rights reserved. Gateway, Gateway Country, the Gateway stylized logo, and the black-and-white spot design are trademarks or registered trademarks of Gateway, Inc. in the United States and other countries. All other brands and product names are trademarks or registered trademarks of their respective companies.

MAN US RPL 600 YGR KB INST R0 04/02



8508489