

DELL™ LATITUDE™  
freedom from business as usual



**LATITUDE E6500 and E6400  
REVIEWER'S GUIDE**



# TABLE OF CONTENTS

<b>E-Family Overview</b>	3
<b>Key Features</b>	4
<b>All Day Computing</b>	5-13
All Day Battery Life	6
Connectivity	7-8
Dell ControlPoint	9-13
<b>Inspired Design</b>	14-22
Durable Design	15
Dell Flash Ultra Performance	16
Usability	17
Docks and Peripherals	18-22
<b>Peace of Mind</b>	23-28
Dell Services	24-25
Security	26-28
<b>Total Control of Ownership</b>	29-32
Systems Management	31
The Green Side of Latitude	32
<b>Core Technologies</b>	33-36
New Performance Architecture	34
Graphics	35-36
<b>Product Gallery</b>	37-49
E6500 Product Views	38-42
E6500 Technical Specifications	43
E6400 Product Views	44-48
E6400 Technical Specifications	49
Important Information	50



## LATITUDE E6500, E6400

### freedom from business as usual

At last business class notebooks that pull their own weight and work like they're supposed to, free from hassles and constant overhauls. Sleek and stylish, the E6500 and E6400 deliver mobile computing that works as hard as you do, anytime, anywhere. It's freedom from business as usual.

#### IT Customer Viewpoint

I'm caught in a difficult place. It's hard to balance the desires and demands of our workforce with the concerns of managing our systems smoothly and securely. I should be able to manage our notebooks anywhere in the world without leaving my desk. My company data should be just as safe on the other side of the world as in the home office. I'm tired of notebooks that let my end-users down, forcing me to scramble and quickly find replacements.

#### End User Customer Viewpoint

I'm sick of big, heavy notebooks that sometimes connect to wireless networks and other times leave me stranded. And I'm tired of having my workflow interrupted because my battery lets me down. I need a notebook that looks good and doesn't slow me down with a difficult-to-use keyboard or trackpad. If I have trouble using it, it's worthless to me.

#### Latitude E-Family Answer

Dell is inspired by you. You're tired of compromise, so we designed a family of notebooks where sacrifice was no longer necessary. No detail went overlooked, inside or out. We didn't stop until we created a notebook that is both rugged and beautiful. That can keep you working anywhere, anytime. With a battery that might even outlast you. No need for frantic calls to IT because Latitude's established leadership is designed to deliver superior manageability to help provide IT control. Dell ProSupport services offer a globally consistent customer-driven support portfolio and our new Dell ProSupport Mobility Services offer the broadest solution focused on protecting your notebooks and data. So now you can get more done and your business moves forward. With Latitude E6500 and E6400, you're finally free from business as usual.



Latitude E6400 and E6500 notebooks deliver powerful enterprise-ready features. The best of everything you need in a notebook for ultimate user and IT productivity empowered by leading-edge IT simplification technologies. Latitude is designed for ultimate productivity and low total cost of ownership.



## Key Features:

- Redesigned for optimum performance at every level. Thin and light with robust hinges and latches for improved durability. Plus a new keyboard designed for accuracy, durability and comfort and also available with a backlit option.
- All-day battery life that works as hard as you do— the E6400 can get up to 19 hours\* with a 9-cell battery and optional battery slice.
- Anytime, Anywhere wireless connectivity<sup>1</sup> supports all current wireless technology like Wi-Fi, mobile broadband, Bluetooth® 2.1, and is built for emerging technologies such as WiMAX™, High Performance Wireless-N.
- Seamless transitions from on-the-move to desktop with new Latitude family docking solutions.
- Featuring Intel® vPro™ technology for enhanced manageability and performance.
- Dell ControlPoint creates an awesome user experience by simplifying your Wi-Fi connections. Make adjustments to management profiles without taxing your system memory.

### Target Market

CIO, IT Mangers, IT Generalists and Specialists, Small Business owners and End Users.

### Primary Usage

Desktop Replacement  
Mobile/Remote Office

<sup>1</sup>Subject to wireless provider's coverage area. Mobile broadband subscription required, additional charges apply.



ALL DAY COMPUTING\*



*I can stay connected and productive virtually anywhere and everywhere.<sup>1</sup>*



<sup>1</sup>Subject to wireless provider's coverage area. Mobile broadband subscription required, additional charges apply.

## All Day Battery Life

Dell introduces a dramatic step forward in battery life: batteries designed to enable all-day computing.\*

The 9-cell battery frees you to work up to a full 8-hour work day\*—or go up to 16+ hours\* with the addition of our new battery slice.

Battery slice adds up to 8+ hours\* of battery life and can be used in conjunction with the 6-cell or 9-cell battery.

Introducing new technology like LED backlit displays and customized battery settings to achieve a full day charge through new Dell ControlPoint software

Extend your battery service with optional battery replacement service during your 3-year Limited Hardware Warranty\*.

Take advantage of short charge time opportunities with **ExpressCharge** -- charges the primary battery to 80% in about an hour.\*



12-cell battery slice can also be charged stand-alone



LED battery life and health gauge





## Connectivity

Free yourself from cables with our excellent antenna design supporting Mobile Broadband\*, Wireless-N in addition to emerging wireless technologies like Bluetooth 2.1, Ultra Wide Band and WiMAX.

### Integrated Dell Mobile Broadband\*

(cellular data) mini-cards provide wide area data connectivity via national cellular networks. With average download speeds of up to 7.2 Mbps\*, you can remain productive wherever you go. Both EV-DO Rev A and HSPA solutions available; tri-band HSPA solutions support international roaming capability.



### Dual 5-band mobile broadband antennas

provide support for all major worldwide frequency bands. International travelers who roam between the U.S. and Europe can get full 3G speeds wherever they go. Furthermore, you get investment protection for after point of sale card purchases or even next generation card upgrades – the antennas to support are already there.

Mobile broadband cards have built-in GPS functionality that can be used with location-based applications like Garmin™ and Microsoft® Streets & Trips.

### Wi-Fi Catcher™

Wireless on/off switch and sniffer button allows user to easily find out if a connection is available, even when the system is off. Use the switch to turn off antennas when not in use to save battery life. Easy to check for available networks without opening or turning on the notebook.



## Connectivity

### Wi-Fi

#### Intel Centrino Mobile Technology

Latitude E6500/E6400 offer Intel® Centrino® Mobile technology featuring the Intel WiFi Link 5100 or 5300 Draft 802.11n Wi-Fi cards, Intel Core™ Processor and Intel 965PM or GM chipsets. Intel Centrino Mobile Technology delivers excellent wireless performance while enabling great notebook battery life.



#### Dell Wireless LAN

Latitude E6500/E6400 feature a choice of Dell Wireless Wi-Fi solutions with the option of either the Dell Wireless 1397 802.11g or the Dell Wireless 1510 Draft 802.11n Wi-Fi cards.



Personal Area Networks enable connection to devices and peripherals such as keyboards, mice, printers, scanners and wireless docking stations within a PAN.

#### Dell Wireless 370 Bluetooth Wireless

The Dell 370 card features the latest Bluetooth version 2.1 + EDR (Windows® XP OS) technology with a throughput of 3Mbps\*. The Dell 370 offers firmware upgradeability to the forthcoming Bluetooth 2.1 update for Windows Vista® OS.



Compared to the previous Dell 360/Bluetooth 2.0 combination, the new Dell Bluetooth 2.1 offerings can provide longer battery life and easier pairing for Bluetooth 2.1-capable devices.

Allows cable-free computing with Bluetooth enabled devices such as keyboards, mice, PDAs, headsets & mobile phones.

Dell's Wi-Fi and Bluetooth solutions are designed to work together with minimal interference. The optional Dell Wireless 370 Bluetooth module incorporates its own dedicated antenna and radio to help achieve optimal performance.





## The Tools You Need

New Dell ControlPoint software puts you in complete control. It provides a single access point with intuitive navigation to easily configure your notebook the way you need it.

With a single hot key combination, you have access to the settings you need: power management, displays and devices, connections, security and system information. Consistent visual user interface throughout all these applications means easy, natural interaction for end users.

## User Selectable Modules with Tight Administrative Controls

IT managers have the option to install all of the modules or pick and choose specific modules for their custom system images. IT managers can also control user configurable options, create company specific branding, and enable company help files and automated links to additional web content.



## Dell ControlPoint

### Power Settings

The ControlPoint Power Settings module provides a wide-ranging set of power management configuration, alerting capabilities and sleep modes.

### Battery Status

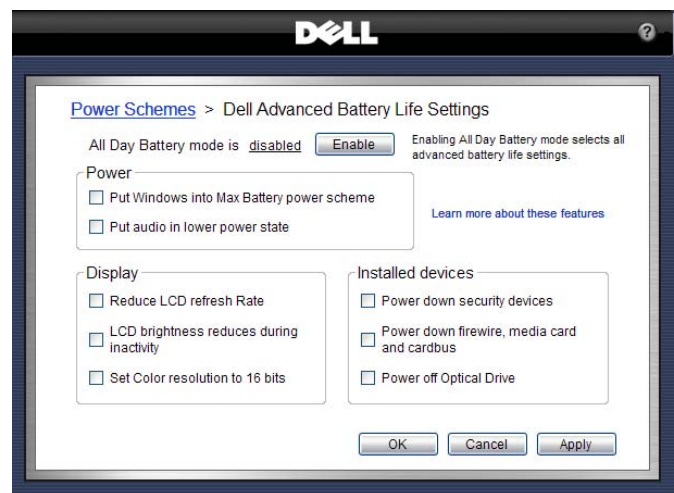
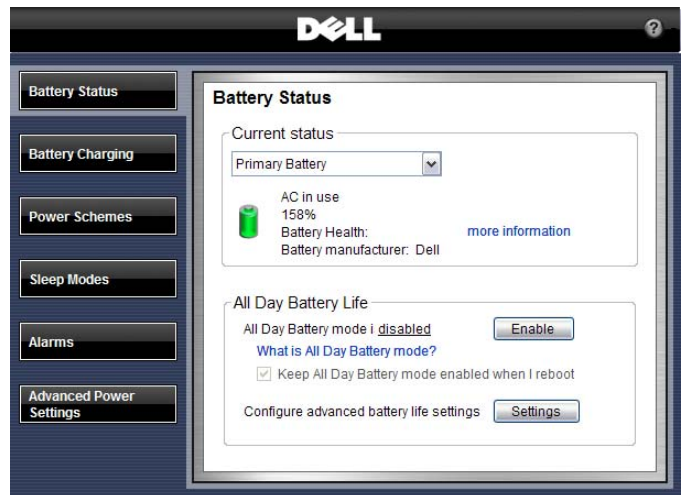
Quickly view battery status, available charge and health. Users can also easily configure advanced power settings to maximize battery life.

### Power Scheme and Sleep Mode

Choose the preset All Day Battery Mode to maximize your battery life

Custom-configure power schemes to work the way you want to work

Sleep modes can be quickly configured along with standby and hibernate settings



## Display and Devices

The Dell ControlPoint Display & Devices module provides a variety of configurable settings for your display as well as other devices attached or installed with your system. Some key configurable features include the presentation mode with projectors, ambient light sensor and keyboard backlighting capabilities.

## Keyboard Hotkeys

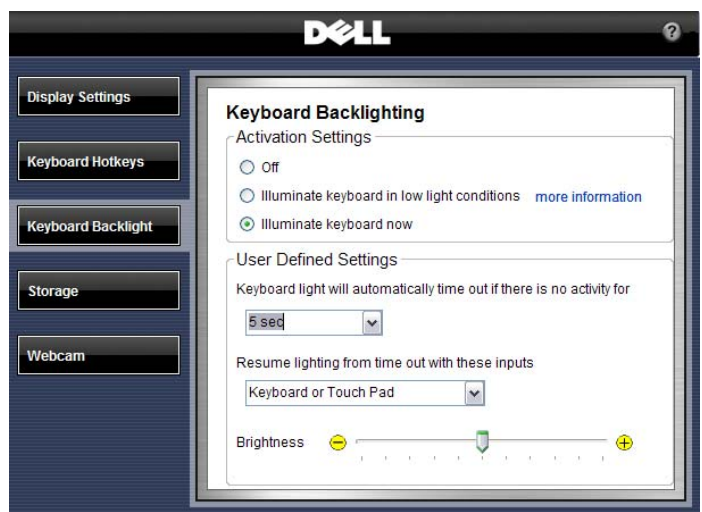
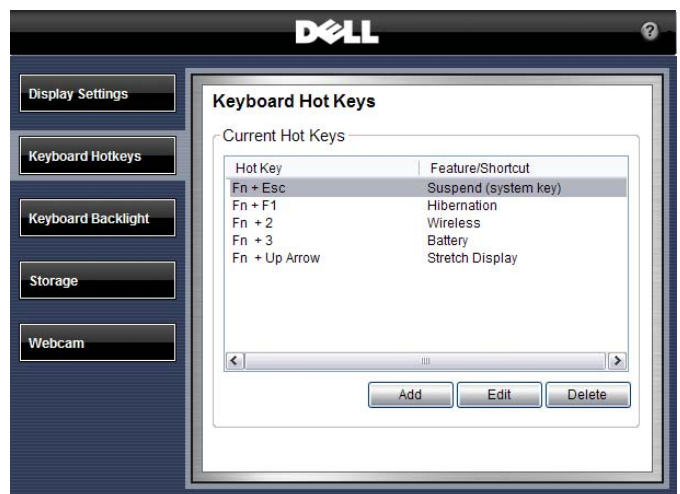
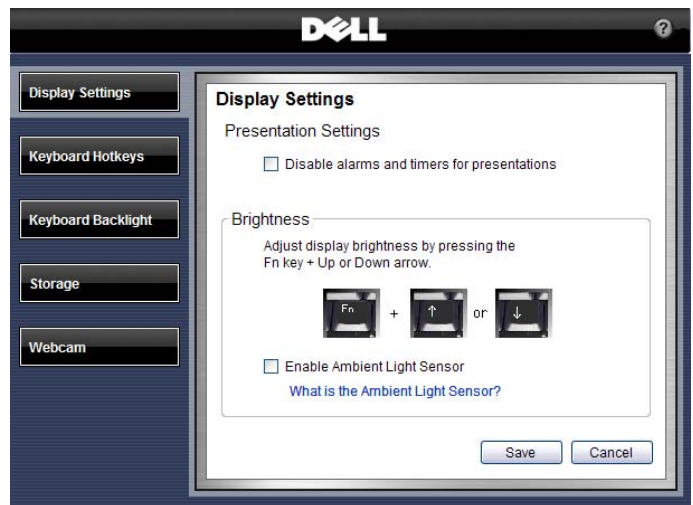
Customers can easily set up a series of custom hot keys to meet their individual work environment requirements



**See your work in a whole new light.**

LED Backlit keyboards allow for easier work in darker settings.

Use ControlPoint to easily configure your backlit keyboard to automatically adjust to ambient light.



## Dell ControlPoint Connections Manager

For fast and easy connections to any device or network, the Connections Manager module provides a comprehensive communications management environment: Ethernet, Dial-Up, Wi-Fi, Mobile Broadband\* and GPS.

Users can also enable & disable any of the radios on their notebook – Wi-Fi, Bluetooth, UWB, GPS and Mobile Broadband\*.

## Location Profiles and Administrative Controls

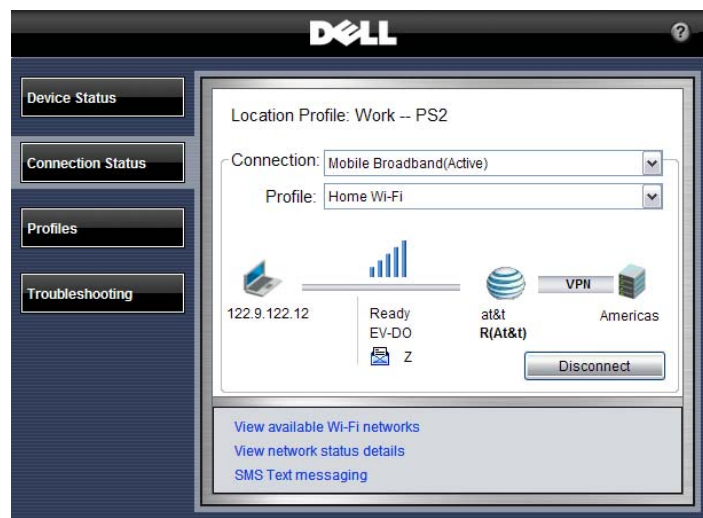
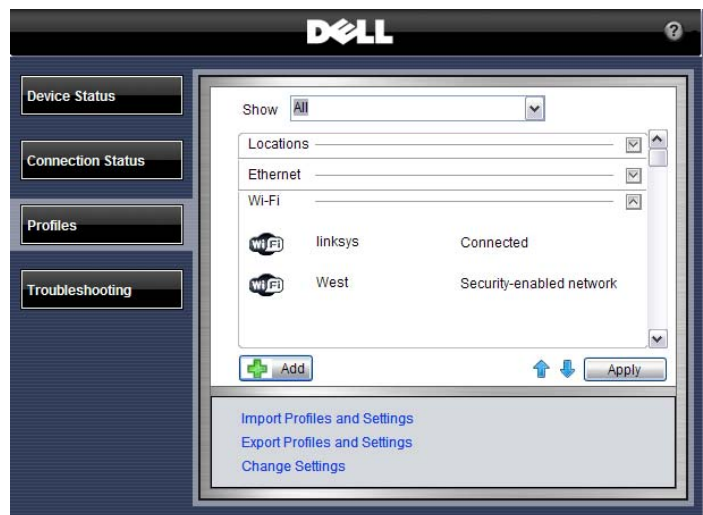
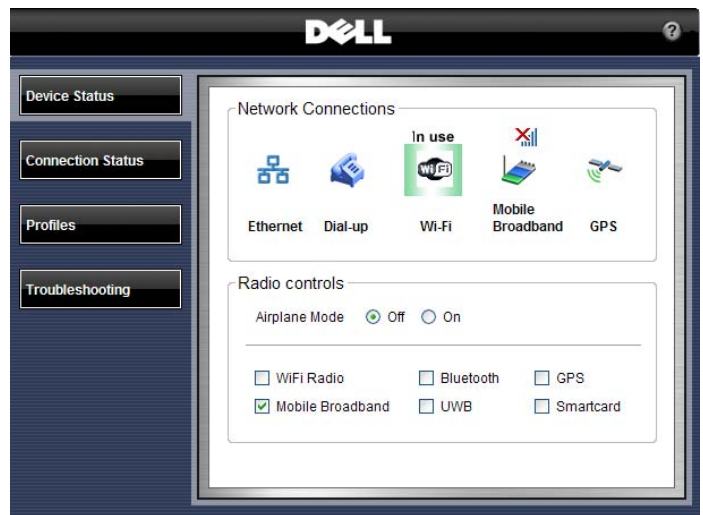
Create multiple mobile Profile Settings such as printer, browser, VPN and network, as well as mobility settings for adapter and profile switching.

Define, export, and import usage profiles. Customize printer setup, application launch, drive mapping, and more.

Administrative controls with the ability to limit user configurable options.

## Enhanced Diagnostics and Administrative Tools

- Simple and advanced configuration and status dashboard
- Enhanced multi-network connection diagnostics and event logging
- Hardware diagnostics for all devices
- Error and Connection Status log
- Profile import/export and locking





## Dell ControlPoint Security Center

As more critical data becomes mobile the need for enhanced security is vital. The Dell ControlPoint Security Center module provides access to use authentication, encryption, fingerprint readers and smartcard technologies.

### Security Status

Quickly view system security status

### Manage Logins and Passwords

Require fingerprint for login

Set a pre-boot password

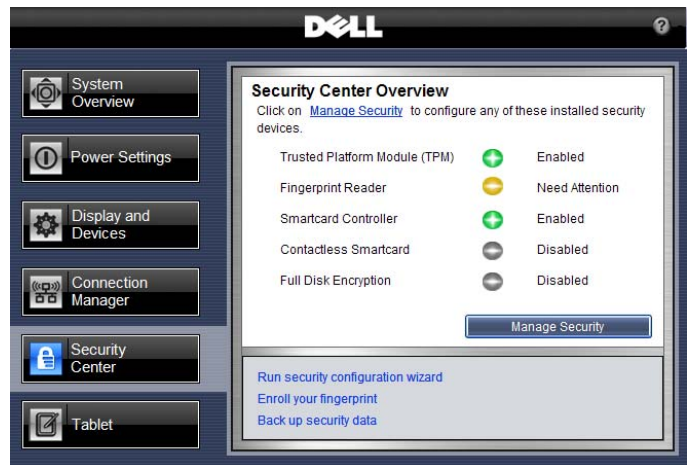
Manage Windows® password settings

### Manage Data Protection

Set hard drive password

Manage document vault

Manage encryption





INSPIRED DESIGN.



*My notebook should work as hard as I do.*



## Stunning, Durable Design

No detail went overlooked. Latitude E6500 and E6400 delivers sleeker and smarter notebooks that stand up to tough conditions.

Premium materials and finishes create a notebook you can be proud to carry.

New paint process helps provide long-lasting premium paint finish.

Exceptional durability with redesigned robust hinges & latches.

Strike Zone™ helps improve hard drive protection in the event of a fall by dissipating shock.

Our 7200rpm hard drives now come standard with Free Fall Sensors.

Keyboard durability focus means E-Family is designed for improved keycap retention and screen printing.

Notebooks designed to run cooler. Our new inverted motherboard helps improve thermal design and accessibility for easier service.



E6500 with new hinge design and paint finish



## Dell Flash Ultra Performance Solid State Hard Drive

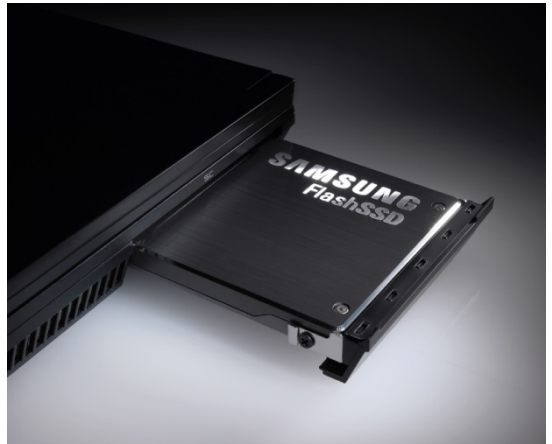
Durability, reliability and exceptional performance. With overall system performance that exceeds a 10K RPM desktop HDD<sup>2</sup>,

Dell Flash Ultra Performance SSD takes notebook productivity to a new level.

- Overall system performance gain is triple what you get when moving from a 5400 RPM to a 7200 RPM notebook HDD.
  - 10% system performance improvement from 5400 RPM to 7200 RPM notebook HDD<sup>2</sup>
  - 35% system performance improvement from a 5400 RPM notebook HDD to Ultra Performance SSD<sup>2</sup>
- 22% improved system performance over a 7200 RPM performance notebook HDD<sup>2</sup>

With no moving parts, SSD is designed to provide a quantum leap forward in durability and reliability.

- Predicted reliability more than 3x better than a standard hard drive<sup>3</sup>
- Shock tolerance is 8.5 times better than standard notebook hard drive in operating mode<sup>4</sup>



E6400 with SSD

<sup>2</sup> Based on SysMark 2007 Benchmark tests performed by Dell Labs in January 2008. Actual performance will vary based on configuration, usage and manufacturing variability.

<sup>3</sup> Based on Mean Time Between Failure (MTBF) of 2M for Ultra Performance SSD vs. 550K for standard Dell 2.5" HDD, per Dell HDD spec.

<sup>4</sup> Based on Operating Shock tolerance of 1500G for 0.5ms for Ultra Performance SSD vs. 175G for 0.5ms for standard Dell 2.5" HDD, per Dell HDD spec.



## Outstanding Usability

Excellent usability with precision-tuned backlit keyboards designed to deliver accuracy, comfort, and outstanding feel.

You're never out of touch. Experience real-time collaboration through optional integrated webcam, microphone, Mobile Broadband\* and superior Wireless-N antenna design.

Latitude notebooks are designed for the ultimate user experience with one click access to all user settings with new Dell ControlPoint software.

DisplayPort is a next generation digital display interface designed for the latest PC graphics and flat panels.

DisplayPort enables digital picture quality on all flat panels and supports larger screens with smarter cable management. With DisplayPort, users can connect to any display from legacy CRT monitors to the latest digital displays.

The first version of DisplayPort provides over twice the capacity of single-channel DVI over the same number of wires through a smaller connector, and it enables the use of up to two 30" external displays.



E6400 with webcam and digital microphone



## Expanding Mobile Experience

Redesigned sleeker, smaller docks and peripherals deliver a seamless experience between your desktop and mobility – including the new E-Port and notebook stand – designed for the smallest footprint.

**E-Port Plus** offers Dual Digital Monitor capabilities along with legacy ports - The non-compromise station designed for enhanced usability at desk supports hot & warm docking.



E-Port Plus side and back views



**E-Port** is a space-saving port replicator for graphics as well as latest ports. Suitable for home and office environment enables to conveniently connect to your desk peripherals.



E-Port side and back views



**E-Legacy Extender** is a lightweight (0.45lb, 0.2kg) adapter that can be attached to the bottom of the notebooks adding parallel, serial, PS/2 and 2 USB connectors.



E-Legacy Extender back view





## E-Flat Panel Stand

The Integrated Flat Panel Stand is an adjustable stand designed for the new Latitude E-Port and E-Port Plus. It accepts Dell Flat Panels via the Dell Quick Connect connector (default) as well as standard VESA mount (requires screws).



E-Flat Panel Stand with dual flat panel monitor desktop configuration



E-Flat Panel Stand front and side views with E-Port Plus



## E-View Laptop Stand

This stand provides an innovative way to use the notebook LCD versus an external monitor at the end users desk. E-Family notebook stand is adjustable and enables the user to elevate the LCD panel to a comfortable position. It also requires significantly less desk space than a dock and external monitor.



E-View with dual monitor desktop configuration



E-View side view

## E-Monitor Stand

The Basic Monitor Stand is an accessory of the E-Port and E-Port Plus that enable use of any LCD flat panel monitors and CRT monitors.



E-Monitor Stand back view



## More Innovative Mobile Solutions

The Latitude E6500 and E6400 LCD bezels have been designed specifically to hold new custom-designed 3M privacy filters seamlessly. No more sticky, messy tabs.



E6400 with custom-designed 3M privacy filter

Attach a CoolSlice designed to fit the bottom surface of your E6400/E6500 to make it more comfortable to use the notebook on your lap or soft surfaces like a couch.



E6400 with CoolSlice

E-Media Bay offers the flexibility of a second hard drive or connect an optical drive via the eSATA port on your E6400 or E6500.

Leave your cell phone charger at home. USB PowerShare is a new Dell feature that allows you to charge or power peripherals from the USB port of the notebook when the notebook is not in use.



E-Media Bay

New Dell M109S Pocket Projector has a tiny form factor and runs from the power of the notebook – no extra power cord to carry. (Coming in September)



USB PowerShare denoted with a lighting bolt icon



Sneak peak picture of Dell M109S Pocket Projector



## Cases

New Latitude cases are designed to optimize mobility with a sleek new look, soft grip handles, seatbelt grade straps, EVA compression molded foam protection, custom hardware and useful inside pockets.

New Sleeves are designed with top grade neoprene.



Laptop Sleeves



Executive Leather



Deluxe Nylon



Slim Nylon



PEACE OF MIND IS PART OF THE PACKAGE.



*My data should be mine and mine alone.*





## Dell ProSupport Mobility Services

The broadest solution for protecting your notebooks and data. Committed to enabling your mobile workforce, minimizing downtime and protecting your investment.

**Asset Protection Options** enable your mobile workforce while protecting your investment with Extended Battery Service during your 3-year Limited Hardware Warranty\*, CompleteCare Accidental Damage Service\* and Laptop Tracking and Recovery.

**Data Protection Options** featuring Remote Data Delete, Hard Drive Data Recovery and Certified Data Deletion. Helps you feel more secure knowing Dell can track it and remotely delete your sensitive data to help prevent potential loss of valuable data or recover data when you have a failed hard drive and did not back up your system.

### ***Solve asset issues while keeping end users productive on the road.***

CompleteCare Accidental Damage Service\* provides coverage for notebooks that have encountered liquid spills, electrical surges, drops, falls or extreme temperatures.

Laptop Tracking and Recovery can assist in finding a lost or stolen laptop, via tracking software loaded on the system.

Remote Data Delete allows remote initiation of a disk drive data wipe in the event the system is lost or stolen.

Extended Battery Service aligns battery coverage with your laptop usage, and provides one additional replacement battery during years 2 or 3 of coverage.



Availability and terms of Dell Services vary by region. For more information, visit [www.dell.com/servicesdescriptions](http://www.dell.com/servicesdescriptions).



## ***Deployment Services - Helps customers more effectively execute Windows Vista® migrations and E-Family deployments***

Dell ImageDirect is cross-platform to help ensure a streamlined transition to the new Latitude E-Family from legacy Dell products. With ImageDirect, your image is only a few mouse clicks from being ready to deploy as opposed to the few weeks inherent with traditional image make-ready.

Dell Client Migration and Deployment Services deliver the upfront planning and automated implementation that can reduce cost, helps minimize disruption to ongoing productivity by reducing 88% of the desk-side technician time and by eliminating an estimated 70% of the network traffic associated with deployment<sup>5</sup>.

**Dell Automated Deployment (DAD)** patent pending tools and processes that minimize technician intervention thereby allowing the technician to spend just minutes at a PC instead of hours.

- **Dell Data Direct™ (DDD)** captures and migrates complete end-user accounts, including OS and application settings, printers, data files, and more.

**Dell Desktop Management Service** enables IT organizations to manage mobile, distributed workforces via the web anytime from virtually anywhere in the world. This powerful, scalable and cost effective Software-as-a-Service (SaaS) platform model is activated with a simple Internet connection. Our comprehensive set of software services are delivered via a single, integrated Web-based management console.

- **Asset Management** – automated tracking of software, hardware, and software licenses for all desktops and laptops, regardless of location.
- **Patch Management** – Helps protect corporate and remote users through a fully automated or targeted patch management approach.
- **Anti-Malware & Virus Management** – Provides management of advanced antivirus, antispymware, anti-malware and firewall solutions from world class vendors including Symantec™, McAfee® and Microsoft®.
- **Data Encryption** – Encrypts and protects data on an online or offline PC to help prevent its compromise or misuse allowing organizational control of that data even when the user has lost control of the device.
- **Online Backup** – Designed to deliver safe, secure, and automated backup over the Internet powered by Iron Mountain® software and storage at fully redundant offsite facilities.
- **Software Distribution** – Drives adherence of corporate standards by automating the distribution of new applications and upgrades as well as helping to maintain uniform configurations throughout the organization including support for Faronics' Deep Freeze.



<sup>5</sup>Based on an internal assessment of select Dell customers compiled from October 2006 to October 2007.

## Simply Secure

Information technology has become a backbone for our customers. It is a daily tool for real time collaboration as well as crucial business data storage. At the same time, our world has become extremely mobile: valuable files are sent over the networks or carried around the planet on notebooks. As a result, there is a growing threat for data loss or leakage.



Whether you need enhanced physical protection or easy to manage protection for your critical data, Dell's security offering can help. We are committed to simplifying security deployment, usage and maintenance, in order to allow smaller businesses to acquire relevant security and larger organizations to implement at low total cost of ownership impact.

## Deploy Faster

The complexity of IT can slow down even the most tightly run organization. By speeding up deployment and configuration, you can reclaim wasted time and redirect it toward growing your business.

Dell can deliver a fully secured system directly from the factory that covers all four key aspects of security: System Protection, Access Control, Data protection and Malicious Threats prevention.

With Dell's Custom Factory Integration (CFI), we can deliver pre-configured systems including non-Dell standard hardware and proprietary software right out of the factory.

CFI offers security features such as custom asset tags, and StopTrack or TLS labels.



## Protect Better

Dell wants to give you total control by building simplicity into everything we do. Our products and services are fully manageable, making it easy for you to proactively maintain and support.

The Latitude E-Family systems offer several options to protect your data and hardware better. Hardware Encrypted Data protection is available, can be activated within a few seconds centrally and can be much safer than software based encryption.

The Latitude E6500 and E6400 include a new feature called Dell ControlVault, which is an innovative security chip.

### **Dell ControlVault key features are:**

- Single location for end users credentials such as passwords and biometric templates.
- Credentials are securely located in firmware, outside of the attack vector of malicious applications.
- Provides capability to perform security processing/matching in firmware outside the scope of malicious applications.



## Prevent Smarter

You want to prevent security breaches into your business. But security is complex and there are many aspects to it. Choices are difficult to make, stable technologies cannot be identified, and you could suffer from skyrocketing costs and complexity.

Based on long-lasting technologies, Dell end-point security solutions enable you to protect business assets by including relevant and long term technologies in our notebooks.

The Latitude E6500 and E6400 are designed with these multi-factor authentication technologies:

- Standard smartcard reader
- New integrated contactless card reader supports leading edge technology from HID and is designed to enable the convergence of physical and logical access.
- Integrated fingerprint reader option
- New integrated FIPS 201 Certified fingerprint reader option on the E6500, which as an area sensor, can provide one of the highest possible quality finger print scans.

Furthermore, we make security easy for the user as well by providing easy to use software that supports multiple technologies through a single console in Dell ControlPoint Security Manager (see page 13 of this guide for more.)



Integrated FIPS 201 Certified fingerprint reader option on E6500



Integrated fingerprint reader option on E6400



TOTAL CONTROL OF OWNERSHIP



*I should be able to manage my notebooks  
anywhere in the world without leaving my desk.*





Latitude works like it's supposed to, with freedom from hassles and constant overhauls. It's the ultimate team player, letting you manage notebooks virtually anywhere in the world without leaving your desk. Finally, an IT investment that doesn't cost a fortune coupled with business-class service that is truly first class. Freedom from hassles with technology that gives you Total Control of Ownership.

Unplanned change costs your business time, money and people. Dell minimizes change to help you reclaim and refocus your resources.

Long product lifecycles and proactively managed product transitions help minimize costs and headaches. Long lifecycle and long overlap means customers have time to evaluate the new product, create a new image and plan the transition as fits their business needs.

Consistent configurations worldwide simplify global deployment and management.

Image stability is key. Carefully managed change means fewer image impacts. When change is unavoidable, Dell gives you the tools for early notification months before they happen.

Dell ImageWatch™ is a flexible and easy to use tool that enables proactive transition management for Dell customers.

### **Compatible peripherals, adapters, and docking**

Share accessories among users and among systems within the E-Family.



Latitude E6400 with E-Port Plus on E-View Laptop Stand



**The Dell Client Manager** console used in conjunction with Intel® Centrino® 2 with vPro™ technology can reduce the need for desktside visits for both troubleshooting, and system maintenance and migration.

Dell Client Manager can enable DASH, which is the new industry standard for secure out-of-band and remote management of desktop and mobile systems

Benefit from the Dell Client Manager's predictive hardware monitoring, streamline after-hour updates and help improve data security .



### **Built-in Management and Advanced Security**

The Latitude E6400 and E6500 notebooks can be configured with Intel® Centrino 2 with vPro™ technology. With Intel AMT 4.0, customers can scale Intel® AMT deployments with remote configuration and benefit from support for next generation management standards: WS-MAN and DASH 1.0.

#### **Remote configuration**

More convenient option for over-the-wire set-up

Allows transfer of Intel® AMT keys over the network during set-up

#### **New out of band management capabilities**

Client Initiated Remote Access (CIRA) allows client initiated, secure Out of Band (OOB) communication to the management console<sup>7</sup>

#### **Wireless manageability during sleep states**

Wireless management of notebooks even when asleep, hibernating or powered off<sup>6</sup>

#### **Supports next-generation management standards (WS-MAN & DASH 1.0)**

More capable, extensible, and secure than ASF  
Standardizes management interface between console and PC

<sup>6</sup> Requires AC Power

<sup>7</sup> Requires user to 'accept' any terms of service gateway and that the gateway remain open over a period of time.



## The Green Side of Latitude

Dell's environmental stewardship program drives to conserve product energy consumption, reduce or eliminate materials for disposal, prolong product life span and provide effective and convenient equipment recovery solutions. By streamlining business steps and processes, Dell minimizes stress on the environment while achieving speed, responsiveness and cost savings that can be passed along to customers.

### Product Concept and Design – with Environment in Mind

Dell's focus on improving environmental performance starts with our Design for the Environment (DfE) approach. When designing new systems, engineers consider environmental factors such as material composition of components, amount of materials used, energy efficiency as well as design attributes that aid in recycling.

The Latitude brand has a history of leadership in delivering green notebooks:

- 1st Notebook to achieve EPEAT Gold (Latitude D630)
- 1st Notebook to implement Energy Star 4.0 Standard (Latitude portfolio May 2007)

### Minimize Energy Consumption

- 1st Energy Star 4.0 Compliant Notebooks
- Industry Leading Energy Smart Power Management Settings on all Latitude Notebooks
- Energy Efficient Technologies (CPU, LED Backlight etc.)
- 87% Averaged Efficiency for E-Family External Adapters

### Environmentally-Preferable Materials

- WW RoHS (Lead-Free) Compliant since July 2006
- China RoHS Compliant
- Mercury Free LCD Panels (Latitude XT, E6400, E6500, E4300, E4200)
- Dell Latitude E4200 will be the first Halogen-Reduced Dell notebook that offers a motherboard containing “halogen-free” laminates (per JPCA ES-01-1999), as well as “halogen-free” chassis plastics and fan housing/impeller.

### Minimize Waste

- Recycled Packaging with 25% Post Consumer Cardboard
- Asset Recovery and Recycling Services



# CORE TECHNOLOGIES



## New Performance Architecture

### Intel® Core™ 2 Duo Processor

Dell Latitude E6500 and E6400 are equipped with Intel® Core™ 2 Duo mobile technology, featuring the Intel PM45 Express chipset. You get powerful mobile dual-core processors with 3MB or 6MB Level 2 cache and up to 8GB\* of 800MHz dual-channel DDR2 system memory\*.

Intel® Centrino® 2 processor technology provides a forward leap in wireless connectivity, battery life and performance. What's more, thanks to halogen-free and lead-free manufacturing and a breakthrough 45nm design, users enjoy true energy efficiency. Intel® Centrino® 2 processor technology helps meet Energy Star requirements without sacrificing performance.

### Chipset and Memory

Intel® PM45 Express Chipset features:

- Support for up to 8GB\* system memory and for dual memory channels and DDR2 800MHz memory\*
- 1066MHz front side bus
- Intel Active Management Technology 4.0
- Serial ATA hard drive support
- Up to 6 PCI express ports
- Small footprint (size)

### Dual Channel DDR2 Memory\*

DDR2 offers dual-channel capability for additional bandwidth and performance, reduced power consumption and scalability to help increase performance with processor and chipset bus architecture.

### PCI-Express (PCI-E) Technology

Serial I/O and Graphics Interconnect provide high performance (up to 8GB/sec bandwidth) backwards compatibility with PCI implementation. PCI-Express is expected to keep pace with processor and I/O advances for the next 10 years or more, so it is designed to address your technology for the foreseeable future.



## Graphics

The Latitude E6500 and E6400 provide a choice of Intel integrated graphics\* and a discrete NVIDIA solution.

**Mobile Intel® Graphics Media Accelerator 4500MHD** brings the next generation benefits of dialed up performance, power management and support for new technologies.

Intel GMA 4500MHD helps deliver a next generation video and 3D experience:

- Clear and accurate video playback with crisp details.
- Support for advanced features like Picture-in-Picture,
- Use new video display connectors HDMI and DisplayPort
- Full hardware decode enables smooth playback of next generation HD AVC, VCI, MPEG2 content.
- View weave and jitter-free playback of static and fast-moving objects with SD and HD de-interlacing which applies multiple fields to construct progressive frames.
- Experience rich 3D graphics applications with Microsoft® DirectX® 10 and DXVA 2.0 – new industry graphics feature and acceleration technologies
- More accurately scale images to fit different display resolutions with Panel Fitter 2
- Efficient and intelligent balancing of shared system memory usage between graphics and other applications with DVMT 5.0

Users can experience the latest power conservation features of Intel GMA 4500MHD. Intel® Graphics Power Modulation Technology helps extend battery life through dynamic switching of render core voltage and frequency. Graphics Render Standby puts render engine into standby during periods of inactivity and dynamically lowers render core voltage.





The Latitude E6500 and E6400 are available with the NVIDIA® Quadro® NVS 160M\* for a great combination of reliability, manageability and performance.

**NVIDIA® Quadro® NVS 160M\*** delivers the latest visual computing technology for business applications:

- Accelerates 2D and 3D functionality in business applications like Microsoft® Office 2007 and Adobe® Acrobat®
- Accelerated graphics performance helps enhance productivity when running graphics-intensive applications
- NVIDIA unified architecture dynamically allocates processing power thereby delivering higher performance than prior Quadro NVS generations
- PureVideo® HD technology delivers a great combination of high-definition video decode acceleration and advanced post-processing that delivers smooth video, accurate color, and great image scaling for DVD playback.
- Multiple-display architecture allows users to spread their work across multiple displays and maximize productivity through advanced desktop and application management features
- GPU zoom helps crisply display the page, including text, shapes, images, at any magnification level
- Full Microsoft® DirectX® 10 support with full Shader Model 4.0 support delivers premium levels of graphics realism
- NVIDIA® PowerMizer® 8.0 Technology balances user's need for longer battery life and performance. Intelligent and dynamic power management helps to save battery life by reducing power consumption of unused circuitry.

NVIDIA® Quadro® NVS 160M\* is essential for the ultimate Microsoft® Windows Vista® experience by delivering an exceptional experience with Windows® Aero™ features such as Flip 3D, Windows Sidebar, and transparent windows. Quadro NVS helps increase productivity with fast Windows Vista desktop response time and efficient multi-tasking.



# Product Gallery



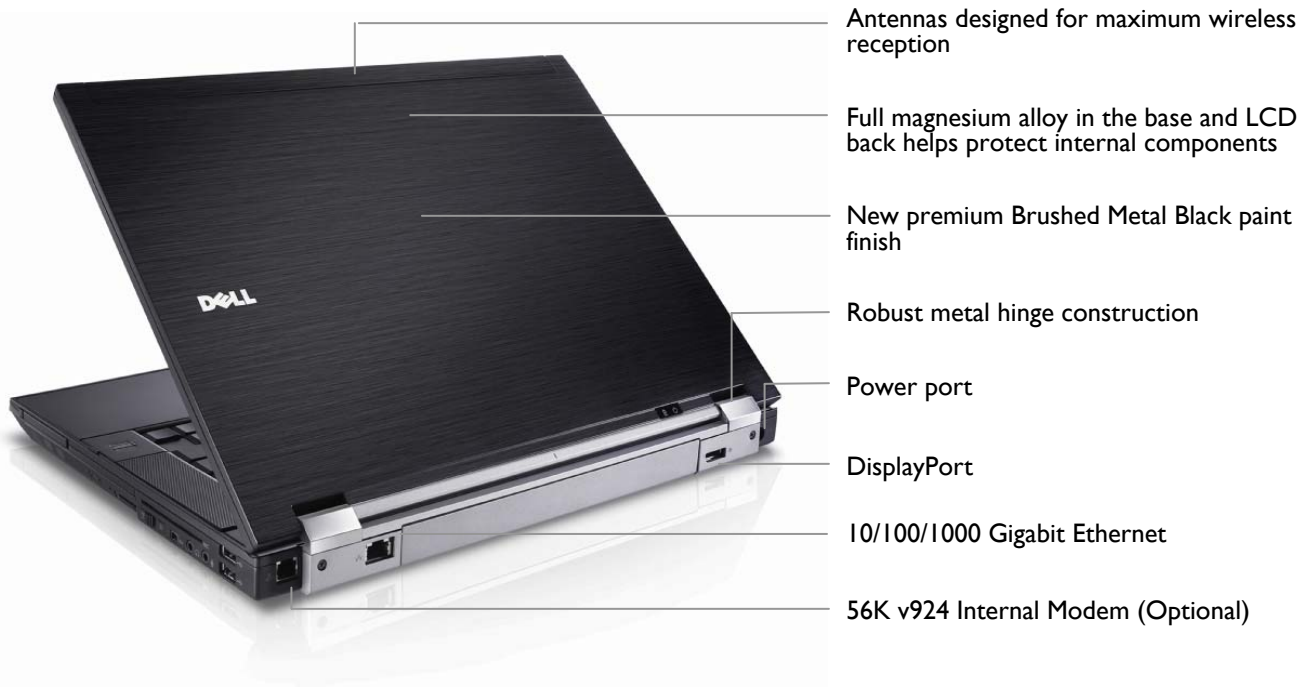
## E6500 Weight, Dimensions and Top View Detail

Preliminary weight starting at:  
5.17lbs/2.34kg\* with a 4-cell battery

Preliminary Dimensions:  
Width: 14.1"/358mm  
Depth: 10.1"/257mm  
Height: 1.08-1.3"/27.4-33.3mm



## E6500 Front and Back View Detail



## E6500 Left View



5-in-1 card reader

Expresscard/54



VGA port

USB port with USB PowerShare

eSATA port (compatible with USB)

Steel reinforced lock slot



## E6500 Right View



E-Media Bay

PCMCIA slot



2 USB ports

Smart card reader

Headphone/speaker out ports

1394 port

Wi-Fi Catcher On/Off switch with network locator button

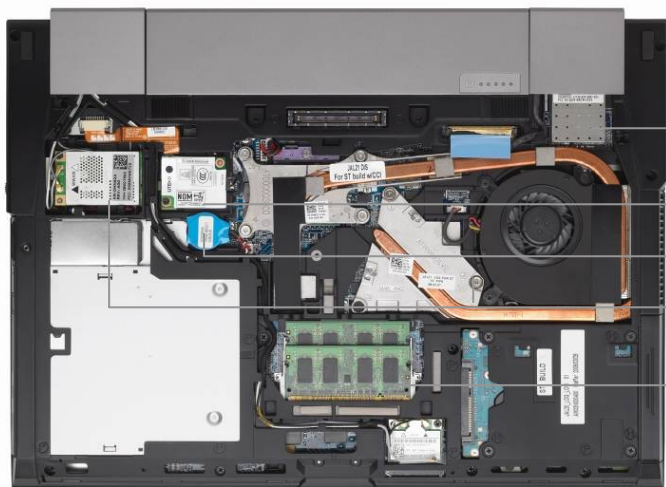




## E6500 Bottom View



- Primary Battery Bay
- Battery Charge/Health Gauge
- E-Family Docking Connector
- Bottom access panel with one screw access to memory DIMMs, wireless modules
- Primary Hard Drive Bay
- Strike Zone™ shock absorber



- Inverted motherboard helps improve thermal design and accessibility for easier service
- Bluetooth/UWB module
- WLAN
- Coin cell battery
- WWAN
- Memory DIMMS



**Processors**

Intel® Core™ 2 Duo Processor  
Up to T9600 (2.8GHz, 6MB L2 Cache)

**Operating System**

Genuine Windows Vista® Ultimate  
Genuine Windows Vista® Business  
Genuine Windows Vista® Business 64-Bit  
Genuine Windows Vista® Home Basic  
Genuine Windows Vista Ultimate or Business  
Downgrade, Genuine Windows® XP Professional  
installed\*

**Chipset**

Intel® 45 Express Chipset

**Displays**

15.4" UltraSharp™ Widescreen WUXGA (1920x1200)  
Display with Wide Viewing Angle  
15.4" Widescreen WXGA+ (1440x900) LED Display  
with Wide Viewing Angle  
15.4" Widescreen WXGA (1280x800) Display

**Memory**

Dual Channel DDR2 Memory\*  
Two Memory slots offering up to 8GB\*  
Memory Bandwidth: 800MHz

**Primary Storage**

Solid State Drive up to 64GB\*  
7200RPM Free Fall Sensor Hard Drive up to 250GB\*  
5400RPM Encrypted Hard Drive up to 120GB\*  
5400RPM up to 250GB\*

**Media Bay**

E-Family modular media bay: 8X DVD-ROM, 24X  
CDRW/DVD, 8X DVD+/-RW, second Hard Drive or  
TravelLite Module

**Graphics Cards**

NVIDIA® Quadro® NVS 160M! 256MB DDR3\* Mobile  
Intel® Graphics Media Accelerator X4500MHD\*

**Hardware-Enabled Systems Management**

Intel vPro™ Technology's advanced management  
features (optional, requires Intel Wifi® Link WLAN)

**Power**

90 Watt AC adapter with cord wrapping  
65 Watt Auto/Air/AC Travel Adapter  
4-cell, 6-cell or 9-cell extended life primary batteries  
12-cell high capacity battery slice (optional)

**Chassis**

Preliminary weight starting at: 5.17lbs/2.34kg\* with 4-  
cell battery  
Preliminary Dimensions:  
Width: 14.1"/358mm  
Depth: 10.1"/257mm  
Height: 1.08-1.3"/27.4-33.3mm

**Connectivity**

Dell ControlPoint Connection Manager

**Wired:**

10/100/1000 Gigabit Ethernet  
56K v924 Internal Modem (Optional)

**Wireless:**

Wireless LAN: Dell Wireless 1397 (802.11g), Dell Wireless  
1510 (802.11 a/g/n 2x2), Intel® WiFi Link 5100 [802.11a/g/n  
(1x2)], Intel WiFi Link 5300 [802.11a/g/n (3x3)]

Mobile Broadband\* & GPS: Dell Wireless 5720 (EvDO &  
GPS) Mobile Broadband mini card, Dell Wireless 5530 (Tri-  
band HSDPA 7.2/HSUPA 2.0 & GPS) Mini-Card

Bluetooth & Ultra-Wideband: Dell Wireless 370 Bluetooth®  
2.1, Dell Wireless 410 Bluetooth® 2.1 with UWB

**Security****Physical Security:**

Steel-reinforced Cable Lock Slots, Media Module and Hard  
Drive Locks.

**User & System Security:**

Smart Card Reader and Contactless Smart Card Reader  
Fingerprint Reader OR FIPS Fingerprint Reader (optional)  
TPM 1.2\*  
Optional Encrypted Hard Drive provides full disk encryption  
Dell ControlPoint Security Manager  
Dell ControlVault™

**Network Security:**

802.11 Wi-Fi Protected Access (WPA), 802.11i (WPA2),  
Virtual Private Networks (VPN) 802.1x with EAP modes and  
compatible with CCX 4.0

**Collaboration**

2 speakers, digital microphone  
Integrated VGA webcam (optional)

**Expandability****Slots:**

5-in-1 card reader; 1 Type I/II PCMCIA & Expresscard/54

**Docking:**

E-Port, E-Port Plus, E-Legacy Extender, E-Flat Panel Stand, E-  
Monitor Stand, E-View Laptop Stand, E-Media Bay

**Modular Options:**

E-Modular Hard Drive, E-Modular Optical Drive (DVD-  
ROM, CDRW/DVD, DVD+/-RW4) or TravelLite Module

**Ports**

1394, USB 2.0 (x3; x1 with USB PowerShare), eSATA, VGA,  
Display Port, RJ-11 (optional), RJ-45, Audio, Power,  
headphone/speaker out

**Input**

Dual-pointing, Backlit keyboard option



## E6400 Weight, Dimensions and Top View Detail

Preliminary weight starting at:  
4.3lbs/1.95kg\* with 4-cell battery

Preliminary Dimensions  
Width: 13.2"/335mm  
Depth: 9.38"/238.3mm  
Height: 1-1.2"/25.4-31mm



Integrated VGA webcam and digital microphone

Robust redesigned metal latch

Bright 14.1" display with LED option

Quick touch volume up, down and mute buttons

Hot Key to launch Dell ControlPoint console <Fn+F7>

Contactless Smart Card Reader

Precision-tuned keyboard with backlit option

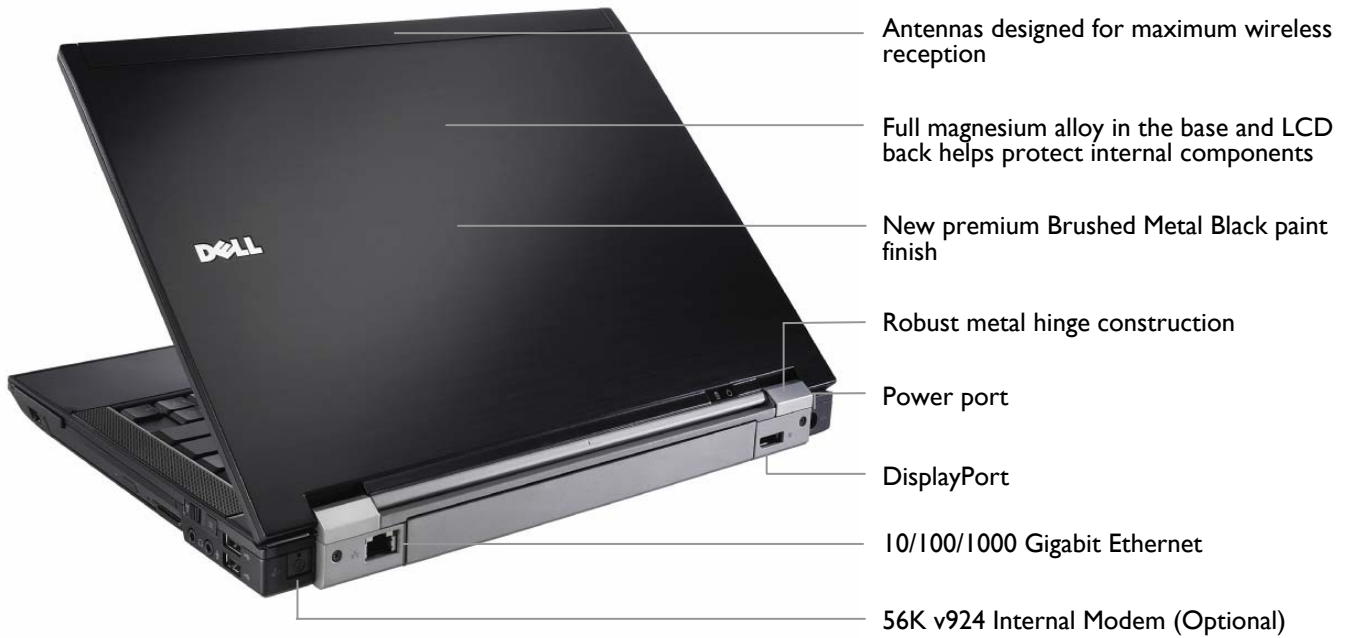
Ambient light sensor can be customized in Dell ControlPoint to adjust display and backlit keyboard brightness



Optional fingerprint reader is located at the bottom of the right speaker grill



## E6400 Back View Detail



## E6400 Left View



Smart card reader



USB port with USB PowerShare

eSATA port (compatible with USB)

VGA port

Steel reinforced lock slot



## E6400 Right View



E-Media Bay

PCMCIA (also available with Expresscard/54)

I394 port



2 USB ports

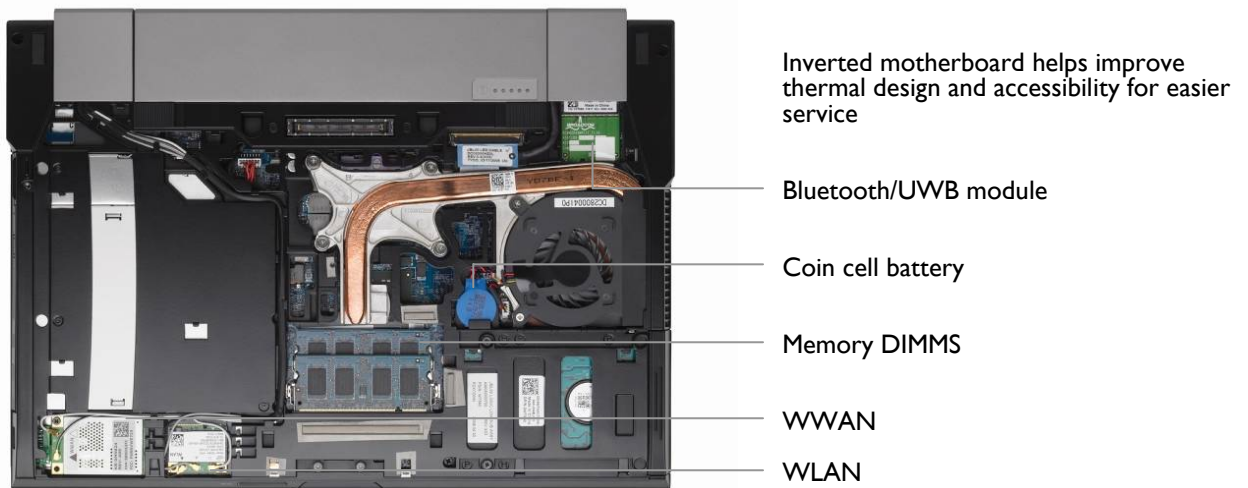
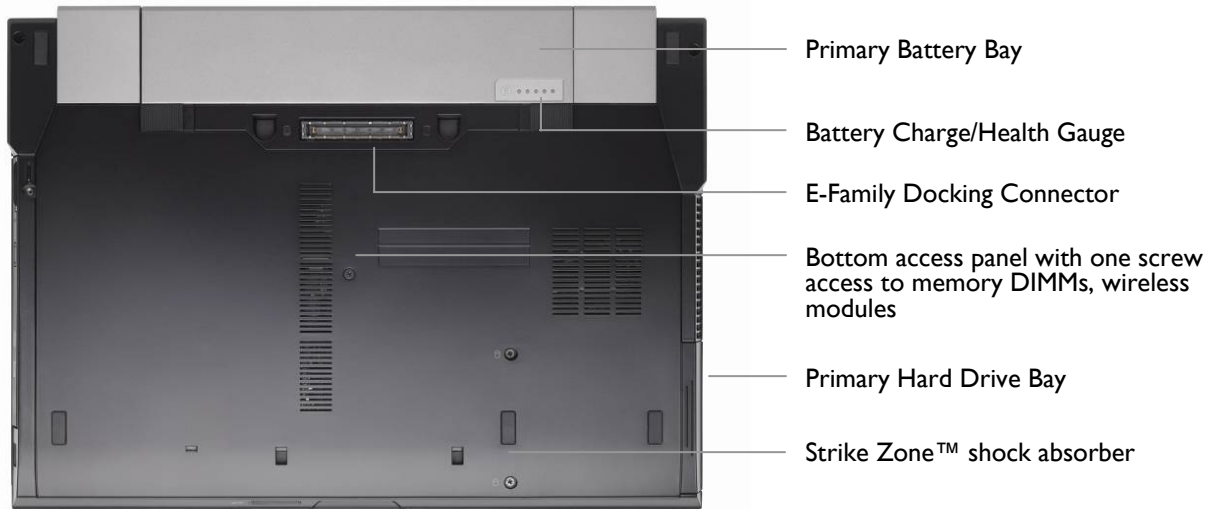
Wi-Fi Catcher On/Off switch with network locator button

Headphone/speaker out ports





## E6400 Bottom View



**Processors**

Intel® Core™ 2 Duo Processor  
Up to T9600 (2.8GHz, 6MB L2 Cache)

**Operating System**

Genuine Windows Vista® Ultimate  
Genuine Windows Vista® Business  
Genuine Windows Vista® Business 64-Bit  
Genuine Windows Vista® Home Basic  
Genuine Windows Vista Ultimate or Business  
Downgrade, Genuine Windows® XP Professional installed\*

**Chipset**

Intel® 45 Express Chipset

**Displays**

14.1" UltraSharp™ Widescreen WXGA+ (1440x900)  
LED Display  
14.1" Widescreen WXGA (1280x800) Display

**Memory**

Dual Channel DDR2 Memory\*  
Two Memory slots offering up to 8GB\*  
Memory Bandwidth: 800MHz

**Primary Storage**

Solid State Drive up to 64GB\*  
7200RPM Free Fall Sensor Hard Drive up to 250GB\*  
5400RPM Encrypted Hard Drive up to 120GB\*  
5400RPM up to 250GB\*

**Media Bay**

E-Family modular media bay: 8X DVD-ROM, 24X  
CDRW/DVD, 8X DVD+/-RW, second Hard Drive or  
Travelite Module

**Graphics Cards**

NVIDIA® Quadro® NVS 160M<sup>1</sup> 256MB DDR2\* Mobile  
Intel® Graphics Media Accelerator X4500MHD\*

**Hardware-Enabled Systems Management**

Intel vPro™ Technology's advanced management  
features (optional, requires Intel Wifi® Link WLAN)

**Power**

90 Watt AC adapter with cord wrapping  
65 Watt Auto/Air/AC Travel Adapter  
4-cell, 6-cell or 9-cell extended life primary batteries  
12-cell high capacity battery slice (optional)

**Chassis**

Preliminary weight starting at: 4.3lbs/1.95kg\* with 4-cell  
battery

**Preliminary Dimensions**

Width: 13.2"/335mm  
Depth: 9.38"/238.3mm  
Height: 1-1.2"/25.4-31mm

**Connectivity**

Dell ControlPoint Connection Manager

**Wired**

10/100/1000 Gigabit Ethernet  
56K v924 Internal Modem (Optional)

**Wireless**

Wireless LAN: Dell Wireless 1397 (802.11g), Dell Wireless  
1510 (802.11 a/g/n 2x2), Intel® WiFi Link 5100 [802.11a/g/n  
(1x2)], Intel WiFi Link 5300 [802.11a/g/n (3x3)]

Mobile Broadband\* & GPS: Dell Wireless 5720 (EvDO &  
GPS) Mobile Broadband mini card, Dell Wireless 5530 (Tri-  
band HSDPA 7.2/HSUPA 2.0 & GPS) Mini-Card

Bluetooth & Ultra-Wideband: Dell Wireless 370 Bluetooth®  
2.1, Dell Wireless 410 Bluetooth® 2.1 with UWB

**Security****Physical Security:**

Steel-reinforced Cable Lock Slots, Media Module and Hard  
Drive Locks.

**User & System Security:**

Smart Card Reader and Contactless Smart Card Reader  
Fingerprint Reader (optional)

TPM 1.2\*

Optional Encrypted Hard Drive provides full disk encryption  
Dell ControlPoint Security Manager  
Dell ControlVault™

**Network Security:**

802.11 Wi-Fi Protected Access (WPA), 802.11i (WPA2),  
Virtual Private Networks (VPN) 802.1x with EAP modes and  
compatible with CCX 4.0

**Collaboration**

2 speakers, digital microphone  
Integrated VGA webcam (optional)

**Expandability****Slots:**

5-in-1 card reader; 1 Type I/II PCMCIA OR Expresscard/54

**Docking:**

E-Port, E-Port Plus, E-Legacy Extender, E-Flat Panel Stand, E-  
Monitor Stand, E-View Laptop Stand, E-Media Bay

**Modular Options:**

E-Modular Hard Drive, E-Modular Optical Drive (DVD-  
ROM, CDRW/DVD, DVD+/-RW4) or Travel Lite Module

**Ports**

1394, USB 2.0 (x3, x1 with USB PowerShare), eSATA, VGA,  
Display Port, RJ-11 (optional), RJ-45, Audio, Power,  
headphone/speaker out

**Input**

Dual-pointing, Backlit keyboard option



## Important Information

**All Day Computing/Battery Life:** Preliminary results based on Dell lab testing. Varies by configuration, operating conditions and other factors. Maximum battery capacity decreases with time and use.

**Battery Charge Times:** The 4-cell and 6-cell batteries typically have greater than 80% charge after about an hour of charging, and fully charge in about 2 hours with the system off.

**Graphics & System Memory:** Significant system memory may be used to support graphics, depending on system memory size and other factors.

**Notebooks with 4GB or Greater System Memory Capability:** Up to 1GB may not be available with 32-bit operating systems due to system resource requirements.

**Hard Drives:** For writeable storage devices, GB = 1 billion bytes and TB = 1 trillion bytes; actual capacity varies with preloaded material and operating environment and will be less.

**Mobile Broadband Service:** Subject to wireless provider's broadband subscription and coverage area; additional charges apply.

**Mobile Broadband average download speeds:** For comparative purposes only. Actual speed varies and will be less.

**TPM 1.2:** Not available in all regions

**E6500 Weight:** Preliminary starting weight with 4-cell, 2.5" thin SSD, 15.4" LED, integrated graphics, and Travel Lite module is 5.17lbs/2.34kg. Weight varies with configuration and manufacturing variability.

**E6400 Weight:** Preliminary starting weight with 4-cell, 2.5" thin SSD, 14.1" LED, integrated graphics, and Travel Lite module is 4.3lbs/1.95kg. Weight varies with configuration and manufacturing variability.

**Limited Hardware Warranty:** For a copy of limited warranty, write Dell USA LP, Attn: Warranties, One Dell Way, Round Rock, TX 78682 or visit [www.dell.com/warranty](http://www.dell.com/warranty).

**CompleteCare Accidental Damage Service:** CompleteCare service excludes theft, loss, and damage due to fire, flood or other acts of nature, or intentional damage. Customer may be required to return unit to Dell. For complete details, visit [www.dell.com/servicedescriptions](http://www.dell.com/servicedescriptions).

**Genuine Windows Vista® Downgrade rights:** The Genuine Windows Vista® Downgrade rights come with Genuine Windows® XP Professional pre-installed along with media and technical support for both Genuine Windows® XP and Genuine Windows Vista® so you may transition to Genuine Windows Vista® when you're ready.

Copyright 2008 Dell Inc. All rights reserved. Intel, vPro and Core are trademarks or registered trademarks of Intel Corporation or its subsidiaries in the United States of America and other countries. Microsoft, Windows, and Windows Vista are registered trademarks of Microsoft Corporation. Other trademarks or trade names may be used in this document to refer to either the entities claiming the marks and names or their products. Dell disclaims proprietary interest in the marks and names of others. Reproduction in any manner whatsoever without express written permission from Dell Inc. is strictly forbidden.

