

LATITUDE
freedom from business as usual



**LATITUDE E5500 and E5400
PRODUCT GUIDE**



LATITUDE E5500, E5400

freedom from business as usual

At last, business class notebooks that pull their own weight and work like they're supposed to, free from excessive hassles and constant overhauls. Beautiful and rugged, the E5500 and E5400 deliver mobile computing that works as hard as you do, anytime, anywhere. It's freedom from business as usual.

IT Customer Viewpoint

I'm caught in a difficult place. It's hard to balance the desires and demands of our workforce with the concerns of managing our systems smoothly and securely. I should be able to manage our notebooks anywhere in the world without leaving my desk. My company data should be just as safe on the other side of the world as in the home office. I'm tired of notebooks that let my end-users down, forcing me to scramble and quickly find replacements.

End User Customer Viewpoint

I'm sick of big, heavy notebooks that sometimes connect to wireless networks and other times leave me stranded. And I'm tired of having my workflow interrupted because my battery lets me down. I need a notebook that looks good and doesn't slow me down with a difficult-to-use keyboard or trackpad. If I have lots of trouble using it, it's worthless to me.

Latitude™ E-Family Answer

Dell is inspired by you. You're tired of compromise, so we designed a family of notebooks where sacrifice was no longer necessary. No detail went overlooked, inside or out. We didn't stop until we created a notebook that is both rugged and beautiful. That can keep you working anywhere, anytime. No need for frantic calls to IT because Latitude's established leadership is designed to deliver superior manageability to help provide IT control. Dell's ProSupport services offer a globally consistent customer-driven support portfolio and our new Mobility Services offer the broadest solution focused on protecting your notebooks and data. So now you can get more done and your business moves forward. With Dell™ E5500 and E5400, you're finally free from business as usual.



Latitude E5400 and E5500 notebooks deliver proven technology for business-class computing. All the essential features you need in a notebook to maximize user and IT productivity empowered by leading-edge IT simplification technologies. Latitude is designed for ultimate productivity and low total cost of ownership.

Key Features:

- Redesigned for optimum performance at every level. Sleek with robust hinges and latches for improved durability. Plus a new keyboard designed for accuracy, durability and comfort .
- Extended battery life that works as hard as you do— E5500 and E5400 notebooks can get up to 7+ hours* on a single 9-cell battery
- Anytime, Anywhere wireless connectivity* supports all current wireless technology like Wi-Fi®, mobile broadband*, Bluetooth® 2.1, and, High Performance Wireless-N.
- Seamless transitions from on-the-move to desktop with new Latitude family docking solutions.
- Dell ControlPoint™ creates an awesome user experience by simplifying your Wi-Fi connections. Make adjustments to management profiles without taxing your system memory.



All Day COMPUTING



*I can stay connected and productive
virtually anywhere and everywhere.**



*See important information at end of document

All-Day Battery Life*

Dell introduce a dramatic step forward in battery life: batteries that last and last for all-day computing.

The 9-cell battery can free you to work for a full 8-hour work day.

Extend your battery service with optional Extended Battery Service during your 3-year Limited Warranty*.

Take advantage of short charge time opportunities with **ExpressCharge™** - charges the battery in about an hour.



Connectivity

Free yourself from cables with our excellent antenna design supporting Mobile Broadband* and Wireless-N in addition to emerging wireless technologies like Bluetooth 2.1.

Integrated Dell Mobile Broadband*

(cellular data) mini-cards provide wide area data connectivity via national cellular networks. With average download speeds of up to 7.2 Mbps*, you can remain productive wherever you go.* Both EV-DO Rev A and HSPA solutions available; tri-band HSPA solutions support international roaming capability.

Dual 5-band mobile broadband antennas

provide support for all major worldwide frequency bands using GSM standard. International travelers who use the GSM mobile broadband cards can roam between the U.S. and Europe and get full 3G speeds on GSM networks. Furthermore, you get investment protection for after point of sale card purchases or even next generation card upgrades – the antennas to support are already there(E5400 only).

Mobile broadband cards (E5400 only) have built-in GPS functionality that can be used with location-based applications like Garmin® and Microsoft® Streets & Trips.

Wi-Fi Catcher™

Wireless on/off switch and sniffer button allows user to easily find out if a connection is available, even when the system is off. Use the switch to turn off antennas when not in use to save battery life. Easy to check for available networks without opening or turning on the notebook.



Connectivity

Wi-Fi

Intel® Centrino® Mobile Technology

Latitude E5500/E5400 offer Intel® Centrino® Mobile technology featuring the Intel WiFi Link 5100 or 5300 Draft 802.11n Wi-Fi cards, Intel Core™ Processor and Intel 945GE chipsets. Intel Centrino Mobile Technology delivers excellent wireless performance while enabling great notebook battery life.



Dell Wireless LAN

Latitude E5500/E5400 feature a choice of Dell Wireless Wi-Fi solutions with the option of either the Dell Wireless 1397 802.11g or the Dell Wireless 1510 Draft 802.11n Wi-Fi cards.

Personal Area Networks enable connection to devices and peripherals such as keyboards, mice, printers, scanners and wireless docking stations within a PAN.



Dell Wireless 370 Bluetooth Wireless

The Dell 370 card features the latest Bluetooth version 2.1 + EDR (Windows® XP OS) technology with a throughput of 3Mbps*. The Dell 370 offers firmware upgradeability to the forthcoming Bluetooth 2.1 update for Windows Vista® OS.

Compared to the previous Dell 360/Bluetooth 2.0 combination, the new Dell Bluetooth 2.1 offerings can provide longer battery life and easier pairing for Bluetooth 2.1-capable devices.

Allows cable-free computing with Bluetooth enabled devices such as keyboards, mice, PDAs, headsets & mobile phones.



Dell's Wi-Fi and Bluetooth solutions are designed to work together with minimal interference. The optional Dell Wireless 370 Bluetooth module incorporates its own dedicated antenna and radio to help achieve optimal performance.



The Tools You Need

New Dell ControlPoint software puts you in complete control. It provides a single access point with intuitive navigation to easily configure your notebook the way you need it.

With a single hot key combination, you have access to the settings you need: power management, displays and devices, connections, security and system information. Consistent visual user interface throughout all these applications means easy, natural interaction for end users.

User Selectable Modules with Tight Administrative Controls

IT managers have the option to install all of the modules or pick and choose specific modules for their custom system images. IT managers can also control user configurable options, create company specific branding, and enable company help files and automated links to additional web content.



Dell ControlPoint

Power Settings

The ControlPoint Power Settings module provides a wide-ranging set of power management configuration, alerting capabilities and sleep modes.

Battery Status

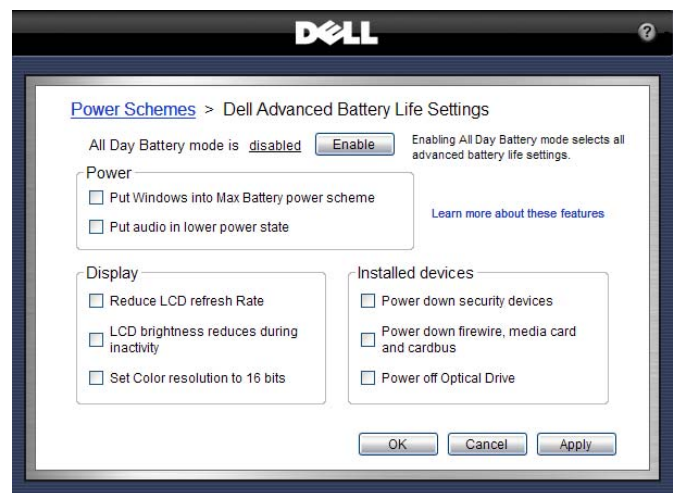
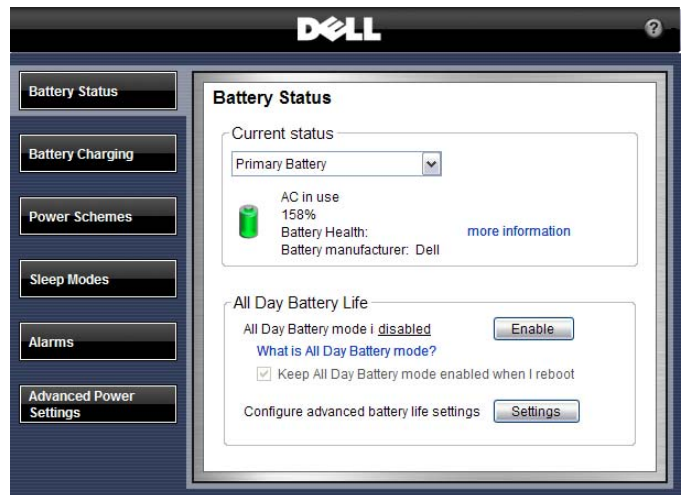
Quickly view battery status, available charge and health. Users can also easily configure advanced power settings to maximize battery life.

Power Scheme and Sleep Mode

Choose the preset Extended Battery Mode to maximize your battery life

Custom-configure power schemes to work the way you want to work

Sleep modes can be quickly configured along with standby and hibernate settings

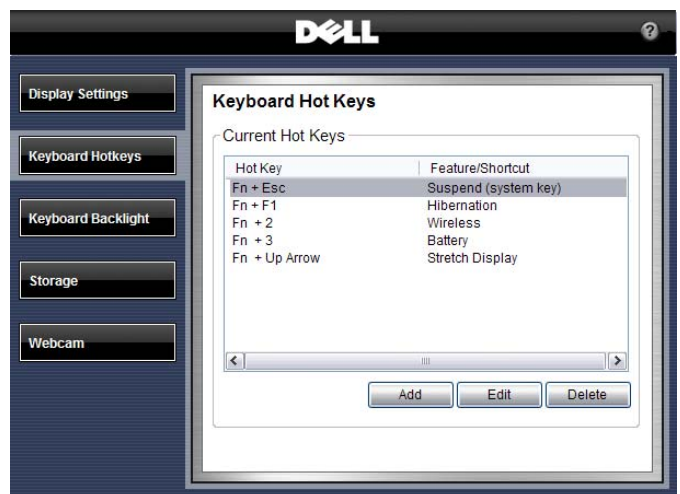
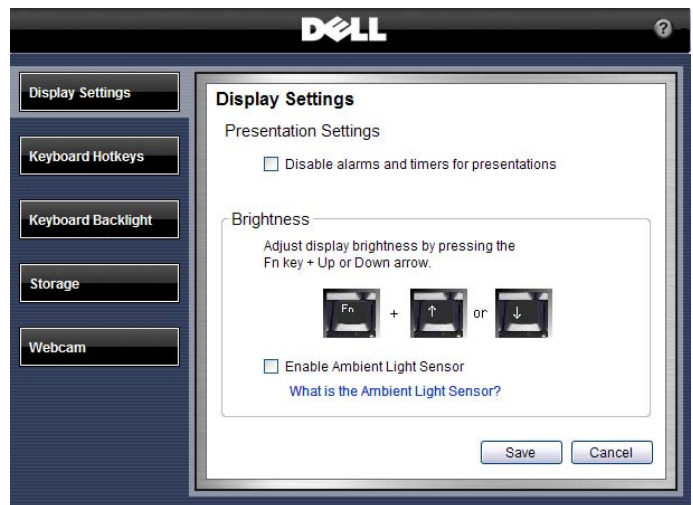


Display and Devices

The Dell ControlPoint Display & Devices module provides a variety of configurable settings for your display as well as other devices attached or installed with your system. Some key configurable features include the presentation mode with projectors, ambient light sensor and keyboard backlighting capabilities.

Keyboard Hotkeys

Customers can easily set up a series of custom hot keys to meet their individual work environment requirements



Dell ControlPoint Connections Manager

For fast and easy connections to any device or network, the Connections Manager module provides a comprehensive communications management environment: Ethernet, Dial-Up, Wi-Fi, Mobile Broadband* and GPS.

Users can also enable & disable any of the radios on their notebook – Wi-Fi, Bluetooth, GPS and Mobile Broadband*.

Location Profiles and Administrative Controls

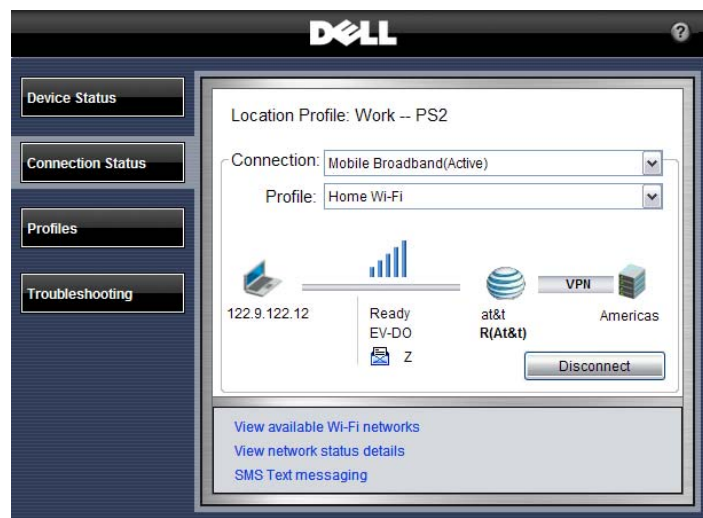
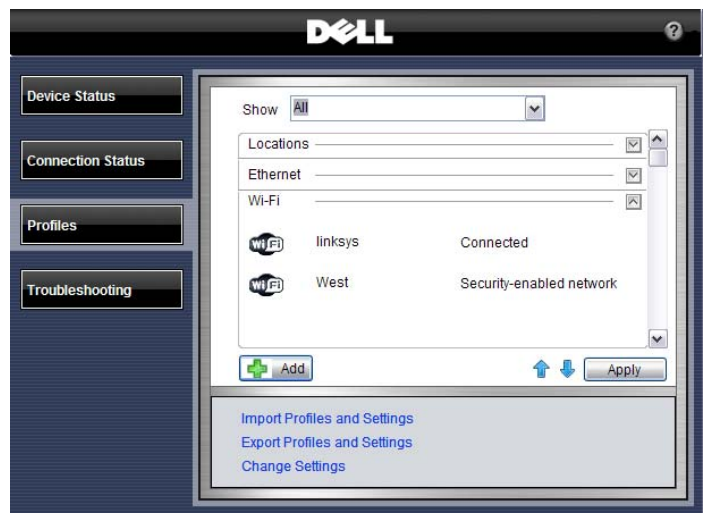
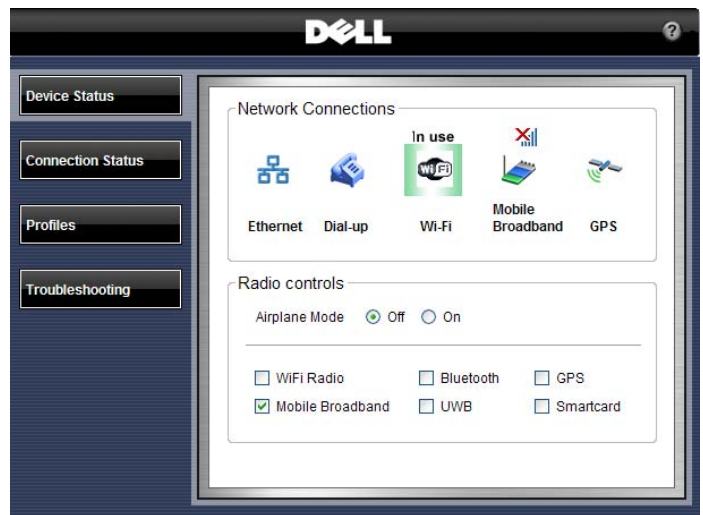
Create multiple mobile Profile Settings such as printer, browser, VPN and network, as well as mobility settings for adapter and profile switching.

Define, export, and import usage profiles. Customize printer setup, application launch, drive mapping, and more.

Administrative controls with the ability to limit user configurable options.

Enhanced Diagnostics and Administrative Tools

- Simple and advanced configuration and status dashboard
- Enhanced multi-network connection diagnostics and event logging
- Hardware diagnostics for all devices
- Error and Connection Status log
- Profile import/export and locking



Dell ControlPoint Security Center

As more critical data becomes mobile the need for enhanced security is vital. The Dell ControlPoint Security Center module provides access to use authentication, encryption, fingerprint readers and smartcard technologies.

Security Status

Quickly view system security status

Manage Logins and Passwords

Require fingerprint for login

Set a pre-boot password

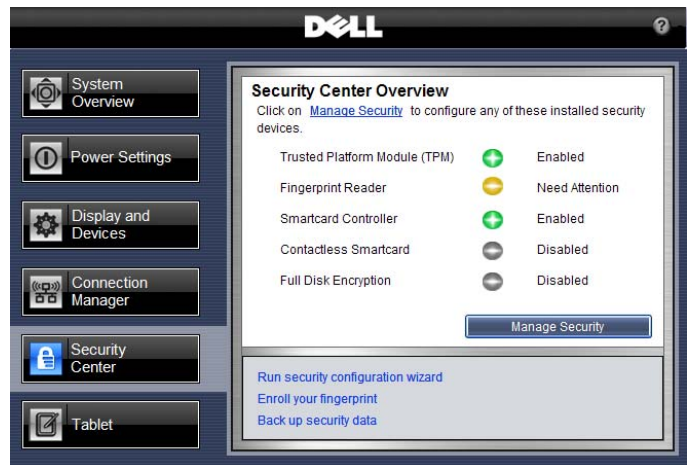
Manage Windows® password settings

Manage Data Protection

Set hard drive password

Manage document vault

Manage encryption



INSPIRED DESIGN.



My notebook should work as hard as I do.



Sleek, Durable Design

Latitude E5500 and E5400 has been designed to deliver proven technologies for everyday computing. It provides exceptional value without compromising essential features.

Exceptional durability with redesigned robust hinges & latches.

Strike Zone™ helps improve hard drive protection in the event of a fall by dissipating shock.

Our 7200rpm hard drives now come standard with Free Fall Sensors.

Keyboard durability focus means E-Family is designed for improved keycap retention and screen printing.



Outstanding Usability

Excellent usability with redesigned keyboards that deliver accuracy, comfort, and outstanding feel.

Latitude notebooks are designed for the ultimate user experience with one click access to all user settings with new Dell ControlPoint software.



Expanding Mobile Experience

Redesigned sleeker, smaller docks and peripherals deliver a seamless experience between your desktop and mobility – including the new E-Port and notebook stand – designed for the smallest footprint.

E-Port Plus offers Dual Digital Monitor capabilities along with legacy ports - The non-compromise station designed for enhanced usability at desk supports hot & warm docking.

E-Port is a space-saving port replicator for graphics as well as latest ports. Suitable for home and office environment enables you to conveniently connect to your desk peripherals.

E-Legacy Extender can be attached to the bottom of the notebooks adding parallel, serial, PS/2 and 2 USB connectors when needed.



E-Port Plus side and back views



E-Port side and back views



E-Legacy Extender back view



E-Flat Panel Stand

The Integrated Flat Panel Stand is an ergonomic stand associated for the new Latitude E-Port and E-Port Plus. It accepts Dell Flat Panels via the Dell Quick Connect connector (default) as well as standard VESA mount (requires screws).



E-Flat Panel Stand with dual flat panel monitor desktop configuration



E-Flat Panel Stand front and side views with E-Port Plus



E-Monitor Stand

The Basic Monitor Stand is an accessory of the E-Port and E-Port Plus that enables use of any LCD flat panel monitors and CRT monitors.



E-View Laptop Stand

This stand provides an innovative way to use the notebook LCD versus an external monitor at the end users desk. E-Family notebook stand is adjustable and enables the user to elevate the LCD panel to an ergonomic position. It also requires significantly less desk space than a dock and external monitor.



PEACE OF MIND IS PART OF THE PACKAGE.



My data should be mine and mine alone.



ProSupport Mobility Services*

The broadest solution for protecting your notebooks and data. Committed to enabling your mobile workforce, minimizing downtime and protecting your investment.

Mobile Asset Protection Services* enable your mobile workforce while protecting your investment with Extended Battery Service, CompleteCare Accidental Damage Service* and Laptop Tracking and Recovery.

Mobile Data Protection Services*

featuring Remote Data Delete, Hard Drive Data Recovery and Certified Data Destruction services. Helps you feel more secure knowing Dell can track it and remotely delete your sensitive data to help prevent potential loss of valuable data or recover data when you have a failed hard drive and did not back up your system.

Solve asset issues while keeping end users productive on the road.

CompleteCare Accidental Damage Service coverage for notebooks that have encountered liquid spills, electrical surges, drops, falls, and extreme temperatures

Theft and Recovery Protection assists in finding a lost or stolen laptop, via tracking software loaded on the system.

Remote Data Deletion allows remote initiation of a disk drive data wipe in the event the system is lost or stolen.

Extended battery service aligns battery coverage with your laptop usage, and provides one additional replacement battery during years 2 or 3 of coverage.



Deployment Services - Helps customers more effectively execute Windows Vista migrations and E-Family deployments

ImageDirect Service is cross-platform to help ensure a streamlined transition to the new Latitude E from legacy Dell products. With ImageDirect, your image is only a few mouse clicks from being ready to deploy as opposed to the few weeks inherent with traditional image make-ready.

Dell Client Migration and Deployment Services deliver the upfront planning and automated implementation that can reduce cost, helps minimize disruption to ongoing productivity by reducing 88%¹ of the desk-side technician time and by eliminating an estimated 70%¹ of the network traffic associated with deployment.

Dell Automated Deployment (DAD) patent pending tools and processes that minimize technician intervention thereby allowing the technician to spend just minutes at a PC instead of hours.

- **Dell Data Direct™ (DDD)** captures and migrates complete end-user accounts, including OS and application settings, printers, data files, and more.

Dell desktop management services enable IT organizations to manage mobile, distributed workforces via the web anytime from virtually anywhere in the world. This powerful, scalable and cost effective Software-as-a-Service (SaaS) platform model is activated with a simple Internet connection. Our comprehensive set of software services are delivered via a single, integrated Web-based management console.

- Asset Management – automated tracking of software, hardware, and software licenses for all desktops and laptops, regardless of location.
- Patch Management – Helps protect corporate and remote users through a fully automated or targeted patch management approach.
- Anti-Malware & Virus Management – Provides management of advanced antivirus, antispymware, anti-malware and firewall solutions from world class vendors including Symantec™, McAfee® and Microsoft®.
- Data Encryption – Encrypts and protects data on an online or offline PC to help prevent its compromise or misuse allowing organizational control of that data even when the user has lost control of the device.
- Online Backup – Designed to deliver safe, secure, and automated backup over the Internet powered by Iron Mountain® software and storage at fully redundant offsite facilities.
- Software Distribution – Drives adherence of corporate standards by automating the distribution of new applications and upgrades as well as helping to maintain uniform configurations throughout the organization including support for Faronics' Deep Freeze.



¹Based on an internal assessment of select Dell customers compiled from October 2006 to October 2007.

Simply Secure

Information technology has become a backbone for our customers. It is a daily tool for real time collaboration as well as crucial business data storage. At the same time, our world has become extremely mobile: valuable files are sent over the networks or carried around the planet on notebooks. As a result, there is a growing threat for data loss or leakage.

Whether you need enhanced physical protection or easy to manage protection for your critical data, Dell's security offering can help. We are committed to simplifying security deployment, usage and maintenance, in order to allow smaller businesses to acquire relevant security and larger organizations to implement at low total cost of ownership impact.

Deploy Faster

The complexity of IT can slow down even the most tightly run organization. By speeding up deployment and configuration, you can reclaim wasted time and redirect it toward growing your business.

Dell can deliver a fully secured system directly from the factory that covers all four key aspects of security: System Protection, Access Control, Data protection and Malicious Threats prevention.

With Dell's Custom Factory Integration (CFI), we can deliver pre-configured systems including non-Dell standard hardware and proprietary software right out of the factory.

CFI offers security features such as custom asset tags, and StopTrack or TLS labels.



Prevent Smarter

You want to prevent security breaches into your business. But security is complex and there are many aspects to it. Choices are difficult to make, stable technologies cannot be identified, and you could suffer from skyrocketing costs and complexity.

Based on long-lasting technologies, Dell end-point security solutions enable you to protect business assets by including relevant and long term technologies in our notebooks.

The Latitude E5500 and E5400 are designed with these multi-factor authentication technologies:

- Integrated fingerprint reader option
- Smartcard reader option through PCMCIA slot

Furthermore, we make security easy for the user as well by providing easy to use software that supports multiple technologies through a single console in Dell ControlPoint Security Manager (see page 12 of this guide for more.)



PUTS IN THE HOURS.
WORKS WELL WITH OTHERS.
ALWAYS COMES IN UNDER BUDGET.



Notebook deployment to the field and management should not be rocket science.



Latitude works like it's supposed to, with freedom from hassles and constant overhauls. It's the ultimate team player, letting you manage notebooks virtually anywhere in the world without leaving your desk. Finally, an IT investment that doesn't cost a fortune coupled with business-class service that is truly first class. Freedom from hassles with technology that gives you Total Control of Ownership.

Unplanned change costs your business time, money and people. Dell minimizes change to help you reclaim and refocus your resources.

Long product lifecycles and proactively managed product transitions help minimize costs and headaches. Long lifecycle and long overlap means customers have time to evaluate the new product, create a new image and plan the transition as fits their business needs.

Consistent configurations worldwide simplify global deployment and management.

Image stability is key. Carefully managed change means fewer image impacts. When change is unavoidable, Dell gives you the tools for early notification months before they happen.

Dell ImageWatch™ is a flexible and easy to use tool that enables proactive transition management for Dell customers.

Compatible peripherals, adapters, and docking

Share accessories among users and among systems within the family.



Core Technologies



New Performance Architecture

Intel® Core™ 2 Duo Processor

Dell Latitude E5500 and E5400 are equipped with Intel® Core™ 2 Duo mobile technology, featuring the Intel GE45 Express chipset. You get powerful mobile dual-core processors with 3MB or 6MB Level 2 cache and up to 4GB* of 800MHz dual-channel DDR2 system memory*.

Intel® Centrino® 2 processor technology provides a forward leap in wireless connectivity, battery life and performance. What's more, thanks to halogen-free and lead-free manufacturing and a breakthrough 45nm design, users enjoy true energy efficiency. Intel® Centrino® 2 processor technology helps meet Energy Star™ requirements without sacrificing performance.

Chipset and Memory

Intel® GE45 Express Chipset features:

- Support for up to 4GB* system memory and for dual memory channels and DDR2 800MHz memory*
- 1066MHz front side bus
- Serial ATA hard drive support
- Up to 6 PCI express ports
- Small footprint (size)

Dual Channel DDR2 Memory*

DDR2 offers dual-channel capability for additional bandwidth and performance, reduced power consumption and scalability to help increase performance with processor and chipset bus architecture.

PCI-Express (PCI-E) Technology

Serial I/O and Graphics Interconnect provide high performance (up to 8GB/sec bandwidth) backwards compatibility with PCI implementation. PCI-Express is expected to keep pace with processor and I/O advances for the next 10 years or more, so it is designed to address your technology for the foreseeable future.



Graphics

The Latitude E5500 and E5400 utilize the latest Intel integrated graphics.*

Mobile Intel® Graphics Media Accelerator 4500MHD brings the next generation benefits of dialed up performance, power management and support for new technologies.

Intel GMA 4500MHD helps deliver a next generation video and 3D experience:

- Clear and accurate video playback with crisp details.
- Support for advanced features like Picture-in-Picture,
- Use new video display connectors HDMI and DisplayPort
- Full hardware decode enables smooth playback of next generation HD AVC, VCI, MPEG2 content.
- View weave and jitter-free playback of static and fast-moving objects with SD and HD de-interlacing which applies multiple fields to construct progressive frames.
- Experience rich 3D graphics applications with Microsoft® DirectX® 10 and DXVA 2.0 – new industry graphics feature and acceleration technologies
 - Accurately scale images to fit different display resolutions with Panel Fitter 2
- Efficient and intelligent balancing of shared system memory usage between graphics and other applications with DVMT 5.0

Users can experience the latest power conservation features of Intel GMA 4500MHD. Intel® Graphics Power Modulation Technology helps extend battery life through dynamic switching of render core voltage and frequency. Graphics Render Standby puts render engine into standby during periods of inactivity and dynamically lowers render core voltage.



The Green Side of Latitude

Dell's environmental stewardship program drives to conserve product energy consumption, reduce or eliminate materials for disposal, prolong product life span and provide effective and convenient equipment recovery solutions. By streamlining business steps and processes, Dell minimizes stress on the environment while achieving speed, responsiveness and cost savings that can be passed along to customers.

Product Concept and Design – with Environment in Mind

Dell's focus on improving environmental performance starts with our Design for the Environment (DfE) approach. When designing new systems, engineers consider environmental factors such as material composition of components, amount of materials used, energy efficiency as well as design attributes that aid in recycling.

The Latitude brand has a history of leadership in delivering green notebooks:

- 1st Notebook to achieve EPEAT Gold (Latitude D630)
- 1st Notebook to implement Energy Star 4.0 Standard (Latitude portfolio May 2007)

Minimize Energy Consumption

- 1st Energy Star 4.0 Compliant Notebooks
- Industry Leading Energy Smart Power Management Settings on all Latitude Notebooks
- Energy Efficient Technologies (CPU, LED Backlight etc.)
- 87% Averaged Efficiency for E-Family External Adapters

Minimize Toxins

- WW RoHS (Lead-Free) Compliant since July 2006
- China RoHS Compliant
- Mercury Free LCD Panels (Latitude XT, E6400, E6500, E4300, E4200)
- Dell Latitude E4200 will be a Halogen-Reduced Dell notebook that offers a motherboard containing “halogen-free” laminates (per JPCA ES-01-1999), as well as “halogen-free” chassis plastics and fan housing/impeller.

Minimize Waste

- Recycled Packaging with 25% Post Consumer Cardboard
- Asset Recovery and Recycling Services



Product Gallery



Latitude E5400 Technical Specifications

Processors

Intel® Core™ 2 Duo Processor
Up to T9400 (2.53GHz, 6MB L2 Cache)

Operating System

Genuine Windows Vista® Business
Genuine Windows Vista® Home Basic
Genuine Windows® XP Professional

Chipset

Intel® 45 Express Chipset

Displays

14.1" UltraSharp™ Widescreen WXGA+ (1440x900)
LED Display
14.1" Widescreen WXGA (1280x800) Display

Memory

Dual Channel DDR2 Memory*
Two Memory slots offering up to 8GB*
Memory Bandwidth: 800MHz

Primary Storage

7200RPM Free Fall Sensor Hard Drive up to 160GB*
5400RPM Encrypted Hard Drive up to 120GB*
5400RPM up to 250GB*

Optical Drives

DVD-ROM, CD-RW/DVD, DVD+/-RW*

Graphics Cards

Mobile Intel® Graphics Media Accelerator
X4500MHD*

Power

90 Watt AC adapter with cord wrapping
4-cell, 6-cell or 9-cell extended life primary batteries

Chassis

Preliminary weight starting at: 5.58 lbs/2.54 kg*
Dimensions
Width: 13.31"/338mm
Depth: 9.68"/244mm
Height: 1.46"/37mm

Connectivity

Wired:

10/100/1000 Gigabit Ethernet
56K v924 Internal Modem (Optional)

Wireless:

Dell Wireless 1397 (802.11b/g); Dell Wireless 1510
(802.11a/g/n); Intel WiFi® Link 5100 (802.11a/g/n 1x2); Intel
WiFi Link 5300 (802.11a/g/n 3x3) Mini-Cards

Dell Wireless 370 Bluetooth® 2.1 Module or Dell Wireless
Dell Wireless 5530 Mobile Broadband* (Tri-band HSDPA
7.2/HSUPA 2.0) Mini-Card with GPS and service from AT&T
(US) and Vodafone (select countries in Europe)
Dell Wireless 5720 Mobile Broadband* (EVDO Rev A) Mini-
Card with GPS and service from Verizon Wireless (US),
Sprint (US)

Security

Physical Security:

Steel-reinforced Cable Lock Slots, Media Module and Hard
Drive Locks.

User & System Security:

PCMCIA Smart Card Reader (Post-RTS option)
Fingerprint Reader (optional)
TPM 1.2
Optional Encrypted Hard Drive provides full disk encryption

Network Security:

802.11 Wi-Fi Protected Access (WPA), 802.11i (WPA2),
Virtual Private Networks (VPN) 802.1x with EAP modes and
compatible with CCX 4.0

Multimedia

2 speakers, digital microphone

Expandability

Slots:

SD/MMC card reader; PCMCIA

Docking:

E-Port, E-Port Plus, E-Legacy Extender, E-Flat Panel Stand, E-
Monitor Stand, E-View Laptop Stand, E-Media Bay

Modular Options:

Travel Lite Module

Ports

1394, USB 2.0 (x4), VGA, RJ-11 (optional), S-video, RJ-45,
Audio



E5400 Weight, Dimensions, and Top View

**Preliminary Starting
5.58lb/2.54Kg***

**Dimensions:
Width: 13.31"/338mm
Depth: 9.68"/244mm
Height: 1.46"/37mm**



**Robust
redesigned
metal latch**

**Ambient light sensor can
be customized in Dell
ControlPoint to adjust
display and backlit
keyboard brightness**

**Precision-tuned
keyboard**

Wi-Fi Catcher

**Quick touch volume
up, down and mute
buttons**

SD/MMC Card Reader

Robust hinge construction

**Hot Key to launch
Dell ControlPoint
console <Fn+F7>**



**Optional fingerprint reader is
located at the bottom of the
right speaker grill**



E5400 Right View



Optical Drive

Headphone jack

Lock Slot

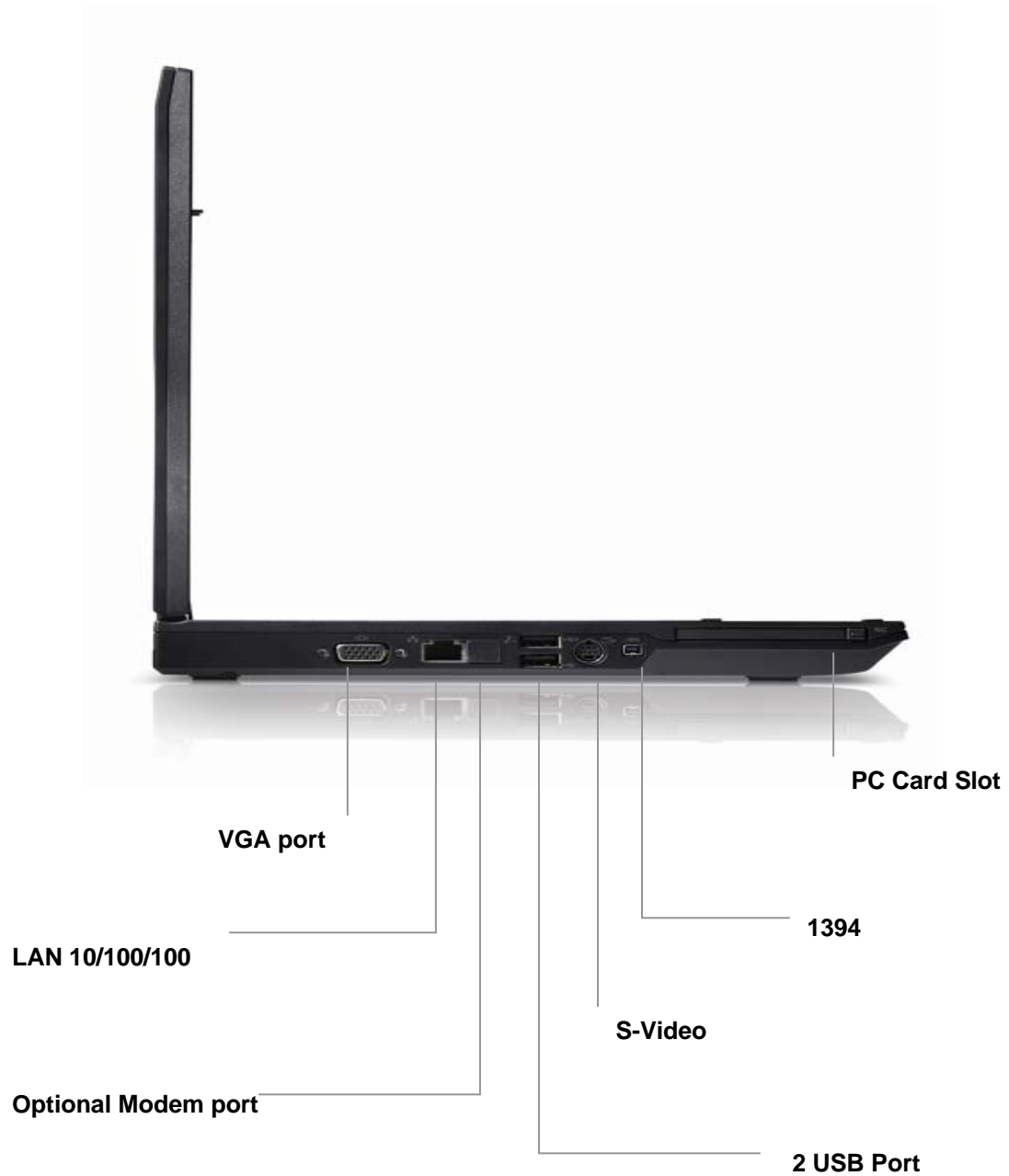
Microphone Jack

AC adapter plug

2 USB ports



E5400 Left View



Latitude E5500 Technical Specifications

Processors

Intel® Core™ 2 Duo Processor
Up to T9400 (2.53GHz, 6MB L2 Cache)

Operating System

Genuine Windows Vista® Business
Genuine Windows Vista® Home Basic
Genuine Windows® XP Professional

Chipset

Intel® 45 Express Chipset

Displays

15.4" UltraSharp™ Widescreen WXGA+ (1440x900)
LED Display with TrueLife™
15.4" UltraSharp™ Widescreen WXGA+ (1140x900)
LED Display with anti-glare
15.4" Widescreen WXGA (1280x800) Display

Memory

Dual Channel DDR2 Memory*
Two Memory slots offering up to 4GB*
Memory Bandwidth: 800MHz

Primary Storage

7200RPM Free Fall Sensor Hard Drive up to 160GB*
5400RPM Encrypted Hard Drive up to 120GB*
5400RPM up to 250GB*

Optical Drives

DVD-ROM, CD-RW/DVD, DVD+/-RW*

Graphics Cards

Mobile Intel® Graphics Media Accelerator
X4500MHD*

Power

90 Watt AC adapter with cord wrapping
6-cell or 9-cell extended life batteries

Chassis

Preliminary weight starting at: 6.06lbs/2.75kg*
Dimensions:
Width: 13.99"/355mm
Depth: 10.24"/260mm
Height: 1.48"/37.5mm

Connectivity

Wired:

10/100/1000 Gigabit Ethernet
56K v924 Internal Modem (Optional)

Wireless:

Dell Wireless 1397 (802.11b/g); Dell Wireless 1510
(802.11a/g/n 2x2); Intel WiFi® Link 5100 (802.11a/g/n 1x2);
Intel WiFi Link 5300 (802.11a/g/n 3x3) Mini-Cards
Dell Wireless 370 Bluetooth® 2.1 Module or Dell Wireless

Security

Physical Security:

Steel-reinforced Cable Lock Slots, Media Module and Hard
Drive Locks.

User & System Security:

PCMCIA Smart Card Reader (Post RTS option)
Fingerprint Reader (optional)
TPM 1.2
Optional Encrypted Hard Drive provides full disk encryption

Network Security:

802.11 Wi-Fi Protected Access (WPA), 802.11i (WPA2),
Virtual Private Networks (VPN) 802.1x with EAP modes and
compatible with CCX 4.0

Multimedia

2 speakers, digital microphone

Expandability

Slots:

SD/MMC card reader; PCMCIA

Docking:

E-Port, E-Port Plus, E-Legacy Extender, E-Flat Panel Stand, E-
Monitor Stand, E-View Laptop Stand, E-Media Bay

Modular Options:

Travel Lite Module

Ports

1394, USB 2.0 (x4), VGA, S-video, RJ-11 (optional), RJ-45,
Audio, serial



E5500 Weight, Dimensions, and Top View

Preliminary Starting Weight:
6.36lb/2.89Kg*

Dimensions:
Width: 13.99"/355mm
Depth: 10.24"/260mm
Height: 1.48"/37.5mm



Robust redesigned metal latch

Precision-tuned keyboard

Wi-Fi Catcher

Quick touch volume up, down and mute buttons

SD/MMC Card Reader

Robust hinge construction

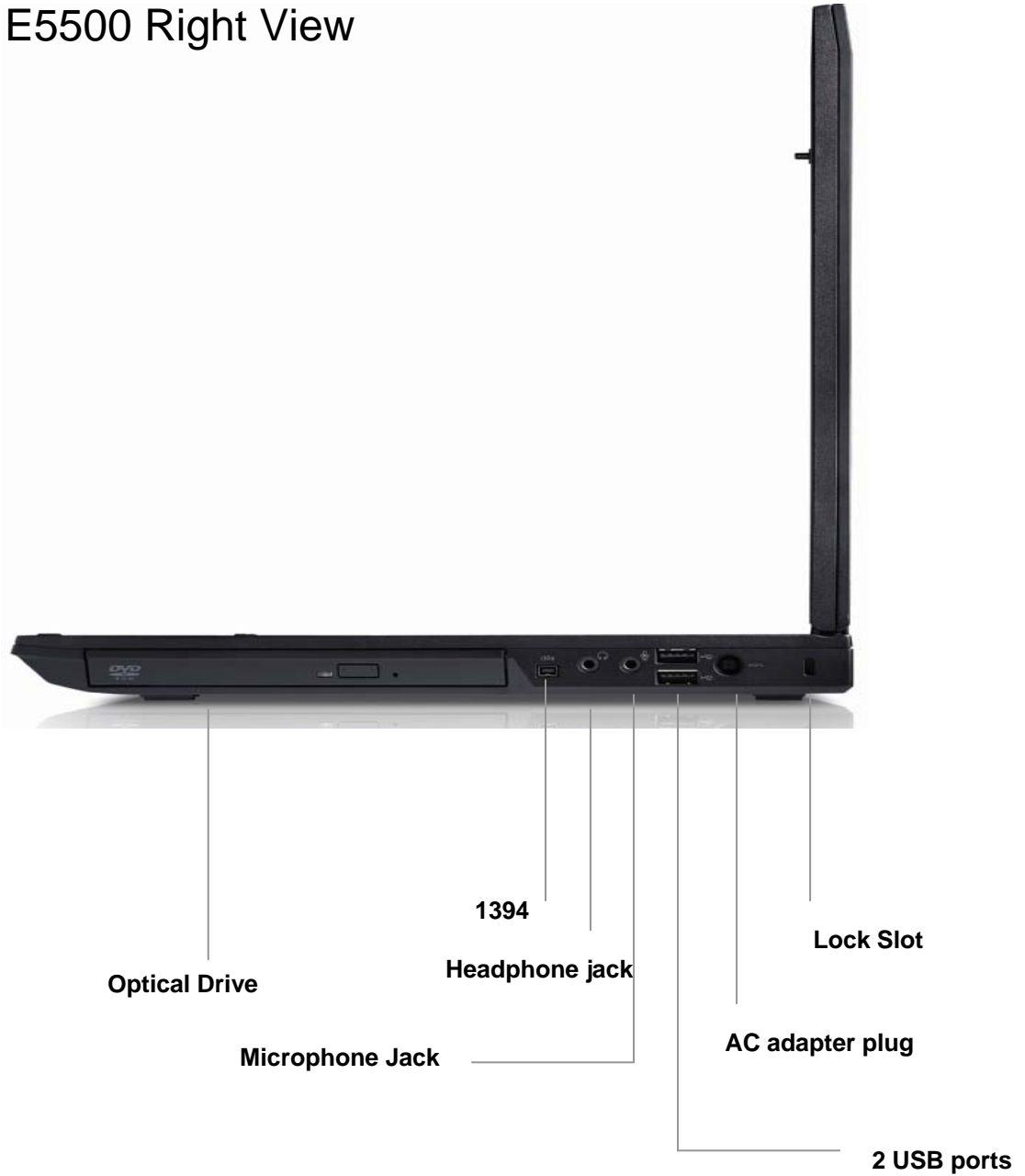
Hot Key to launch Dell ControlPoint console <Fn+F7>



Optional fingerprint reader is located at the bottom of the right speaker grill



E5500 Right View



E5500 Left View



Important Information

All-Day Computing/Battery Life: Preliminary results based on Dell lab testing. Varies by configuration, operating conditions and other factors. Maximum battery capacity decreases with time and use.

Anytime, Anywhere Connectivity: Applies to E5400 only. Subject to wireless provider's coverage area. Mobile broadband subscription required, additional charges apply.

Wireless Connectivity: Where wireless access is available. Additional access charges apply in some locations. Accessibility to company networks may be affected by firewalls or other privacy measures.

Graphics & System Memory: Significant system memory may be used to support graphics, depending on system memory size and other factors.

Hard Drives: For writeable storage devices, GB = 1 billion bytes and TB = 1 trillion bytes; actual capacity varies with preloaded material and operating environment and will be less.

DVD+/-RW Optical Drive: Discs burned with this drive may not be compatible with some existing drives and players; using DVD+R media provides maximum compatibility.

Mobile Broadband average download speeds: For comparative purposes only. Actual speed varies and will be less.

Limited Warranty: For a copy of limited warranty, write Dell USA LP, Attn: Warranties, One Dell Way, Round Rock, TX 78682 or visit www.dell.com/warranty."

CompleteCare Accidental Damage Service: CompleteCare service excludes theft, loss, and damage due to fire, flood or other acts of nature, or intentional damage. Customer may be required to return unit to Dell. For complete details, visit www.dell.com/servicecontracts.

Dell ProSupport Services: For terms of service please visit: www.dell.com/servicecontracts.

Copyright 2008 Dell Inc. Intel, and Core are trademarks or registered trademarks of Intel Corporation or its subsidiaries in the United States of America and other countries. Microsoft, Windows, and Windows Vista are registered trademarks of Microsoft Corporation.

