

# DELL™ INSPIRON™ 9400



## *Entertainment Powerhouse*

### Contact Information:

Name	xxxxxx
Phone	xxxxxxxxxxxxxx
Fax	TBD
E-mail	xxxxxxxxxxx@Dell.com
Pager	xxxxxxxxxx

REVIEWERS GUIDE



# Dell™ Inspiron™ 9400

*Entertainment Powerhouse*

# CHANGE LOG & CONTENTS

## Changes to the Reviewer's Guide

Dec 1, 2005: Created

Dec 21, 2005: Final Legal edits included

Dec 22, 2005: Legally approved – ad no. 59967110

Table of Contents	Page
Your Configuration	3
Key Benefits	4
Hardware Details	5
Entertainment & Security Software Details	10
Services and Support	15
Chassis Features	24
Technical Specifications	27
Important Information	32
Return information	33

# Dell™ Inspiron™ 9400

## Entertainment Powerhouse

Configuration options marked with a ✓ indicate those sent for this review.

### Processor

- Intel® Core™ Duo Processor T2600 (2.16GHz/667MHz FSB/2MB Cache)
- Intel® Core™ Duo Processor T2500 (2GHz/667MHz FSB/2MB Cache)
- Intel® Core™ Duo Processor T2400 (1.83GHz/667MHz FSB/2MB Cache)
- Intel® Core™ Duo Processor T2300 (1.66GHz/667MHz FSB/2MB Cache)
- Intel® Core™ Solo Processor T1300 (1.66GHz/667MHz FSB/2MB Cache)

### Wide Screen Display (Active Matrix TFT)

- 17" WXGA+ (1440x900) display
- 17" UltraSharp™ WUXGA (1920x1200) display with TrueLife™

### Memory

- 512MB shared\* Dual-channel\* 533MHz DDR2 SDRAM
- 1GB shared\* Dual-channel\* 533MHz DDR2 SDRAM
- 2GB shared\* Dual-channel\* 533MHz DDR2 SDRAM
- 512MB shared\* Dual-channel\* 667MHz DDR2 SDRAM
- 1GB shared\* Dual-channel\* 667MHz DDR2 SDRAM
- 2GB shared\* Dual-channel\* 667MHz DDR2 SDRAM

### Hard drive

- 60GB\* 5400 RPM SATA HDD
- 80GB\* 5400 RPM SATA HDD
- 100GB\* 5400 RPM SATA HDD
- 60GB\* 7200 RPM SATA HDD
- 80GB\* 7200 RPM SATA HDD
- 100GB\* 7200 RPM SATA HDD

### Video

- Intel® Graphics Media Accelerator 950 (with up to 256MB of shared memory)
- 256MB ATI Mobility™ Radeon™ X1400 HyperMemory\*
- 256MB NVIDIA® GeForce™ Go 7800

### Media

- DVD/CD-RW Combo
- DVD+/-RW with Dual Layer\* DVD+R write capacity\*

### Battery

- 6-cell 53Whr Li-Ion Battery
- 9-cell 80Whr Li-Ion Battery

### Communications

- Integrated 100/100 LAN and 56K Modem\*
- Intel Pro/Wireless 3945 802.11 a/b/g Mini Card Wireless

### Multimedia & Entertainment

- Dell MediaDirect
- 5-in-1 Removable Memory Card Reader
- DVI-D, VGA video output & S-Video with SPIF & component video via S-Video dongle
- IEEE 1394 (Firewire) & 6 USB 2.0
- Integrated Subwoofer

### Operating System

- Microsoft® Windows® XP Home
- Microsoft® Windows® XP Media Center Edition 2005
- Microsoft® Windows® XP Professional

### Productivity Suite

- Microsoft Works Suite 2006
- Microsoft Office 2003



YOUR CONFIGURATION

# Dell™ Inspiron™ 9400

## Entertainment Powerhouse

The Inspiron 9400 is an entertainment powerhouse defined by its dual-core processing power, large 17-inch wide-aspect display and broad video performance options. This feature-rich desktop replacement is ideal for the power consumer that likes to take the show on the road as well as the creative professional that needs multimedia capabilities that only this large-screen beauty can deliver. All of this comes packed in a svelte design and competitive value for which Dell is known.

- **PERFORMANCE FOR DEMANDING APPLICATIONS**

With dual core processors, high-end graphics and fast mobile memory and storage solutions, you have ample horsepower to run power applications ranging from 3D games to media editors as well as the latest entertainment and productivity programs.

- **Dual-core processors**

Two processor cores for simultaneous processor multitasking today and fast single application performance in the future as more applications become multi-threaded

- **Broad graphics configurability**

Latest discrete & UMA graphics options ranging from solid mainstream graphics to lightning fast delivery of 3D graphics performance

- **667MHz FSB and 667MHz dual-channel DDR2 memory**

Wider Front Side Bus bandwidth (vs. 533MHz in previous Notebooks) for fast transfer speed; fast memory can increase overall performance with low power consumption

- **7200RPM SATA HDDs**

Blazing fast access speed and latest SATA technology

- **EXTRAORDINARY VIEWING EXPERIENCE**

Don't give up a thing in your mobile entertainment with a True to Life images dancing across the biggest notebook display available from Dell.

- **Large 17" Display**

22% bigger active viewing area (actual physical display size) than 15.4" wide-screen display\*

- **Wide 16:10 Aspect Ratio**

Ideal for movie watching or viewing multiple windows; 16:10 wide aspect gives 64% more viewable content (over 4:3 standard-aspect view\*)

- **TrueLife™ Technology**

Rich, vibrant color with crisp, clear text; up to a 10% higher contrast ratio over the same display with an anti-glare coating

- **RICH ENTERTAINMENT EXPERIENCE**

Accessing your entertainment files on your mobile entertainment system has never been easier with robust features to get to your media where want it.

- **Enhanced MediaDirect**

Quick, easy, one-touch access to digital photos, music and video without booting into MS Windows

- **5-in-1 Card Reader**

Flexible and easy access to digital content without cords and proprietary applications

- **ExpressCard™ modular expansion**

Deliver high-performance, modular expansion to computers at a smaller form factor than PCMCIA standard with the new ExpressCard™ data exchange interface. For more information visit [www.expresscard.org](http://www.expresscard.org).

KEY BENEFITS

# DUAL-CORE PROCESSORS

## Dell™ Inspiron™ 9400

Entertainment Powerhouse



### Intel® Core™ Duo Processors

Accomplish more while running multiple applications, such as editing video while downloading music.

Intel® Core™ Solo processor (Single Core Technology)



Web Browser

Performance Level -  +



Virus Scan



A single core processor performs one task at a time. For example, when surfing the web and a virus scan application begins your system may perform slower because the two programs are now fighting for processor time.

Intel® Core™ Duo processor (Dual Core Technology)



Video Editing

Performance Level -  +



Virus Scan



A dual core processor can run two programs simultaneously allowing maximum performance while running demanding applications, such as editing video while downloading music and/or running a virus scan.

# Dell™ Inspiron™ 9400

Entertainment Powerhouse

## 256MB NVIDIA GeForce Go 7800

*High-end Graphics performance for a Great Entertainment Experience*

- **Extreme performance for today's breathtaking games**
  - DirectX® 9 Shader Model 3.0 allows intense visual effects
  - Introduces transparency anti-aliasing - a revolutionary visual quality enhancement
- **High definition home-theater experience**
  - NVIDIA® PureVideo™ technology allows high-quality DVD playback and stutter-free, high-definition (HD) viewing
  - Adaptive de-interlacing techniques deliver a crisp image without the double images typical of traditional techniques.
- **Advanced power management**
  - PowerMizer technology helps minimize heat and maximize battery life

HIGH-END GRAPHICS





## TrueLife™ Displays

- **Dell now offers 17" UltraSharp™ WUXGA displays with TrueLife for an extraordinary viewing experience.**
  - Dell combines the highest resolution (1920x1200) 17-inch WUXGA display with TrueLife™, offering a viewing experience that is more crisp and more vivid than lower resolution displays with anti-glare coatings. Enjoy movies and photos like never before.
  - A TrueLife display has up to a 10% higher contrast ratio than the same display with an anti-glare coating.
  - TrueLife displays are an optional upgrade for 9400 notebooks.



**RoadReady™ Notebooks****-- Durable, Dependable, Dell**

- A design and testing philosophy applied to all Dell notebook products to help ensure uncompromised durability and reliability
- **Durable Design** - notebook products engineered to high standards for demanding on-the-go usage
  - StrikeZone™ hard drive shock absorbers
  - Use of strong, light-weight engineered materials
  - Latches, hinges, touch pads, buttons, and keyboards designed to withstand thousands to millions of cycles
- **Rigorous Testing** - exhaustive testing measures to help ensure dependable performance
  - Drop, shock, vibration, rigidity, and stress testing that simulates possible usage mishaps
  - Battery charging/ discharging, pressure chamber, humidity, and extreme heat and cold testing that simulates daily usage in a multitude of environments





## *One-button access to photos, music, and movies*

- ***True “instant on” functionality***  
Fast access to movies, music, video, and photos without the need to boot into Windows
- ***New dedicated button***  
Screened with “Home” icon intuitively ties functionality back to Windows Media Center Manager or Dell Media Experience based on configuration
- ***Great flexibility for digital content playback***  
Retrieve content from local storage devices (HDD, USB thumb drive, CD/DVD, 5-in-1 memory card reader, etc.)
- ***Wide media format support***  
Ability to play the most common file formats such as MP3, WMA, WMV, AVI, MPEG-1, MPEG-2, and more.
- ***Graphical User Interface***  
Windows-like interface including full mouse and keyboard with no need of specialized function keys
- ***Take your content on-the-go and watch what you want, when you want!***  
Watch pre-recorded TV content with available TV tuner option\*

## Dell™ Inspiron™ 9400

Entertainment Powerhouse



Two great options to enjoy more of your entertainment all in one easy-to-use place!



### Microsoft® Windows® XP Media Center 2005 Edition

Microsoft® Windows® XP Media Center 2005 Edition is an operating system that enables you to enjoy some of the best in home entertainment, personal productivity, and creativity on your home PC in a simple, complete, and connected way.

- **Watch What You Want When You Want**  
With Media Center Edition and an optional TV Tuner, you can watch and record your favorite TV shows.\*
- **Do Even More with Your Photos**  
Media Center Edition 2005 makes it easier than ever to create an instant slideshow, complete with a music soundtrack and pan-and-zoom video effects.
- **Get More Out of Music**  
Media Center Edition makes it easier than ever to play a music CD, copy it into your library, create and save playlists and edit album details. Also included is built-in support for audio CD burning directly from Media Center Edition (CD burner required for this functionality).
- **Instant Printing**  
In just a few clicks print photo's to your local printer

### Dell Media Experience™

Dell Media Experience provides a single, integrated **easy-to-use** window into all the entertainment content on your PC.



- Family-friendly & TV-compatible **interface** uses the power of the PC to bring both personal and Hollywood entertainment to life in your den, dorm or living room.
- Dell Media Experience **ships standard** on systems that are not ordered with Windows XP Media Center Edition 2005.

## Dell™ Inspiron™ 9400

Entertainment Powerhouse



### Paint Shop Photo Album

Paint Shop Photo Album is a digital photography one-stop shop for acquiring images from a digital camera or scanner; quickly improving, organizing and cataloguing photos; creating greeting cards, fliers, and Web graphics, creating presentations; to sharing photos and online photos, customers can find it all in Paint Shop Photo Album.



### Paint Shop Pro

Paint Shop Pro is a great addition to Paint Shop Photo Album. It offers photo enhancement tools such as color adjustment, scratch and artifacts remover, cloning, retouching, histogram analyzing & adjustment; powerful graphics such as layering, masking, drawing, collage, flip (mirror imaging), animation, fliers, frames & special effects; and web design tools such as download optimization, image mapping to link different areas of an image to unique URLs, and more. Dell customers can choose to purchase a license for Paint Shop Pro Dell Edition after the trial period has ended.

### Sonic DigitalMedia

With Sonic DigitalMedia it's a snap to copy CDs and DVDs, and it takes just a few mouse clicks to share or protect photos, financial records, and other important data. Music lovers will enjoy creating custom music compilation CDs and Jukebox CDs for personal use, which can contain hundreds of legally appropriate MP3, WMA, or WAV files.



### Sonic MyDVD

Experience the perfect balance of MyDVD's interactive, drag-and-drop, WYSIWYG (what you see is what you get) authoring. You can be burning your first DVD within minutes of launching MyDVD.

# Dell™ Inspiron™ 9400

*Entertainment Powerhouse*



## Dell PC Restore by Symantec

Your Inspiron 9400 system is equipped with powerful software to restore this system's original factory settings - *exactly the same way it was custom built for you*. Dell PC Restore will restore the operating system and all the original applications, but will not save your personal files, such as email, MP3s, videos, web pages, etc. Remember to save your personal files before using Dell PC Restore. Windows XP is equipped with a backup program to help you save your personal data before using Dell PC Restore.

## How does Dell PC Restore work?

It works *very fast!* PC Restore can restore your complete system in less than 10 minutes saving you time and getting you back to what you want to do. A copy of your Dell factory-installed operating system and all of the original applications are saved to a special place on the hard drive, occupying no more than 4GB\*.

## Do I have to do all the work?

Should you need to restore your system, the Dell PC Restore application automates the install process helping to minimizing any confusion you might have. This is a significant improvement to manually installing the operating system and all your applications from multiple CD, which could take hours and require multiple calls to tech support.

## Where can I learn more?

Customers can find out more about Dell PC Restore in their Owners Manual. An operating system CD is available for the advance or technical user for complex installations for an additional fee.

*NOTE: Since PC Restore restores the system to the state it was in when it was received from Dell, it will delete all data (photos, files, applications, etc.) that have been added since it was received. Customers should back-up needed data before using Dell PC Restore.*

## Dell™ Inspiron™ 9400

Entertainment Powerhouse



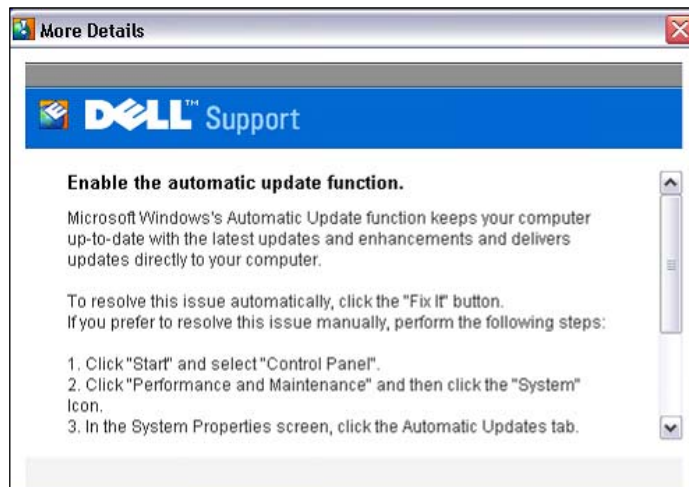
### Dell Support 3.0 (UK ONLY)

Your Inspiron 9400 system is equipped with an intelligent software service that is factory-loaded and can be personalized by you to provide automatic updates and notifications. This self support assistant will help you keep your system running at it's optimal level without the headache of trying to find out if an update is needed.

This Dell-exclusive software service is constantly updated with Dell's technical knowledge to enable real-time health scans of your computing environment (PC, peripherals, network devices), proactive alerts, automated "fixes," software updates and other relevant self-support information. You can tailor the control settings for the level of support that is right for you. All of these proactive and personalized features are designed to keep your Inspiron 9400 system updated and operating the way you want it.



Dell Support 3.0 is a small program but can be a big help with it's "Learn & Fix" presentation style as you can control when and how updates are displayed. It can also present auto-fixes before you realize a problem exists, saving you time and headaches trying to make sure your Inspiron 9400 has all the necessary updates.



**Reviews resources:**

[www.support.dell.com/DellSupportUpgrade](http://www.support.dell.com/DellSupportUpgrade) provides information on Dell Support 3.0 benefits and features.

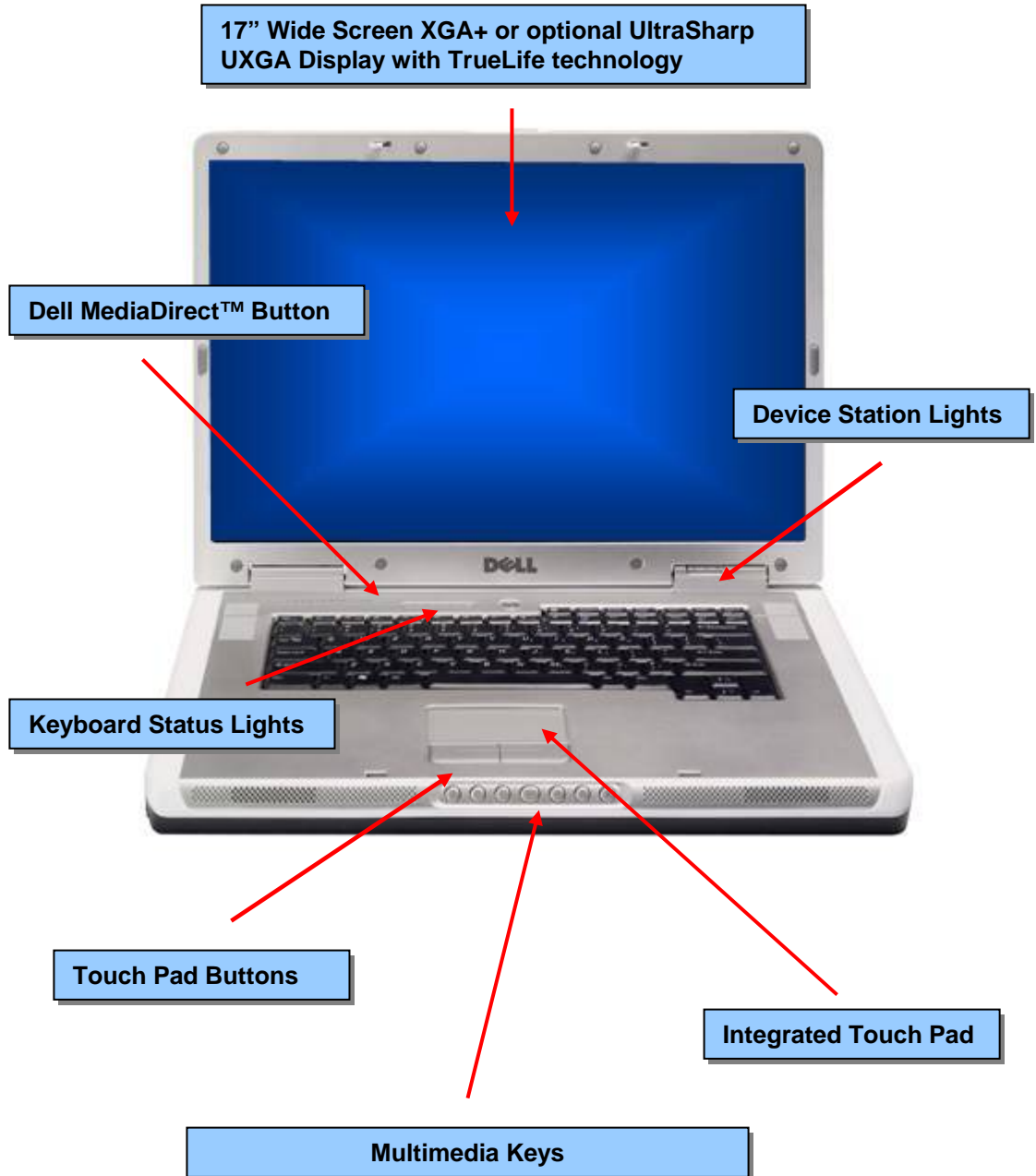
# Dell™ Inspiron™ 9400

Entertainment Powerhouse



## Front View with Display Panel Open

# FEATURES





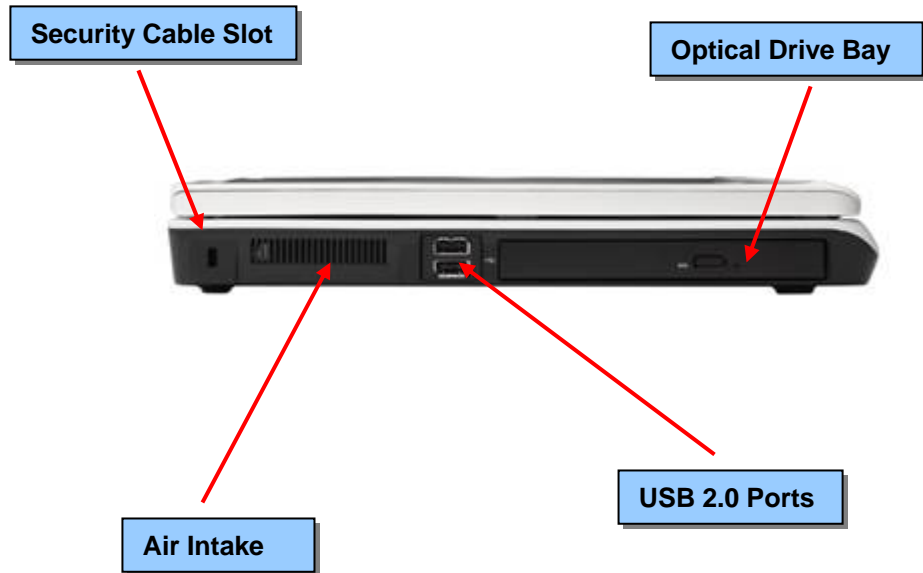
# FEATURES

## Dell™ Inspiron™ 9400

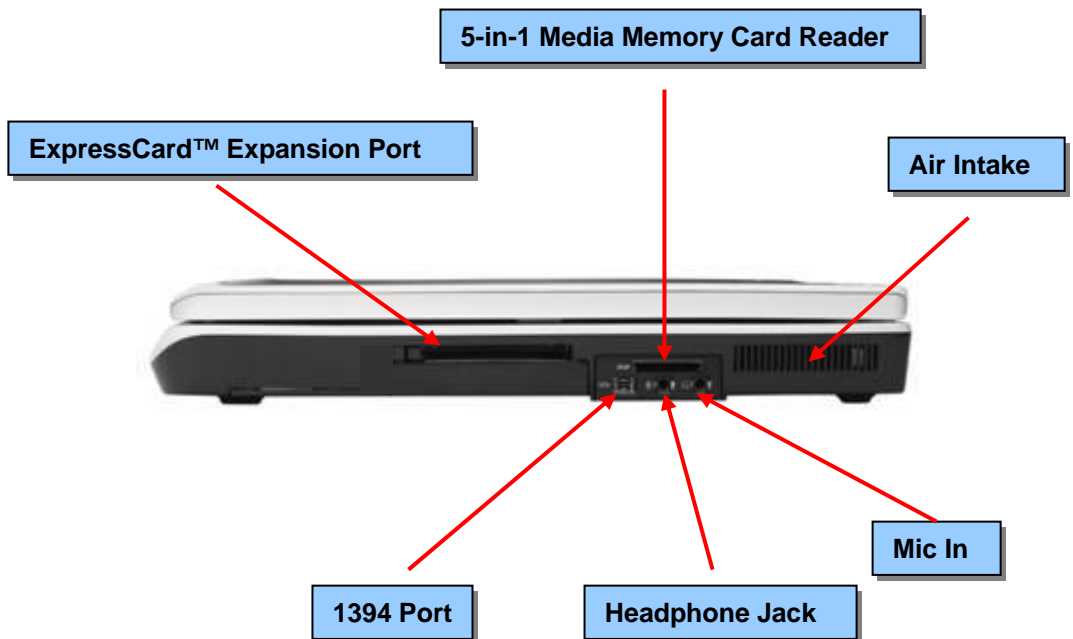
Entertainment Powerhouse



### Left View



### Right View

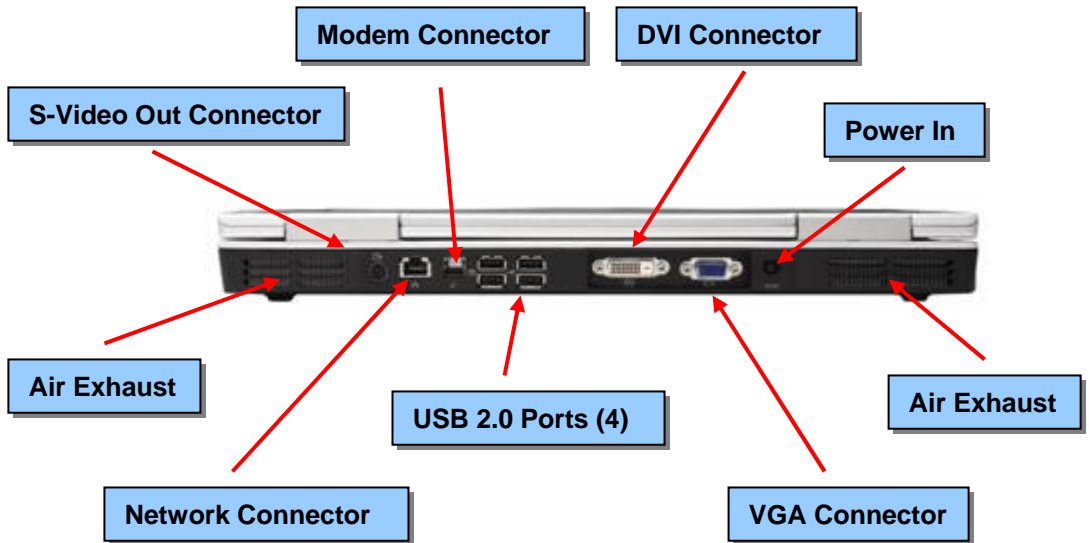


# Dell™ Inspiron™ 9400

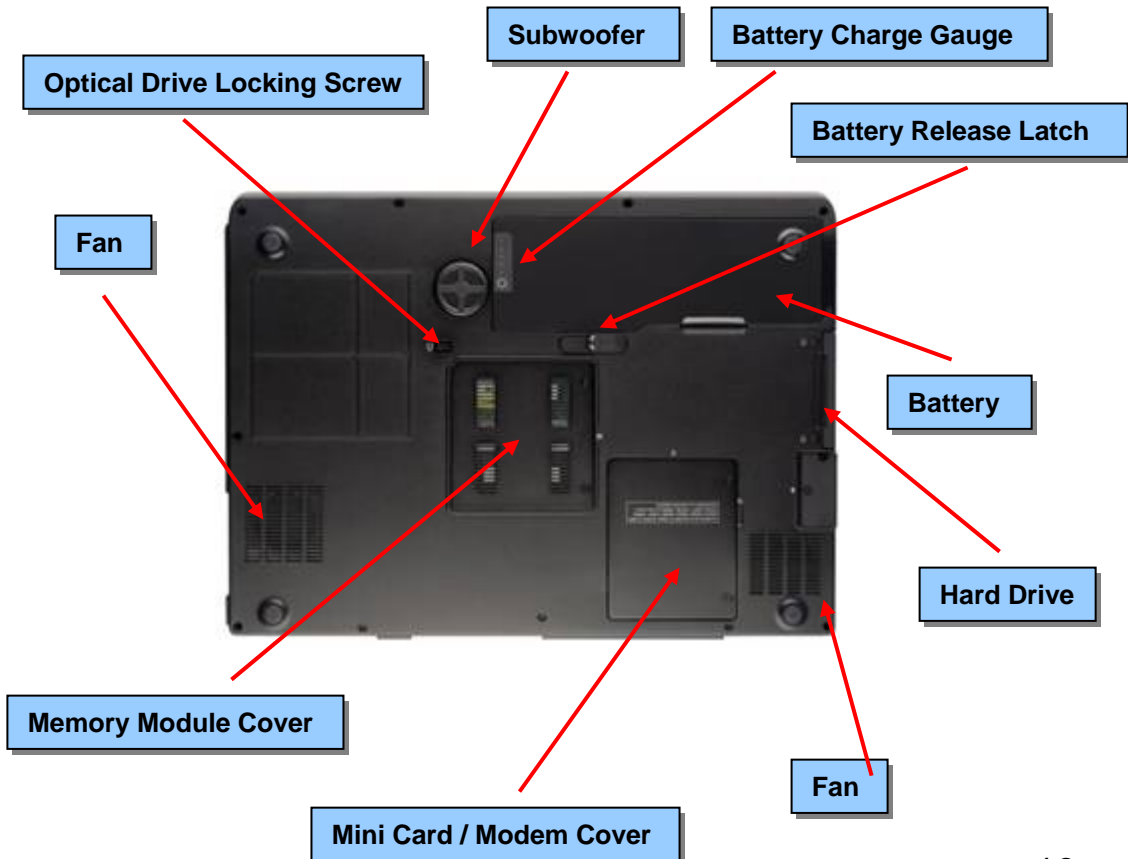
Entertainment Powerhouse



## Back View



## Bottom View



FEATURES

# Dell™ Inspiron™ 9400

Entertainment Powerhouse



## TECHNICAL SPECS

### INTEL® MICROPROCESSOR

Processor type	Intel® Core™ Solo & Duo processors
Processor speed support	Up to 2.16GHZ 667MHz
Internal L2 cache	2MB
External bus frequency	533MHz or 667MHz
Math coprocessor	Internal

### CHIPSET AND SYSTEM ARCHITECTURE

System chipset	Intel 945GM or 945PM
Processor Data bus width	64 bits
DRAM bus width	64 bits (Dual channel*)
Processor Address bus width	36 bits
PCI bus (PCI-Express for video)	x16

### SYSTEM MEMORY

Architecture	DDR2 shared* SDRAM up to 667MHz
Memory module capacities	256MB, 512MB, and 1GB
Memory module socket	Two SODIMM socket
Minimum RAM	256MB
Maximum RAM	2048MB

### 5-IN-1 MEDIA MEMORY CARD READER

5-in-1Memory Card Controller	Ricoh R5C832
5-in-1Memory Card Connector	5-in-1 Combo Card connector
Cards Supported	MS, MS Pro, SSD/SDIO, MMC, xD, CD type I/II, & IBM Microdrive through ExpressCard adapter
5-in-1 Memory Card Connector Size	36.8 x 29.3 x 4.75 mm

### EXPRESSCARD SPECIFICATIONS

Express Card Connectors	One ExpressCard slot 54mm 1.5 V and 3.3 V
Cards Supported	ExpressCard*/34 (34mm) ExpressCard*/54 (54mm)
PC Card Connector Size	26 pins

## I/O PORTS SPECIFICATION

<b>Video</b>	DVI-D (24-hole connector); VGA (15-hole)
<b>S-Video TV-out</b>	7-pin mini-DIN connector (optional S-video to composite video adapter cable; optional S-video to component video adapter cable)
<b>IEEE 1394a</b>	4-pin mini, non-powered connector
<b>Audio</b>	Microphone-in connector, stereo headphone/speakers connector
<b>USB</b>	six 4-pin USB 2.0-compliant connectors
<b>Network Adapter</b>	RJ-45
<b>Modem</b>	RJ-11

## VIDEO SPECIFICATION

<b>Discrete Video Options</b>	256MB ATI Mobility Radeon X1400 HyperMemory* or 256MB NVIDIA GeForce Go 7800
<b>Integrated Graphics Options</b>	Intel® Graphics Media Accelerator 950 with up to 128MB of shared memory

## 17" LCD SPECIFICATION

<b>Type (active-matrix TFT)</b>	WXGA+; WUXGA
<b>Dimensions</b>	
Height	245.0 mm (9.64 inches)
Width	383.0 mm (15 inches)
Diagonal	431.8 mm (17 inches)
<b>Max Resolutions/Colors</b>	
WXGA+	1440 x 900 at 16.7 million colors
WUXGA	1920 x 1200 at 16.7 million colors
<b>Refresh Rate</b>	60 Hz
<b>Viewing angles</b>	
Horizontal	+/-40° (WXGA+) +/-60° (WUXGA)
Vertical	+15° /-30° (WXGA+) +/-45° (WUXGA)
<b>Pixel Pitch</b>	0.255mm (WXGA+) 0.191mm (WUXGA)
<b>Power Consumption (panel w/ backlight)</b>	7.54W

## INTEGRATED AUDIO

<b>Audio Controller</b>	High Definition Audio (HDA) bus
<b>Stereo Conversion</b>	24-bit (analog-to-digital & digital-to-analog)
<b>Interfaces</b>	
Internal	HDA bus
External	Microphone-in connector, stereo headphone/speakers connector
<b>Internal Speaker Amplifier</b>	Stereo 2-W main speakers and 5-W subwoofer with bass reflex port
<b>Volume Controls</b>	Volume can be controlled through key combinations or application program menus

## COMMUNICATIONS

<b>Modem Type</b>	v.92 56K* MDC
<b>Modem Controller</b>	softmodem
<b>Modem Interface</b>	Internal High Definition Audio (HDA) bus
<b>Network Adapter</b>	10/100 Ethernet LAN on system board
<b>Wireless</b>	Internal PCI-e Mini-Card WLAN support; Internal card with Bluetooth® wireless technology

## KEYBOARD

<b>Number of Keys</b>	87 (US & Canada); 88 (Europe); 91 (Japan)
<b>Layout</b>	QWERTY/AZERTY/KANJI

## TOUCH PAD

<b>X/Y position resolution (graphics table mode)</b>	240 cpi
<b>Size:</b>	
Width	73.0-mm (2.9-inch) sensor-active area
Height	42.9-mm (1.70-inch) rectangle

# Dell™ Inspiron™ 9400

Entertainment Powerhouse



## TECHNICAL SPECS

### BATTERY

**Type** 9-cell (80Whr) "Smart" Lithium Ion  
6-cell (53Whr) "Smart" Lithium Ion

#### Dimensions

Height 21.5 mm (0.83 inch)  
Depth 88.5 mm (3.48 inches)  
Width 139 mm (5.47 inches)

#### Weight

0.40kg (0.88lbs) – 9-cell Li-Ion  
0.26kg (0.57lbs) – 6-cell Li-Ion

#### Voltage

14.8 VDC – 4-cell Li-Ion  
11.1VDC – 6-cell Li-Ion

#### Capacity

9-cell, 6-cell

#### Battery Life

TBD – 9 cell Li-Ion  
TBD – 6 cell Li-Ion

#### Battery Charge Time

Approximately 2 hours  
(at 100% in ~ 2 hours)  
(at 80% in ~ 1 hour)

#### Lifespan (approximate)

300 discharge/charge cycles

#### Temperature Range

Charge/Discharge 0° to 35°C (32° to 95°F)  
Storage -40° to 65° (-40° to 149°F)

### AC ADAPTER

**Input Voltage** 90 to 264 VAC

**Input Current (Maximum)** 1.5 A

**Input Frequency** 47 to 63 Hz

**Output Current** 5.62 A (maximum at 4-second pulse)  
4.62 A (continuous)

**Output Power** 90W

**Rated Output Voltage** 19.5 VDC

#### Physical

Height 34.2mm (1.35 inches)  
Width 60.8mm (2.39 inches)  
Depth 153.4mm (6.04 inches)

Weight (with cables) 0.54kg (1.19lbs.)

#### Temperature Range

Operating 0° to 40°C (32° to 104°F)  
Storage -40° to 65°C (-40° to 149°F)



### PHYSICAL CHARACTERISTICS

Height	41.5mm (1.6 inches)
Width	394mm (15.5 inches)
Depth	288mm (11.3 inches)
Weight	Estimated Weight: Starting at 3.49kg (7.7lbs)* (WXGA+ display, 6-cell battery, DVD combo drive)

### SYSTEM OPERATING CONDITIONS

#### Temperature

Operating	0° to 35°C (32° to 95°F)
Storage	-40° to 65°C (-40° to 149°F)

#### Relative Humidity

Operating	10% to 90% (non-condensing)
Storage	5% to 95% (non-condensing)

#### Maximum Vibration

Operating	0.66 GRMS
Storage	1.3 GRMS

#### Maximum Shock (measured with HDD in head-parked position)

Operating	143 G
Storage	163 G

#### Maximum Altitude

Operating	-15.2m to 3,048m (-50 ft. to 10,000 ft.)
Storage	-15.2m to 10,668m (-50 ft. to 35,000 ft.)



# Dell™ Inspiron™ 9400

## Entertainment Powerhouse

Pricing, specifications, availability, and terms of offers may change without notice. Taxes, fees, shipping, handling and any applicable restocking charges are extra, and vary. Dell cannot be responsible for pricing or other errors, and reserves the right to cancel orders arising from such errors.

- \* **Shared Memory:** Between 128 and 224 MB of system memory may be allocated to support graphics, depending on system memory size and other factors.
- \* **Dual-channel memory:** requires 2 each of the same capacity memory DIMMs
- \* **Hard Drives:** GB means 1 billion bytes; actual capacity varies with preloaded material and operating environment and will be less. On Dimension, XPS, and Inspiron systems, for Norton Ghost 10 and Dell DataSafe users, up to 25% of the stated hard drive capacity may be utilized by your system as dedicated backup space.
- \* **DVD+/-RW:** Discs burned with this drive may not be compatible with some existing drives and players; using DVD+R media provides maximum compatibility.
- \* **Dual-layer DVD writer:** Special media required, and third party software may also be required.
- \* **Modem Speeds:** Download speeds are limited to 53Kbps. Upload speeds are less (about 30Kbps). Speeds can vary by line condition and modem manufacturer. Analog phone line and service required.
- \* **Wide-Screen Resolutions:** Viewable content comparison is based on the number of pixels of a wide-screen WXGA+ LCD display versus a XGA LCD display.
- \* **17" Display:** Active Viewing Area comparison is based on screen size of a 17" LCD display versus a 15.4" LCD display.
- \* **256MB ATI Mobility™ Radeon® X1400 HyperMemory:** The total of local and shared system memory used by this graphics card is up to 256MB. Local on-board memory is 128MB. Up to 128MB of system memory may be allocated to support graphics, depending on system memory size and other factors.
- \* **Estimated weight:** pending final measurements. Starting weight of 7.7 lbs includes 17" WXGA+ LCD, 6-cell (53 W/Hr) Li-Ion battery, DVD combo drive. Weights vary depending on configurations and manufacturing variability.
  
- \* up.

Copyright 2005 Dell Inc. All rights reserved. Dell, the Dell Logo, Inspiron, and TrueMobile are trademarks of Dell Inc. Intel and Pentium are registered trademarks of Intel Corporation or its subsidiaries in the United States of America and other countries. Microsoft and Windows are registered trademarks of Microsoft Corporation. Other trademarks or trade names may be used in this document to refer to either the entities claiming the marks and names or their products. Dell disclaims proprietary interest in the marks and names of others. Reproduction in any manner whatsoever without express written permission from Dell Inc. is strictly forbidden.

IMPORTANT INFORMATION

**Dell™ Inspiron™ 9400***Entertainment Powerhouse*

Dell Inc. provides this equipment for evaluation purposes only. All equipment must be returned to Dell Inc. in good working condition.

Equipment must be in its original box, including all packaging, documentation, cables, and diskettes.

This equipment remains the property of Dell Inc. unless paid for in full by the evaluator. Dell Inc. reserves the right to collect from the evaluator the full retail value of the equipment if not returned promptly and in good working condition on or before the due date.

**Please contact <NAME> to set up  
a return for this system**

<EMAIL>  
<PHONE>