




Dell™ Vostro™ 1220 Service Manual

[Working on Your Computer](#)
[Adding and Replacing Parts](#)
[Specifications](#)
[Diagnostics](#)
[System Setup](#)

Notes, Cautions, and Warnings

-  **NOTE:** A NOTE indicates important information that helps you make better use of your computer.
-  **CAUTION:** A CAUTION indicates potential damage to hardware or loss of data if instructions are not followed.
-  **WARNING:** A WARNING indicates a potential for property damage, personal injury, or death.

If you purchased a Dell™ n Series computer, any references in this document to Microsoft® Windows® operating systems are not applicable.

Information in this document is subject to change without notice.
© 2009 Dell Inc. All rights reserved.

Reproduction of this material in any manner whatsoever without the written permission of Dell Inc. is strictly forbidden.

Trademarks used in this text: *Dell*, the *DELL* logo, *Vostro*, *ExpressCard*, and *ExpressCharge* are trademarks of Dell Inc.; *Bluetooth* is a registered trademark owned by Bluetooth SIG, Inc. and is used by Dell under license; *Microsoft*, *Windows*, *Windows Server*, and *Windows Vista* are either trademarks or registered trademarks of Microsoft Corporation in the United States and/or other countries; *Intel* and *Celeron* are registered trademarks, and *Core* and *Core2Duo* are trademarks of Intel Corporation in the U.S. and other countries; *Adobe*, the *Adobe* logo, and *Adobe Flash Player* are trademarks of Adobe Systems Incorporated.

Other trademarks and trade names may be used in this document to refer to either the entities claiming the marks and names or their products. Dell Inc. disclaims any proprietary interest in trademarks and trade names other than its own.

September 2009 Rev. A00

[Back to Contents Page](#)

System Setup

Dell™ Vostro™ 1220 Service Manual

• [Entering System Setup](#)

• [<F12> Boot Menu](#)

Entering System Setup

Press <F2> to enter System Setup and change the user-definable settings. If you have difficulty entering System Setup using this key, press <F2> when the keyboard LEDs first flash.

Navigation

Use the following keystrokes to navigate the BIOS screens.

Navigation Keystrokes	
Action	Keystroke
Expand and collapse field	<Enter>, left- or right-arrow key
Exit BIOS	<Esc> or <Alt + F4> — Remain in Setup, Save/Exit, Discard/Exit
Change a setting	Arrow key And <Enter>, or Arrow key and <Space>
Select field to change	<Tab>
Reset defaults	Load Defaults menu option

<F12> Boot Menu

Press <F12>, when the Dell logo appears, to initiate a one-time boot menu with a list of the valid boot devices for the computer. **Diagnostics** and **Enter Setup** options are also included in this menu. The devices listed on the boot menu depend on the bootable devices in the system. This menu is useful when you are attempting to boot to a particular device or to bring up the diagnostics for the system. Using the boot menu does not make any changes to the boot order stored in the BIOS.

[Back to Contents Page](#)






Diagnostics

Dell™ Vostro™ 1220 Service Manual

- [Device Status](#)
- [Battery Status](#)
- [Keyboard Status](#)
- [LED Error Codes](#)

Device Status LEDs

Device status LEDs are a good source for diagnosing common problems that may occur on your computer.

-  Turns on when you turn on the computer and blinks when the computer is in a power management mode.
-  Turns on when the computer reads or writes data.
-  Turns on steadily or blinks to indicate battery charge status.
-  Turns on when wireless networking is enabled.
-  Turns on when a card with Bluetooth® wireless technology is enabled. To turn off only the Bluetooth wireless technology function, right-click the icon in the system tray and select **Disable Bluetooth Radio**.

Battery Status

If the computer is connected to an electrical outlet, the battery light operates as follows:

- 1. **Alternately blinking amber light and blue light** — An unauthenticated or unsupported, non-Dell AC adapter is attached to your computer.
- 1. **Alternately blinking amber light with steady blue light** — Temporary battery failure with AC adapter present.
- 1. **Constantly blinking amber light** — Fatal battery failure with AC adapter present.
- 1. **Light off** — Battery in full charge mode with AC adapter present.
- 1. **Blue light on** — Battery in charge mode with AC adapter present.




Battery Charge and Health

To check the battery charge, press and release the status button on the battery charge gauge to illuminate the charge-level lights. Each light represents approximately 20 percent of the total battery charge. For example, if four lights are on, the battery has 80 percent of its charge remaining. If no lights appear, the battery has no charge.



To check the battery health using the charge gauge, press and hold the status button on the battery charge gauge for at least three seconds. If no lights appear, the battery is in good condition and more than 80 percent of its original charge capacity remains. Each light represents incremental degradation. If five lights appear, less than 60 percent of the charge capacity remains, and you should consider replacing the battery.









Keyboard Status LEDs

The green lights located above the keyboard indicate the following:

-  Turns on when the numeric keypad is enabled.
-  Turns on when the Caps Lock function is enabled.
-  Turns on when the Scroll Lock function is enabled.

LED Error Codes

Appearance	Description	Next Step
ON-FLASH-FLASH 	No SODIMMs Installed	<ol style="list-style-type: none">1. Install supported memory modules.2. If memory is already present, reseat the module(s) one at time in each slot.3. Try known good memory from another computer or replace the memory.4. Replace the system board.
FLASH-ON-ON 	System Board Error	<ol style="list-style-type: none">1. Reseat the processor.2. Replace the system board.3. Replace the processor.
FLASH-ON-FLASH		

	LCD Panel Error	<ol style="list-style-type: none"> 1. Reseat the LCD cable. 2. Replace the LCD panel. 3. Replace the video card/system board.
<p style="text-align: center;">OFF-FLASH-OFF</p> 	Memory Compatibility Error	<ol style="list-style-type: none"> 1. Install compatible memory modules. 2. If two modules are installed, remove one and test. 3. Try the second module in the same slot and test. 4. Test the other slot with both modules. 5. Replace the memory. 6. Replace the system board.
<p style="text-align: center;">ON-FLASH-ON</p> 	Memory Detected But Has Errors	<ol style="list-style-type: none"> 1. Reseat the memory. 2. If two modules are installed, remove one and test. 3. Try the second module in the same slot and test. 4. Test the other slot with both modules. 5. Replace the memory. 6. Replace the system board.
<p style="text-align: center;">OFF-FLASH-FLASH</p> 	Modem Error	<ol style="list-style-type: none"> 1. Reseat the modem. 2. Replace the modem. 3. Replace the system board.
<p style="text-align: center;">FLASH-FLASH-FLASH</p> 	System Board Error	<ol style="list-style-type: none"> 1. Replace the system board.
<p style="text-align: center;">FLASH-FLASH-OFF</p> 	Option ROM Error	<ol style="list-style-type: none"> 1. Reseat the device. 2. Replace the device. 3. Replace the system board.
<p style="text-align: center;">OFF-ON-OFF</p> 	Storage Device Error	<ol style="list-style-type: none"> 1. Reseat the hard drive and optical drive. 2. Test the computer with just the hard drive and just the optical drive. 3. Replace the device that is causing the failure. 4. Replace the system board.
<p style="text-align: center;">FLASH-FLASH-ON</p> 	Video Card Error	<ol style="list-style-type: none"> 1. Replace the system board.

[Back to Contents Page](#)

Adding and Replacing Parts

Dell™ Vostro™ 1220 Service Manual



- [Battery](#)
 - [Memory](#)
 - [Coin-Cell Battery](#)
 - [Keyboard](#)
 - [LCD Assembly](#)
 - [Bluetooth Module](#)
 - [Hard Drive](#)
 - [Fan](#)
 - [Heat Sink and Processor](#)
 - [Speaker](#)
 - [LCD Inverter](#)
 - [LCD Panel](#)
 - [LCD Hinges](#)
 - [Access Panel](#)
 - [WLAN Card](#)
 - [Hinge Cover](#)
 - [Media Bay Device](#)
 - [Palm Rest](#)
 - [TPM Module](#)
 - [I/O Panel](#)
 - [System Board](#)
 - [Modem](#)
 - [LCD Bezel](#)
 - [LCD Camera](#)
 - [LCD Rails](#)
-

[Back to Contents Page](#)

Specifications

Dell™ Vostro™ 1220 Service Manual

- [Processors](#)
- [ExpressCard](#)
- [Memory](#)
- [Connectors](#)
- [Graphics](#)
- [Display](#)
- [Touch Pad](#)
- [AC Adapter](#)
- [Physical](#)
- [System Information](#)
- [SD Card](#)
- [Communications](#)
- [Audio](#)
- [Keyboard](#)
- [Battery](#)
- [Fingerprint Reader](#)
- [Environmental](#)
- [Video](#)

 **NOTE:** Offerings may vary by region. For more information regarding the configuration of your computer, click **Start**  (or **Start** in Windows® XP)→ **Help and Support**, and then select the option to view information about your computer.

Processors	
Processor type	Intel® Celeron®, Intel Celeron Dual Core, or Intel Core™2 Duo

System Information	
Chipset	Intel GM45

ExpressCard™ The ExpressCard slot is designed only for ExpressCards. It does NOT support PC Cards.	
ExpressCard connector	ExpressCard slot (supports both USB and PCIe based interfaces)
Cards supported	34 mm ExpressCards

Secure Digital (SD) Memory Card Reader	
Cards supported	34 mm ExpressCards

Memory	
Memory module connector	2 DIMM slots
Memory module capacity	1 GB, 2 GB, or 4 GB
Memory type	DDR2 800 MHz
Minimum memory	1 GB
Maximum memory	8 GB

Communications	
Network adapter	10/100/1000 Ethernet LAN on system board
Wireless	WLAN half Mini-Card, Bluetooth® wireless technology

Connectors	
Audio	Microphone connector, mono headphones/speakers connector
Mini-Card	One dedicated half Mini-Card slot for WLAN
Network adapter	RJ-45 connector
USB	two 4-pin USB 2.0-compliant connectors

Video	15-hole VGA connector
-------	-----------------------

Audio	
Audio type	Two-channel high-definition audio codec
Audio controller	CONEXANT CX20583
Stereo conversion	24-bit (analog-to-digital and digital-to-analog)
Interfaces:	
Internal	Internal high definition audio
External	Microphone-in connector, stereo headphones/speakers mini-connector
Speakers	2 two-watt, 4-ohm speakers
Internal speaker amplifier	2-W channel, 4 ohms
Internal microphone	Single digital microphone
Volume controls	Volume control buttons

Graphics	
Integrated	
Video controller	Mobile Intel GMA X4500 Graphics Controller
Data bus	Integrated video
Video memory	Up to 256 MB of shared memory
Video output	Video connector and multimode DisplayPort

Keyboard	
Number of keys	84 (U.S. and U.K.); 84 (Europe); 87 (Japan)
Layout	QWERTY/AZERTY/Kanji

Display	
Type (active-matrix TFT)	WXGA
Active area X/Y	261.12 x 163.2
Dimensions	
Height	178.8 mm (7.039 inches)
Width	289.7 mm (11.41 inches)
Diagonal	337.8 mm (13.3 inches)
Maximum Resolution	1280 x 800 at 262 K colors
Operating angle	0° (closed) to 160°
Refresh rate	60 Hz (40 Hz in All Day Battery Life (ADBL) mode)
Viewing angles	
Horizontal	40/40°
Vertical	15/30°
Pixel pitch	0.2235 mm (0.008799 inch)
Power Consumption	
(panel with backlight, typical)	4.3 W (max)

Battery	
Type	4-cell and 6-cell
Dimensions:	
Depth	
4-cell	46.50 mm (1.83 inches)
6-cell	46.50 mm (1.83 inches)
Height	
4-cell	35.85 mm (1.41 inches)
6-cell	40.64 mm (1.60 inches)
Voltage	

4-cell	12 V (minimum), 17.7 V (maximum)
6-cell	9 V (minimum), 13.3 V (maximum)
Temperature range:	
Operating	0° to 50 °C (32° to 122°F)
Storage	-20° to 65°C (14° to 149°F)
Coin-cell battery	CR2032

Touch Pad	
X/Y position resolution (graphics table mode)	240 CPI
Size	
Width	68-mm (2.677-inch) sensor-active area
Height	37.63-mm (1.481-inch) rectangle

Fingerprint Reader (optional)	
Type	Authentic

AC Adapter	
Type	65 Watt
Input voltage	100–240 VAC
Input current (maximum)	1.5 A
Input Frequency	50–60 Hz
Output Current:	
65 W	43.34 A (maximum at 4 seconds pulse), 3.34 A (continuous)
Rated Output Voltage	19.5 VDC
Temperature range:	
Operating	0° to 40° C (32° to 104° F)
Storage	-40° to 70° C (-40° to 158° F)

Physical	
Height:	
with a CCFL panel	23.5–37.6 mm (0.93–1.48 inches)
with a WLED panel	23.5–36.6 mm (0.93–1.44 inches)
Width	294.0 mm (11.57 inches)
Depth	228.7 mm (9.00 inches)
Weight:	
with a 4-cell battery, 128 GB SSD, WLED panel, and no optical drive	152 kg (3.36 lbs)

Environmental	
Temperature range:	
Operating	0° to 35°C (32° to 95°F)
Storage	-40° to 65°C (-40° to 149°F)
Relative humidity (maximum):	
Operating	10% to 90% (noncondensing)
Storage	5% to 95% (noncondensing)

Video	
Video type	integrated on system board
Data bus	integrated video

Video controller	Intel Extreme Graphics
Video memory	up to 256 MB (shared)

[Back to Contents Page](#)

[Back to Contents Page](#)

Battery

Dell™ Vostro™ 1220 Service Manual

⚠ WARNING: Before working inside your computer, read the safety information that shipped with your computer. For additional safety best practices information, see the Regulatory Compliance Homepage at www.dell.com/regulatory_compliance.

Removing the Battery



🔧 NOTE: You may need to install Adobe Flash Player from Adobe.com in order to view the illustrations below.

1. Follow the procedures in [Before Working Inside Your Computer](#).
2. During installation or removal of ANY hardware, always ensure that all data is backed up properly.
3. Slide the battery release latches into the unlock position.

4. Remove the battery from the computer.



[Back to Contents Page](#)

[Back to Contents Page](#)

Access Panel

Dell™ Vostro™ 1220 Service Manual

WARNING: Before working inside your computer, read the safety information that shipped with your computer. For additional safety best practices information, see the Regulatory Compliance Homepage at www.dell.com/regulatory_compliance.

Removing the Access Panel



NOTE: You may need to install Adobe Flash Player from Adobe.com in order to view the illustrations below.

1. Follow the procedures in [Before Working Inside Your Computer](#).
2. During installation or removal of ANY hardware, always ensure that all data is backed up properly.
3. Remove the [battery](#) from the computer.
4. Loosen the two captive screws securing the access panel.

5. Remove the access panel.



[Back to Contents Page](#)

[Back to Contents Page](#)

Memory

Dell™ Vostro™ 1220 Service Manual

WARNING: Before working inside your computer, read the safety information that shipped with your computer. For additional safety best practices information, see the Regulatory Compliance Homepage at www.dell.com/regulatory_compliance.

Removing the Memory

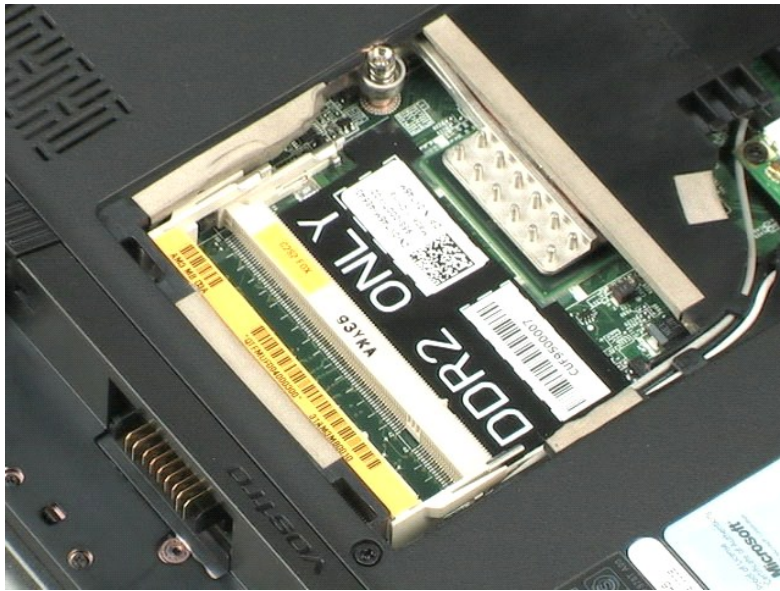


NOTE: You may need to install Adobe Flash Player from Adobe.com in order to view the illustrations below.

1. Follow the procedures in [Before Working Inside Your Computer](#).
2. During installation or removal of ANY hardware, always ensure all data is backed up properly.
3. Remove the [battery](#) and the [access panel](#) from the computer.
4. Gently pry the memory retention clips away from the memory.

5. Remove the memory.

6. Repeat the previous steps for any additional memory needing servicing.



[Back to Contents Page](#)

[Back to Contents Page](#)

WLAN Card

Dell™ Vostro™ 1220 Service Manual

WARNING: Before working inside your computer, read the safety information that shipped with your computer. For additional safety best practices information, see the Regulatory Compliance Homepage at www.dell.com/regulatory_compliance.

Removing the WLAN Card

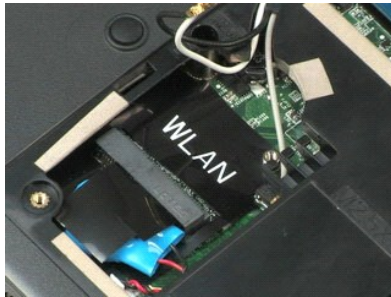


NOTE: You may need to install Adobe Flash Player from Adobe.com in order to view the illustrations below.

1. Follow the procedures in [Before Working Inside Your Computer](#).
2. During installation or removal of ANY hardware, always ensure all data is backed up properly.
3. Remove the [battery](#) and the [access panel](#) from the computer.
4. Disconnect the antennas from the WLAN card.

5. Remove the screw that secures the WLAN card to the computer.

6. Remove the WLAN card from the computer.



[Back to Contents Page](#)

[Back to Contents Page](#)

Coin-Cell Battery

Dell™ Vostro™ 1220 Service Manual

WARNING: Before working inside your computer, read the safety information that shipped with your computer. For additional safety best practices information, see the Regulatory Compliance Homepage at www.dell.com/regulatory_compliance.

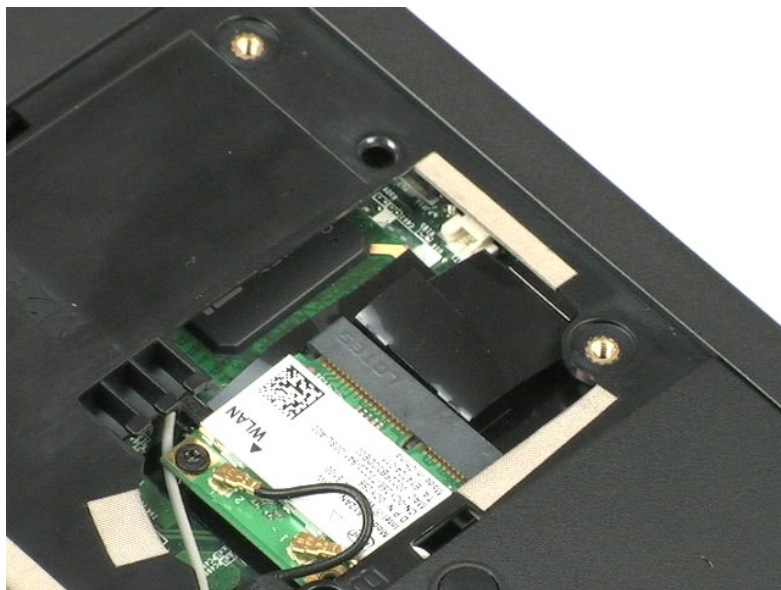
Removing the Coin-Cell Battery



NOTE: You may need to install Adobe Flash Player from Adobe.com in order to view the illustrations below.

1. Follow the procedures in [Before Working Inside Your Computer](#).
2. During installation or removal of ANY hardware, always ensure all data is backed up properly.
3. Remove the [battery](#) and the [access panel](#) from the computer.
4. Disconnect the battery cable.

5. Remove the coin-cell battery.



[Back to Contents Page](#)

[Back to Contents Page](#)

Hinge Cover

Dell™ Vostro™ 1220 Service Manual

WARNING: Before working inside your computer, read the safety information that shipped with your computer. For additional safety best practices information, see the Regulatory Compliance Homepage at www.dell.com/regulatory_compliance.

Removing the Hinge Cover



NOTE: You may need to install Adobe Flash Player from Adobe.com in order to view the illustrations below.

1. Follow the procedures in [Before Working Inside Your Computer](#).
2. During installation or removal of ANY hardware, always ensure all data is backed up properly.
3. Remove the [battery](#) from the computer.
4. Gently pry up the hinge cover.

5. Flip over the hinge cover toward the keyboard.

6. Disconnect the multimedia board cable.

7. Remove the hinge cover.



[Back to Contents Page](#)

[Back to Contents Page](#)

Keyboard

Dell™ Vostro™ 1220 Service Manual

WARNING: Before working inside your computer, read the safety information that shipped with your computer. For additional safety best practices information, see the Regulatory Compliance Homepage at www.dell.com/regulatory_compliance.

Removing the Keyboard



NOTE: You may need to install Adobe Flash Player from Adobe.com in order to view the illustrations below.

1. Follow the procedures in [Before Working Inside Your Computer](#).
2. During installation or removal of ANY hardware, always ensure all data is backed up properly.
3. Remove the battery and the hinge cover from the system.
4. Remove the three screws securing the keyboard.

5. Flip over the keyboard.

6. Disconnect the keyboard cable.

7. Lift the keyboard away from the system.



[Back to Contents Page](#)

[Back to Contents Page](#)

Media Bay Device

Dell™ Vostro™ 1220 Service Manual

WARNING: Before working inside your computer, read the safety information that shipped with your computer. For additional safety best practices information, see the Regulatory Compliance Homepage at www.dell.com/regulatory_compliance.

Removing the Media Bay Device



NOTE: You may need to install Adobe Flash Player from Adobe.com in order to view the illustrations below.

1. Follow the procedures in [Before Working Inside Your Computer](#).
 2. During installation or removal of ANY hardware, always ensure all data is backed up properly.
 3. Remove the [battery](#) from the computer.
 4. Remove the one screw securing the media bay device in place.
-
5. Slide the media bay device out of the system.



[Back to Contents Page](#)

[Back to Contents Page](#)

LCD Assembly

Dell™ Vostro™ 1220 Service Manual

WARNING: Before working inside your computer, read the safety information that shipped with your computer. For additional safety best practices information, see the Regulatory Compliance Homepage at www.dell.com/regulatory_compliance.

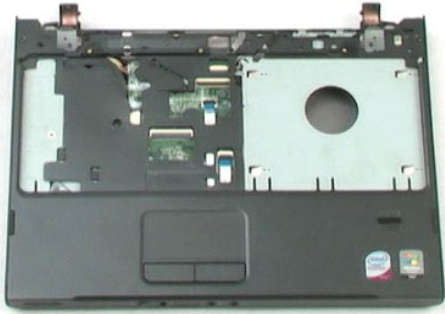
Removing the LCD Assembly



NOTE: You may need to install Adobe Flash Player from Adobe.com in order to view the illustrations below.

1. Follow the procedures in [Before Working Inside Your Computer](#).
2. During installation or removal of ANY hardware, always ensure all data is backed up properly.
3. Remove the battery, hinge cover, keyboard, and optical drive from the system.
4. Disconnect the antennas from the WLAN card (if installed).
5. Unroute the antenna cables.
6. Flip the system over and open the LCD.
7. Remove the screw securing the grounding cable.
8. Disconnect the LCD cable from the system board.
9. Finish unrouting the antenna cables.
10. Remove the six screws securing the LCD assembly.

11. Lift the LCD assembly away from the system.



[Back to Contents Page](#)

[Back to Contents Page](#)

Palm Rest

Dell™ Vostro™ 1220 Service Manual

WARNING: Before working inside your computer, read the safety information that shipped with your computer. For additional safety best practices information, see the Regulatory Compliance Homepage at www.dell.com/regulatory_compliance.

Removing Palm Rest



NOTE: You may need to install Adobe Flash Player from Adobe.com in order to view the illustrations below.

1. Follow the procedures in [Before Working Inside Your Computer](#).
2. During installation or removal of ANY hardware, always ensure all data is backed up properly.
3. Remove the battery, hinge cover, keyboard, optical drive, and LCD assembly from the system.
4. Remove the nine screws that secure the palm rest to the bottom of the computer.

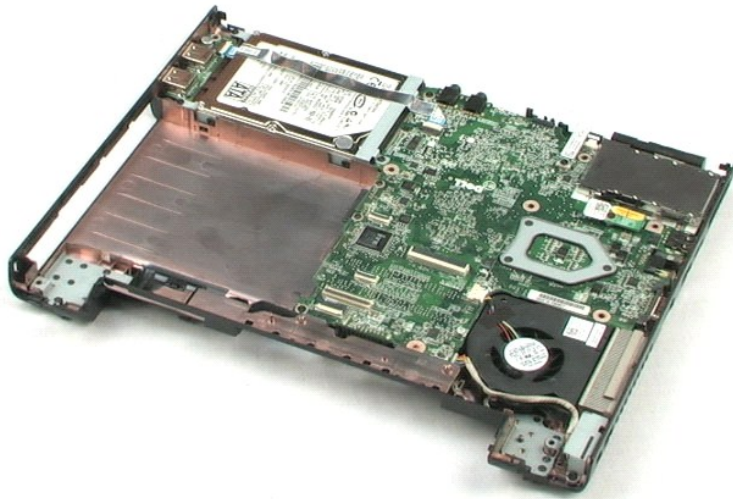
5. Turn the computer over.

6. Remove the three screws that secure the palm rest to the top of the computer.

7. Disconnect the palm rest cable from the system board.

8. Disconnect the palm rest cable from the system board.

9. Carefully remove the palm rest from the computer.



[Back to Contents Page](#)

[Back to Contents Page](#)

Internal Module With Bluetooth® Wireless Technology

Dell™ Vostro™ 1220 Service Manual

WARNING: Before working inside your computer, read the safety information that shipped with your computer. For additional safety best practices information, see the Regulatory Compliance Homepage at www.dell.com/regulatory_compliance.

Removing the Bluetooth Module



NOTE: You may need to install Adobe Flash Player from Adobe.com in order to view the illustrations below.

1. Follow the procedures in [Before Working Inside Your Computer](#).
2. During installation or removal of ANY hardware, always ensure all data is backed up properly.
3. Remove the battery, hinge cover, keyboard, optical drive, LCD assembly, and palm rest from the system.
4. Remove the screw securing the Bluetooth module.

5. Lift the Bluetooth module away from the system board.



[Back to Contents Page](#)

[Back to Contents Page](#)

TPM Module

Dell™ Vostro™ 1220 Service Manual

WARNING: Before working inside your computer, read the safety information that shipped with your computer. For additional safety best practices information, see the Regulatory Compliance Homepage at www.dell.com/regulatory_compliance.

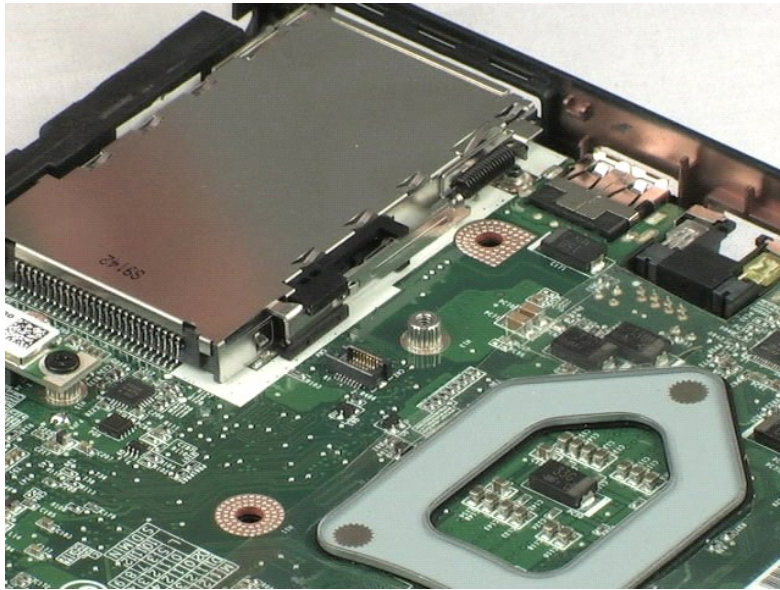
Removing the TPM Module



NOTE: You may need to install Adobe Flash Player from Adobe.com in order to view the illustrations below.

1. Follow the procedures in [Before Working Inside Your Computer](#).
2. During installation or removal of ANY hardware, always ensure all data is backed up properly.
3. Remove the battery, hinge cover, keyboard, optical drive, LCD assembly, and palm rest from the system.
4. Remove the screw securing the TPM module.

5. Lift the TPM module away from the system board.



[Back to Contents Page](#)

Hard Drive

Dell™ Vostro™ 1220 Service Manual

WARNING: Before working inside your computer, read the safety information that shipped with your computer. For additional safety best practices information, see the Regulatory Compliance Homepage at www.dell.com/regulatory_compliance.

Removing the Hard Drive



NOTE: You may need to install Adobe Flash Player from Adobe.com in order to view the illustrations below.

1. Follow the procedures in [Before Working Inside Your Computer](#).
2. During installation or removal of ANY hardware, always ensure all data is backed up properly.
3. Remove the battery, hinge cover, keyboard, optical drive, LCD assembly, and palm rest from the system.
4. Disconnect the USB cable that has been routed across the hard drive.

5. Remove the two screws that secure the back of the hard drive assembly to the computer.

6. Remove the two screws that secure the front of the hard drive assembly to the computer.

7. Slide the drive toward the I/O panel.

8. Lift the drive from the computer.

9. Remove the two screws that secure the hard drive bracket to one side of the hard drive.

10. Turn the drive around.

11. Remove the two screws that secure the hard drive bracket to the other side of the hard drive.

12. Lift the hard drive bracket from the hard drive.



[Back to Contents Page](#)

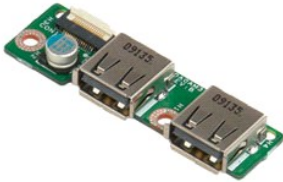
[Back to Contents Page](#)

I/O Panel

Dell™ Vostro™ 1220 Service Manual

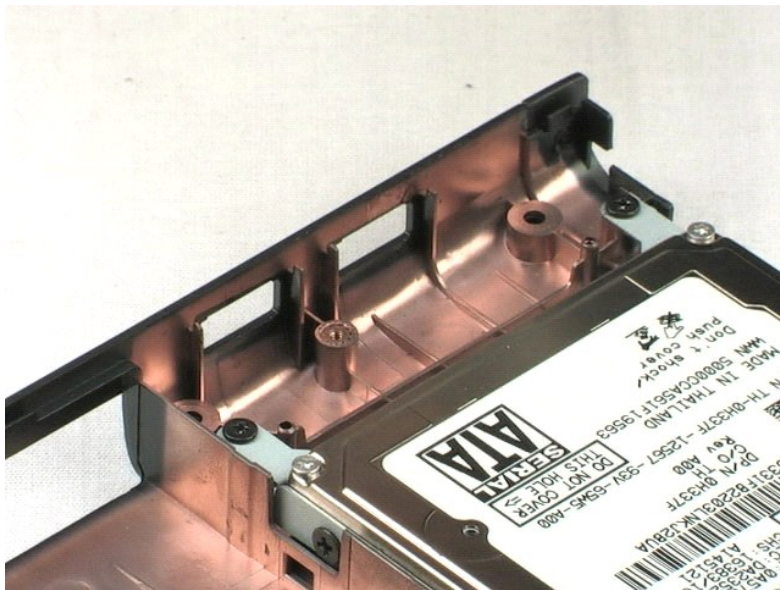
WARNING: Before working inside your computer, read the safety information that shipped with your computer. For additional safety best practices information, see the Regulatory Compliance Homepage at www.dell.com/regulatory_compliance.

Removing the I/O Panel



NOTE: You may need to install Adobe Flash Player from Adobe.com in order to view the illustrations below.

1. Follow the procedures in [Before Working Inside Your Computer](#).
2. During installation or removal of ANY hardware, always ensure all data is backed up properly.
3. Remove the battery, hinge cover, keyboard, optical drive, LCD assembly, and palm rest from the system.
4. Disconnect the I/O panel cable.
5. Remove the screw securing the I/O panel board.
6. Remove the I/O panel board from the system.



[Back to Contents Page](#)

[Back to Contents Page](#)

Fan

Dell™ Vostro™ 1220 Service Manual

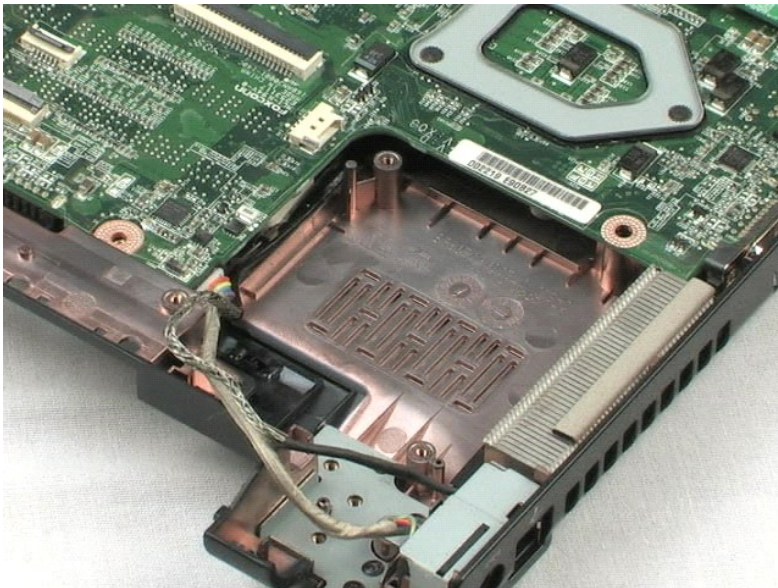
WARNING: Before working inside your computer, read the safety information that shipped with your computer. For additional safety best practices information, see the Regulatory Compliance Homepage at www.dell.com/regulatory_compliance.

Removing the Fan



NOTE: You may need to install Adobe Flash Player from Adobe.com in order to view the illustrations below.

1. Follow the procedures in [Before Working Inside Your Computer](#).
2. During installation or removal of ANY hardware, always ensure all data is backed up properly.
3. Remove the battery, hinge cover, keyboard, optical drive, LCD assembly, and palm rest from the system.
4. Disconnect the fan cable.
5. Unroute the cables routed through the fan.
6. Remove the screw securing the fan to the system.
7. Lift the fan out of the system.



[Back to Contents Page](#)

[Back to Contents Page](#)

System Board

Dell™ Vostro™ 1220 Service Manual

WARNING: Before working inside your computer, read the safety information that shipped with your computer. For additional safety best practices information, see the Regulatory Compliance Homepage at www.dell.com/regulatory_compliance.

Removing the System Board



NOTE: You may need to install Adobe Flash Player from Adobe.com in order to view the illustrations below.

1. Follow the procedures in [Before Working Inside Your Computer](#).
2. During installation or removal of ANY hardware, always ensure all data is backed up properly.
3. Remove the battery, hinge cover, keyboard, optical drive, LCD assembly, palm rest, Bluetooth® module, TPM module, hard drive, I/O panel board, and system fan from the system.
4. Disconnect the speaker cable from the system board.

5. Disconnect the power cable from the system board.

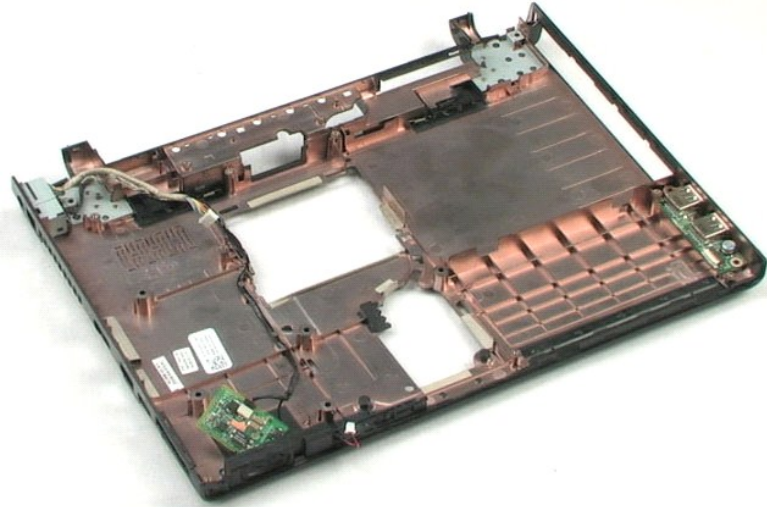
6. Remove the three screws securing the system board to the bottom plastics.

7. Gently flip the system board over.

8. Remove the screw securing the modem grounding cable.

9. Lift the modem away from the system board.

10. Lift the system board away from the system.



[Back to Contents Page](#)

Heat Sink and Processor

Dell™ Vostro™ 1220 Service Manual

WARNING: Before working inside your computer, read the safety information that shipped with your computer. For additional safety best practices information, see the Regulatory Compliance Homepage at www.dell.com/regulatory_compliance.

Removing the Heat Sink and Processor



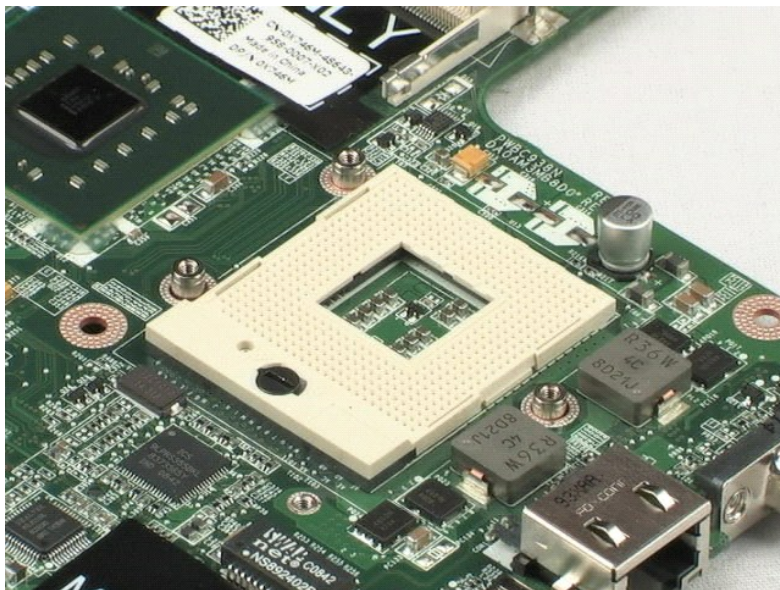
NOTE: You may need to install Adobe Flash Player from Adobe.com in order to view the illustrations below.

1. Follow the procedures in [Before Working Inside Your Computer](#).
2. During installation or removal of ANY hardware, always ensure all data is backed up properly.
3. Remove the battery, hinge cover, keyboard, optical drive, LCD assembly, palm rest, Bluetooth® module, TPM module, hard drive, I/O panel board, system fan, and system board from the computer.
4. Loosen the three screws securing the heat sink to the system board.

5. Lift the heat sink away from the system board.

6. Using a flathead screwdriver, rotate the locking cam counter clockwise.

7. Lift and remove the processor out of its socket.



[Back to Contents Page](#)

[Back to Contents Page](#)

Modem

Dell™ Vostro™ 1220 Service Manual

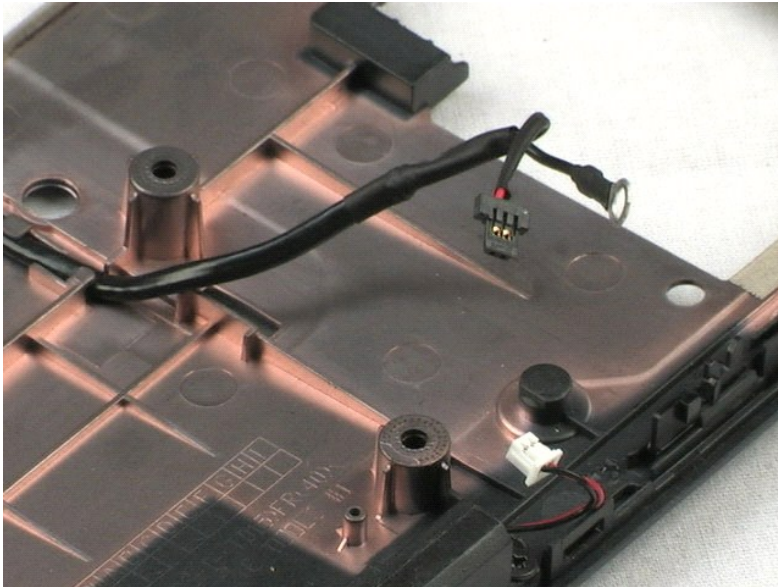
⚠ WARNING: Before working inside your computer, read the safety information that shipped with your computer. For additional safety best practices information, see the Regulatory Compliance Homepage at www.dell.com/regulatory_compliance.

Removing the Modem



🔍 NOTE: You may need to install Adobe Flash Player from Adobe.com in order to view the illustrations below.

1. Follow the procedures in [Before Working Inside Your Computer](#).
2. During installation or removal of ANY hardware, always ensure all data is backed up properly.
3. Remove the battery, hinge cover, keyboard, optical drive, LCD assembly, palm rest, Bluetooth® module, TPM module, hard drive, I/O panel board, system fan, and system board from the system.
4. Disconnect the modem cable from the modem and remove from the system.



[Back to Contents Page](#)

Speaker

Dell™ Vostro™ 1220 Service Manual

WARNING: Before working inside your computer, read the safety information that shipped with your computer. For additional safety best practices information, see the Regulatory Compliance Homepage at www.dell.com/regulatory_compliance.

Removing the Speaker



NOTE: You may need to install Adobe Flash Player from Adobe.com in order to view the illustrations below.

1. Follow the procedures in [Before Working Inside Your Computer](#).
2. During installation or removal of ANY hardware, always ensure all data is backed up properly.
3. Remove the battery, keyboard, access panel, LCD assembly and system board from the system.
4. Disconnect the speaker cable from the system board.

5. Remove the two screws securing the speaker to the bottom plastics.

6. Remove the speaker from the system.



[Back to Contents Page](#)

LCD Bezel

Dell™ Vostro™ 1220 Service Manual

WARNING: Before working inside your computer, read the safety information that shipped with your computer. For additional safety best practices information, see the Regulatory Compliance Homepage at www.dell.com/regulatory_compliance.

Removing the LCD Bezel



NOTE: You may need to install Adobe Flash Player from Adobe.com in order to view the illustrations below.

1. Follow the procedures in [Before Working Inside Your Computer](#).
2. During installation or removal of ANY hardware, always ensure all data is backed up properly.
3. Remove the battery, hinge cover, keyboard, optical drive, and LCD assembly from the system.
4. Gently pry the LCD bezel from the LCD assembly.

5. Lift the LCD bezel away from the LCD assembly.



[Back to Contents Page](#)

[Back to Contents Page](#)

LCD Inverter

Dell™ Vostro™ 1220 Service Manual

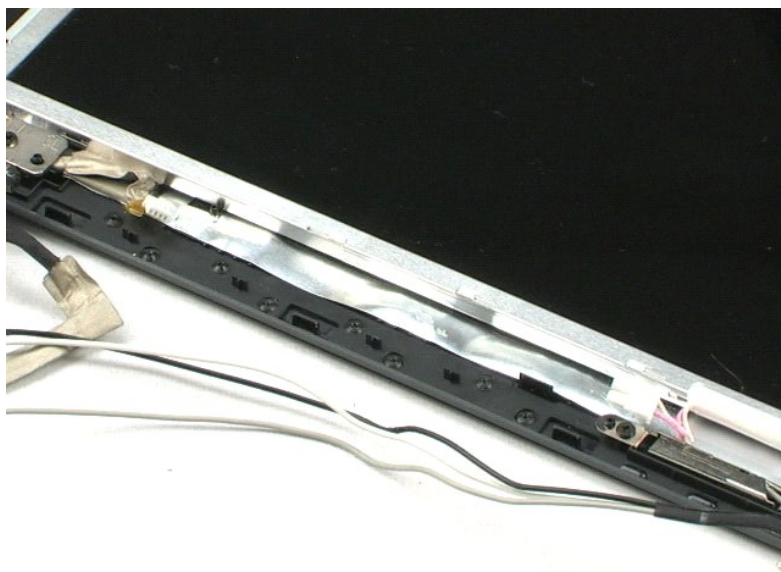
WARNING: Before working inside your computer, read the safety information that shipped with your computer. For additional safety best practices information, see the Regulatory Compliance Homepage at www.dell.com/regulatory_compliance.

Removing the LCD Inverter



NOTE: You may need to install Adobe Flash Player from Adobe.com in order to view the illustrations below.

1. Follow the procedures in [Before Working Inside Your Computer](#).
2. During installation or removal of ANY hardware, always ensure all data is backed up properly.
3. Remove the battery, hinge cover, keyboard, optical drive, LCD assembly, and LCD bezel from the system.
4. Disconnect the cable from the inverter.
5. Disconnect the other cable from the inverter.
6. Peel the LCD inverter away from the LCD assembly.



[Back to Contents Page](#)

[Back to Contents Page](#)

LCD Camera

Dell™ Vostro™ 1220 Service Manual

WARNING: Before working inside your computer, read the safety information that shipped with your computer. For additional safety best practices information, see the Regulatory Compliance Homepage at www.dell.com/regulatory_compliance.

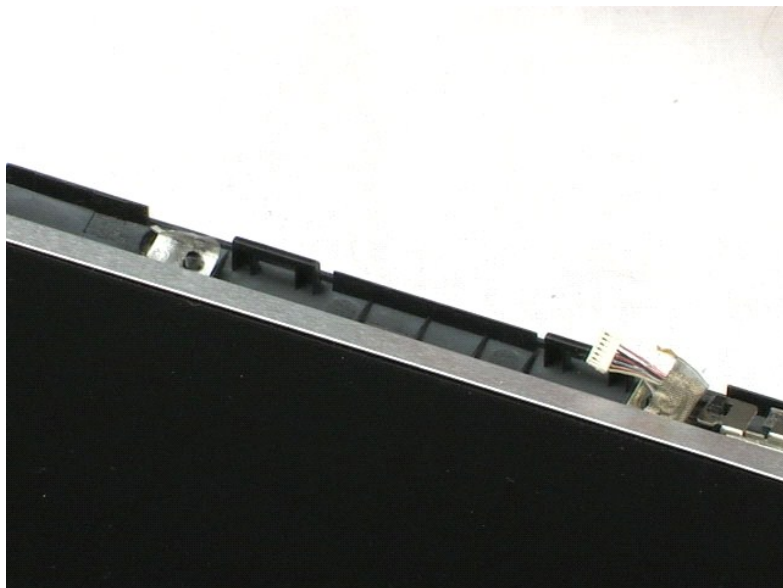
Removing the LCD Camera



NOTE: You may need to install Adobe Flash Player from Adobe.com in order to view the illustrations below.

1. Follow the procedures in [Before Working Inside Your Computer](#).
2. During installation or removal of ANY hardware always ensure all data is backed up properly.
3. Remove the battery, hinge cover, keyboard, optical drive, LCD assembly, and LCD bezel from the system.
4. Disconnect the camera cable from the camera.

5. Peel the camera away from the LCD assembly.



[Back to Contents Page](#)

[Back to Contents Page](#)

LCD Panel

Dell™ Vostro™ 1220 Service Manual

WARNING: Before working inside your computer, read the safety information that shipped with your computer. For additional safety best practices information, see the Regulatory Compliance Homepage at www.dell.com/regulatory_compliance.

Removing the LCD Panel



NOTE: You may need to install Adobe Flash Player from Adobe.com in order to view the illustrations below.

1. Follow the procedures in [Before Working Inside Your Computer](#).
2. During installation or removal of ANY hardware, always ensure all data is backed up properly.
3. Remove the battery, hinge cover, keyboard, optical drive, LCD assembly, and LCD bezel from the system.
4. Disconnect the camera cable from the camera.

5. Disconnect the white and pink cable from the LCD inverter.

6. Remove the six screws securing the LCD panel to the LCD assembly.

7. Flip the LCD panel over.

8. Disconnect the LCD cable from the LCD panel.

9. Lift the LCD panel away from the LCD plastics.



[Back to Contents Page](#)

[Back to Contents Page](#)

LCD Rails

Dell™ Vostro™ 1220 Service Manual

WARNING: Before working inside your computer, read the safety information that shipped with your computer. For additional safety best practices information, see the Regulatory Compliance Homepage at www.dell.com/regulatory_compliance.

Removing the LCD Rails



NOTE: You may need to install Adobe Flash Player from Adobe.com in order to view the illustrations below.

1. Follow the procedures in [Before Working Inside Your Computer](#).
2. During installation or removal of ANY hardware, always ensure all data is backed up properly.
3. Remove the battery, hinge cover, keyboard, optical drive, LCD assembly, LCD bezel and LCD panel from the system.
4. Remove the two screws from one of the LCD rails.
5. Remove the LCD rail away from the LCD panel.
6. Turn the LCD panel around.
7. Remove the two screws from the other LCD rail.
8. Remove the remaining LCD rail away from the LCD panel.



[Back to Contents Page](#)

[Back to Contents Page](#)

LCD Hinges

Dell™ Vostro™ 1220 Service Manual

⚠ WARNING: Before working inside your computer, read the safety information that shipped with your computer. For additional safety best practices information, see the Regulatory Compliance Homepage at www.dell.com/regulatory_compliance.

Removing the LCD Hinges



🔍 NOTE: You may need to install Adobe Flash Player from Adobe.com in order to view the illustrations below.

1. Follow the procedures in [Before Working Inside Your Computer](#).
2. During installation or removal of ANY hardware, always ensure all data is backed up properly.
3. Remove the battery, hinge cover, keyboard, optical drive, LCD assembly, LCD bezel and LCD panel from the system.
4. Remove the screw securing the right hinge.

5. Remove the right hinge.

6. Remove the screw securing the left hinge.

7. Remove the left hinge.



[Back to Contents Page](#)

[Back to Contents Page](#)

Working on Your Computer







Dell™ Vostro™ 1220 Service Manual

- [Before Working Inside Your Computer](#)
 - [Recommended Tools](#)
 - [Turning Off Your Computer](#)
 - [After Working Inside Your Computer](#)
-





Before Working Inside Your Computer

Use the following safety guidelines to help protect your computer from potential damage and to help to ensure your personal safety. Unless otherwise noted, each procedure included in this document assumes that the following conditions exist:

- 1 You have performed the steps provided below.
- 1 You have read the safety information that shipped with your computer.
- 1 A component can be replaced or--if purchased separately--installed by performing the removal procedure in reverse order.

-  **WARNING:** Before working inside your computer, read the safety information that shipped with your computer. For additional safety best practices information, see the Regulatory Compliance Homepage at www.dell.com/regulatory_compliance.
-  **CAUTION:** Many repairs may only be done by a certified service technician. You should only perform troubleshooting and simple repairs as authorized in your product documentation, or as directed by the online or telephone service and support team. Damage due to servicing that is not authorized by Dell is not covered by your warranty. Read and follow the safety instructions that came with the product.
-  **CAUTION:** To avoid electrostatic discharge, ground yourself by using a wrist grounding strap or by periodically touching an unpainted metal surface, such as a connector on the back of the computer.
-  **CAUTION:** Handle components and cards with care. Do not touch the components or contacts on a card. Hold a card by its edges or by its metal mounting bracket. Hold a component such as a processor by its edges, not by its pins.
-  **CAUTION:** When you disconnect a cable, pull on its connector or on its pull-tab, not on the cable itself. Some cables have connectors with locking tabs; if you are disconnecting this type of cable, press in on the locking tabs before you disconnect the cable. As you pull connectors apart, keep them evenly aligned to avoid bending any connector pins. Also, before you connect a cable, ensure that both connectors are correctly oriented and aligned.
-  **NOTE:** The color of your computer and certain components may appear differently than shown in this document.

To avoid damaging your computer, perform the following steps before you begin working inside the computer.

1. Ensure that your work surface is flat and clean to prevent the computer cover from being scratched.
 2. Turn off your computer (see [Turning Off Your Computer](#)).
 3. If the computer is connected to a docking device (docked) such as the optional Media Base or Battery Slice, undock it.
-  **CAUTION:** To disconnect a network cable, first unplug the cable from your computer and then unplug the cable from the network device.
4. Disconnect all network cables from the computer.
 5. Disconnect your computer and all attached devices from their electrical outlets.
 6. Close the display and turn the computer upside-down on a flat work surface.
-  **CAUTION:** To avoid damaging the system board, you must remove the main battery before you service the computer.
7. Remove the main battery (see [Removing the Battery](#)).
 8. Turn the computer top-side up.
 9. Open the display.
 10. Press the power button to ground the system board.
-  **CAUTION:** To guard against electrical shock, always unplug your computer from the electrical outlet before opening the display.
 -  **CAUTION:** Before touching anything inside your computer, ground yourself by touching an unpainted metal surface, such as the metal at the back of the computer. While you work, periodically touch an unpainted metal surface to dissipate static electricity, which could harm internal components.
11. Remove any installed ExpressCards or Smart Cards from the appropriate slots.
 12. Remove the hard drive (see [Removing the Hard Drive](#)).

Recommended Tools

The procedures in this document may require the following tools:


- 1 Small flat-blade screwdriver
- 1 #0 Phillips screwdriver
- 1 #1 Phillips screwdriver
- 1 Small plastic scribe
- 1 Flash BIOS update program CD

Turning Off Your Computer

-  **CAUTION:** To avoid losing data, save and close all open files and exit all open programs before you turn off your computer.

1. Shut down the operating system:

- 1 In Windows Vista®:

Click **Start** , then click the arrow in the lower-right corner of the **Start** menu as shown below, and then click **Shut Down**.



- 1 In Windows® XP:

Click **Start**→ **Turn Off Computer**→ **Turn Off**.

The computer turns off after the operating system shutdown process is complete.


2. Ensure that the computer and all attached devices are turned off. If your computer and attached devices did not automatically turn off when you shut down your operating system, press and hold the power button for about 4 seconds to turn them off.

After Working Inside Your Computer

After you complete any replacement procedure, ensure you connect any external devices, cards, and cables before turning on your computer.

 **CAUTION:** To avoid damage to the computer, use only the battery designed for this particular Dell computer. Do not use batteries designed for other Dell computers.

1. Connect any external devices, such as a port replicator, battery slice, or media base, and replace any cards, such as an ExpressCard.
2. Connect any telephone or network cables to your computer.

 **CAUTION:** To connect a network cable, first plug the cable into the network device and then plug it into the computer.

3. Replace the [battery](#).
4. Connect your computer and all attached devices to their electrical outlets.
5. Turn on your computer.

[Back to Contents Page](#)