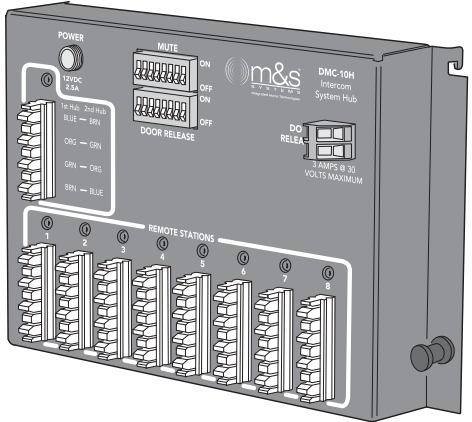




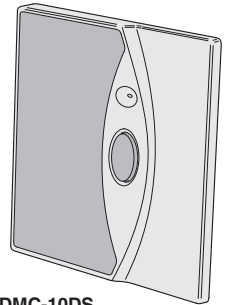
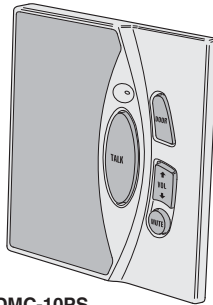
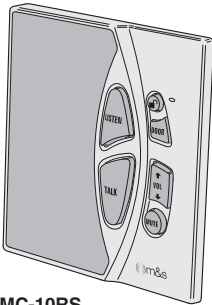
# DMC-10

## Structured Wire Intercom System

### Installation and Operation Instructions



**DMC-10H**  
Intercom Hub



**Linear**<sup>®</sup>

(760) 438-7000

USA & Canada (800) 421-1587 & (800) 392-0123

Toll Free FAX (800) 468-1340

[www.linearcorp.com](http://www.linearcorp.com)

[www.mssystem.com](http://www.mssystem.com)

# **Table of Contents**

---

Introduction.....	1
Safety Information and Cautions .....	2
Explanation of Graphic Warning Symbols.....	2
General Wiring Cautions .....	2
Intercom Room Station Cautions .....	2
Important Safety Notes.....	3
Component Features .....	4
Installation.....	5
System Design .....	5
Structured Wiring Enclosure .....	5
Hub Mounting .....	5
Junction Box Installation .....	6
System Wiring.....	6
Station Installation.....	6
Hub Wiring .....	7
Optional Door Strike Installation .....	7
Optional Expansion Hub Installation.....	8
Optional Audio Input Wall Plate .....	8
Hub Options .....	9
Hub Power Supply Connection .....	9
Hub Status Indicators .....	9
General Operation .....	10
Intercom Features .....	10
Volume Control.....	10
Hands-free Reply .....	10
Quick Listen .....	10
Door to Room and Door to Patio Communications .....	11
Room to Room and Room to Patio Communications.....	12
Patio to Room and Patio to Patio Communications .....	13
Constant Modes.....	14
Privacy Mute Mode .....	14
Do-not-disturb Mode .....	14
Monitor Mode .....	15
Listen Mode.....	15
Troubleshooting .....	16
System Setup and Option Log .....	17
Intercom Accessories & Kits .....	18
Limited Warranty.....	19
FCC Notice .....	19

# Introduction

Linear's M&S Systems brand Model DMC-10 Structured Wiring Intercom System offers several advanced features never before available in an intercom system. Its distributed hub design provides easy installation and structured wiring mounting compatibility necessary for modern residential and light commercial applications.

The room, door, and patio stations showcase a new, contemporary design, crafted to blend smoothly into the installation's decor. Station faceplates are available in a variety of colors to further customize each installation. Room station keypads are illuminated with soft blue indicators while the intercom is in use. The door and patio station keys are illuminated with white lighting for easy nighttime operation.

The heart of the system is the Model DMC-10H Intercom Hub. The intercom hub grid mounts in a structured wiring enclosure. Up to eight room, door, and patio stations in any combination can be connected to the system hub using up to 500 feet of standard Cat-5 cable for each station. For larger installations, a second system hub can be added for expansion, providing a total system capacity of up to 16 stations. The Model DMC-10AWP Audio Input Wall Plate can be added to the system to connect an external audio source for distribution throughout the intercom system.

The room, patio, and door stations mount inside standard 2-gang junction boxes and are easy to install and wire. Each station and the system hub contains color-coded Type 110 punch-down terminal blocks for fast and reliable connection to Cat-5 cable. A 12-volt switching power supply is included with each intercom hub.

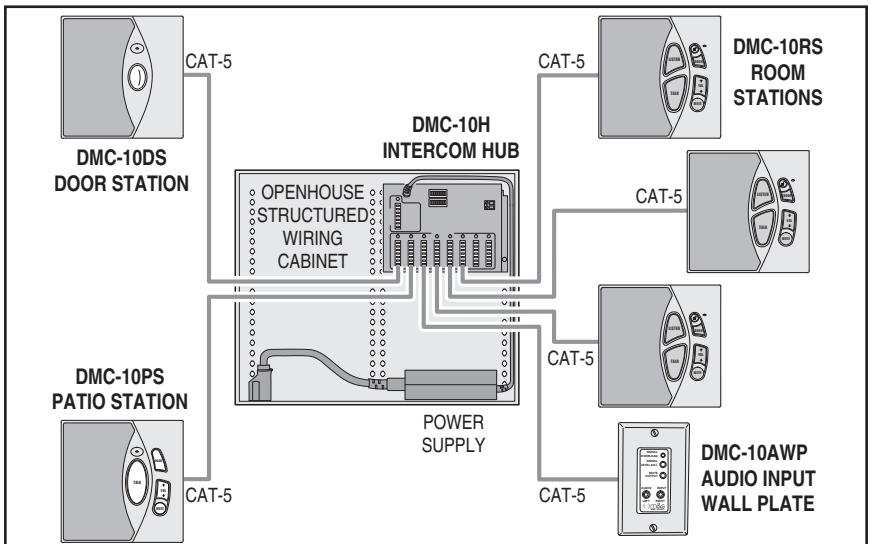


Figure 1. Typical DMC-10 Installation

# Safety Information and Cautions

## Explanation of Graphic Warning Symbols

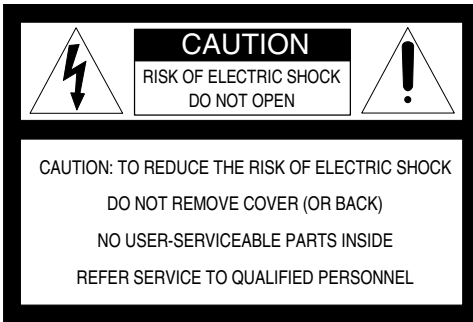


This symbol is intended to alert the user to the presence of un-insulated “dangerous voltage” within the product’s enclosure that may be of sufficient magnitude to constitute a risk of electric shock.



This symbol is intended to alert the user to the presence of important operating and maintenance (servicing) instructions in the literature accompanying the device.

**WARNING!** To prevent fire or shock hazard, do not expose this device to rain, water, or wet locations.



## General Wiring Cautions

- **DO NOT USE EXCESSIVE FORCE ON PUNCH-DOWN TERMINALS! IF USING AN IMPACT TYPE 110 PUNCH-DOWN TOOL, SET THE FORCE ADJUSTMENT TO “LOW” BEFORE TERMINATING CAT-5 CABLES.**
- The 120 VAC line to the structured wiring enclosure’s junction box must be run by a licensed electrician.
- Individual CAT-5 cable runs from the hub to any station or audio input wall plate should not exceed 500 feet.
- Label all cables for identification at the intercom hub.
- **DO NOT SPLICE CABLES!** Splices are unreliable and defeat the signal isolation properties of the cable.
- **DO NOT STAPLE CABLES!** Staples cause shorts.
- **DO NOT RUN 120 VAC ELECTRICAL WIRES INSIDE INTERCOM STATION JUNCTION BOXES.** If you encounter 120 VAC wires running through station junction boxes, you must have a qualified electrician rerun those wires around the junction box.
- **KEEP CABLES AT LEAST 18 INCHES FROM FLORESCENT LIGHT FIXTURES, DIMMER CONTROLS, AND ALL OTHER WIRING.** This includes AC wiring, security cable, cordless phone units, and other control wires. These can cause a “hum” or “buzzing” sound.
- Keep all cables away from objects such as heating and air conditioning ducts, metal construction plates, and anything else with sharp edges that can damage cables.

## Intercom Room Station Cautions

- **DO NOT** install room stations in saunas. They will not withstand the extreme heat or moisture.
- **DO NOT** install room stations within 10 feet of other room stations, in the same stud cavity as other room stations, or facing each other. This will cause acoustic feedback.

# Safety Information and Cautions (Continued)

## Important Safety Notes



**POWER SOURCE** This unit should only be connected to a 110-120 VAC power source as marked on the unit.



**GROUNDING OR POLARIZATION** Do not defeat the safety purpose of the polarized or grounding-type plug. A polarized plug has two blades with one wider than the other. A grounding type plug has two blades and a third grounding prong. The wide blade or the third prong are provided for your safety. If the provided plug does not fit into your outlet, consult an electrician for replacement of the obsolete outlet.



**NON-USE PERIODS** Always turn the unit off and unplug when it is not being used or left unattended for long periods of time.



**OBJECT AND LIQUID ENTRY** Never push objects of any kind into the unit through the cabinet slots as they may touch dangerous voltage points or short out parts that could result in a fire or electric shock. Never spill liquid of any kind on the unit.



**CLEANING** Unplug the unit from the wall outlet before cleaning or polishing it. Do not use liquid cleaners, aerosol cleaners, gasoline or other flammable fluid. Clean the exterior of the unit with a slightly damp cloth.



**WATER AND MOISTURE** Do not use power line operated units near water - for example, near a bathtub, washbowl, kitchen sink, or laundry tub, in a wet basement, or near a swimming pool.



**VENTILATION** The appliance should be situated so that its location or position does not interfere with its proper ventilation. For example, the unit should not be situated on a bed, sofa, rug or placed in a built-in installation that may block the flow of air through the ventilation openings.



**POWER CORD PROTECTION** Power supply cords should be routed so that they are not likely to be walked on or pinched by items placed upon or against them paying particular attention to cords at plugs, convenience receptacles, and the point where they exit from the appliance.



**READ INSTRUCTIONS** All the safety and operating instructions should be read before the product is operated.



**RETAIN INSTRUCTIONS** The safety and operating instructions should be retained for future reference.



**HEED WARNINGS** All warnings on the product and in the operating instructions should be adhered to.



**FOLLOW INSTRUCTIONS** All operating and use instructions should be followed.



**ATTACHMENTS** Do not use attachments not recommended by the product manufacturer as they may cause hazards.



**ACCESSORIES** Do not place this product on an unstable cart, stand, tripod, bracket, or table. The product may fall, causing serious injury to a child or adult, and serious damage to the product. Use only with a cart, stand, tripod, bracket or table recommended by the manufacturer, or sold with the product. Any mounting of the product should follow the manufacturer's instructions, and should use a mounting accessory recommended by the manufacturer.



**OVERLOADING** Do not overload wall outlets, extension cords, or integral convenience receptacles as this can result in a risk of fire or electric shock.



**REPLACEMENT PARTS** When replacement parts are required, be sure the service technician has used replacement parts specified by the manufacturer or have the same characteristics as the original part. Unauthorized substitutions may result in fire, electric shock, or other hazards.



**SAFETY CHECK** Upon completion of any service or repairs to this product, ask the service technician to perform safety checks to determine that the product is in proper operating condition.



**WALL OR CEILING MOUNTING** The product should be mounted to a wall or ceiling only as recommended by the manufacturer.



**HEAT** The product should be situated away from heat sources such as radiators, heat registers, stoves, or other products (including amplifiers) that produce heat.

# Component Features

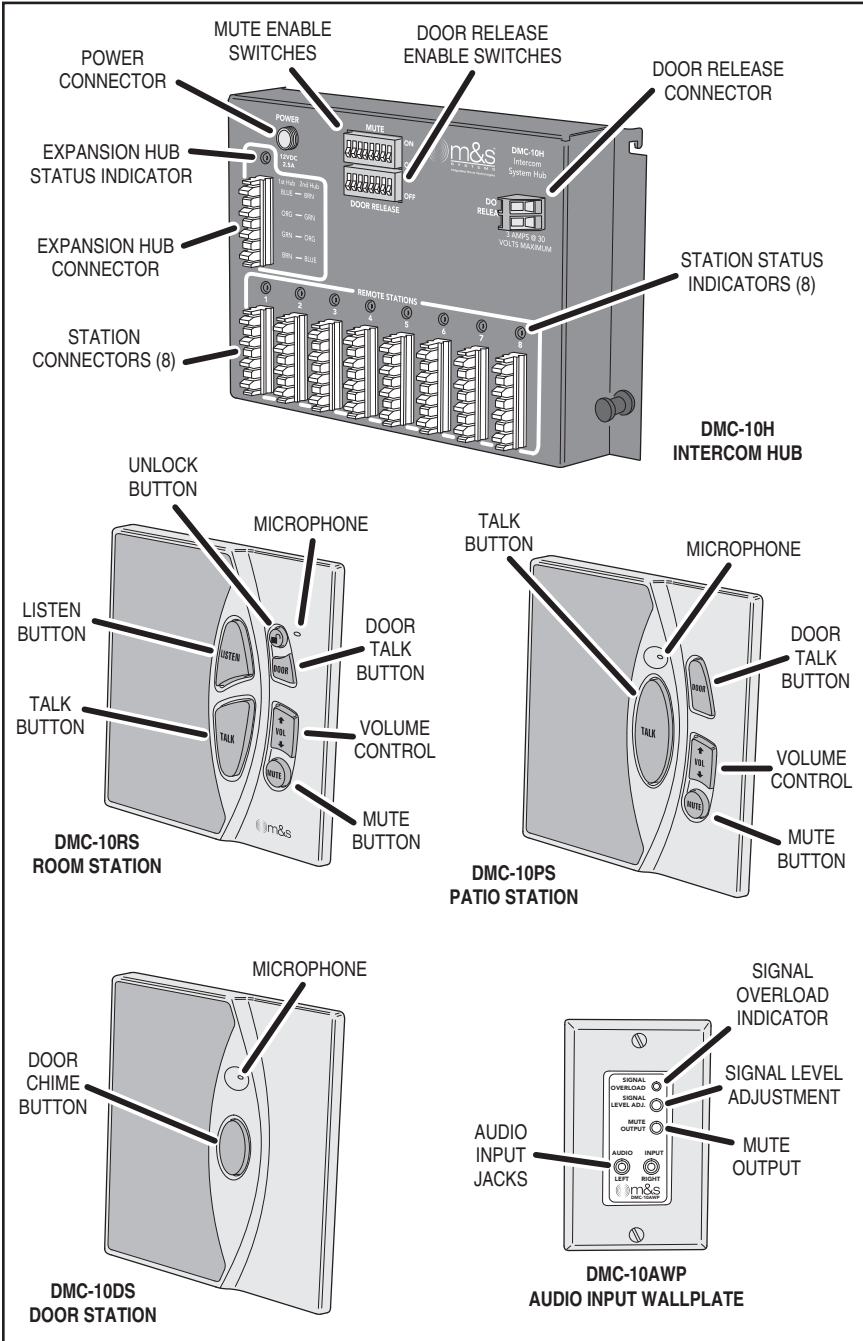


Figure 2. Station and Hub Features

# Installation

## System Design

Evaluate the installation to determine locations for mounting the intercom components. The intercom hub mounts in a new or existing structured wiring enclosure. The DMC-10RS room stations can be located in any rooms that require communications. DMC-10PS patio stations are weather resistant and designed to be mounted in protected areas outdoors. DMC-10DS door stations are also weather resistant and typically mounted next to the primary visitor entrance and any other auxiliary entrances. Up to eight stations of any type can be connected to one DMC-10H hub. An additional DMC-10H hub can be connected to the primary hub for expansion, increasing the system capacity to sixteen stations total.

## Structured Wiring Enclosure

Linear's OpenHouse brand Model H312KIT 12-inch high structured wiring enclosure is recommended for mounting the DMC-10H hub. Other OpenHouse enclosures can also be used to mount the hub. Enclosures mount recessed, between wall studs, or can be surface mounted. Be sure the enclosure is in a location where 117 VAC power can be routed to the enclosure **by a licensed electrical contractor** for connection to an outlet in the enclosure.

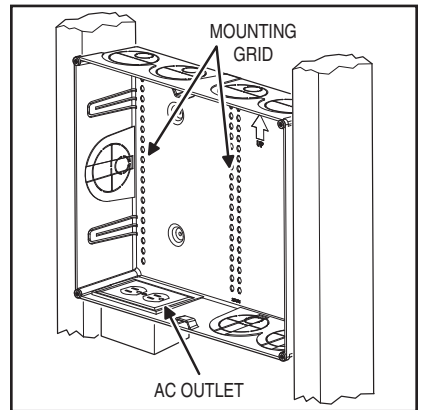


Figure 3. OpenHouse Model H312KIT Structured Wiring Enclosure

## Hub Mounting

The hub locks into the mounting grid of the structured wiring enclosure the same as other structured wiring modules (see Figure 4). Hook the mounting tabs into the grid, swing the hub into place, and push the locking button to finish the hub mounting.

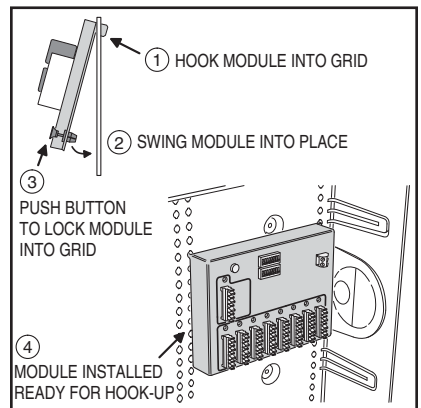


Figure 4. Hub Mounting in the Enclosure

## Installation (Continued)

### Junction Box Installation

Each intercom station mounts inside a standard 2-gang J-box. Mount the J-boxes flush with the drywall at locations and heights convenient for the installation.

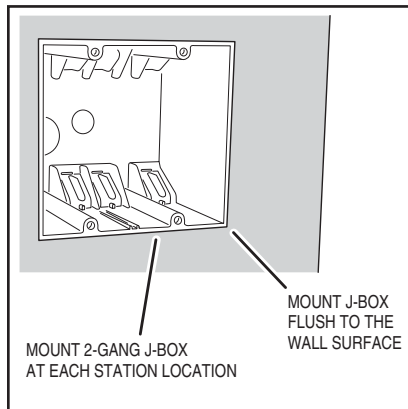


Figure 5. Junction Box Installation

### System Wiring

Route Cat-5 or Cat-5e cable from each station's J-box to the structured wiring enclosure where the hub will be mounted. Drill through studs and headers to accommodate cabling. Secure the cables with zip-tie straps (be careful not to puncture or pinch cables with staples). **Route all cables 18" away from AC wiring and lamp dimmers.** Route the cables from the stations into the enclosure through the wiring knockouts. Label each cable's station location at the enclosure end.

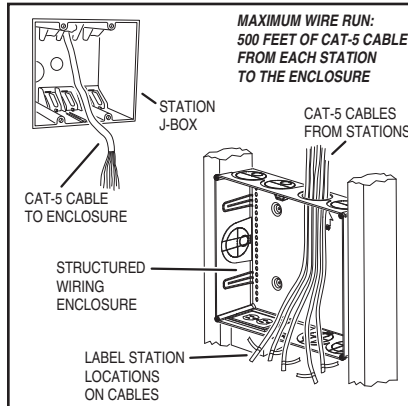


Figure 6. Pre-wiring Cat-5 Cable

### Station Installation

Remove the faceplate from the station by twisting a screwdriver in the slot under the lower left corner of the faceplate. Use a Type 110 punch-down tool (if using an impact tool, set the tool to "low" force!) to connect the Cat-5 cable's eight wires to the color coded connector on the back of each station. After wiring, install the station into the J-box, secure it with the four screws, and replace the faceplate. Note: Alternate color station faceplates are available (see Page 18).

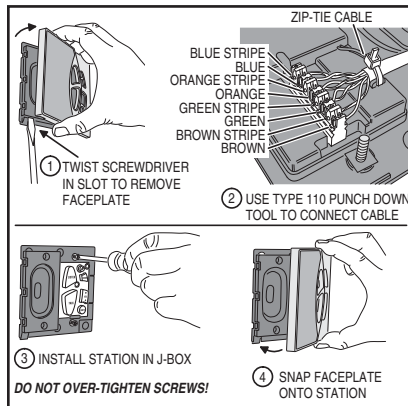


Figure 7. Station Installation



# Installation (Continued)

## Hub Wiring

Use a Type 110 punch-down tool (if using an impact tool, set the tool to "low" force!) to connect the Cat-5 cable from each station to the color coded connectors on the hub.

Wire the door station(s) first. The hub's station location number determines the sound of the door station's chime.

Hub station 1, 2, or 3 = ding-dong

Hub station 4, 5, or 6 = dong-dong

Hub station 7 or 8 = dong-ding

Wire the remaining stations to the hub connectors. To document the installation, note the station type and locations in the log on Page 17.

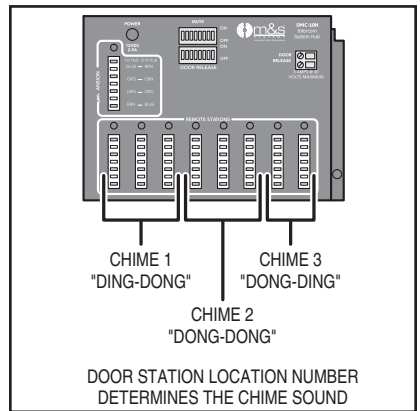


Figure 8. Door Station Chime Selection

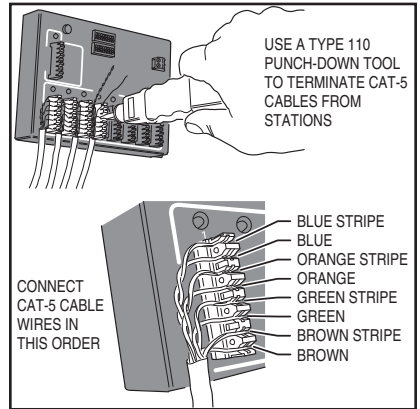



Figure 9. Hub Wiring

## Optional Door Strike Installation

The intercom hub features a normally open door release relay that can switch up to 3 amps @ 30 volts. The relay can be used to activate a Model DRW electric door strike. The relay is triggered by pressing the  button on any room station. Note: The unlock feature can be disabled on any room station using the option switches on the hub.

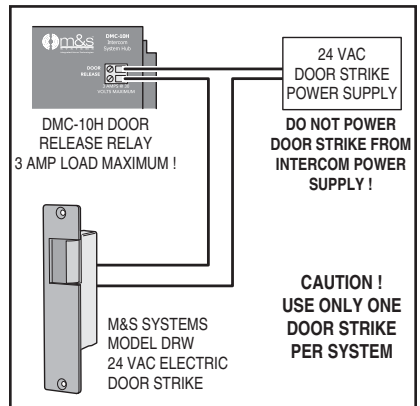


Figure 10. Electric Door Strike Wiring

## Installation (Continued)

### Optional Expansion Hub Installation

To increase the system's capacity, a second hub can be connected to the primary hub. The hubs connect to each other with up to 150 feet of Cat-5 cable. Each hub requires its own power supply.

Mount the second hub in the enclosure (or in another enclosure). Connect the primary hub to the second hub using the connectors labeled EXPANSION. **Note: Match the wire colors to the connector on the 1st hub, flip the wire pair order on the second hub (see Figure 11).**

Connect up to eight additional stations to the expansion hub. Wiring is the same as the primary hub.

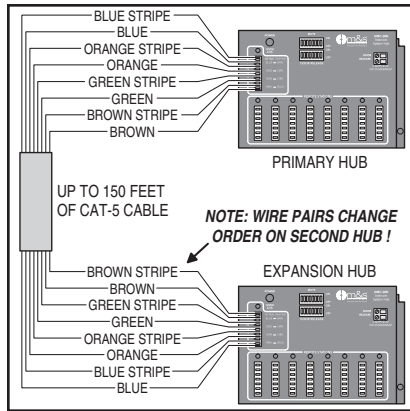


Figure 11. Expansion Hub Wiring

### Optional Audio Input Wall Plate

An external audio source can be connected to the system using the Model DMC-10AWP wall plate. The wall plate connects to one of the hub's station connectors in place of a station. Room and patio stations set to Listen Mode can play the audio source. The audio source will be automatically muted when the intercom is in use.

The audio input wall plate also features an input level control and a mute output. The mute output is a relay contact closure that can be used to silence an independent music system when the intercom is in use.

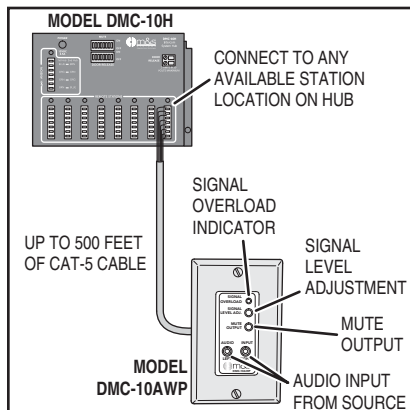



Figure 12. Audio Wall Plate Wiring

## Installation (Continued)

### Hub Options

The intercom hub has two banks of dipswitches. One bank enables or disables each door station's door release  button. The other bank enables or disables each door or patio station's privacy mute and do-not-disturb feature.

Select the options appropriate for the installation. The numbers on the dipswitches correspond to the hub's station numbers. Mark the switch settings in the log on Page 17.

### Hub Power Supply Connection

The switching power supply module included with each hub powers the hub and all stations connected to it. **If an expansion hub is used, it requires its own power supply.**

Place the power supply in the enclosure with the hub. Insert the power supply output plug into the hub's POWER jack. Insert the power supply's power cord into the 117 VAC outlet installed in the enclosure.

### Hub Status Indicators

When the hub powers up, a diagnostic check is run for all the stations connected. On the hub, the green indicator above the station's connector will light and stay lit for all stations that pass the diagnostic check (also for the optional expansion hub). If any hub indicators do not light, check the wiring associated with that connector.

**The diagnostic check only occurs when power is applied to the hub.** To perform the diagnostic check at any time, cycle the hub power off then on again.

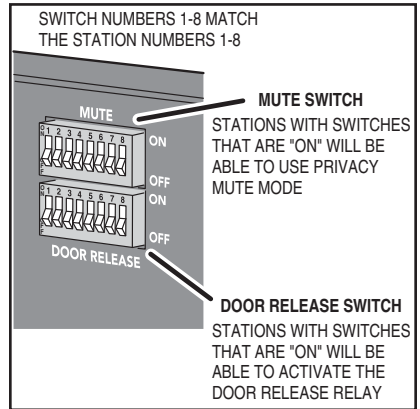


Figure 13. Hub Option Switches

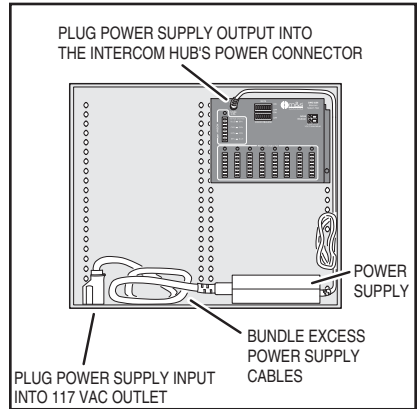


Figure 14. Power Supply Connections

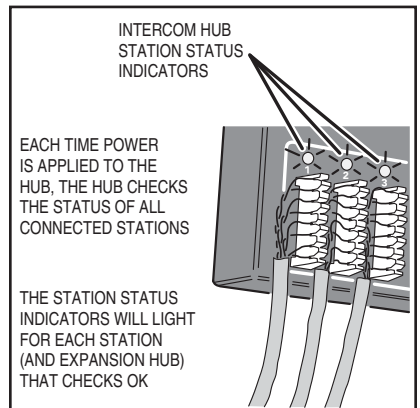


Figure 15. Hub Status Indicators

# General Operation

## Intercom Features

Each room and patio station can be used for communication with other room, patio, or door stations. Also, room and patio stations feature four special constant modes for room monitoring and privacy.

If the optional audio input wall plate is installed, room and patio stations can be set to play to the audio source connected to the wall plate.

## Volume Control

Volume at each station can be set with its **VOL** button. Each momentary **VOL↑** press increases, or **VOL↓** press decreases, the station's volume. Pressing and holding the **VOL↓** button for one second will silence the station's speaker. When the station's volume is set all the way down, the **VOL** button will remain dimly lit. Pressing and holding the **VOL↑** button for one second returns the volume to its previous level.

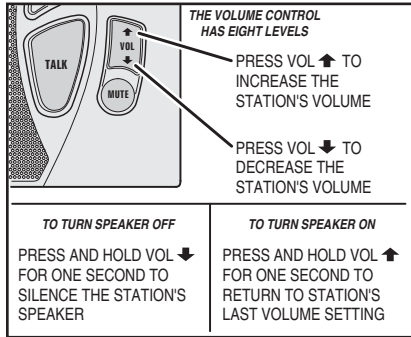


Figure 16. Volume Control

## Hands-free Reply

Room stations will automatically listen to all other room and patio stations for 25 seconds after the room station's **TALK** button is released (except for stations in privacy mute or Do-not-disturb Mode). This allows for a "hands-free" reply from the person being called. This also applies when communicating with door stations using the room or patio station's **DOOR** button.

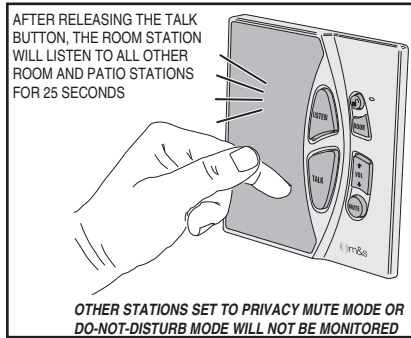


Figure 17. Hands-free Reply

## Quick Listen

To momentarily listen to all of the room and patio stations without making a call, press and hold the room station's **LISTEN** button. This mode **WILL NOT** listen to stations in Privacy Mute Mode or Do-not-disturb Mode.

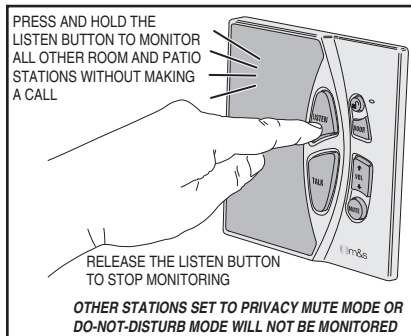


Figure 18. Quick Listen

## General Operation (Continued)

### Door to Room and Door to Patio Communications

When visitors arrive, they push a door station button to announce their arrival. Pressing the door station's button sounds a chime on all stations (unless the station is set to Do-not-disturb Mode).

#### Door Button

To communicate with the visitor at the door station, press and hold the room or patio station's **DOOR** button while speaking. Release the **DOOR** button to listen to the visitor for 25 seconds. Press and hold the **DOOR** button again at any time to continue talking to the visitor, each time the **DOOR** button is released, the listening time will be extended another 25 seconds.

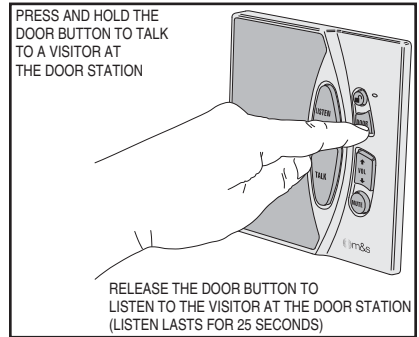




Figure 19. Door Button

#### Unlock Button

If a door release has been installed, pressing the  button on a room station will activate the door release for four seconds (if the door release feature is enabled for the station on the hub). The door release will stay activated as long as the  button is held down.

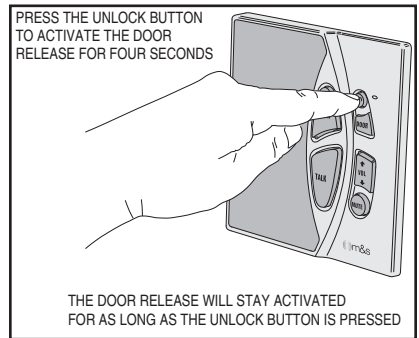


Figure 20. Unlock Button

#### Mute Button

The communication session can be canceled at any time before the 25 second listening period expires by pressing the **MUTE** button.

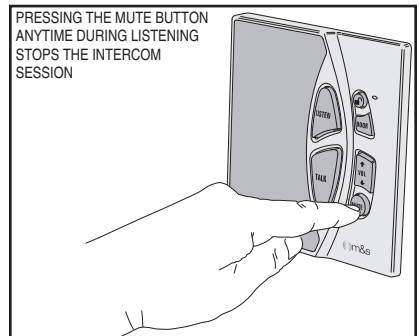


Figure 21. Mute Button

## General Operation (Continued)

### Room to Room and Room to Patio Communications

A typical use for the system is to communicate between room stations throughout the installation and to patio stations.

#### Talk Button

To communicate with other people at room or patio stations, press and hold the room station's **TALK** button while speaking. Release the **TALK** button to listen to all other room and patio stations for 25 seconds (except stations in Privacy Mute or Do-not-disturb Modes). Press and hold the **TALK** button again at any time to continue talking, after the **TALK** button is released, the listening time will be extended another 25 seconds.

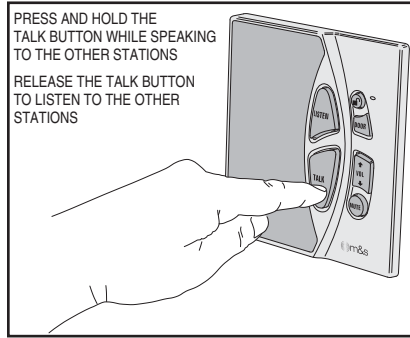


Figure 22. Room Station Talk Button

#### Hands-free Reply Direction

Either person can change the direction of the hands-free conversation by pressing and holding their **TALK** button while speaking. After any **TALK** button is released the other person will be able to reply hands-free during the 25 second listening period (except after a **TALK** button has been pressed on a patio station).

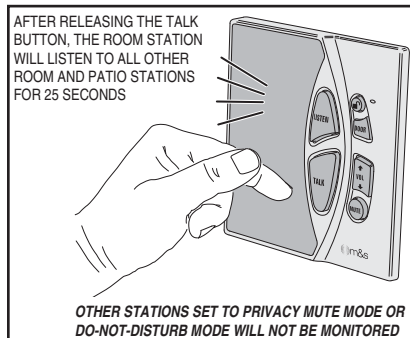


Figure 23. Hands-free Reply

#### Mute Button

To cancel the communication session at any time before the 25 second listening period expires, press the **MUTE** button.

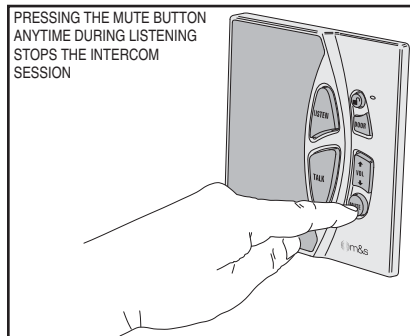


Figure 24. Room Station Mute Button

## General Operation (Continued)

### Patio to Room and Patio to Patio Communications

A person at the patio station can make a call to the room stations, or another patio station. For security and privacy, the patio station will not trigger hands-free reply from room or other patio stations.

#### Talk Button

To communicate with people inside, press and hold the patio station's **TALK** button while speaking. Release the **TALK** button and wait for a reply from the inside stations. Press and hold the **TALK** button again at any time to repeat the call if it was unanswered.

To ensure privacy, releasing the patio station's **TALK** button WILL NOT cause automatic listening to the room stations for 25 seconds. The person at a room station (or another patio station) must always press **TALK** to respond to a patio station. When the room station's **TALK** button is released, the room station will listen to the patio station and all other stations for 25 seconds (except stations in Privacy Mute or Do-not-disturb Mode). Each time the room station's **TALK** button is released, the listening time will be extended another 25 seconds.

#### Mute Button

To cancel the communication session at any time before the 25 second listening period expires, press the **MUTE** button.

**NOTE:** To prevent neighbors from hearing private inside intercom conversations, reduce the patio station's volume when it is not in use.

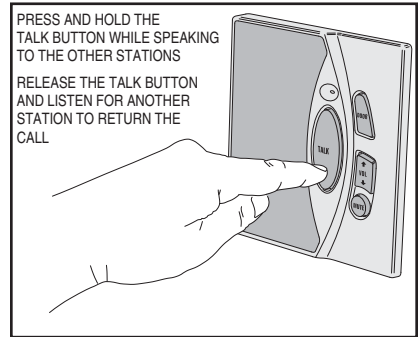


Figure 25. Patio Station Talk Button

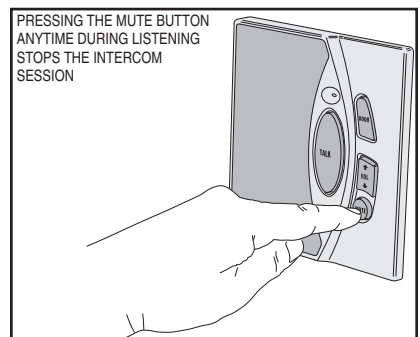


Figure 26. Patio Station Mute Button

# Constant Modes

Four special constant modes are available for room stations and patio stations. Each room and patio station can be set to one of the four modes. **Constant modes remain in effect, even after the intercom is used for other functions.** The constant modes can be used to (1) prevent monitoring from other stations; (2) prevent monitoring and calling from other stations; (3) monitor sounds in other rooms or audio from an external source; or (4) select specific room stations or patio stations for constant monitoring.

## Privacy Mute Mode

For privacy, room and patio stations can be set to prevent monitoring from other stations (if the mute feature is enabled for the station on the hub).

To enter or exit Privacy Mute Mode, momentarily press the station's **MUTE** button. In Privacy Mute Mode the station's **MUTE** button lights.

The station can still perform regular intercom communications while in Privacy Mute Mode.

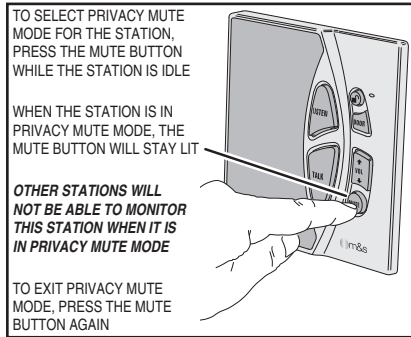


Figure 27. Privacy Mute Mode

## Do-not-disturb Mode

For privacy and silence, room and patio stations can be set to prevent monitoring and calling from other stations (if the mute feature is enabled for the station on the hub).

To select Do-not-disturb Mode, press and hold the station's **MUTE** button for two seconds. In Do-not-disturb Mode the station's **MUTE** and **VOL** buttons light. To exit Do-not-disturb Mode, press the **MUTE** button.

The station can still perform regular intercom communications **if the call is made from the station in Do-not-Disturb Mode.**

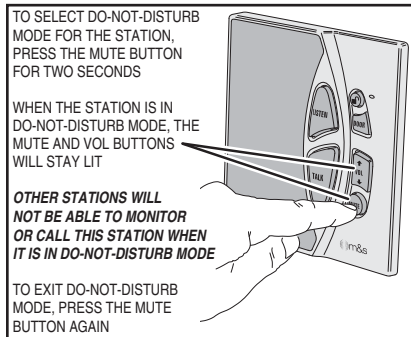


Figure 28. Do-not-disturb Mode



## Constant Modes (Continued)

### Monitor Mode

Monitor Mode is typically used for monitoring a baby or other sounds in a room. When a room or patio station is set to Monitor Mode, the station's microphone is always on. Set other stations to Listen Mode (see below) to hear sounds from any station(s) set to Monitor Mode.

To enter or exit Monitor Mode, press the station's **MUTE** and **TALK** buttons together. In Monitor Mode, the station's **TALK** button lights.

The station can still perform regular intercom communications while in Monitor Mode.

### Listen Mode

When a room or patio station is set to Listen Mode, the station's speaker is always on. Set a station to Listen Mode to hear all stations set to Monitor Mode.

Also, if the optional audio input wall plate has been installed, set a station to Listen Mode to play the audio source connected to the wall plate.

To enter or exit Listen Mode, press the station's **MUTE** and **LISTEN** buttons together. In Listen Mode, the station's **LISTEN** button lights.

The station can still perform regular intercom communications while in Listen Mode.

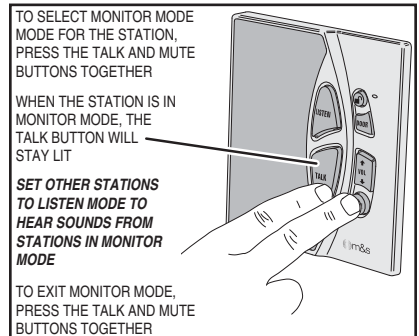


Figure 30. Monitor Mode

**NOTE:** For silent, uninterrupted monitoring at the room station in Monitor Mode, set the station's volume all the way down.

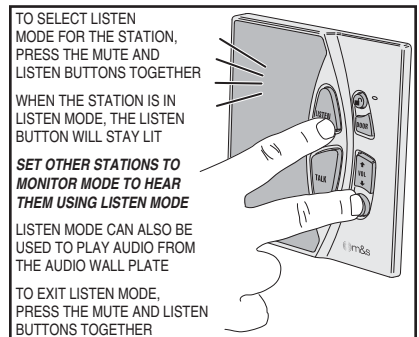


Figure 29. Listen Mode

**NOTE:** On Patio stations, press **MUTE** and **VOL**↑ to enter or exit Listen Mode.

## Troubleshooting

SYMPTOM	CAUSE	SOLUTION
No hub status indicators lit	No power to hub	Check power supply input & output voltage
Hub station status indicator not lit on an installed station	Wiring error	Check Cat-5 wiring, redo wiring if necessary
Expansion hub status indicator not lit (with expansion hub installed)	Wiring error or no power to expansion hub	Check Cat-5 wiring to expansion hub, redo wiring if necessary, check expansion hub power supply
Hum or buzz in audio	Electrical interference	Check for station Cat-5 wiring near AC power wires or near lamp dimmers
Door station sounds wrong chime	Door station wired to wrong hub connector	Wire door station to a different hub connector for the correct chime
Stations came out of constant modes	Power interruption at hub	Reset stations into constant modes
Station will not go into Privacy Mute Mode	Hub mute dipswitch for station set to OFF	Set hub mute dipswitch for station to ON
Station will not go into Do-not-disturb Mode	Hub mute dipswitch for station set to OFF	Set hub mute dipswitch for station to ON
Station will not activate door release	Hub door release dipswitch for station set to OFF	Set hub door release dipswitch for station to ON
Cannot monitor a station in Listen Mode	Station to monitor set to Privacy Mute Mode or Do-not-disturb Mode	Take station out of Privacy Mute Mode or Do-not-disturb Mode by pressing <b>MUTE</b>
Low or no intercom volume	Station's volume control set low or off	Reset station's volume control

# System Setup and Option Log

STATION NUMBER	TYPE	LOCATION	DIPSWITCH OPTIONS
1	<input type="checkbox"/> ROOM STATION <input type="checkbox"/> PATIO STATION <input type="checkbox"/> DOOR STATION		MUTE <input type="checkbox"/> OFF <input type="checkbox"/> ON DOOR RELEASE <input type="checkbox"/> OFF <input type="checkbox"/> ON
2	<input type="checkbox"/> ROOM STATION <input type="checkbox"/> PATIO STATION <input type="checkbox"/> DOOR STATION		MUTE <input type="checkbox"/> OFF <input type="checkbox"/> ON DOOR RELEASE <input type="checkbox"/> OFF <input type="checkbox"/> ON
3	<input type="checkbox"/> ROOM STATION <input type="checkbox"/> PATIO STATION <input type="checkbox"/> DOOR STATION		MUTE <input type="checkbox"/> OFF <input type="checkbox"/> ON DOOR RELEASE <input type="checkbox"/> OFF <input type="checkbox"/> ON
4	<input type="checkbox"/> ROOM STATION <input type="checkbox"/> PATIO STATION <input type="checkbox"/> DOOR STATION		MUTE <input type="checkbox"/> OFF <input type="checkbox"/> ON DOOR RELEASE <input type="checkbox"/> OFF <input type="checkbox"/> ON
5	<input type="checkbox"/> ROOM STATION <input type="checkbox"/> PATIO STATION <input type="checkbox"/> DOOR STATION		MUTE <input type="checkbox"/> OFF <input type="checkbox"/> ON DOOR RELEASE <input type="checkbox"/> OFF <input type="checkbox"/> ON
6	<input type="checkbox"/> ROOM STATION <input type="checkbox"/> PATIO STATION <input type="checkbox"/> DOOR STATION		MUTE <input type="checkbox"/> OFF <input type="checkbox"/> ON DOOR RELEASE <input type="checkbox"/> OFF <input type="checkbox"/> ON
7	<input type="checkbox"/> ROOM STATION <input type="checkbox"/> PATIO STATION <input type="checkbox"/> DOOR STATION		MUTE <input type="checkbox"/> OFF <input type="checkbox"/> ON DOOR RELEASE <input type="checkbox"/> OFF <input type="checkbox"/> ON
8	<input type="checkbox"/> ROOM STATION <input type="checkbox"/> PATIO STATION <input type="checkbox"/> DOOR STATION		MUTE <input type="checkbox"/> OFF <input type="checkbox"/> ON DOOR RELEASE <input type="checkbox"/> OFF <input type="checkbox"/> ON
Expansion 1	<input type="checkbox"/> ROOM STATION <input type="checkbox"/> PATIO STATION <input type="checkbox"/> DOOR STATION		MUTE <input type="checkbox"/> OFF <input type="checkbox"/> ON DOOR RELEASE <input type="checkbox"/> OFF <input type="checkbox"/> ON
Expansion 2	<input type="checkbox"/> ROOM STATION <input type="checkbox"/> PATIO STATION <input type="checkbox"/> DOOR STATION		MUTE <input type="checkbox"/> OFF <input type="checkbox"/> ON DOOR RELEASE <input type="checkbox"/> OFF <input type="checkbox"/> ON
Expansion 3	<input type="checkbox"/> ROOM STATION <input type="checkbox"/> PATIO STATION <input type="checkbox"/> DOOR STATION		MUTE <input type="checkbox"/> OFF <input type="checkbox"/> ON DOOR RELEASE <input type="checkbox"/> OFF <input type="checkbox"/> ON
Expansion 4	<input type="checkbox"/> ROOM STATION <input type="checkbox"/> PATIO STATION <input type="checkbox"/> DOOR STATION		MUTE <input type="checkbox"/> OFF <input type="checkbox"/> ON DOOR RELEASE <input type="checkbox"/> OFF <input type="checkbox"/> ON
Expansion 5	<input type="checkbox"/> ROOM STATION <input type="checkbox"/> PATIO STATION <input type="checkbox"/> DOOR STATION		MUTE <input type="checkbox"/> OFF <input type="checkbox"/> ON DOOR RELEASE <input type="checkbox"/> OFF <input type="checkbox"/> ON
Expansion 6	<input type="checkbox"/> ROOM STATION <input type="checkbox"/> PATIO STATION <input type="checkbox"/> DOOR STATION		MUTE <input type="checkbox"/> OFF <input type="checkbox"/> ON DOOR RELEASE <input type="checkbox"/> OFF <input type="checkbox"/> ON
Expansion 7	<input type="checkbox"/> ROOM STATION <input type="checkbox"/> PATIO STATION <input type="checkbox"/> DOOR STATION		MUTE <input type="checkbox"/> OFF <input type="checkbox"/> ON DOOR RELEASE <input type="checkbox"/> OFF <input type="checkbox"/> ON
Expansion 8	<input type="checkbox"/> ROOM STATION <input type="checkbox"/> PATIO STATION <input type="checkbox"/> DOOR STATION		MUTE <input type="checkbox"/> OFF <input type="checkbox"/> ON DOOR RELEASE <input type="checkbox"/> OFF <input type="checkbox"/> ON

# **Intercom Accessories & Kits**

---

## **DMC-10 Intercom Kits**

### **Model DMC-10Kit**

Contains four room stations with white faceplates, one door station with white faceplate, one system hub and power supply

### **Model H312KIT**

Contains one OpenHouse brand structured wire enclosure and cover

## **DMC-10 Intercom Accessories**

### **Model DMC-10AWP**

Contains one audio input wall plate

### **Model DMC-10H**

Contains one intercom system hub and power supply

### **Model DMC-10RS**

Contains one room station with white faceplate

### **Model DMC-10PS**

Contains one patio station with white faceplate

### **Model DMC-10DS**

Contains one door station with white faceplate

## **DMC-10 Custom Station Faceplates**

### **Model DMC-10RFW-4**

Contains four white room station faceplates

### **Model DMC-10RFB-4**

Contains four black room station faceplates

### **Model DMC-10RFA-4**

Contains four almond room station faceplates

### **Model DMC-10PFW-4**

Contains four white patio station faceplates

### **Model DMC-10PFBB-4**

Contains four bright brass patio station faceplates

### **Model DMC-10PFAB-4**

Contains four antique brass patio station faceplates

### **Model DMC-10PFSN-4**

Contains four satin nickel patio station faceplates

### **Model DMC-10DFW-4**

Contains four white door station faceplates

### **Model DMC-10DFBB-4**

Contains four bright brass door station faceplates

### **Model DMC-10DFAB-4**

Contains four antique brass door station faceplates

### **Model DMC-10DFSN-4**

Contains four satin nickel door station faceplates

## ***Limited Warranty***

---

Linear LLC warrants its M&S Systems brand products to be free of defects for 2 years. The warranty period begins on either (a) the date of purchase or installation date of this product, or (b) the date of closing on a new residence in which this product was originally installed.

The warranty extends to the original user of the product and to each subsequent owner of the product during the term of the warranty. Linear will repair or replace, at its option, parts and materials at no charge. Parts supplied under this warranty may be new or rebuilt at the option of Linear.

If, during the warranty period, the product appears to have a defect, please call our toll free number (800-421-1587) prior to dismantling. Dismantling the product prior to calling our service number may void the warranty. Before returning any product to Linear, obtain a Return Product Authorization (RPA) number from our service department. Linear will return the repaired product freight prepaid within the continental United States. ANY PRODUCT RETURNED TO LINEAR WITHOUT AN RPA NUMBER WILL BE REFUSED.

This limited warranty is in lieu of any other warranties, express or implied, including any implied warranty of merchantability or fitness for a particular purpose or otherwise, and of any other obligations or liability on the seller's part. This limited warranty does not cover damage caused by improper installation, acts of God, criminal acts, the violation of applicable building or electrical codes or the use of non-M&S wire or cable (excluding CAT-5 and RG-6).

Under no circumstances shall Linear be liable for consequential, incidental or special damages arising in connection with use, or inability to use this product. In no event shall Linear's liability hereunder exceed the cost of the product covered hereby. No person is authorized to assume for us or obligate us for any other liability in connection with the sale of this product. Some states do not allow the exclusion or limitation of consequential, incidental or special damages, so the above limitation or exclusion may not apply to you. This limited warranty gives you specific legal rights, and you may also have other rights, which vary from state to state.

### **FCC Notice**

This device complies with part 15 of the FCC Rules. Operation is subject to the following two conditions: (1) This device may not cause harmful interference, and (2) this device must accept any interference received, including interference that may cause undesired operation.

