

QVS2GPTOS332

ALTER METALYTE

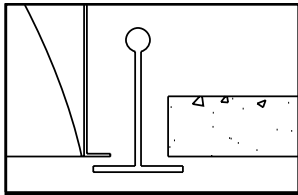
2' X 4' RECESSED DIRECT/INDIRECT FLUORESCENT
3 LAMP, T8, 5 1/2" DEEP
MICROPERFORATED MESH LAMP SHIELD
STATIC

- Efficiency 40%.
- Semi-specular aluminum reflectors with lengthwise ridges.
- Swing down microperforated lamp shield for easy relamping and maintenance.
- Alter soft white film on inside of mesh conceals lamp image and provide balance between reflected light and direct light.
- Fully recessed luminaire and lamp compartment.
- Specular interior reflector.
- One piece body for easy installation.
- Easy access to ballast through lamp compartment.
- Fits standard T-Grid ceilings.
- Optional acrylic drop-down visual element.

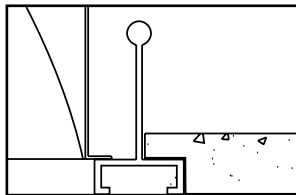


MOUNTING METHODS/FEATURES

Ceiling compatibility

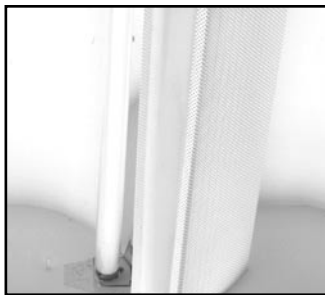


Suited to standard exposed T-grid ceilings

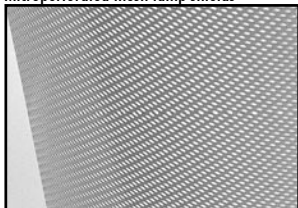


Suited to standard exposed Slot T-grid ceilings

Swing down optical system for easy relamping and maintenance



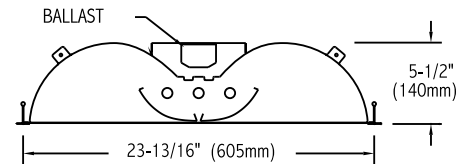
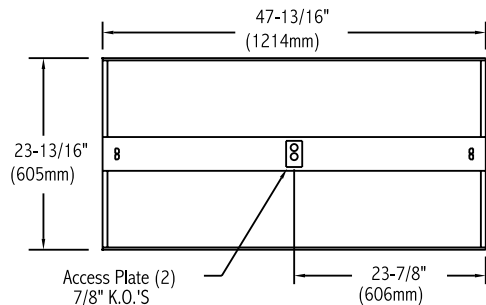
Microperforated mesh lamp shields



Semi-specular aluminum reflector with lengthwise ridges



DIMENSIONS



FIXTURE TYPE

VOLTS

JOB INFORMATION:	

LIGHTOLIER
Genlyte Thomas Company

QVS2GPTOS332

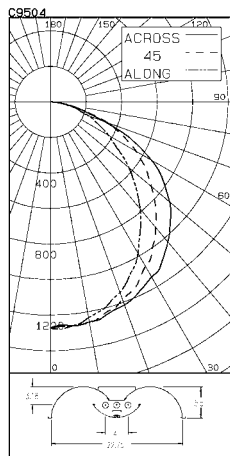
ALTER METALYTE 2' X 4' RECESSED DIRECT/INDIRECT FLUORESCENT

CERTIFIED TEST REPORT NO. LSC9504
COMPUTED BY LSC PROGRAM **TEST-LITE**

LIGHTOLIER-CFI ALTER 2x4 RECESSED FIXTURE CAT. NO. QVS2GPTOS33212003
WITH ALUMINUM RIBBED REFLECTOR AND OPEN SLOT MICRO PERFORATED DOOR
THREE 32W T8 FLUORESCENT LAMPS. LUMEN RATING = 2950 LMS.
ONE ADVANCE TRANSFORMER 120V 2 OR 3-LAMP ELECTRONIC BALLAST NO. REL-3P32-SC

LIGHTING SCIENCES CANADA LTD.
440 PHILLIP ST., UNIT 19
WATERLOO, ONTARIO

CERTIFIED TEST REPORT NO. LSC9504
COMPUTED BY LSC PROGRAM **TEST-LITE**



ANGLE	ALONG	45	67.5	ACROSS	OUTPUT LUMENS
0	1273	1273	1273	1273	1273
5	1266	1267	1271	1266	1263
10	1233	1250	1263	1253	1258
15	1197	1205	1222	1234	1236
20	1142	1157	1182	1203	1216
25	1065	1086	1143	1174	1180
30	984	1010	1068	1120	1138
35	881	930	1000	1082	1094
40	785	833	921	1007	1028
45	680	728	836	929	952
50	576	627	742	849	875
55	462	542	657	750	774
60	376	443	556	634	655
65	292	352	448	494	505
70	226	278	336	341	321
75	156	193	193	178	193
80	92	104	93	116	106
85	44	47	41	43	35
90	0	5	5	4	2

ZONAL LUMENS AND PERCENTAGES

ZONE	LUMENS	% LAMP	% LUMINAIRE
0-30	955	11.14	28.27
0-40	1608	18.18	46.14
0-60	2816	31.83	80.80
0-90	3486	39.39	100.00
40-90	1877	21.22	53.86
60-90	669	7.56	19.20
90-180	0	.00	.00
0-180	3486	39.39	100.00

** EFFICIENCY = 39.4% **

LUMINANCE SUMMARY-CD. / SQ. M.

ANGLE	ALONG	45	ACROSS	S/MH = 1.3
45	1393	1720	1959	SC (ALONG) = 1.2, SC (ACROSS) = 1.3
55	1166	1666	1963	CERTIFIED BY:
65	1000	1543	1739	DATE:
75	875	1081	1084	NOV 5, 2002
85	724	676	581	PREPARED FOR:
				LIGHTOLIER-CFI
				CORNWALL, ONTARIO

TESTED ACCORDING TO IES PROCEDURES. TEST DISTANCE EXCEEDS FIVE TIMES THE GREATEST LUMINOUS OPENING OF LUMINAIRE.

LIGHTOLIER-CFI ALTER 2x4 RECESSED FIXTURE CAT. NO. QVS2GPTOS33212003
WITH ALUMINUM RIBBED REFLECTOR AND OPEN SLOT MICRO PERFORATED DOOR
THREE 32W T8 FLUORESCENT LAMPS. LUMEN RATING = 2950 LMS.
ONE ADVANCE TRANSFORMER 120V 2 OR 3-LAMP ELECTRONIC BALLAST NO. REL-3P32-SC

COEFFICIENTS OF UTILIZATION

ZONAL CAVITY METHOD

EFFECTIVE FLOOR CAVITY REFLECTANCE = .20

CC WALL	80				70				50				30				10				0
RCR	70	50	30	10	70	50	30	10	50	30	10	50	30	10	50	30	10	50	30	10	0
0	.47	.47	.47	.47	.46	.46	.46	.46	.44	.44	.44	.42	.42	.42	.40	.40	.40	.39			
1	.43	.42	.40	.39	.42	.41	.39	.38	.39	.38	.37	.37	.37	.36	.36	.35	.35	.34			
2	.40	.37	.34	.32	.39	.36	.34	.32	.35	.33	.31	.33	.32	.30	.32	.31	.30	.29			
3	.36	.33	.30	.27	.35	.32	.29	.27	.31	.28	.27	.30	.28	.26	.29	.27	.26	.25			
4	.33	.29	.26	.23	.33	.29	.26	.23	.28	.25	.23	.27	.24	.23	.26	.24	.22	.21			
5	.31	.26	.22	.20	.30	.25	.22	.20	.24	.22	.19	.24	.21	.19	.23	.21	.19	.18			
6	.28	.23	.20	.17	.27	.23	.19	.17	.22	.19	.17	.21	.19	.17	.21	.18	.17	.16			
7	.26	.21	.17	.15	.25	.20	.17	.15	.20	.17	.15	.19	.17	.15	.19	.16	.14	.14			
8	.24	.19	.15	.13	.23	.18	.15	.13	.18	.15	.13	.17	.15	.13	.17	.14	.13	.12			
9	.22	.17	.13	.11	.21	.16	.13	.11	.16	.13	.11	.16	.13	.11	.15	.13	.11	.10			
10	.20	.15	.12	.10	.20	.15	.12	.10	.15	.12	.10	.14	.12	.10	.14	.11	.10	.09			

DETERMINED IN ACCORDANCE WITH CURRENT IES PUBLISHED PROCEDURES
LUMINAIRE INPUT WATTS = 80.4
LABORATORY RESULT MAY NOT BE REPRESENTATIVE OF FIELD PERFORMANCE.
BALLAST FACTORS HAVE NOT BEEN APPLIED.

ORDERING INFORMATION Explanation of Catalogue Number Example: QVS2GPTOS33212003

QVS	2	G	PT	OS	3	32	120	03	
QUALITY VISUAL STATIC Recessed direct indirect soft light optical system	FIXTURE WIDTH 2'	CEILING TYPE Standard exposed T-grid ceilings	LAMP SHIELD PT= Semi-specular matte reflector / Microperforated mesh lamp shield	CLEAR POLISHED ACRYLIC DROP DOWN VISUAL ELEMENT OS = Open slot (no acrylic) OP = One Piece (no center slot) GC = Clear acrylic GG = Clear acrylic / Green projected color face GB = Clear acrylic / Blue projected color face GR = Clear acrylic / Red projected color face	LAMP QUANTITY	LAMP/FIXTURE LENGTH (NOMINAL 48") 32 = 32W T8	VOLTAGE 120,277 347	OPTIONS R = Radio Interface Filter O = Emergency Lighting System (for Canada) N = Emergency Lighting System (for U.S.)	
								BALLAST SO: 1 or 2 LPB T8 Elect. 03: 3LPB T8 Elect. PS: T8 PowerSpec HDF Dimming † DA: iGEN DALI †	

† Not available in 347V.

SPECIFICATIONS

MATERIALS: One piece chassis constructed from die formed 20 gauge cold rolled steel. **Optic** - Semi-specular matte aluminum reflector with lengthwise ridges. Soft white acrylic film on inside of lamp shield conceals lamp image.
FINISH: Chassis exterior - phosphate undercoating, baked white acrylic matte high reflectance paint finish.

ELECTRICAL: Rapid start HPF, thermally protected class "P" ballast. If K.O.s are within 3" of ballast use wire suitable for at least 90C.
LABELS: Listed by CSA, UL

We reserve the right to change, materials and finish in any way that will not alter installed appearance or reduce function and performance.

Genlyte Thomas Company

631 Airport Road, Fall River, MA 02720 - Tel. (508) 679-8131
C.F.I. Division of Canlyte, Inc.
525 Education Road, Cornwall, Ontario
Canada K6H 6C7 - (613) 938-6221