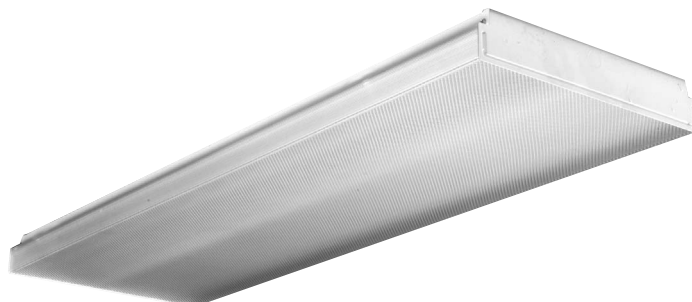
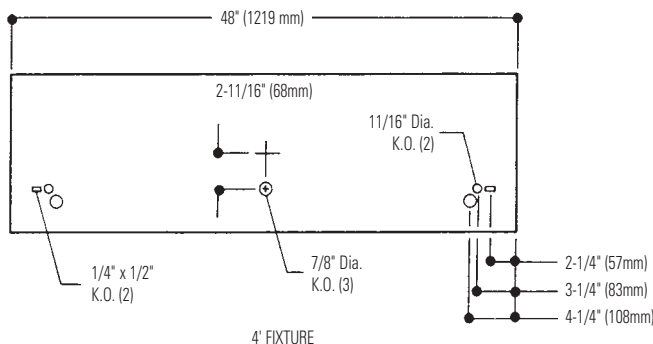
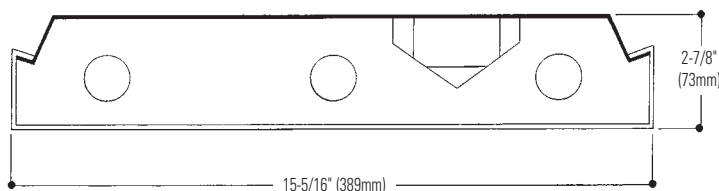


Features

- Excellent for locations where vandal resistance is required.
- Prismatic lens is 50% DR (impact resistant), and 50% standard acrylic with a nominal thickness of 1/8", withstands 70 ft. lbs. impact without breaking.
- Tamper resistant holt head screws secure lens to housing.
- UL-Listed for direct mounting on low density ceilings and damp locations.
- Steel end caps, standard.
- Self-aligning for continuous row mounting.
- Heavy duty, die formed channel of code gauge steel.



DIMENSIONS



Job Information	Type:
Job Name:	
Cat. No.:	
Lamp(s):	
Volts/Ballast:	

Lightolier a Genlyte Thomas Company www.lightolier.com
 Technical Information: (978) 657-7600 • Fax (978) 658-0595
 631 Airport Road, Fall River, MA 02720 • (508) 679-8131 • Fax (508) 674-4710
 We reserve the right to change details of design, materials and finish.
 © 2002 Genlyte Thomas Group LLC (Lightolier Division)
 A0902 **Section 6A/Folio P20-61**



GUARDSMAN GV4WB332

VANDAL RESISTANT WRAPAROUND, 15-5/16" WIDE, 4' LENGTH SURFACE FLUORESCENT 3 LAMP, T8 OR T12

Model No. GV4WB33212003

LER = FW - 75 IW = 86 BF = 0.93
Comparative yearly lighting energy cost per 1000 lumens = \$3.20

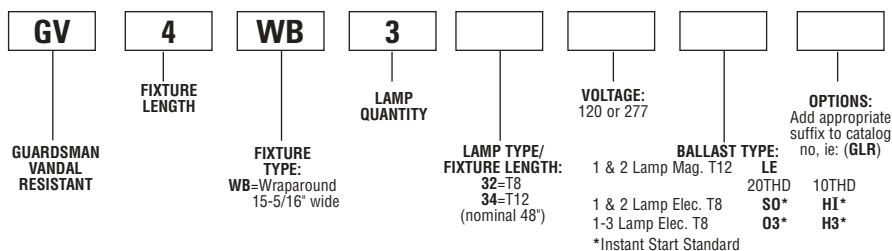
coefficient of utilization								
pfc	20		70			50		
	80	50	30	70	50	30	50	30
pcc	70	50	30	70	50	30	50	30
pw	70	50	30	70	50	30	50	30
RCR								
0	93	93	93	91	91	91	85	85
1	85	81	79	82	80	77	75	72
2	78	71	67	76	69	65	66	61
3	71	64	56	68	61	56	58	54
4	66	56	50	64	55	48	53	46
5	60	51	44	58	50	42	46	42
6	56	46	39	54	45	38	42	36
7	52	41	34	50	40	34	39	33
8	47	38	30	46	36	30	35	29
9	45	34	28	44	34	28	33	27
10	41	32	26	40	32	26	29	25

typical V.C.P.'s			
Room Size	Mounting Height		
	Lengthwise	Crosswise	
	8.5	10	8.5 10
30x30	58	61	52 57
40x40	55	57	47 52
60x30	59	62	56 60
60x60	52	54	42 46
100x100	50	51	37 40

candlepower			
angle	end	45	cross
0	2339	2339	2339
5	2340	2337	2331
15	2267	2302	2328
25	2110	2208	2274
35	1876	2053	2133
45	1534	1730	1757
55	866	1020	973
65	474	540	679
75	260	310	453
85	68	184	322
95	0	134	266
105	1	137	205
115	4	94	129
125	8	60	78
135	10	45	60
145	9	34	47
155	9	22	33
165	8	12	17
175	8	7	9

ORDERING INFORMATION

Explanation of Catalog Number. Example: GV4WB33212003GLR



Other dimming options. Consult factory.

OPTIONS & ACCESSORIES

SCREWDRIVER: For holt head screw. Order Catalog Number LP156737.

ELECTRICAL/WIRING OPTIONS Consult factory

FUSING: Internal fast-blow fusing.
SUFFIX: **GLR**.
Internal slow-blow fusing.
SUFFIX: **GFM**.

SPECIFICATIONS

PERFORMANCE: In an installation of 3 lamp 32W luminaires in a room cavity ratio of 1, reflectance 80% ceiling, 50% wall, 20% floor, the C.U. shall not be less than .81. To reduce glare the VCP shall be not less than 42 either cross-wise or lengthwise (at 100fc level) and the average brightness at 65° shall not exceed 2729 candelas per square meter. To control veiling reflections, luminaire output in the 30°-90° zone shall not be less than 72.8%.

MATERIALS: Chassis parts are die formed code gauge cold rolled steel.

FINISH: Multi-stage phosphate treated for maximum corrosion resistance and finish coat high reflectance baked white enamel.

SPECIFICATIONS (continued)

LENS: Prismatic lens is 50% DR (impact resistant) and 50% standard acrylic with a nominal thickness of 1/8", withstands 70 ft. lbs. impact without breaking.

SCREWS: Tamper resistant holt head screws secure lens to housing.

ELECTRICAL: Thermally protected class "P" ballast C.B.M. approved, non PCB. If K.O. is within 3" of ballast, use wire suitable for at least 90°.

LABELS: I.B.E.W./UL and C-UL.

Job Information

Type:

Lightolier a Genlyte Thomas Company www.lightolier.com
Technical Information: (978) 657-7600 • Fax (978) 658-0595
631 Airport Road, Fall River, MA 02720 • (508) 679-8131 • Fax (508) 674-4710
We reserve the right to change details of design, materials and finish.
© 2002 Genlyte Thomas Group LLC (Lightolier Division)
A0902 **Section 6A/Folio P20-61**

LIGHTOLIER