

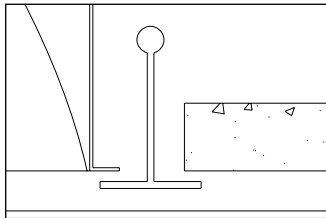
Features

- Efficiency 56.7%.
- Flat blade louver with lens overlay and perforated curved side blades.
- Seamless welded form: curved top and side reflectors are formed together without any gaps or visual barriers.
- No visible welding, screws, latches, springs, hooks, rivets or plastic supports.
- 95% reflective Alter soft white paint finish.
- 5-1/2" deep, one-piece body for easy installation.
- Choice of white microperforated blade, white solid blade or grey solid blade.
- Easy access to ballast through lamp compartment.
- Fits standard T-grid, exposed slot T-grid ceilings and drywall ceilings.
- Fully recessed luminaire and lamp compartment.
- Optional hold-down clips.
- Luminaire can be row mounted.

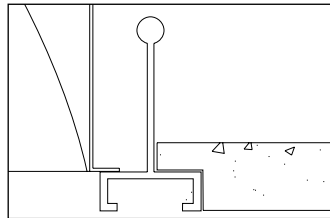


Mounting Methods / Features

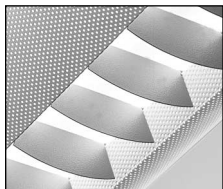
Ceiling compatibility



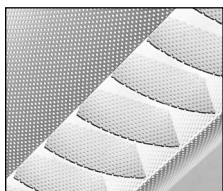
Suite to standard T-grid ceilings



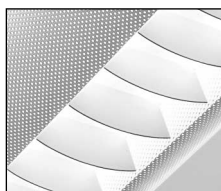
Suite to standard exposed slot T-grid ceilings



Microperforated mesh
white lamp shields
grey solid louver

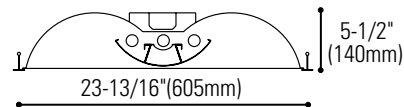
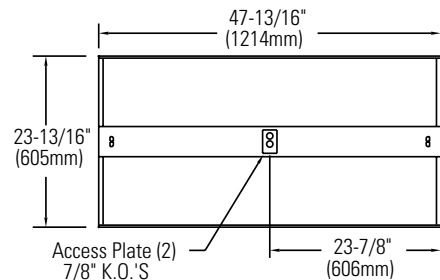


Microperforated mesh
white lamp shields
white mesh louver



Microperforated mesh
white lamp shields
white solid louver

Dimensions



Job Information

Type:

Job Name:

Cat. No.:

Lamp(s):

Volts/Ballast:

Lightolier a Genlyte Thomas Company

www.lightolier.com

Technical Information: (978) 657-7600 • Fax (978) 658-0595
631 Airport Road, Fall River, MA 02720 • (508) 679-8131 • Fax (508) 674-4710

We reserve the right to change details of design, materials and finish.

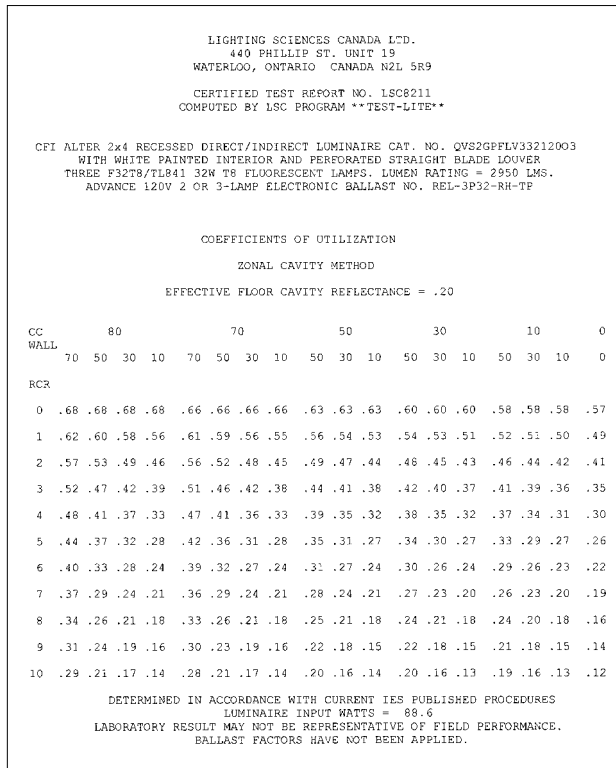
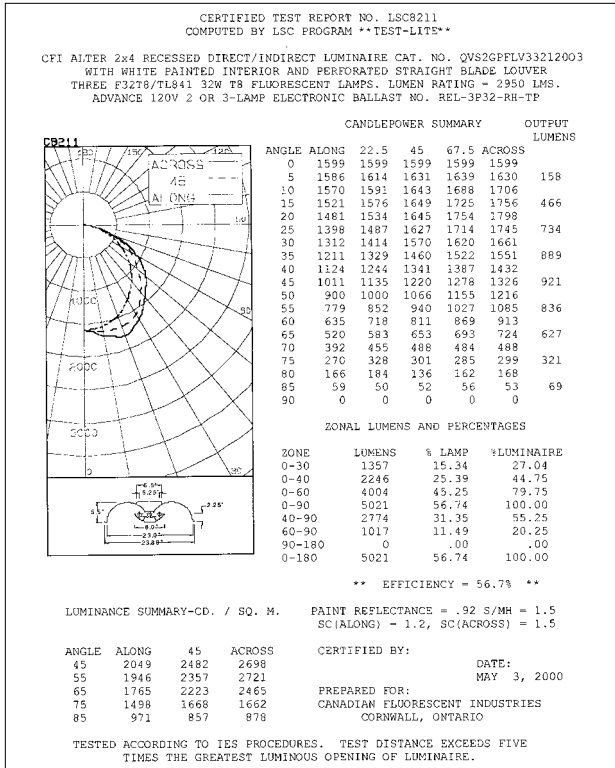
© 2002 Genlyte Thomas Group LLC (Lightolier Division)

A0902

Folio L30-25

LIGHTOLIER®

Photometry



Ordering Information

Explanation of Catalog Number Example: QVS2GPFLV33212003

QVS	2	G	PF		3	32			
FAMILY QVS: Quality Visual Louver	LUMINAIRE WIDTH: 24"	CEILING TYPE: G = Grid	LAMP SHIELD: PF = Microperforated mesh		LAMP QUANTITY 3	LAMP 32 = 32W (T8 nominal 48")	VOLTAGE: 120V 277V 347V	BALLAST: OC = Magnetic T8 SO = 1 or 2 LPB electronic T8 IS SR = 1 or 2 LPB electronic T8 RS O3 = 3 LPB electronic T8 IS R3 = 3 LPB electronic T8 RS PS = PowerSpec HDF Dimming Electronic T8	OPTIONS: F = Internal Fusing (consult factory) N = Emergency lighting System (for U.S.) O = Emergency Lighting System (for Canada) R = Radio Interference Filter
			SHIELD DETAILING LG = Grey solid flat blade louver LV = White perforated flat blade louver LW = White solid flat blade louver						

LPB : Number of lamps per ballast

Specifications

MATERIALS: One piece chassis constructed from die formed 20 gauge cold rolled steel. Reflectors - 95% reflectance baked white acrylic matte paint finish. Soft white acrylic film on inside of lamp shield conceals lamp image.

FINISH: Chassis exterior - phosphate undercoating, baked white acrylic matte high reflectance paint finish. Louver - flat blade louver with soft white acrylic overlay.

ELECTRICAL: Rapid start HPF, thermally protected class "P" ballast. If K.O.s are within 3" of ballast use wire suitable for at least 90C.

LABELS: Listed by



Job Information

Type:

Lightolier a Genlyte Thomas Company

www.lightolier.com

Technical Information: (978) 657-7600 • Fax (978) 658-0595

631 Airport Road, Fall River, MA 02720 • (508) 679-8131 • Fax (508) 674-4710

We reserve the right to change details of design, materials and finish.

© 2002 Genlyte Thomas Group LLC (Lightolier Division)

A0902

Folio L30-25

LIGHTOLIER