

ELKAY[®]

SPECIFICATIONS

Sturdibilt[®] Scullery Sink Square Corner Triple Compartment

GENERAL

Model No. SS _____ #14 gauge, type 304 stainless steel scullery sink. Compartments 14" deep. Square corner welded construction. Full length 8" high back-splash with 45° sloped top. 1-1/2" wide inward sloping top channel rims. Integral drainboard/s, sink compartments pitched to drain. Exposed surfaces polished to a satin finish.

Sinks supported on (4) LK251 stainless steel, 1-5/8" O.D. tubular legs, #16 gauge wall thickness. Adjustable bullet shaped feet.

- Shaded areas are models carried in stock with standard faucet location.
 - Non-shaded areas with specified dimensions are standard models which must be made to order – standard faucet location unless otherwise specified.
 - Last item in each group is custom. Fill in dimensions. Standard faucet location unless otherwise specified.
- Drainboards over 25-1/2" furnished with one tubular leg.
Drainboards over 48" furnished with two tubular legs.

SPECIFIED FITTINGS:

SUPPLY:

DRAIN:

FURNISHED WITH:

LK251. (Four) Stainless steel tubular legs, 1-5/8" O.D., #16 gauge. Adjustable bullet feet.

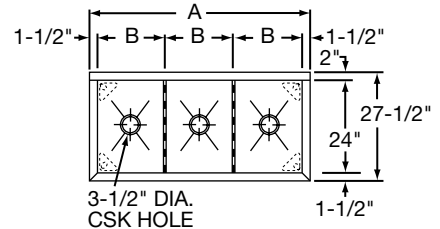
ALL DIMENSIONS IN INCHES.

SEE OTHER SIDE FOR DIMENSIONS IN MILLIMETERS.

(CHECK MODEL SPECIFIED):

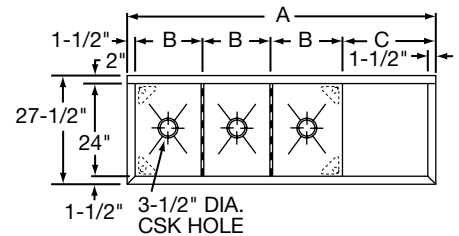
NO DRAINBOARD

Model Number	Dimensions	
	A	B
SS8345	48	15
SS8354	57	18
SS8360	63	20
SS8372	75	24
• SSC8300		



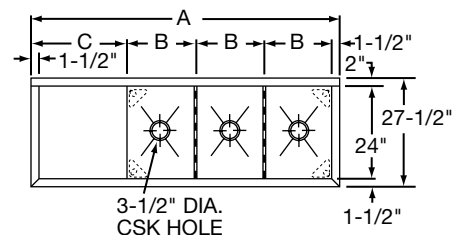
RIGHT DRAINBOARD

Model Number	Dimensions		
	A	B	C
SS8345R	70 1/2	15	24
SS8354R	79 1/2	18	24
SS8372R	97 1/2	24	24
• SSC8300R			



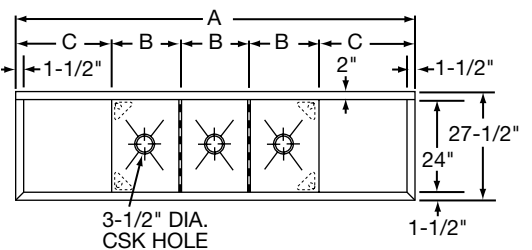
LEFT DRAINBOARD

Model Number	Dimensions		
	A	B	C
SS8345L	70 1/2	15	24
SS8354L	79 1/2	18	24
SS8372L	97 1/2	24	24
• SSC8300L			

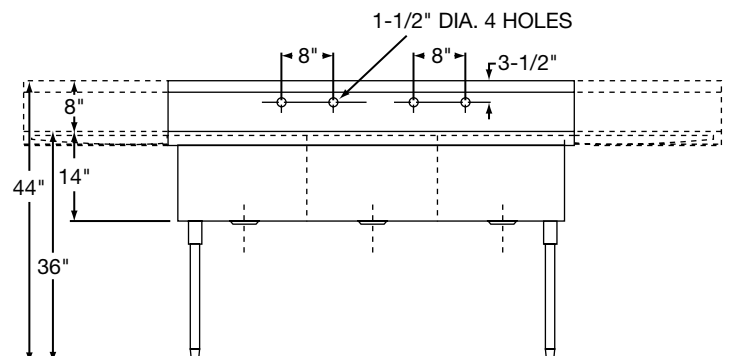


RIGHT & LEFT DRAINBOARD

Model Number	Dimensions		
	A	B	C
SS8345LR	93	15	24
SS8354LR	102	18	24
SS8360LR	108	20	24
SS8372LR	120	24	24
• SSC8300LR			



INDICATE NUMBER OF FAUCET HOLES WHEN PLACING ORDER. (NON-STANDARD FAUCET AND OVERFLOW DRILLING LOCATIONS ARE AVAILABLE. SPECIFY ON DRAWING AT RIGHT.)






**Sturdibilt® Scullery Sink
Square Corner
Triple Compartment**

**ELKAY®
SPECIFICATIONS**

GENERAL

Model No. SS _____ #14 gauge, type 304 stainless steel scullery sink. Compartments 356mm deep. Square corner welded construction. Full length 203mm high backsplash with 45° sloped top. 38mm wide inward sloping top channel rims. Integral drainboard/s, sink compartments pitched to drain. Exposed surfaces polished to a satin finish.

Sinks supported on (4) LK251 stainless steel, 41mm O.D. tubular legs, #16 gauge wall thickness. Adjustable bullet shaped feet.

-  Shaded areas are models carried in stock with standard faucet location.
-  Non-shaded areas with specified dimensions are standard models which must be made to order – standard faucet location unless otherwise specified.
-  Last item in each group is custom. Fill in dimensions. Standard faucet location unless otherwise specified. Drainboards over 648mm furnished with one tubular leg. Drainboards over 1,219mm furnished with two tubular legs.

SPECIFIED FITTINGS:

SUPPLY:

DRAIN:

FURNISHED WITH:

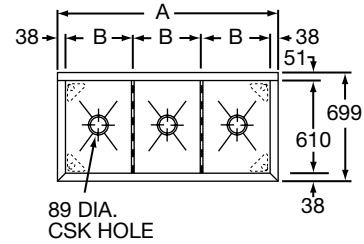
LK251. (Four) Stainless steel tubular legs, 41mm O.D., #16 gauge. Adjustable bullet feet.

ALL DIMENSIONS IN MILLIMETERS.
SEE OTHER SIDE FOR DIMENSIONS IN INCHES.

(CHECK MODEL SPECIFIED):

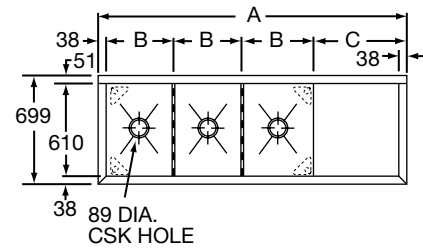
NO DRAINBOARD

Model Number	Dimensions	
	A	B
SS8345	1219	381
SS8354	1448	457
SS8360	1600	508
SS8372	1905	610
• SSC8300		



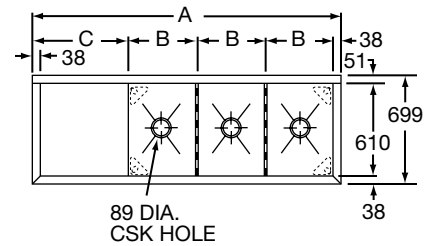
RIGHT DRAINBOARD

Model Number	Dimensions		
	A	B	C
SS8345R	1791	381	610
SS8354R	2019	457	610
SS8372R	2477	610	610
• SSC8300R			



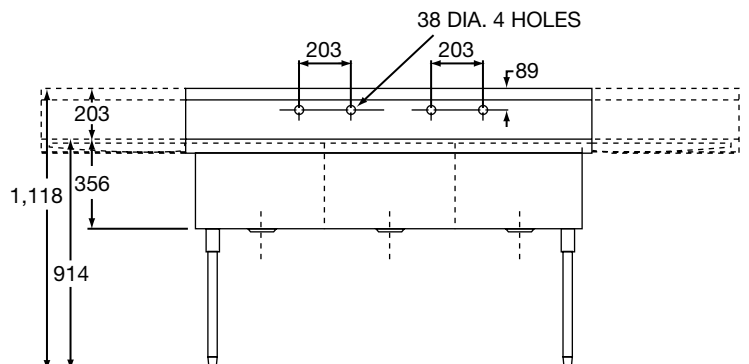
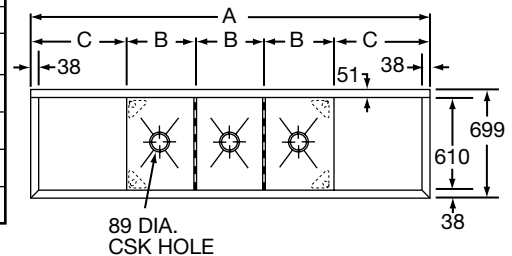
LEFT DRAINBOARD

Model Number	Dimensions		
	A	B	C
SS8345L	1791	381	610
SS8354L	2019	457	610
SS8372L	2477	610	610
• SSC8300L			



RIGHT & LEFT DRAINBOARD

Model Number	Dimensions		
	A	B	C
SS8345LR	2362	381	610
SS8354LR	2591	457	610
SS8360LR	2743	508	610
SS8372LR	3048	610	610
• SSC8300LR			



INDICATE NUMBER OF FAUCET HOLES WHEN PLACING ORDER. (NON-STANDARD FAUCET AND OVERFLOW DRILLING LOCATIONS ARE AVAILABLE. SPECIFY ON DRAWING AT RIGHT.)