

COOPER LIGHTING - METALUX®

DESCRIPTION

The staggered striplight accessory reflectors are designed to add function and flexibility to the SSL staggered striplight series. These durable accessory reflectors are designed to interface easily with the respective striplight housing to provide directional control.

The staggered striplight accessory reflectors are perfect for cove, cabinet, display and other directional striplight applications where staggered striplights are used to eliminate socket shadow.

| | | |
|-------------|--|------|
| Catalog # | | Type |
| Project | | |
| Comments | | Date |
| Prepared by | | |

SPECIFICATION FEATURES

A ... Construction

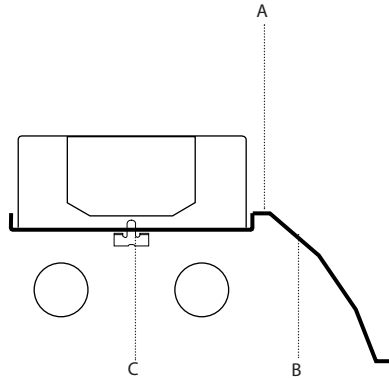
Reflectors are precision formed of code gauge prime cold rolled steel.

B ... Finish

Multistage iron phosphate pretreatment ensures maximum bonding and rust inhibition. High reflectance lighting grade baked white enamel finish standard. Specular silver finish optional.

C ... Mounting

The staggered striplight accessory reflectors are positively secured to the striplight housing and replace the channel cover. Each accessory matches the length of the housing to which it is to be mounted to provide an uninterrupted reflector when used in continuous rows.



See below for dimensions of each configuration.

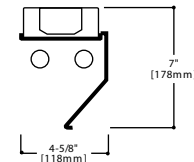
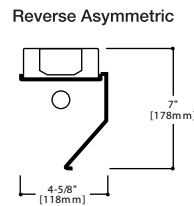
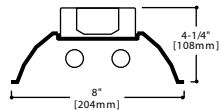
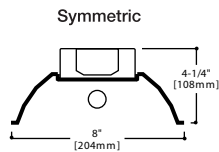
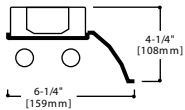
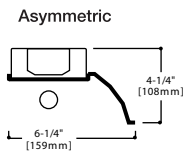
Staggered Striplight Accessory Reflector

SSL-ASY
SSL-SYM
SSL-REV

2', 3' or 4' Strip Reflector
1 or 2 Lamp

Configurations

SSL



LAMPS CONTAIN MERCURY. DISPOSE ACCORDING TO LOCAL, STATE OR FEDERAL LAWS

LINEAR DISCONNECT
Safe and convenient means of disconnecting power



Accessory Reflector Nomenclature

SAMPLE NUMBER: SSL-SYM-SS-4-1



Strip Series
 SM=Micro
 SML=Micro Staggered
 SMW=Micro Wide
 SN=Narrow
 SNL=Narrow Staggered
 STN/SS=Standard
 SSL=Standard Staggered
 STM=Heavy Duty
 STW=Wide



Reflector Style
 ASY=Asymmetric
 ASY6=6" Asymmetric⁽⁸⁾
 SYM=Symmetric
 SYM12=12" Symmetric⁽⁸⁾
 REV=Reverse Asymmetric



Finish
 Blank=White
 SS=Specular
 RP=Round Perf⁽¹⁾



Length
 18=18 Inch⁽²⁾
 2=2 Foot
 3=3 Foot
 4=4 Foot
 5=5 Foot⁽¹⁾
 6=6 Foot^(3, 4)
 6T=6 Foot⁽⁴⁾
 8=8 Foot^(5, 6)
 8T=8 Foot⁽⁶⁾



No. of lamps
 1=1 Lamp
 2=2 Lamp
 4=3 or 4 Lamp⁽⁷⁾

NOTES:

- (1) For SM, SML and SMW only.
- (2) For SN only.
- (3) For use with STN/SS with F072 lamp only.
- (4) Will ship as (2) 3ft. reflectors.
- (5) For use with STN/SS with F096 lamp only.
- (6) Will ship as (2) 4ft. reflectors.
- (7) For SMW only.
- (8) For SMW only.
- (9) For STN/SS only.

For complete product data, reference the Fluorescent Specification binder. Specifications and dimensions subject to change without notice. Consult your Cooper Lighting Representative for availability and ordering information.

Shipping Information

| Catalog No. | Wt. |
|------------------------------|--------|
| SSL-4IN-ASY-2FT-1LT-REFL | 2 lbs. |
| SSL-4IN-ASY-2FT-2LT-REFL | 2 lbs. |
| SSL-4IN-ASY-3FT-1LT-REFL | 2 lbs. |
| SSL-4IN-ASY-3FT-2LT-REFL | 2 lbs. |
| SSL-4IN-ASY-4FT-1LT-REFL | 3 lbs. |
| SSL-4IN-ASY-4FT-2LT-REFL | 3 lbs. |
| SSL-4IN-SYM-2FT-1LT-REFL | 2 lbs. |
| SSL-4IN-SYM-2FT-2LT-REFL | 2 lbs. |
| SSL-4IN-SYM-3FT-1LT-REFL | 3 lbs. |
| SSL-4IN-SYM-3FT-2LT-REFL | 3 lbs. |
| SSL-4IN-SYM-4FT-1LT-REFL | 4 lbs. |
| SSL-4IN-SYM-4FT-2LT-REFL | 4 lbs. |
| SSL-4IN-ASY/REV-2FT-1LT-REFL | 2 lbs. |
| SSL-4IN-ASY/REV-2FT-2LT-REFL | 2 lbs. |
| SSL-4IN-ASY/REV-3FT-1LT-REFL | 2 lbs. |
| SSL-4IN-ASY/REV-3FT-2LT-REFL | 2 lbs. |
| SSL-4IN-ASY/REV-4FT-1LT-REFL | 3 lbs. |
| SSL-4IN-ASY/REV-4FT-2LT-REFL | 3 lbs. |