

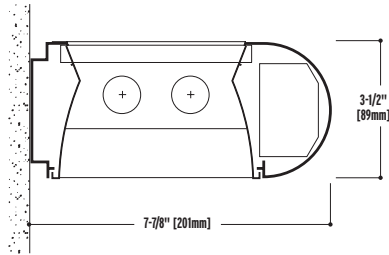
NEO-RAY™



OMNI 66-DIW

DIRECT-INDIRECT

- Direct – indirect light distribution.
- 50/50 light distribution.
- Extruded aluminum housing.
- Nominal 3', 4', 6' and 8' illuminated sections for individual or continuous runs.
- Parabolic louver designed for continuous unbroken appearance.
- Pearlescent low glare louver finish.
- .125" thick aluminum end caps.



Construction

Extruded Aluminum housing. Nominal 4' or 8' illuminated sections.

Shielding

Pearlescent parabolic baffle. Clear acrylic (B) and prismatic lens (A) above.

Electrical

120, 277, 347 or Universal Voltage electronic ballast. Luminaires and electrical components certified to UL and CUL standards.

Finish

Durable, low gloss, white, powder coated acrylic finish.

Mounting

Fixture mounts directly to existing structure over a 2" x 4" standard electrical box **mounted horizontally** in the wall.

ORDERING INFORMATION:

Sample number: 66DIW-1T8-4-2EB-SI-S58

Series

66=Omni

Light Output

DI=Direct/Indirect

Mounting

W=Wall

Number of Lamps (per cross section) (not included)

1=1 Lamp 2=2 Lamps

Lamp Type

T8

Run Length

Overall Nominal Run Length__ft. (Any combination of 8', 6', 4' and 3' sections)

Voltage ¹

1=120V 2=277V 3=347V U=Universal

Ballast

EB=Electronic Ballast (Standard) DB=Dimming Ballast

Switching

SI=Single Switching DU=Dual Switching (2 Lamps)

Emergency

EM=Emergency Pack (Consult Factory)

Fusing

GLR GMF

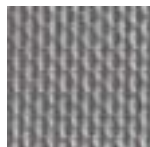
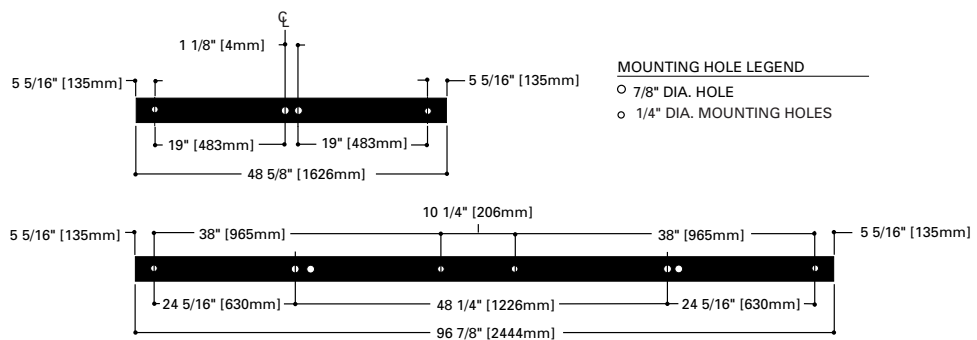
Shielding

S58=KSH-12 Clear Acrylic Prismatic Lens

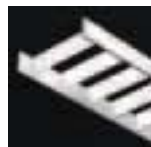
S79=Semi-Specular Aluminum Parabolic Baffle

¹ Due to various constraints, some options may not be combined with others.

MOUNTING HOLE PATTERN



S58 Acrylic Lens



S79 Parabolic Baffle

NOTES: For complete product data, refer to the Neo-Ray Specification Binder. Specifications and dimensions subject to change without notice. Products may be modified for use in international markets. Please contact your Cooper Lighting Sales Representative for availability and ordering information.