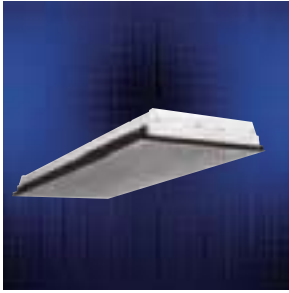


COOPER LIGHTING - METALUX®



2GCAPL, 2GCAML SERIES

2' x 2' and 2' x 4' Troffer
2, 3 or 4 Lamp

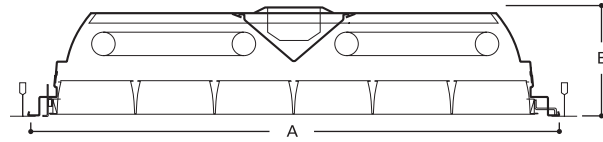
**SPECIFICATION RECESSED
AIR SUPPLY TROFFER
MULTI-CELL METAL
OR PLASTIC LOUVER**

- Equipped with energy saving ballasts/complies with federal energy efficiency standards
- Concealed frame, multi-cell 1" deep injection molded parabolic louver (GCAPL)
- Deep "V" raceway/ballast cover ⁽⁴⁾
- Self-locking, spring loaded, cam latches, T hinges
- Concealed frame, multi-cell 3/4" or 1-1/2" deep parabolic aluminum louver (GCAML)
- One-piece para-contoured housing (GCAML)
- Various louver finishes available (GCAML)
- For information on flanged fixture, including ceiling opening size, see Technical Section.
- UL/CUL Listed. Suitable for damp locations.

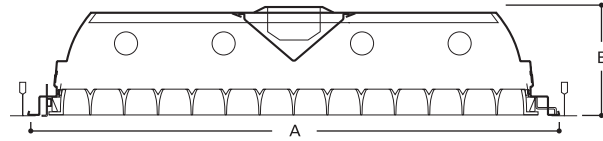
DESCRIPTION

The GCAML and GCAPL Series features optimum lamp to lens spacing. The finish provides high reflectance. The Series produces total uniformity of light in the luminous area and is compatible with all of today's popular ceiling systems. The GCAML and GCAPL Series is an excellent choice for commercial office spaces, schools, hospitals or retail merchandising areas.

DIMENSIONS



GCAML



GCAPL

| NOMINAL SIZE | A | B |
|--------------|-----------------|----------------|
| 2' x 2' | 23-3/4" (603mm) | 4-5/8" (117mm) |
| 2' x 4' | 23-3/4" (603mm) | 4-5/8" (117mm) |

ORDERING INFORMATION

SAMPLE NUMBER: 2GCAML-232S57151-120V-EB81-U

| | | | | | |
|---|---|--|--|---|--|
| <p>2' Width</p> | <p>Trim Type G=Grid/Lay-in - Standard G=Concealed T G=Slot Grid ⁽¹⁾ F=Flange Trim MZ=Modular Trim</p> | <p>Number of Lamps⁽²⁾ 2, 3 or 4 lamps (Not Included)</p> | <p>Wattage (Length) U6=40W T12 (24") U6T8=32W T8 (24") U15/8=31W T8 (24") BX40=40W Biax (24") 17=17W T8 (24") 20=20W T12 (24") 40=40W T12 (48") 32=32W T8 (48")</p> | <p>Voltage⁽³⁾ 120V=120 Volt 277V=277 Volt 347V=347 Volt UNV=Universal Voltage 120-277 ⁽⁴⁾</p> | <p>Options (See Options Section)</p> |
| <p>Series C=Specification Deep Troffer</p> | <p>A=For Air Handling Floating Door, Black Reveal B=For Non-Air Handling Floating Door, Black Reveal</p> | <p>Louver S=Silver (GCAML Only) W=White (GCAML Only) PB2S=Parabolic Injection Molded Louver 1-1/2" x 1 1/2" x 1" (GCAPL Only)</p> | <p>Cell Configuration (GCAML Only) 66=6 Rows of 6, 36 Cell 77=7 Rows of 7, 49 Cell 613=6 Rows of 13, 78 Cell 715=7 Rows of 15, 105 Cell 1313=13 Rows of 13, 169 Cell 1329=13 Rows of 29, 377 Cell</p> | <p>Ballast Type⁽³⁾ Blank=Standard Magnetic Ballast (Biax & 20W) LE3=T12 Magnetic Energy Saving ER8 = T8 Electronic Program Rapid Start. Total Harmonic Distortion < 10% No. of Ballast 1, 2 or 3 EB8 = T8 Electronic Instant Start. Total Harmonic Distortion < 10% No. of Ballast 1, 2 or 3 EB8_/PLUS= T8 Electronic Instant Start. High Ballast Factor > 1.13. Total Harmonic Distortion < 20% No. of Ballast 1, 2 or 3 EB5 = T5 Biax Electronic Instant Start. Total Harmonic Distortion < 20% No. of Ballast 1, 2 or 3 TEB5 = T5 Biax Electronic Instant Start. Total Harmonic Distortion < 10% No. of Ballast 1, 2 or 3 EB2 = T12 Electronic Rapid Start. No. of Ballast 1 or 2 DLS=Digital Lighting System Dimming (For complete details on generic or to specify manufacturer's ballast see pg. 469)</p> | <p>Packaging U=Unit Pack PAL=Job Pack, out of carton PALC=Job Pack, in carton</p> |
| <p>Blank=No Vane V=Directional Air Vane For Use With Air Handling Fixture Only</p> | <p>PL=Frameless Plastic Parabolic ML=Frameless Metal Parabolic</p> | <p>Louver Finish (GCAML Only) H=Semi-Specular/Haze (Gold only) I=Semi-Specular/Haze (Low Iridescent) (Silver only) MI=Specular/Mirrored (Low Iridescent) (Silver only) P=White Enamel Finish (White only)</p> | <p>Starting Type LTS=Low Trigger Start (20 Watt Only) (120V Only) HTS=High Trigger Start (20 Watt only)</p> | | |

NOTES: ⁽¹⁾An EQ Grid Clip is recommended for all 9/16" ceiling systems. ⁽²⁾Standard off-center ballast compartment on 3-lamp fixtures. ⁽³⁾Products also available in non-US voltages and frequencies for international markets. ⁽⁴⁾Not available when specifying emergencies, voltage must be specified.

For complete product data, reference the Fluorescent Specification binder. Specifications & dimensions subject to change without notice. Consult your Cooper Lighting Representative for availability and ordering information.