

DESCRIPTION

638 Semi-Indirect Wall Sconce features a Floating Quarter Sphere surrounded by a "halo" of illumination and is available in two sizes.

Catalog #		Type
Project		
Comments		Date
Prepared by		

SPECIFICATION FEATURES

Material

Painted or plated cold-rolled steel base metal. Optional aluminum hexcel top louver, white.

Finish

Standard: Matte White (MW). Premium: Satin Chrome (SC), Polished Chrome (PC), Satin Brass (SB), Polished Brass (PB), Satin Copper (SCP), Polished Copper (PCP), Satin Nickel (SN), Polished Nickel (PN), Oxidized Brass (OBRS), Lacquered Satin Chrome (SCL), Lacquered Satin Nickel (SNL) or Custom Color (CC).

Optics

Refer to www.shaperlighting.com for complete photometrics.

Ballast

Integral electronic HPF, multi-volt 120/277V (347V Canada), thermally protected with end-of-life circuitry to accommodate the specified lamp wattage.

Lamp/Socket

12: Two (2) 13W (2GX7) 4-pin low wattage CFL lamps, two (2) 26W (G24q-3) quad tube CFL lamps or two (2) 75W A-19 lamps.
14": Two (2) 26W, 32W (GX24q-3) or 42W. (GX24q-4) 4-pin triple CFL lamps or two (2) 75W A-19 lamps. CFL socket injection molded plastic. INC socket fired ceramic rated for 660W-250V. Lamps furnished by others.

Installation

Supplied with a universal circular strap for a standard 4" J-box or plaster ring.

Options

Hexcel Top Louver (HL), Remote Emergency Battery (12" only) - Supplied by others (REM), Integral Emergency Battery (14" only) (IEM), Dimming Ballast (26W only) - Contact factory for ballast options (DM), Damp Location (DL): All Painted Finishes, Lacquered Satin Chrome (SCL) and Lacquered Satin Nickel (SNL) finishes only. Energy Star Rating - Consult factory.

Labels

U.L. and C.U.L approved for indoor and damp location. See options for damp location finishing requirements.

Modifications

Shaper's skilled craftspeople with their depth of experience offer the designer the flexibility to modify standard wall luminaires for project specific solutions. Contact the factory regarding scale options, unique finishes, mounting, additional materials/colors, or decorative detailing.



638 SERIES

Interior Wall Luminaire
Semi-Indirect



ORDERING INFORMATION

Sample Number: 638-14-CFL/2-277V-PCP

--	--	--	--	--	--

Series

638 =Wall Sconce

Size

12"
14"

Lamp

CFL/2 (26/32/42W- Triple) ¹
CFL/2/13 ²
CFL/2/26 ²
INC/2/75

Voltage

120V
277V ³
347V ³

Finish

Standard
MW=Matte White
Premium
CC=Custom Color
OBRS=Oxidized Brass
PB=Polished Brass
PC=Polished Chrome
PCP=Polished Copper
PN=Polished Nickel
SB=Satin Brass
SC=Satin Chrome
SCL=Lacquered Satin Chrome
SCP=Satin Copper
SN=Satin Nickel
SNL=Lacquered Satin Nickel

Options

DL=Damp Location
DM=CFL Dimming Ballast ^{4,5}
IEM=Integral Emergency Ballast ¹
REM=Remote Emergency Battery ^{2,6}
HL=Hexcel Louver

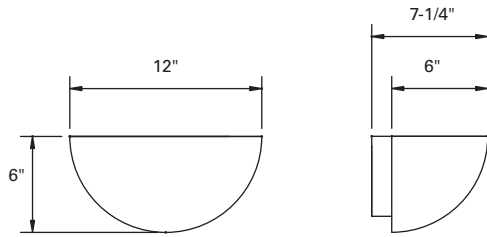
Notes:

- ¹ Available in 14".
- ² Available in 12".
- ³ Available with CFL only.
- ⁴ Consult the factory for available options.
- ⁵ 26W only.
- ⁶ Supplied by others.

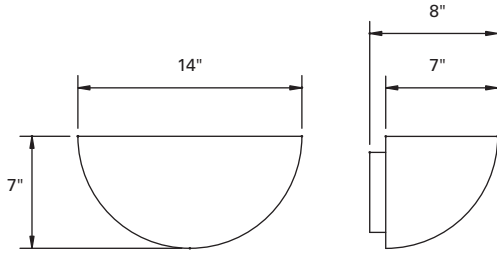
ENERGY STAR
Shaper now offers a wide variety of fixtures that can be provided with an Energy Star Rating.

MAGNETIC RESONANCE IMAGING (MRI)
Lighting fixtures for MRI facilities are specialized and unique, requiring non-ferrous construction. Fluorescent fixtures cannot be used due to the ferrous parts in ballasts and lampholders. Modified incandescent fixtures meet the requirements.

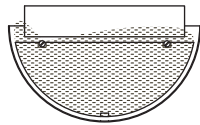
Refer to the Icon Legend
Link on shaperlighting.com.



12" STANDARD



14" STANDARD



HEXCEL TOP
LOUVER (HL)