

MADERA™ FloWise® 15" HEIGHT

- Floor mount flushometer valve toilet
- Vitreous china
- Meets definition for HET (High Efficiency Toilet)
- High Efficiency (4.8 Lpf/1.28 gpf)
- EverClean® surface inhibits the growth of stain- and odor-causing bacteria, mold, and mildew on the surface
- Fully glazed 2-1/8" trapway
- Elongated bowl
- 10" or 12" roughing-in
- 15" rim height
- Condensation channel
- Powerful direct-fed siphon jet action
- 10" x 12" water surface area
- 1-1/2" inlet spud
- 2 bolt caps
- 100% factory flush tested

- 3451.128** Elongated bowl only, top spud
- 3452.128** Elongated bowl only, top spud with slotted rim for bedpan holding (White only)
- 3453.128** Elongated bowl only, back spud
- 3455.128** Elongated bowl only, back spud with slotted rim for bedpan holding (White only)

Component Parts:

- 047007-0070A** Inlet Spud (furnished with bowl)
- 481310-100** Bolt caps with retainers (furnished with bowl)

Nominal Dimensions:

718 x 356 x 381mm
(28-1/4" x 14" x 15")

Recommended working pressure—between
25 psi at valve when flushing and 80 psi static

Fixture only, less flushometer valve and seat

Compliance Certifications -

Meets or Exceeds the Following Specifications:

- ASME A112.19.2 for Vitreous China Fixtures
- CAN/CSA International B45



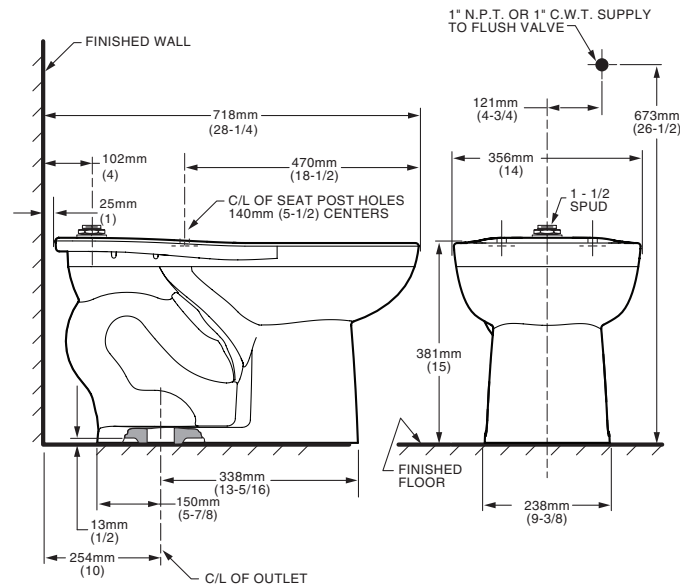
SEE REVERSE FOR ROUGHING-IN DIMENSIONS

To Be Specified:

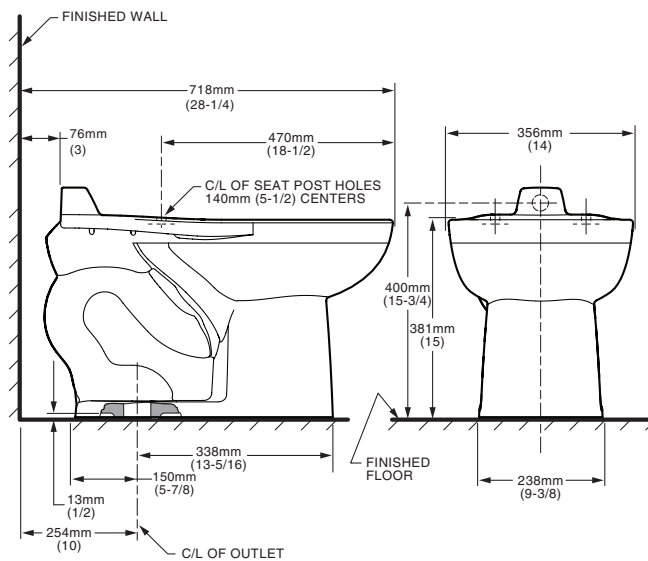
- Color: White Bone Silver Linen Black
- Seat:
 - American Standard #5901.100 Heavy duty open front less cover
 - American Standard #5905.100 Extra heavy duty open front less cover
- Flushometer Valve:
 - American Standard Selectronic™ #6065.121.002 DC Power (Top Spud)
 - American Standard Selectronic™ #6065.221.007 DC Power (Back Spud)
 - American Standard Selectronic™ #6067.221.007 AC Power (Back Spud)
 - American Standard Selectronic™ #6068.221.007 Multi AC Power (Back Spud)



3451.128/3452.128



3453.128/3455.128



NOTES:

PRODUCT 3451.160 AND 3453.160 SHOWN, 3452.160 AND 3455.160 SAME AS EXCEPT WITH SLOTTED RIM FOR BED PAN HOLDING. TO COMPLY WITH AREA CODE GOVERNING THE HEIGHT OF VACUUM BREAKER ON THE FLUSHOMETER VALVE, THE PLUMBER MUST VERIFY DIMENSIONS SHOWN FOR SUPPLY ROUGHING. THIS TOILET DESIGNED TO ROUGH-IN AT A MINIMUM DIMENSION OF 254MM (10") AND A MAXIMUM DIMENSION OF 305MM (12") FROM FINISHED WALL TO C/L OF OUTLET. FLUSHOMETER VALVE NOT INCLUDED WITH FIXTURE AND MUST BE ORDERED SEPARATELY. FLUSHOMETER VALVE REQUIREMENTS FOR 12" (305MM) ROUGH-IN: SWEAT EXTENSION NIPPLE IS REQUIRED. REFER TO VALVE MANUFACTURER AND LOCAL CODES.

IMPORTANT: Dimensions of fixtures are nominal and may vary within the range of tolerances established by ANSI Standard A112.19.2. These measurements are subject to change or cancellation. No responsibility is assumed for use of superseded or voided pages.