

**CHAMPION® SELECT ELONGATED  
RIGHT HEIGHT™ TOILET**

**2057.212**

- Vitreous china
- EverClean™ anti-microbial glaze (available Summer 2006)
- Low-consumption (6.0 Lpf/1.6 gpf)
- Features **Champion® Flushing System** performance platform
- 3" non-adjustable, flapper-free flush valve
- 16-1/2" rim height for accessible applications
- Elongated siphon action jetted bowl
- 2-3/8" fully-glazed trapway
- Speed Connect™ tank/bowl coupling system
- Trip lever color-matched to toilet
- Sweeping pier on bowl
- 100% factory flush tested
- 2 bolt caps
- 10 year warranty



**3225.016** Elongated Right Height™ Bowl

**4272.216** Tank

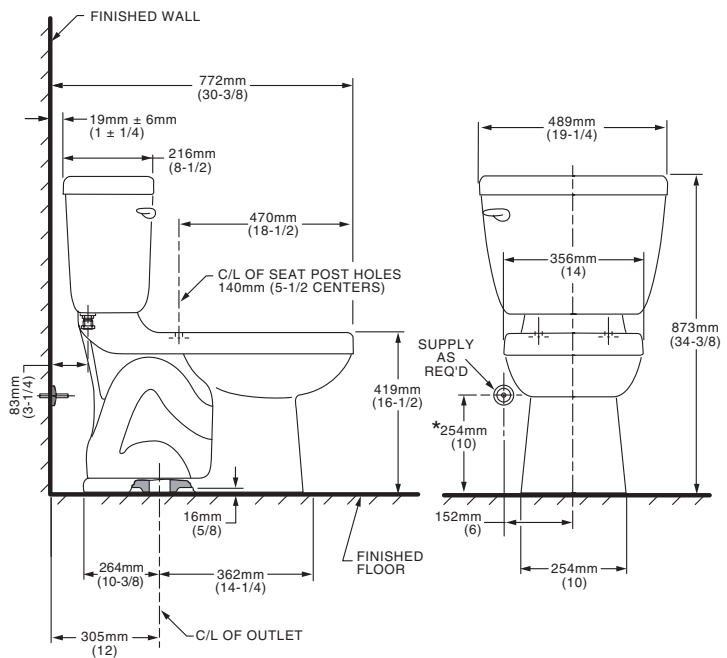
**Nominal Dimensions:**

772 x 489 x 873mm  
(30-3/8" x 19-1/4" x 34-3/8")

Fixture only, seat and supply by others

**Compliance Certifications -  
Meets or Exceeds the Following Specifications:**

- ASME A112.19.2M for Vitreous China Fixtures - includes Flush Performance, Ball Pass Diameter, Trap Seal Depth and all Dimensions
- Los Angeles Department of Water and Power Supplementary Purchase Specification for Non-Adjustability - July, 2003 revision



**NOTES:**

THIS TOILET IS DESIGNED TO ROUGH-IN AT A MINIMUM DIMENSION OF 305MM (12") FROM FINISHED WALL TO C/L OF OUTLET. SUPPLY NOT INCLUDED WITH FIXTURE AND MUST BE ORDERED SEPARATELY. \* DIMENSION SHOWN FOR LOCATION OF SUPPLY IS SUGGESTED.

**IMPORTANT:** Dimensions of fixtures are nominal and may vary within the range of tolerances established by ANSI Standard A112.19.2. These measurements are subject to change or cancellation. No responsibility is assumed for use of superseded or voided pages.

**To Be Specified:**

- Color:
  - White  Bone  Silver  Linen  Black
- Seat: (please specify color)
  - Champion® Slow Close Elongated #5325.010
  - Rise & Shine Elongated #5324.019
  - Laurel Elongated #5311.012
- Supply with stop:

MEETS THE AMERICANS WITH DISABILITIES ACT GUIDELINES AND ANSI A117.1 REQUIREMENTS FOR ACCESSIBLE AND USABLE BUILDING FACILITIES-CHECK LOCAL CODES.

