

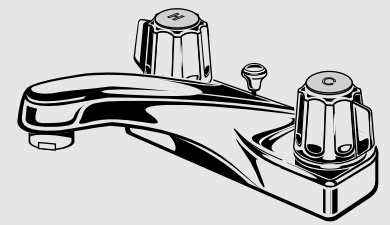
*American Standard*

# Installation Instructions 2930.000

## CENTERSET LAVATORY FAUCET

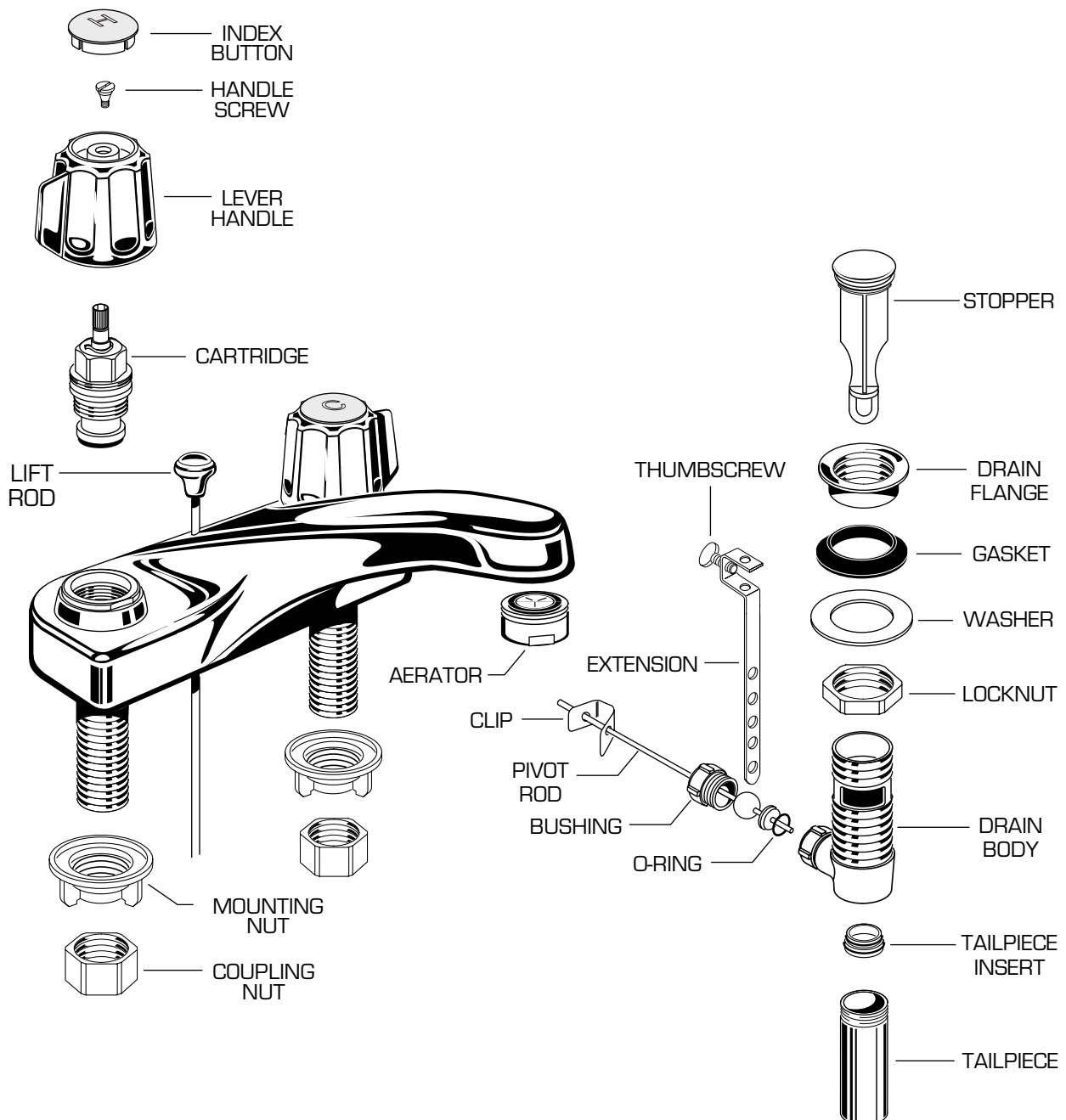
*Thank you for selecting American-Standard...the benchmark  
of fine quality for over 100 years.*

*To ensure that your installation proceeds smoothly—please  
read these instructions carefully before you begin.*



Certified to comply with ANSI A112.18.1M

M968120



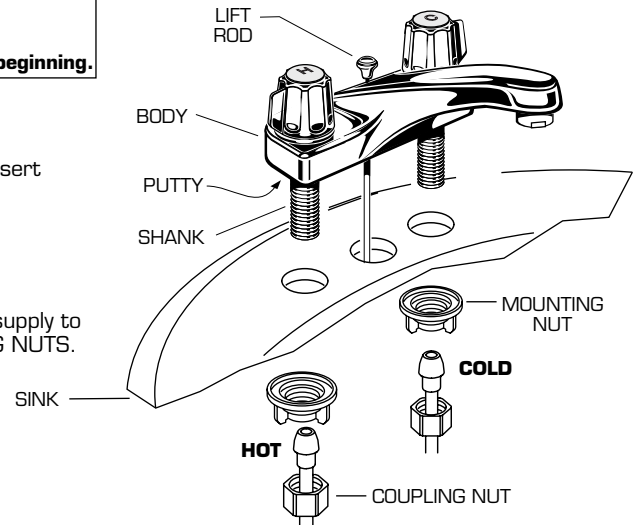
# 1

## INSTALL FAUCET

### CAUTION

Turn off hot and cold water supplies before beginning.

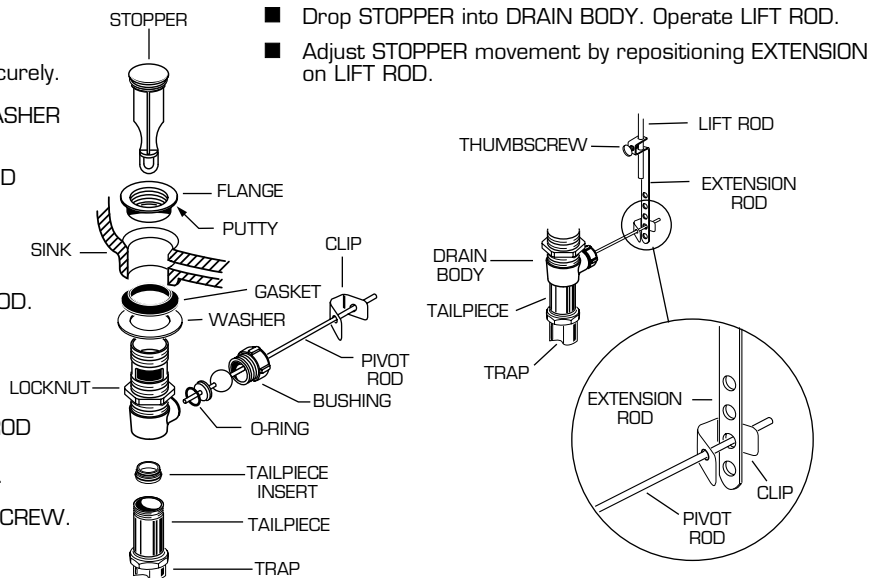
- Apply a bead of PUTTY along the edge of the underside of the BODY. Insert faucet SHANKS through holes of SINK.
- Place faucet as far forward as possible.
- Assemble and tighten MOUNTING NUTS from underside of SINK.
- Connect the HOT water supply to the left SHANK and the COLD water supply to the right SHANK using sealant, appropriate connectors, and COUPLING NUTS.
- Insert LIFT ROD through hole in BODY.



# 2

## INSTALL POP-UP DRAIN

- Thread TAILPIECE into DRAIN BODY and tighten securely.
- Thread LOCKNUT fully onto DRAIN BODY. Drop WASHER and GASKET onto DRAIN BODY.
- Remove CLIP from PIVOT ROD. Assembly PIVOT ROD to DRAIN BODY with BUSHING.
- Apply a bead of putty to underside of FLANGE.
- Insert DRAIN BODY from below through SINK hole with the PIVOT ROD pointed toward the LIFT ROD.
- Thread FLANGE fully onto DRAIN BODY. Tighten LOCKNUT firmly, keeping the PIVOT ROD pointed toward the LIFT ROD.
- Slide EXTENSION onto LIFT ROD and insert PIVOT ROD through the second or third hole. Secure with CLIP. EXTENSION may need to be bent to suit installation.
- Move PIVOT ROD fully downward. Tighten THUMBSCREW.



# 3

## TEST INSTALLED FAUCET

- Remove AERATOR.
- Turn HANDLES to **OFF** position.
- Slowly turn on water supplies and check all connections for leaks.
- Operate both HANDLES to flush water lines thoroughly.
- Operate LIFT ROD and check DRAIN connections for leaks.
- Turn HANDLES to **OFF** position and replace AERATOR.

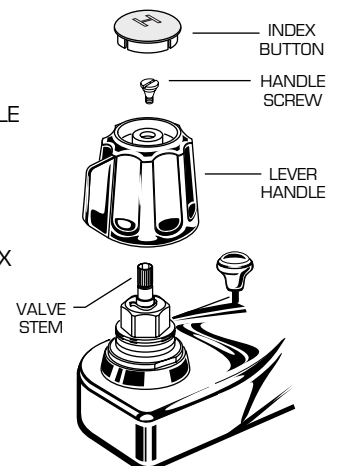
# 4

## SERVICE

- AERATOR may accumulate dirt causing distorted and reduced water flow. Remove AERATOR and rinse clean.

### ALIGN HANDLES

- Turn HANDLES to their off position.
- Remove INDEX BUTTON and HANDLE SCREW.
- Remove HANDLE and replace on VALVE STEM in desired position.
- Replace HANDLE SCREW and INDEX BUTTON.



HOT LINE FOR HELP  
For toll-free information and answers to your questions, call:  
1 (800) 223-0068  
Weekdays 8:00 a.m. to 7:00 p.m. Eastern Time  
Saturdays 8:00 a.m. to 4:00 p.m. Eastern Time  
IN CANADA 1-800-387-0369 (TORONTO 1-416-536-5609)

Product names listed herein are trademarks of American Standard Inc.  
©American Standard Inc. 1999

M968120