

### AKRON™ SERVICE SINK

- Enameled cast iron (inside only enameled)
- Supplied with wall hanger and rim guard
- Available with plain back or drilled back for faucet

**7695.008** With drilled back 2 holes on 8" centers and rim guard

**7695.000** With plain back and rim guard (no faucet hole drilling)

#### Available Components:

**8379.026** Rim Guard

#### Nominal Dimensions:

610 x 521mm  
(24" x 20-1/2")

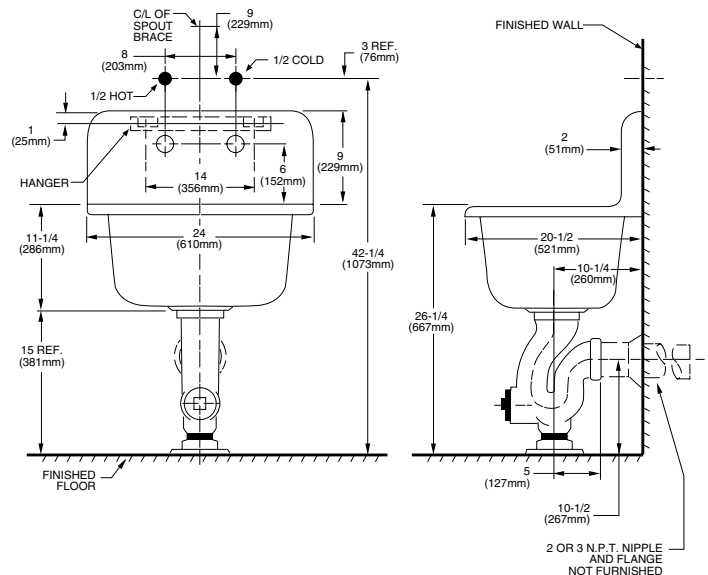
#### Bowl sizes:

19-7/8" (505mm) wide  
16-3/8" (416mm) front to back  
10-1/2" (267mm) deep

#### Compliance Certifications -

#### Meets or Exceeds the Following Specifications:

- ASME A112.19.1 for Cast Iron Plumbing Fixtures



#### To Be Specified:

- Faucet: 8340.235 exposed yoke wall-mount utility faucet
- Faucet: 8340.243 same as above with vacuum breaker
- Faucet: 8341.076 same as above with vacuum breaker and stops in shank
- Alternative Faucet
- Trap Standard: 7798.030 cast iron "P" trap standard to wall and strainer for 3" iron pipe
- Trap Standard: 7798.020 cast Iron "P" trap standard to wall and strainer for 2" iron pip

#### NOTES:

PROVIDE SUITABLE REINFORCEMENT FOR ALL WALL SUPPORTS. FITTING AND TRAP STANDARD NOT INCLUDED AND MUST BE ORDERED SEPARATELY.

**IMPORTANT:** Dimensions of fixtures are nominal and may vary within the range of tolerances established by ANSI Standard A112.19.2. These measurements are subject to change or cancellation. No responsibility is assumed for use of superseded or voided pages.