

RELIABILITY
STEEL CONSTRUCTION



FLEXIBILITY

VENTED

EASY INSTALLATION
QUALITY

RACK & ROLL

ROCK-SOLID AV RACK SYSTEMS
ENGINEERED FOR RELIABILITY,
SECURITY AND EASY INSTALLATION.



SECURITY

HIGH PERFORMANCE

Component AV Foundations™ 500 Series

Introducing the new Sanus Component AV Foundations™ 500 Series. Designed with high performance and structural integrity in mind, these sturdy racks are completely customizable for any AV need. Available accessories include locking doors, removable casters and multiple shelf options.



Heavy-gauge steel construction supports even the most complex AV gear arrangements



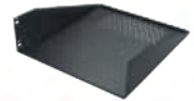
Completely customizable — available add-on accessories suit any AV need



Vented back panels provide increased airflow to keep components cool

500 Series Accessories

- Locking door: acrylic door with solid steel frame; solid steel door
- Removable casters
- Locking vented rear door
- 1U iPod® dock
- 1U shelves
- 3U shelves
- Blanking panels
- Extra screws
- 3U fan kit



Model CFR535-B1
List price \$799.00
Overall height with casters 67.25"/1708 mm
Overall width x depth 22" x 28"/559 x 711 mm
Rack spaces 35U



Model CFR518-B1
List price \$679.00
Overall height with casters 37.5"/953 mm
Overall width x depth 22" x 28"/559 x 711 mm
Rack spaces 18U

Component AV Foundations™ 100 Series

The new Sanus Component AV Foundations™ 100 Series turnkey solutions come fully loaded to simplify ordering, giving you the ultimate in quality and flexibility. Add available accessories to create a customized rack perfect for your unique installation.



Lockable tempered-glass door with 1/4-turn handle encloses gear while maintaining visibility



Removable side and back panels provide increased airflow to keep components cool



Adjustable feet and swivel casters allow in-cabinet integration or freestanding installation



Model CFR127-B1
List price \$799.00
Available October, 2009
Overall height with casters 55"/1397 mm
Overall width x depth 23.6" x 23.6"/600 x 600 mm
Rack spaces 27U
Welded construction, pre-assembled with:
 1U shelf, 30 lbs./13.6 kg, 15"/381 mm deep5
 3U shelf, 80 lbs./36.3 kg, 18"/457 mm deep3
 1U blanking panel5
 2U blanking panel3



Model CFR115-B1
List price \$549.00
Available October, 2009
Overall height with casters 34"/864 mm
Overall width x depth 23.6" x 23.6"/600 x 600 mm
Rack spaces 15U
Welded construction, pre-assembled with:
 1U shelf, 30 lbs./13.6 kg, 15"/381 mm deep2
 3U shelf, 80 lbs./36.3 kg, 18"/457 mm deep2
 1U blanking panel2
 2U blanking panel2

AV Foundations™ Euro Series Racks

Euro Series furniture creates a clean, modern foundation for your AV gear with a modular design that easily expands to fit any system. Open architecture ensures proper airflow, and rear cable management holes conceal and route cables and wires for an organized appearance.



Modular design is completely customizable and can easily expand to fit any AV system



Open architecture ensures constant airflow to keep components cool



Heavy-gauge steel frame provides incredible strength and rigidity



Rear cable management holes conceal and route cables for a clean, organized appearance



Model EFAS-IIb
List price \$59.99
Dimensions (w x d x h) 22.4" x 19.4" x 8.75"/569 x 493 x 222 mm
Width between pillars 19.5"/495 mm
Shelf capacity 125 lbs./56.7 kg



Model EFAB-IIb
List price \$89.99
Dimensions (w x d x h) 22.4" x 19.4" x 5.1"/569 x 493 x 130 mm
Width between pillars 19.5"/495 mm
Shelf capacity 125 lbs./56.7 kg



Model EFP5 (5" expansion pipe – set of 5)
List price \$19.99
Dimensions (w x d x h) 1.5" x 1.5" x 5"/38 x 38 x 127 mm



Model EFP12 (12" expansion pipe – set of 5)
List price \$24.99
Dimensions (w x d x h) 1.5" x 1.5" x 12"/38 x 38 x 305 mm



Model CK (Removable caster – set of 5)
List price \$29.99
Dimensions (w x d x h) 1.75" x 2" x 2.5"/44 x 51 x 64 mm