



Type:

Project:

Combo Mini Recessed Wall Accent/Downlight
Three (3) Light 60° Adjustable
New Construction Housing - 7.13" Height
12V Bi-Pin Base MR16 Lamp 75 Watts Max.

CM3W

CM32B

CM3S

Recessed adjustable trim suitable for wall wash and wall accent applications.

Ultra low profile trim flange for minimum ceiling architecture interference. Provides a sleek, architectural look.

Trim has a durable powder coat finish.

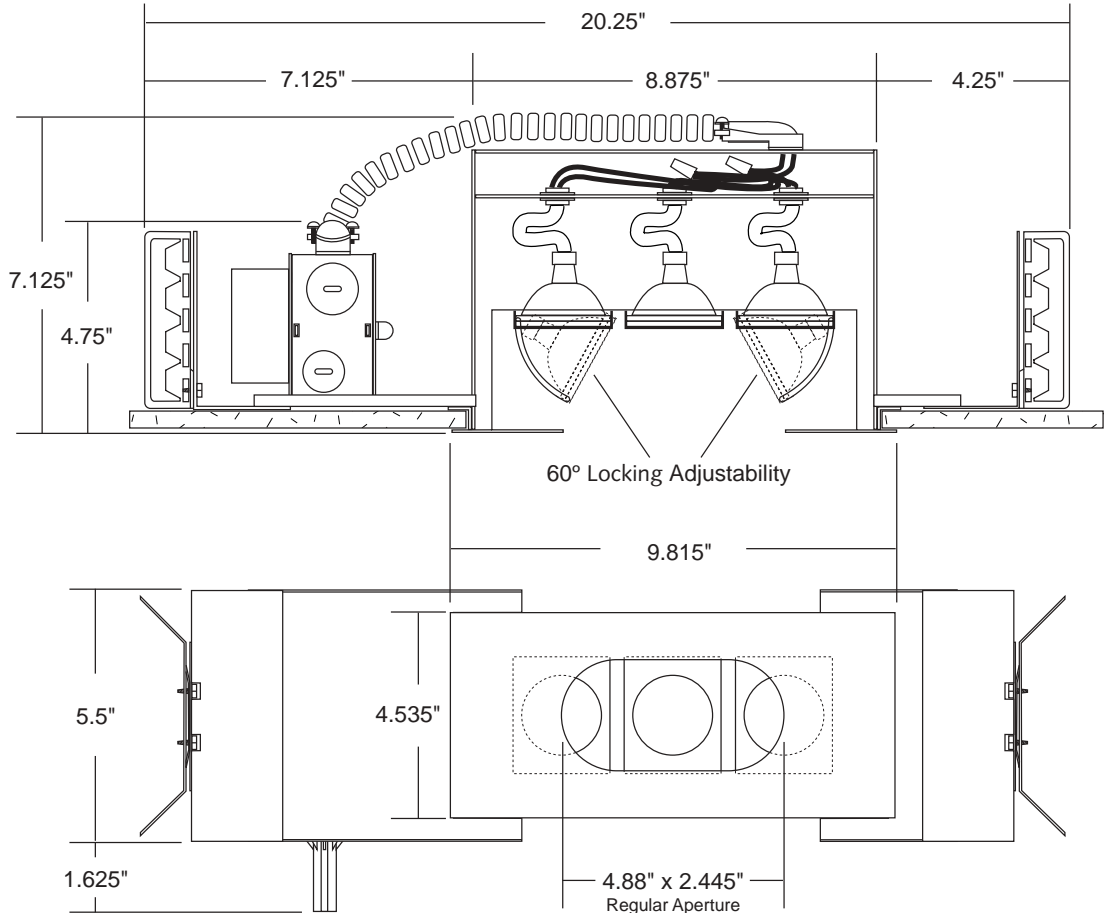
Inside of trim and lamp holder finished with flat black powder coat for reduced lamp glare.

Trim is retained in housing with heavy duty torsion spring clip.

All ComboMini™ fixtures can accept up to two (2) optical accessories per lamp.

Housing Construction:
 Plaster frame and housing are 18 gauge CRS with durable powder coat finish.

Integral electronic transformer with 14 gauge CRS galvanized J-Box assembly. External thermal protection. UL listed for through branch wiring for 8 #12, 90°C supply conductors or 60°C supply conductors for end of run.



Provided with two (2) 14 gauge steel butterfly type brackets for black iron installations.

Vent holes in housing (1/2" diameter) provide cooler operation.

Lamps adjust 60° for variable beam placement.

Housing adjusts in plaster frame to accommodate various ceiling thicknesses.

Item #	Description	Finish	Voltage / Wattage
CM3W	Combo Mini Recessed Wall Accent / Downlight Three Light 60° Adjustable	White	12V / 75W Max.
CM3B		Black	
CM3S		Silver	

