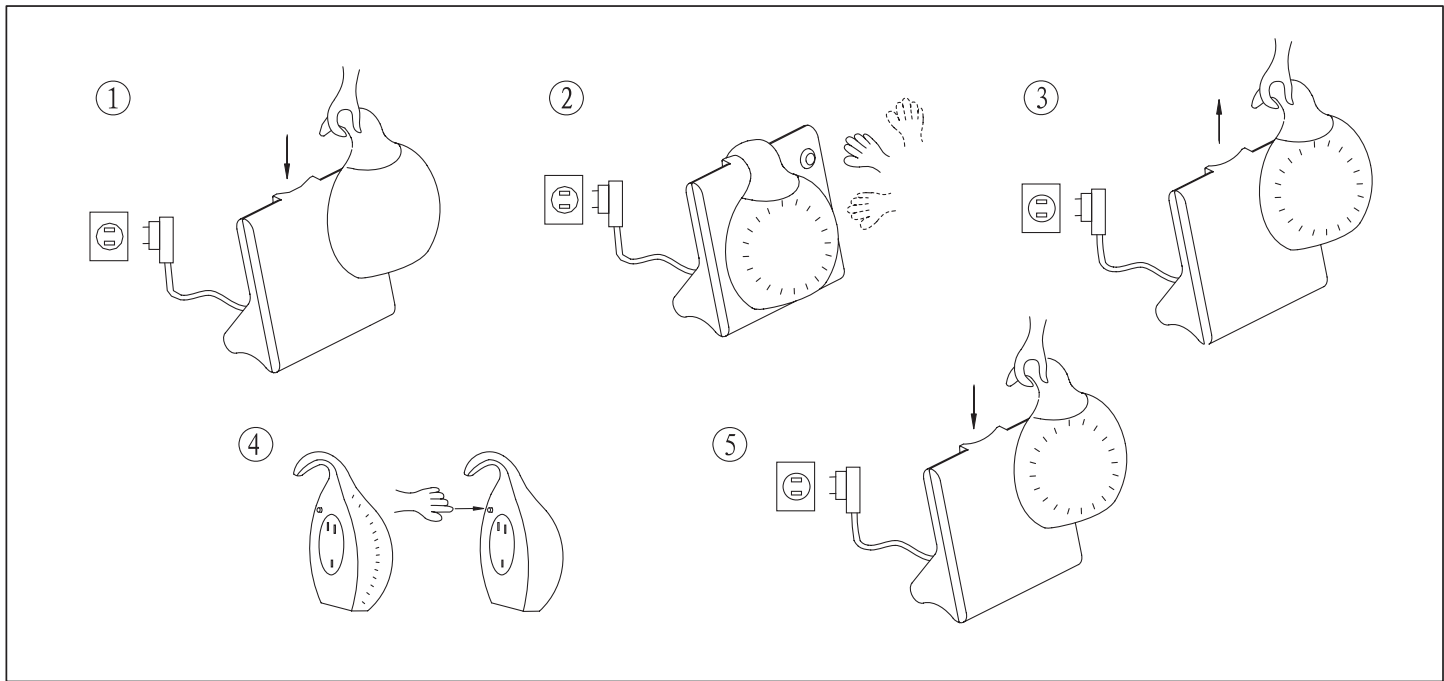


PHILIPS GuideLight™



SAVE THESE INSTRUCTIONS

Congratulations on your purchase! Thank you for buying the Philips GuideLight. Please read these instructions carefully before using the GuideLight. By following the instructions you will enjoy the full benefits of the GuideLight for the longest possible period. The GuideLight consists of one charger unit and one lamp unit.

Check to make sure that the package contains the following items:

- A. Charger Unit
- B. Lamp Unit

OPERATING INSTRUCTIONS

Using the Philips GuideLight for the first time

Charge the Philips GuideLight for at least 24 hours before using it for the first time.

Connect the charger unit with the plug into the wall socket. Then place your lamp unit on the charger in the slot dedicated for it. Before the first use, make sure to leave the lamp unit on the charger for at least 24 hours (see diagram 1).

If you want to have the best performance of your GuideLight, recharge it at least once every three months.

Switching the Philips GuideLight on and off

The Philips GuideLight contains a movement sensor

that allows it to gradually switch on automatically when it detects movements and to switch off automatically after 15 seconds. Because the movement sensor is integrated in the charger, the functionality of the sensor can only work when the lamp unit is placed on the charger (see diagram 2 & diagram 3).

The “on/off” button at the back of the lamp unit allows you to switch the light on and off when the lamp unit is not placed on the charger (see diagram 4).

After usage, when you put your GuideLight back on the charger, it switches off automatically. During 20 seconds, the movement sensor is deactivated in order to avoid unintentional switch. After that time, your GuideLight switches on automatically again when it senses movement (see diagram 5).

User-Maintenance Instructions

Remove the charger from the wall socket. The charger and the GuideLight can be cleaned with a dry or damp cloth. Do not use cleaning agents!



Do not submerge the individual parts in water.



Do not use perfumed liquids.



Do not expose the products to extreme heat.

INSTRUCTIONS PERTAINING
TO RISK OF FIRE, ELECTRIC SHOCK,
OR INJURY TO PERSONS

IMPORTANT SAFETY
INSTRUCTIONS

- Keep the charger away from liquids and dampness.
- For indoor use only.
- For safety reasons do not tamper with the components of the Philips GuideLight.
- Do not allow children to play with the charger.
- Do not use Philips GuideLight if it is damaged.
- Install it far away from a heat source.

WARNING

When using electric appliances, basic precautions should always be followed, including the following:

- a) Read all the instructions before using the appliance.
- b) To reduce the risk of injury, close supervision is necessary when an appliance is used near children.
- c) Only use attachments recommended or sold by the manufacturer.
- d) Do not use outdoors.
- e) To disconnect, turn all controls to the off position, then remove plug from outlet.
- f) Do not unplug by pulling on cord. To unplug, grasp the plug, not the cord.
- g) Unplug from outlet when not in use and before servicing or cleaning.
- h) Do not operate any appliance with a damaged cord or plug, or after the appliance malfunctions or is dropped or damaged in any manner. Return appliance to the nearest authorized service facility for examination, repair, or electrical mechanical adjustment.
- i) To reduce the risk of electrical shock, do not put the charger and/or flashlight unit in water or other liquid. Do not place or store appliance where it can fall or be pulled into a tub or sink.
- j) Use only the charger supplied by the manufacturer to recharge.
- k) Connect to a properly grounded outlet only.

Charger

Model: GL-PH
Input: 120 VAC 50/60Hz 1W
Output: 4.8 VDC 5mA

Safety and the environment

The GuideLight is a LED product, made from high-quality materials and parts.

Please follow state and local laws and regulations when recycling the packaging material.

The lamp unit contains rechargeable batteries that cannot be replaced. Please follow all state and local laws and regulations when disposing of the lamp unit.

FCC Compliance Statement

This device complies with part 18 of the FCC Rules. This RFLD device complies with Canadian ICES-005. Operation is subject to the following two conditions: (1) This device may not cause harmful interference, and (2) this device must accept any interference received, including interference that may cause undesired operation.

Limited Warranty

When installed and operated in accordance with package and product instructions, if any component of this product fails within one (1) year from date of purchase of product, Philips will send you a replacement component upon receipt of the returned component, register receipt and proof-of-purchase. Please write to the applicable Philips address below or call our toll free number listed below under “Questions or Comments”. The warranty and remedy set forth herein do not apply to any products or parts thereof which have been subject to misuse, failure to follow Philips’ instructions, neglect, acts of God or accident, inadequate maintenance or incorrect installation. This replacement is the sole remedy available to the extent permitted by local law, and LIABILITY FOR INCIDENTAL OR CONSEQUENTIAL DAMAGE IS HEREBY EXPRESSLY EXCLUDED. THIS LIMITED WARRANTY GIVES YOU SPECIFIC LEGAL RIGHTS AND YOU MAY ALSO HAVE OTHER RIGHTS WHICH VARY FROM STATE TO STATE. All implied warranties, including implied warranties of non-infringement, merchantability and fitness for a particular purpose, are limited in duration to the duration of this express warranty. Because some states do not allow limitations on how long an implied warranty may last, this limitation may not apply to you. Some states do not allow exclusion of incidental or consequential damages, so the above limitation or exclusion may not apply to you. This warranty gives you specific legal rights, and you may also have other rights which vary from state to state.

If your Philips product does not work properly, we advise to consult the instructions for use first. If you cannot find the solution, call our Customer Service number at 1-800-555-0050.

Model: GuideLight White (SFL4131/12)

Philips Lighting Company
200 Franklin Square Drive
Somerset, NJ 08875-6800

Questions or
Comments:
1-800-555-0050

Philips Lighting
281 Hillmount Road
Markham, ON Canada L6C 2S3

Made in China

816734



FPO