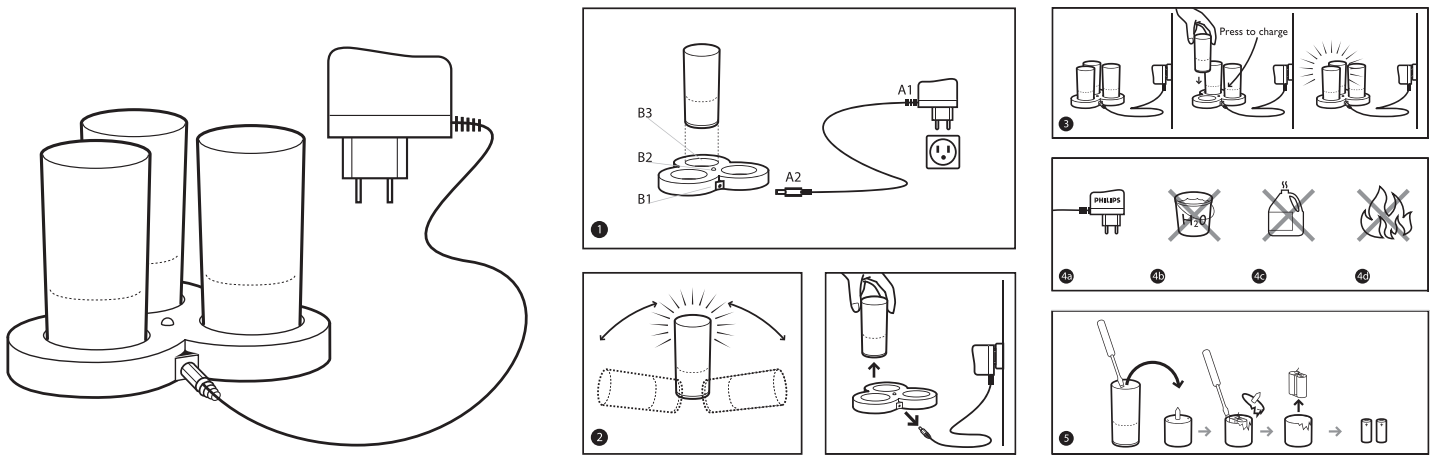


# PHILIPS Imageo CandleLights



## Philips Imageo CandleLights Installation Instructions

### SAVE THESE INSTRUCTIONS

Thank you for buying the Philips Imageo CandleLight set.

By following the instructions you will enjoy the full benefits of the Philips Imageo CandleLight products. Check to make sure the package contains the following items. The set consists of three Candle Lights.

- 3 Imageo Candle Lights
- Adapter
- Charger

This product is intended for household use only.

### OPERATING INSTRUCTIONS

#### Using the Imageo CandleLight Set for the First Time

Before using the IMAGEO CandleLights for the first time, charge them for at least 12 hours until the red indicator LED on charger is off.

Connect the adapter (A1) to the charger (B1) with the DC plug (A2). Then plug the adapter (A1) into a wall socket. The indicator LED (B2) will now be red. Insert up to three Imageo CandleLights (C) in the slots (B3) in the charger. The Ni-MH batteries in the CandleLights are now being charged. After about 12 hours the batteries will be fully charged and the indicator LED switches off. Remove the adapter from the wall socket. The Imageo CandleLights can now be used for approximately 24 hours before recharging.

Some Philips Imageo CandleLights may light up while they are being charged. This depends on the remaining battery current. You can turn the Philips Imageo CandleLight off

simply by removing it from the charger and tilting it ②. See also 'Switching the Philips Imageo CandleLights On and Off'.

#### Switching the Philips Imageo CandleLights On and Off

② To turn on the Philips Imageo CandleLights, simply tilt them. They can be switched off in the same way.

#### Very Important for Repeated Charging

For safety reasons, there is a built-in timer which automatically terminates the charging cycle after 12 hours. The batteries are then fully charged. ③ To re-start the built-in timer and to start the charging cycle again, you push the button on the charging base (press to charge) after which the red light will start to burn and the 12 hour charging cycle starts again.

Under normal circumstances the batteries in the Philips Imageo CandleLights can be charged approximately five hundred times without any loss of capacity. The capacity will then gradually start to decline. The batteries will reach the end of their useful life after being charged roughly a thousand times.

#### Cleaning and Maintenance

Remove the adapter from the wall socket. The adapter (A) and charger (B) can then be cleaned with a dry cloth. The Philips Imageo CandleLights (C) can also be cleaned with a damp cloth. Do not use cleaning agents! The CandleLights should not be placed in the dishwasher.

- 4a Do not use any other adapter than the one that is supplied.
- 4b Do not submerge the individual parts in water.
- 4c Do not use perfumed liquids.
- 4d Do not expose the products to extreme heat.

INSTRUCTIONS PERTAINING  
TO RISK OF FIRE, ELECTRIC SHOCK,  
OR INJURY TO PERSONS

IMPORTANT SAFETY  
INSTRUCTIONS

- Keep the adapter and charger away from liquids and damp locations.
- Do not tamper with the adapter, charger, or Imageo CandleLights.
- Some versions of the Philips Imageo CandleLights are made from real glass and are therefore fragile; do not allow children to play with them.
- Do not use the Philips Imageo CandleLights if they are damaged.
- Use only the adapter that is supplied with the charger. Using a different adapter with the wrong polarity or current can damage your appliance.

WARNING

When using electric appliances, basic precautions should always be followed, including the following:

- a) Read all the instructions before using the unit.
- b) To reduce the risk of injury, close supervision is necessary when an appliance is used near children.
- c) Only use attachments recommended or sold by the manufacturer.
- d) Do not use outdoors.
- e) To reduce the risk of electrical shock, do not put the unit in water or other liquid. Do not place or store appliance where it can fall or be pulled into a tub or sink.
- f) Use only the charger supplied by the manufacturer to recharge.

**NOTE:** This device complies with part 18 of the FCC Rules. This product may cause interference with other devices. If interference occurs, change the location of the products involved. This RFLD device complies with Canadian ICES-005.

Adapter

Model: Switch Mode Power Supply (ECL-PH3-PSUS)  
Input: 100-130 VAC 60/50 Hz 8W  
Output: 12 VDC=500 mA 6VA  
Polarity: -⊙+

Charger

Output: 12V=500mA 6VA  
Polarity: -⊙+

Battery Disposal

The Imageo CandleLights contain rechargeable (Ni-MH) batteries. They cannot be replaced. They should be removed in the manner shown in diagram 5. When disposing of the batteries, take care to follow all state and local recycling rules and regulations.

Limited Warranty

When installed and operated in accordance with package and product instructions, if any component of this product fails within one (1) year from date of purchase of product, Philips will send you a replacement component upon receipt of the returned component, register receipt and proof-of-purchase. Please write to the applicable Philips address below or call our toll free number listed below under “Questions or Comments”. The warranty and remedy set forth herein do not apply to any products or parts thereof which have been subject to misuse, failure to follow Philips’ instructions, neglect, acts of God or accident, inadequate maintenance or incorrect installation. This replacement is the sole remedy available to the extent permitted by local law, and LIABILITY FOR INCIDENTAL OR CONSEQUENTIAL DAMAGE IS HEREBY EXPRESSLY EXCLUDED. THIS LIMITED WARRANTY GIVES YOU SPECIFIC LEGAL RIGHTS AND YOU MAY ALSO HAVE OTHER RIGHTS WHICH VARY FROM STATE TO STATE. All implied warranties, including implied warranties of non-infringement, merchantability and fitness for a particular purpose, are limited in duration to the duration of this express warranty. Because some states do not allow limitations on how long an implied warranty may last, this limitation may not apply to you. Some states do not allow exclusion of incidental or consequential damages, so the above limitation or exclusion may not apply to you. This warranty gives you specific legal rights, and you may also have other rights which vary from state to state.

When the Philips Warranty Does Not Apply

- A defect is caused by extreme circumstances not inherent to the appliance, for example, lightning, flooding, fire, incorrect use or negligence.
- The adapter, charger or Imageo CandleLights have been tampered with.

If your Philips product does not work properly, we advise to consult the instructions for use first. If you cannot find the solution, you can contact Philips per the information below.

Model: Imageo Wht CandleLts 120V 5/1 (SFL4121)

Philips Lighting Company  
200 Franklin Square Drive  
Somerset, NJ 08875-6800

Questions or  
Comments:  
1-800-555-0050

Philips Éclairage  
281 Hillmount Road  
Markham, ON Canada L6C 2S3

Made in China

816746



FPO