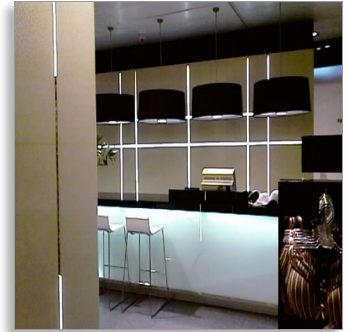




Philips
LightLine

500/840

Flood



871150026845701

Create continuous lines of light

Long life, high brightness

Philips LightLine is a slender, ultra long life lighting system, ideal for creating long lines of continuous light. This easy to install modular system brings exciting design opportunities for architectural and retail lighting applications.

Continuous lines of light

- Create stunning light effects
- Long slim lines of uniform white light
- Accentuate shapes & structures

Perfect solution for narrow spaces

- Easy click & go installation
- Slim profile width of only 17mm and low heat output
- Extreme long life

PHILIPS

sense and simplicity

Specifications

Technical specifications

- Luminous Flux lamp: 280 lm
- Average luminance: 2.0 cd/cm²
- Power consumption: 7.5 W
- Dimensions: 500 mm
- Color temperature: 4000 K

- DC power supply available: 24 V
- Frosted front glass

Packaging

- Quantity: 5
- Includes: mounting brackets and connectors

Highlights

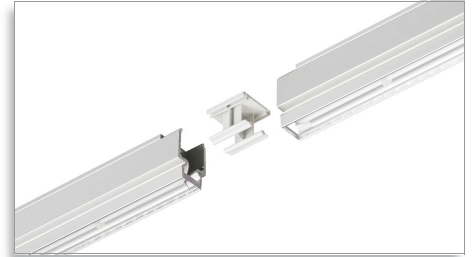
Create stunning light effects

Create stunning light effects without dark spots by simply joining the LightLines together and clicking into place.

Long slim lines of light

The lamp in aluminium housing always gives the same white impression within one profile and between profiles over lifetime.

Easy click & go installation



The package consists of the LightLine profiles, cables, connectors to click the profiles together and mounting brackets. Installation is easy because the whole system simply clicks into place.

Slim profile of only 17mm

The slim profile width of only 17mm and the low heat output means Philips LightLine is the perfect solutions for narrow spaces.

Accentuate shapes & structures

Philips LightLine can be integrated into any lighting scheme to enhance architectural detailing such as coves, walls, stairs and furniture. In retail, this versatile lighting system can be used in cabinets, shelving and point-of-sale units.

Extreme long life

Extreme long life avoids the need for lamp replacements

