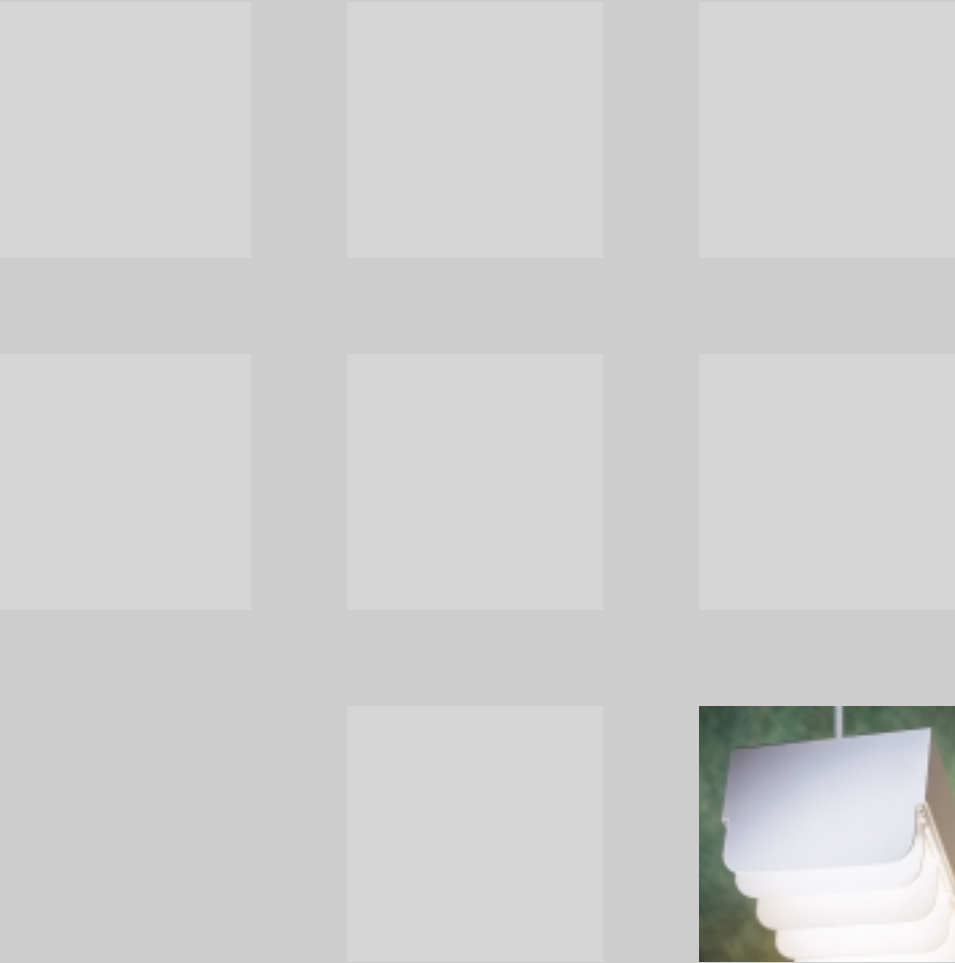




Stacklight

*A powerful stacklight system
with superior performance.*



Ordering Information

(under flap)



Lightolier®
A Genlyte Thomas Company

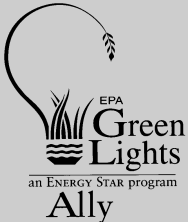
631 Airport Road
Fall River, MA 02720
Phone (508) 679-8131
Fax (508) 674-4710
www.lightolier.com

Lightolier C.F.I.
A Division of Canlyte
525 Educational Road
Cornwall, Ontario
Canada K6H 6C7
Phone (613) 938-6221

© 1999 Lightolier, a Division
of Genlyte Thomas Group LLC.
All rights reserved. Certain
products illustrated in this
catalog may be protected
by applicable patents and
patents pending. Lightolier
will aggressively defend all
of its intellectual property.
We reserve the right to
change details of design,
materials and finishes.

A.I.A. Division 16
Brochure 29118

Printed in the U.S.A.



Stacklight

Lighting Systems

Specifications

How to specify and order

How to Specify

Style	Type
ST	624

How to Order

Style	Length	Type	Ballast & Voltage
ST62	4 4 = 4 foot	J = joiner EJ = end I = individual	E81 = T8 Electronic 120v E82 = T8 Electronic 277v HD1 = T8 PowerSpec HDF Dimming 120v HD2 = T8 PowerSpec HDF Dimming 277v M71 = T8 Electronic Dimming Ballast 120v M72 = T8 Electronic Dimming Ballast 277v
Example: ST624JE82			

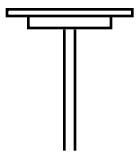
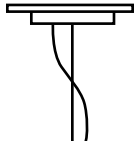
Individual Fixtures

1. Order number of 4' INDIVIDUAL FIXTURES.
2. Order two STEM or CABLE ASSEMBLIES per fixture.

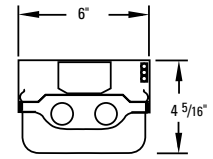
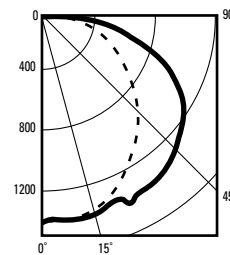
Continuous Rows

1. Determine run length.
2. Order two 4' END FIXTURES per run.
3. Order appropriate number of 4' JOINER FIXTURES to complete the run.
4. Order one STEM or CABLE ASSEMBLY per fixture in the run plus one.

Mountings

	Single Stem – Chrome S12 = 12" OAL S18 = 18" OAL S24 = 24" OAL Note: Add WH for white stem
	Cable Assembly – aircraft cable adjustable up to 36" Single Cable: C36 Single Cable and Cord: CC36 Single Cable and Coiled Cord: CCC36

Stacklight Direct



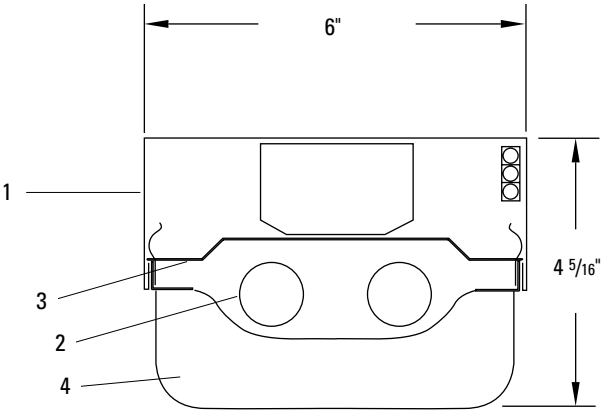
ST624: 2 lamp T8
76.2% efficiency, 0% ^ 100% v

For complete performance data please refer to specification sheets.

Report No. 0034FR


	Coefficients of Utilization			Application Data		
	% Wall Reflectance			Fixture Spacing	Footcandles	Watt/Sq Ft
	50	30	10			
Room Cavity Ratio	0	91	91	50' x 70' x 8.5' Space		
	1	78	74	8' x 8' (64 sq ft/fixture)	147	3.8
	2	68	62	8' x 10' (80 sq ft/fixture)	123	3.2
	3	60	53	12' x 16' x 8.5' Space		
	4	53	46	6' x 8' (48 sq ft/fixture)	141	5.0
	5	47	40	8' x 8' x 8.5' Space		
	6	42	35	8' x 8' (64 sq ft/fixture)	141	5.0
	7	37	31			
	8	34	27			
	9	30	24			
	10	28	21			
80% Ceiling Reflectance				Reflectances: 80% Ceiling, 50% Wall, 20% Floor		
20% Floor Reflectance				Light Loss Factor = .75 (.88 BF x 8.5)		

Specifications




- 1 **Housing:** 20 gauge precision die-formed steel with a 22 gauge precision die-formed steel end plate. No exposed fasteners.
- 2 **Lamping:** Two T8 fluorescent lamps. Provided by others.
- 3 **Reflector:** 22 gauge precision die-formed pre-painted white, minimum reflectance 90%.
- 4 **Louver:** Straight blade die-formed 22 gauge steel. Finished to match housing. Blades on 2" centers.

Electrical




Specify 120 volt or 277 volt. 3 conductor, 12 gauge wire. Color-coded quick connectors allow ease of connection for joiner modules. For special circuiting, consult factory. Rapid start, HPF, class “P” thermally protected. PowerSpec® HDF dimming ballast is available.

Mountings



Cable Suspension (not shown) – 4 1/2" diameter flat canopy finished enamel white, 1/16" diameter stainless steel aircraft cable adjustable up to 36", Adjustable cable gripper with cable adjustment.

Finish



Powder coated baked white enamel. Custom colors available, consult factory.

Options & Accessories

Two circuiting or fusing available, consult factory.

Labels

UL, ULc and IBEW.

For libraries and other environments where strong yet discrete lighting is required, the Stacklight makes a superior choice.

Built-in louvers with precise 2" spacing offer excellent shielding and efficient horizontal illumination. Two T8 fluorescent lamps provide powerful, yet highly economical lighting. The Stacklight utilizes an electronic ballast on all models, an electronic dimming ballast is available if desired.

Designed to be mounted individually or linked in continuous rows. The Stacklight features color-coded quick connectors to assure fast and proper wiring without the removal of any luminaire components. A choice of surface, cable or stem mounting is offered. An adjustable cable device allows adjustment along the entire length of the cable without cutting or crimping. When it comes to bringing high quality illumination to libraries and educational environments, the Stacklight is clearly at the head of the class.

Architectural Profiles

Round

Square

Recessed

Cove

Accent

Custom

Lightolier Lighting Systems

Lightolier Lighting Systems are modular lighting systems that offer a wide selection of geometric shapes, architectural profiles, scales and finishes.

LIGHTOLIER®

LIGHTOLIER®

LIGHTOLIER®