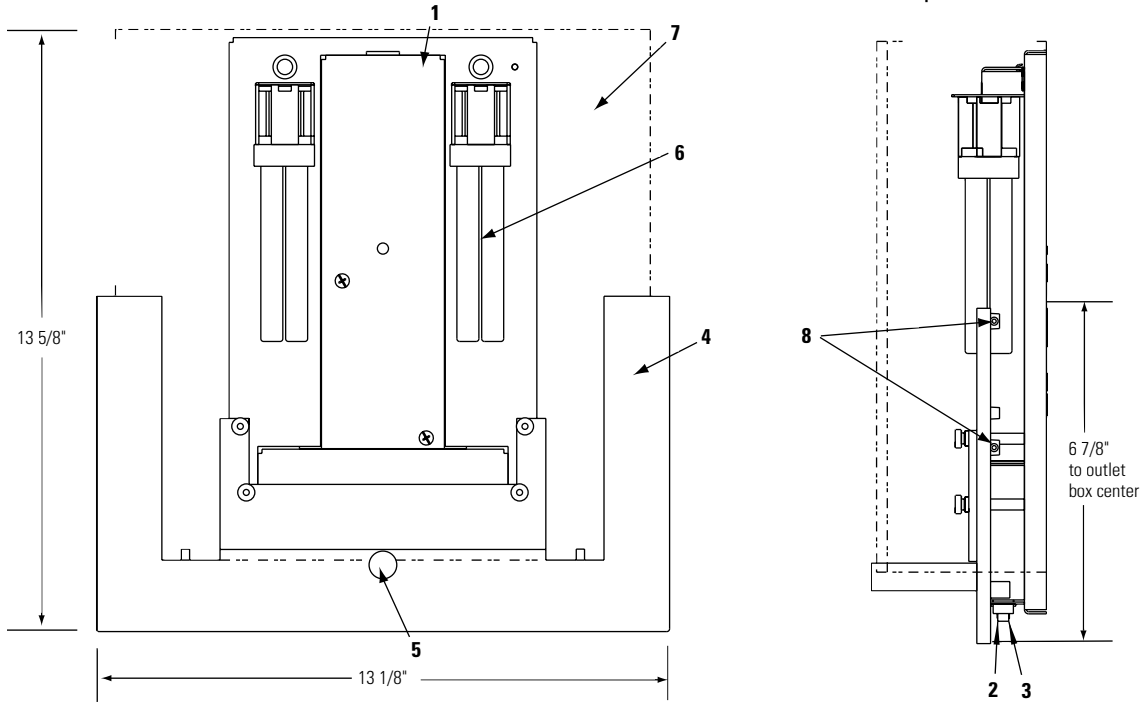


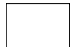


# Specification Decorative BowShield™ 40829UEM



Complete Luminaire consists of Diffuser and Backplate Assembly. Order each separately.

### Diffuser Ordering Information

Cat. No.	Pattern/Description/Color
40871	 Rolled "Rain" pattern texture, Silk-screened White/Clear
40865	 Three Dimensional "Squares" White/Clear Silk-screened Pattern
40862	 "Ceramic White" Silk-screened and Sandblasted

### Backplate Assembly Ordering Information

Cat. No.	Finish	Wattage	Ballast	Recharge Time	Charging Current
40828UEM	Satin Brass	18W	Electronic Universal	24 Hours	280 mA
40829UEM	Satin Brass	18W	Voltage 120V or 277V		

### Features

- Battery Pack:** Provides 90-minute emergency lighting when AC power fails. Fully enclosed, long-life nickel cadmium; Charges from 120 and 277V AC. Meets National Electric and Life Safety Code.
- Test Switch:** Single pole.
- Charging Indicator Light:** LED
- Diffuser Holder:** Die-cast zinc alloy. Satin brass or satin nickel finish with clear lacquer.
- Diffuser Support Peg:** Turned brass. Satin brass or satin nickel finish with clear lacquer.
- Lamps:** Quad tube compact fluorescent, by others. See chart above for wattage and base type.
- Diffuser:** 6mm thick (Max.) Glass. See chart above for options.
- Screw:** Nylon. 8-32. To secure Diffuser

### Mounting

Mounts directly to 4" outlet box or switch box, using wallplate supplied.

### Lumen Output W/Battery Pack

Lamp Types	Watts	Lumens
CF18DT/E/IN/*	18W	575
PL-C18W/*/4P	120v/277v Unv.	2 Lamp
F18D8X/SPX*/4P		

\* Designates manufacturer's color temperature.

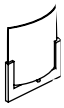
### Labels

UL Listed (For Indoor Dry Locations Only)

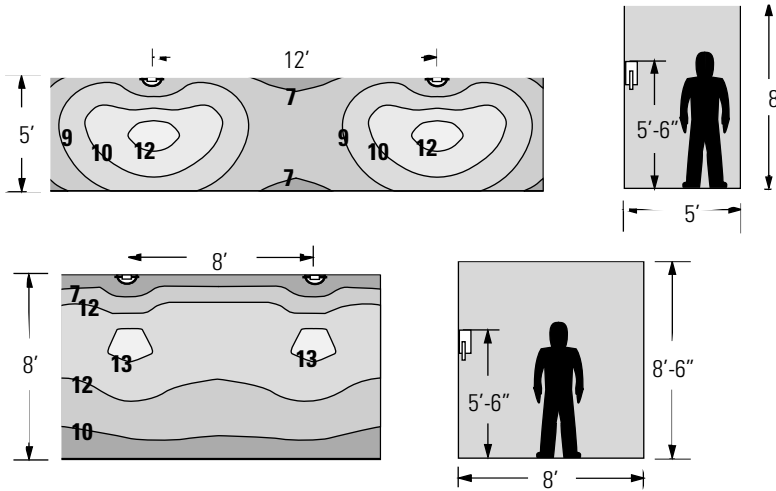
Job Information	Type:
<b>Job Name:</b>	
<b>Cat. No.:</b>	
<b>Lamp(s):</b>	
<b>Notes:</b>	

Lightolier a Genlyte Thomas Company [www.lightolier.com](http://www.lightolier.com)  
 631 Airport Road, Fall River, MA 02720 • (508) 679-8131 • Fax (508) 674-4710  
 We reserve the right to change details of design, materials and finish.  
 © 2002 Genlyte Thomas Group LLC (Lightolier Division) • A0902

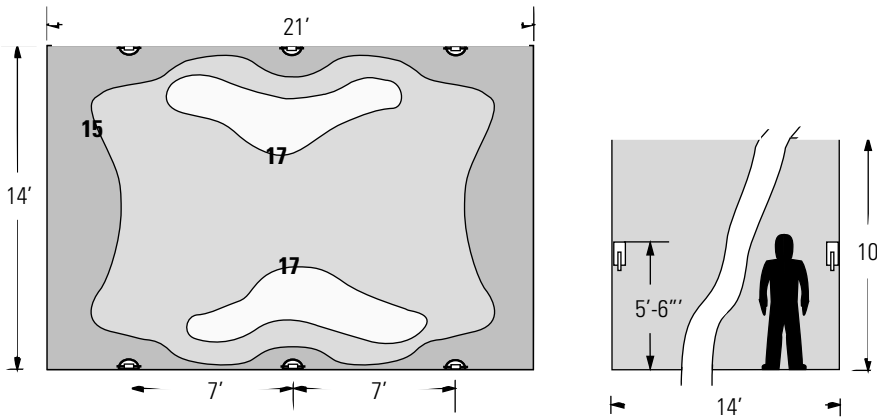
# LIGHTOLIER®



### Hallway / Footcandles



### Vestibule / Conference Room / Footcandles



### Reflectances

80% ceiling / 50% wall / 20% floor  
Footcandles are on floor.

### Multiplier Factors

Data shown is based on an "All White" lightshield.

### Lamp Specification

Lamp	Average Initial Lumens	Average Life Hrs.
18W QT	1250	10,000

### Annual Energy Cost Savings

Compact Fluorescent	vs. Incandescent	24 hrs. / Day	10 hrs. / Day
2 -18W QT	2-60W T10	\$68	\$29 @ 10¢ /KWH

<b>Job Information</b>	<b>Type:</b>
------------------------	--------------

Lightolier a Genlyte Thomas Company [www.lightolier.com](http://www.lightolier.com)  
 631 Airport Road, Fall River, MA 02720 • (508) 679-8131 • Fax (508) 674-4710  
 We reserve the right to change details of design, materials and finish.  
 © 2002 Genlyte Thomas Group LLC (Lightolier Division) • A0902

**LIGHTOLIER®**