

STANDARD STRIP HIGH / VERY HIGH OUTPUT **SD STRIP HO/VO**

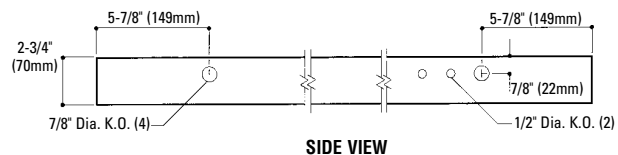
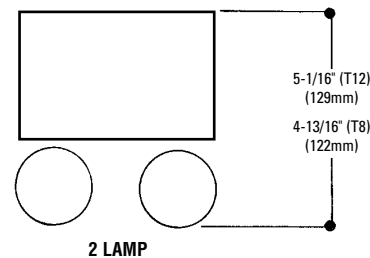
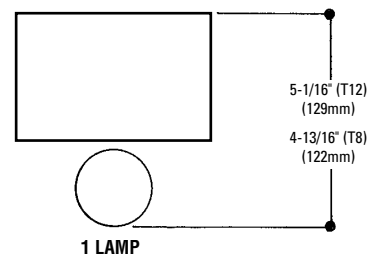
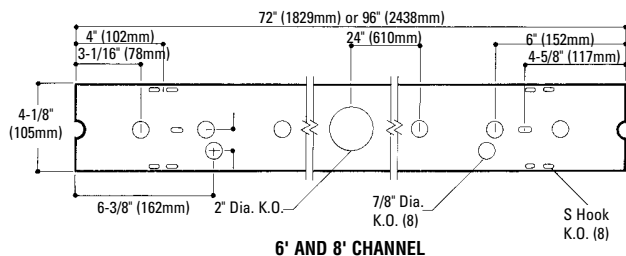
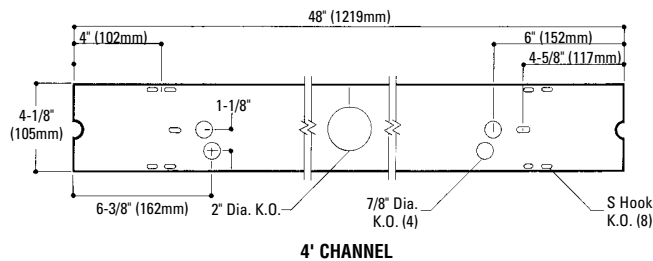
Page 1 of 2 4-1/8" WIDE x 2-3/4" DEEP x 48", 96", 192" LENGTHS, 1 OR 2 LAMP, T8 OR T12, HO OR VHO

Features

- Fixtures suitable for individual, row, surface, or suspension mounting.
- Efficiency 92.3% (T12).
- Quarter turn latch secures channel cover for easy wireway access.
- Heavy duty channel of code gauge die formed steel.
- Fully enclosed wiring.
- UL Listed snap-on end caps.
- Combination end cap for continuous row mounting.
- Green grounding screw installed in channel.
- Lampholders may be individually replaced or rewired.
- T8 (380mA) and T12 (800mA) standard fixtures include ballasts rated for -20°F starting temperature.



DIMENSIONS



Job Information

Type:

Job Name:

Cat. No.:

Lamp(s):

Volts/Ballast:

Lightolier a Genlyte Thomas Company

www.lightolier.com

Technical Information: (978) 657-7600 • Fax (978) 658-0595

631 Airport Road, Fall River, MA 02720 • (508) 679-8131 • Fax (508) 674-4710

We reserve the right to change details of design, materials and finish.

© 2002 Genlyte Thomas Group LLC (Lightolier Division)

A0902

Section 3A/Folio H100-50

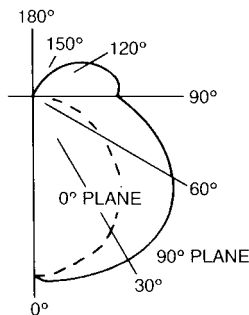
LIGHTOLIER

STANDARD STRIP HIGH / VERY HIGH OUTPUT SD STRIP HO/VO

Page 2 of 2 4-1/8" WIDE x 2-3/4" DEEP x 48", 96", 192" LENGTHS, 1 OR 2 LAMP, T8 OR T12, HO OR VHO

PHOTOMETRY

REPORT NO: G13956P
CATALOG NO:
SD8S296HO120LE
LAMP TYPE: F96 / HO
LUMENS PER LAMP: 8900
TOTAL EFFICIENCY: 92.3%
CIE TYPE: SEMI-DIRECT
SPACING CRITERIA: 1.59
SHIELDING ANGLE: 180



LER = FS - 67.3 Watts - 232 BF - 0.95

Comparative yearly lighting energy cost per 1000 lumens = \$4.00

coefficients of utilization — zonal cavity method (effective floor cavity reflectance 0.20)

RF	20	50	30						
RC	80	80	30						
RW	70	50	30	50	30	10	50	30	10
1	93	88	83	88	84	80	68	66	63
2	84	75	68	79	72	65	58	54	51
3	76	65	57	71	62	54	50	46	41
4	69	57	48	65	54	46	44	39	35
5	63	50	42	59	48	40	39	34	29
6	58	45	36	55	43	35	35	30	25
7	53	40	32	50	39	31	32	26	22
8	49	37	29	47	35	28	29	24	20
9	46	33	26	44	32	25	27	21	17
10	43	31	23	41	29	22	25	19	16

ORDERING INFORMATION Explanation of Catalog Number. Example: SD8S296HO120PGLR

SD STANDARD STRIP HO/VO: 4-1/8" Wide Channel	FIXTURE LENGTH: 4=48" 8=96" 16=192" **2-96" channels	LAMP CONFIGURATION: S=Standard T=4" or 8" Lamps in Tandem (For 8" or 16" units)	NUMBER OF LAMPS IN WIDTH: (By Others) 1=1 Lamp 2=2 Lamp	LAMP WATTS:* 48HO=60w T12, 800mA (4' Length) 86HO=86w T8, 380mA (8' Length) 96HO=110w 800mA (8' Length) 48VO=110w 1500mA (4' Length) 96VO=215w 1500mA (8' Length) *HO and VO units must be suspended a minimum of 1-1/2" from surface.	VOLTAGE: 120 or 277	BALLAST TYPE: 1-1 & 1-2 Lamp Mag. T12 Standard Electro-Magnetic 1-1 & 1-2 Lamp Elec. T8 HO †20THD Instant Start	OPTIONS: Add appropriate suffix to catalog no., ie: (GLR)
						LE P SO†	

OPTIONS & ACCESSORIES

FUSING: Internal fast-blow fusing.
SUFFIX: **GLR**.
Internal slow-blow fusing.
SUFFIX: **GMF**.

FLUORESCENT EMERGENCY

LIGHTING SYSTEM: Factory-installed emergency power battery pack with charger and inverter.
SUFFIX: **EM**.

STEM AND CANOPY SETS: Suspends fixture 6", 12", 18" or 24" from surface. (Four per fixture is recommended.) Catalog Number: **ASC6 CSP** (6"), **ASC12 CSP** (12"), **ASC18 CSP** (18"), **ASC24 CSP** (24")
CANOPY SPACER: Suspends fixture 1-1/2" from surface. Order Catalog Number: **AC1 CSP**.
GROUNDING CONVENIENCE OUTLET: 120 volt only.
SUFFIX: **CO**.

4' WIRE GUARD (WHITE): Specify two for 96" fixtures. Catalog Number: **AWG3W CSP**.
CHAIN HANGING KIT: Includes two 5' heavy duty link chains with sturdy "V" hooks for fixture suspension. Catalog Number: **AH5 CSP**.
TWIST TEE: For exposed T-bar mounting, 1-7/8" deep channel. Catalog Number: **NAH3D CSP**.
HEAVY DUTY COUPLER:
Catalog Number: **NHDC-W CSP**.
SLIDING HANGER: Catalog Number: **NAHD CSP**.



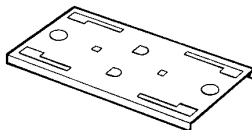
STEM AND CANOPY SET
ASC6 CSP (6")



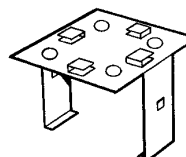
CANOPY SPACER
AC1 CSP



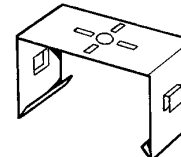
CHAIN HANGING KIT
AH5 CSP



HEAVY DUTY COUPLER
NHDC-W CSP



TWIST TEE
NAH3D CSP



SLIDING HANGER
NAHD CSP

SPECIFICATIONS

MATERIALS: Chassis parts are die-formed heavy gauge cold rolled steel, 4-1/8" channel width.

BALLAST COVER: Code gauge steel secured with quarter turn latch.

FINISH: Chassis exterior-phosphate undercoating, baked white polyester enamel.

ELECTRICAL: Thermally protected class "P" ballast C.B.M. approved, non-PCB. If K.O. is within 3" of ballast, use wire suitable for at least 90°.

Important - High Output (HO) and Very High Output (VO) fixtures must be suspended a minimum of 1-1/2" from surface.

LABELS: I.B.E.W./UL and cUL Listed.

Job Information

Type:

Lightolier a Genlyte Thomas Company

www.lightolier.com

Technical Information: (978) 657-7600 • Fax (978) 658-0595

631 Airport Road, Fall River, MA 02720 • (508) 679-8131 • Fax (508) 674-4710

We reserve the right to change details of design, materials and finish.

© 2002 Genlyte Thomas Group LLC (Lightolier Division)

A0902

Section 3A/Folio H100-50

LIGHTOLIER®