

Ordering Information

Style	Lamps	Length	Type	Wattage	Voltage	Finish
SG	1					
	1 = 1-Lamp T5	4 = 4 Foot 8 = 8 Foot	J = Joiner	28 = 28 watt 54 = 54 watt	1 = 120v 2 = 277v	WH = White Enamel AL = Aluminum Enamel

Complete ordering instructions below.

Features

- Housing:** Extruded aluminum. Die-cast end plate mechanically attached with no exposed fasteners.
- Lamping:** One T5 (28 or 54 watt as specified) fluorescent lamp per 4-foot section. Provided by others.
- Reflector:** Die-formed specular aluminum reflector.
- Shielding:** Die-formed perforated 18 gauge CRS.
- Diffuser:** Translucent acrylic diffuser.
- Louvers:** Straight blade louver finished to match housing.

Electrical

Specify 120 volt or 277 volt. Three conductor, 18 gauge wire. Color-coded quick connectors allow ease of connection for joiner modules. For special circuiting, consult factory. Ballast is class "P" electronic, class "A" sound rating, less than 10% THD, thermally protected, end of lamp life cutoff. Factory installed ballast disconnect allows the ballast to be disconnected from and reconnected to incoming power under load without turning the entire circuit off.

Mountings

Cable suspension - 4-1/2" (11.43cm) diameter canopy finished white enamel, 1/16" (0.16cm) diameter stainless steel aircraft cable adjustable up to 36" (91.44cm). Griplock® with cable adjustment. Draw tight connector create hairline seam between joiner modules.

Finish

Powder coated baked white or aluminum enamel. Custom colors available, consult factory.

Options and Accessories

L, T, X inline joiner blocks and emergency battery pack available.

Labels Included

UL, cUL, and IBEW

Ordering Instructions

Individual Fixtures:

- Order one JOINER MODULE.
- Order one POWER FEED END SET.
- Order one CABLE ASSEMBLY.

Continuous Rows:

- Determine run length.
- Order the appropriate number of JOINER MODULES to complete the run.
- Order one POWER FEED END SET per run.
- Order one CABLE ASSEMBLY per JOINER MODULE.
- Maximum run length for a 2-light cross section, 54watt, 120volt is 88' (26.82m).

Square/Rectangle Patterns:

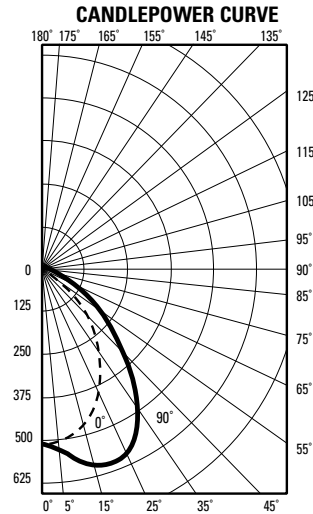
- Order appropriate number of JOINER MODULES to complete the pattern size.
- Order number and type of JOINER BLOCKS required.
- Order one CABLE/CORD ASSEMBLY or POWER FEED END SET to power the pattern.
- For patterns that exceed amperage limits, order the appropriate number of CABLE/CORD FEEDS.

Griplock® is a registered trademark of Reutlinger GripLock Systems.

Job Information	Type:
Job Name:	
Cat. No.:	
Lamp(s):	
Notes:	

631 Airport Road, Fall River, MA 02720 • (508) 679-8131 • Fax (508) 674-4710
 We reserve the right to change details of design, materials and finish.
 www.lightolier.com © 2008 Philips Group • B1008

Performance



REPORT NO: LRL 299-1M
CAT NO: SG141281VWH
LAMPS: 1 F28T5
LUMENS: 2900
EFFICIENCY: 55.0%

ZONE DEG.	CANDLEPOWER				
	22	45	67	90	
	CANDELAS				
180	41	41	41	41	41
175	42	42	42	42	42
165	40	40	42	45	45
155	37	38	46	52	54
145	31	36	49	57	61
135	22	32	47	60	65
125	17	29	50	66	66
115	7	19	44	61	66
105	2	12	45	60	59
95	3	17	51	64	54
90	4	22	55	68	51
85	10	29	63	76	59
75	34	60	88	113	112
65	61	107	111	133	146
55	99	166	206	210	208
45	183	261	307	327	330
35	291	364	420	458	472
25	384	441	515	560	573
15	453	481	537	587	590
5	501	503	511	519	520
0	505	505	505	505	505

COEFFICIENTS OF UTILIZATION

% EFFECTIVE CEILING CAVITY REFLECTANCE

ROOM CAVITY RATIO	WALL REFLECTANCE								
	80			70			50		
	70	50	30	70	50	30	50	30	10
0	63	63	63	61	61	61	56	56	56
1	58	55	53	56	53	51	49	48	46
2	54	50	46	51	48	45	44	42	40
3	50	45	41	48	43	40	40	37	35
4	46	40	36	44	39	35	36	33	31
5	43	36	32	41	35	31	33	30	27
6	40	33	29	38	32	28	30	27	24
7	37	30	26	35	29	25	28	24	22
8	34	28	23	33	27	23	25	22	19
9	32	25	21	31	25	21	23	20	18
10	29	22	18	28	22	18	21	17	15

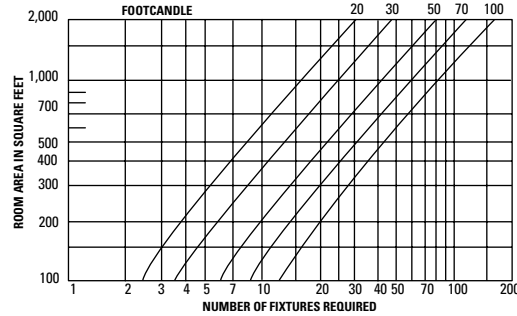
20% FLOOR CAVITY REFLECTANCE

DISTRIBUTION

Zone	Lumens	% Lamp	% Luminaire
0-90	1329	45.8	83.3
90-180	266	9.2	16.7
0-180	1596	55.0	100.0

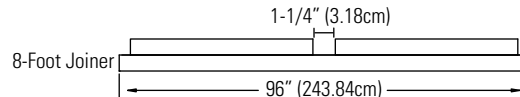
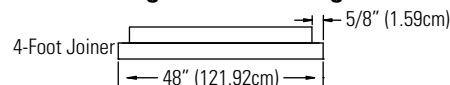
Calculations are for 28 watt T5 lamps, for 54 watt T5 lamps multiply by 1.7

Quick Calculator

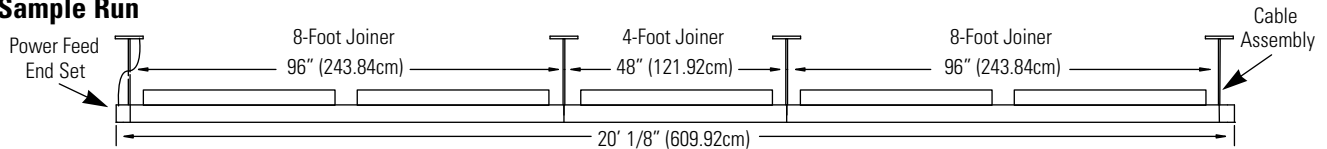


1. Find room area on vertical axis.
2. Move across chart to footcandle curve.
3. Move down to horizontal axis and read number of fixtures required.

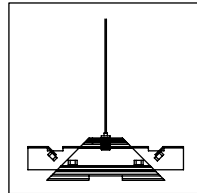
Fixture Lengths & Mounting Locations



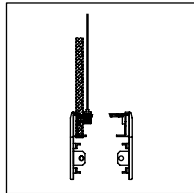
Sample Run



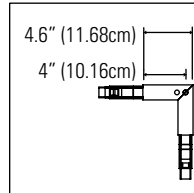
Mounting & Joinder Block Accessories



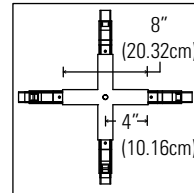
Cable Assembly
SC36



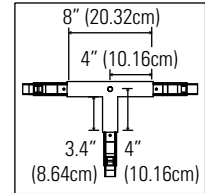
Power Feed End Set
SE36WH (white)
SE36AL (aluminum)



"L" Block with Suspension
SL36WH (white)
SL36AL (aluminum)



"X" Block with Suspension
SX36WH (white)
SX36AL (aluminum)



"T" Block with Suspension
ST36WH (white)
ST36AL (aluminum)

Inline block available (SI36WH or SI36AL).

Job Information Type:

631 Airport Road, Fall River, MA 02720 • (508) 679-8131 • Fax (508) 674-4710
 We reserve the right to change details of design, materials and finish.
 www.lightolier.com © 2008 Philips Group • B1008