

Ordering Information

Style	Lamps	Length	Type	Wattage	Voltage	Finish
SD	2					
	2 = 2-Lamp T5	4 = 4 Foot 8 = 8 Foot	J = Joiner	28 = 28 watt 54 = 54 watt	1 = 120v 2 = 277v	WH = White Enamel AL = Aluminum Enamel

Complete ordering instructions below.

Features

- Housing:** Extruded aluminum. Die-cast end plate mechanically attached with no exposed fasteners.
- Lamping:** Two T5 (28 or 54 watt as specified) fluorescent lamps per 4-foot section. Provided by others.
- Reflector:** Die-formed specular aluminum reflector.
- Shielding:** Die-formed 18 gauge CRS.
- Diffuser:** Translucent acrylic diffuser.

Electrical

Specify 120 volt or 277 volt. Three conductor, 18 gauge wire. Color-coded quick connectors allow ease of connection for joiner modules. For special circuiting, consult factory. Ballast is class "P" electronic, class "A" sound rating, less than 10% THD, thermally protected, end of lamp life cutoff. Factory installed ballast disconnect allows the ballast to be disconnected from and reconnected to incoming power under load without turning the entire circuit off.

Mountings

Cable suspension - 4-1/2" (11.43cm) diameter canopy finished white enamel, 1/16" (0.16cm) diameter stainless steel aircraft cable adjustable up to 36" (91.44cm). Griplock® with cable adjustment. Draw tight connector create hairline seam between joiner modules.

Finish

Powder coated baked white or aluminum enamel.
Custom colors available, consult factory.

Options and Accessories

L, T, X inline joiner blocks and emergency battery pack available.

Labels Included

UL, cUL, and IBEW

Ordering Instructions

Individual Fixtures:

- Order one JOINER MODULE.
- Order one POWER FEED END SET.
- Order one CABLE ASSEMBLY.

Continuous Rows:

- Determine run length.
- Order the appropriate number of JOINER MODULES to complete the run.
- Order one POWER FEED END SET per run.
- Order one CABLE ASSEMBLY per JOINER MODULE.
- Maximum run length for a 2-light cross section, 54watt, 120volt is 88' (26.82m).

Square/Rectangle Patterns:

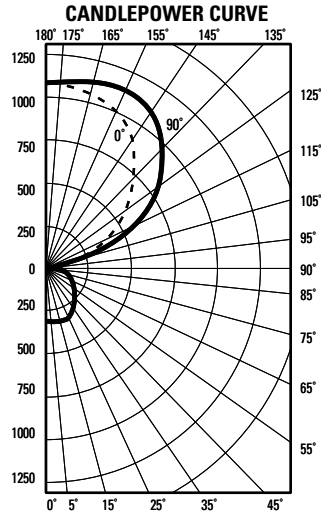
- Order appropriate number of JOINER MODULES to complete the pattern size.
- Order number and type of JOINER BLOCKS required.
- Order one CABLE/CORD ASSEMBLY or POWER FEED END SET to power the pattern.
- For patterns that exceed amperage limits, order the appropriate number of CABLE/CORD FEEDS.

Griplock® is a registered trademark of Reutlinger GripLock Systems.

Job Information	Type:
Job Name:	
Cat. No.:	
Lamp(s):	
Notes:	

631 Airport Road, Fall River, MA 02720 • (508) 679-8131 • Fax (508) 674-4710
We reserve the right to change details of design, materials and finish.
www.lightolier.com © 2008 Philips Group • B1008

Performance



REPORT NO: LRL 299-1F
CAT NO: SD241281VH
LAMPS: 2 F28T5
LUMENS: 2900
EFFICIENCY: 82.2%

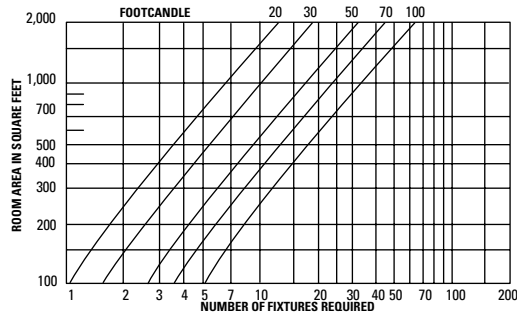
ZONE DEG.	CANDLEPOWER				
	0	22	45	67	90
		CANDLELAS			
180	1091	1091	1091	1091	1091
175	1088	1089	1094	1096	1097
165	1051	1081	1104	1117	1111
155	1006	1029	1097	1128	1142
145	890	942	1059	1097	1112
135	732	810	885	967	974
125	582	688	781	823	780
115	389	513	555	549	536
105	219	314	284	270	256
95	47	71	71	73	75
90	10	29	47	58	61
85	21	46	64	76	80
75	71	83	102	117	120
65	113	112	125	139	143
55	173	172	166	119	172
45	204	210	201	198	198
35	243	246	247	238	239
25	269	270	272	272	272
15	281	284	286	286	282
5	286	286	289	287	287
0	286	286	286	286	286

		COEFFICIENTS OF UTILIZATION								
		% EFFECTIVE CEILING CAVITY REFLECTANCE								
		80			70			50		
		WALL REFLECTANCE								
		70	50	30	70	50	30	50	30	10
ROOM CAVITY RATIO	0	82	82	82	73	73	73	55	55	55
	1	75	71	68	66	63	60	48	46	44
	2	68	62	57	60	55	51	42	39	37
	3	62	54	49	54	48	43	37	33	31
	4	57	48	42	50	43	37	32	29	26
	5	52	43	36	45	38	32	29	25	22
	6	47	38	32	42	34	28	26	22	19
	7	44	34	28	38	30	25	23	19	17
	8	40	31	25	36	27	22	21	17	15
	9	37	28	22	33	25	20	19	15	13
	10	35	25	19	31	22	17	17	14	11

20% FLOOR CAVITY REFLECTANCE			
DISTRIBUTION			
Zone	Lumens	% Lamp	% Luminaire
0-90	979	16.9	20.5
90-180	3790	65.3	79.5
0-180	4769	82.2	100.0

Calculations are for 28 watt T5 lamps, for 54 watt T5 lamps multiply by 1.7

Quick Calculator and Ceiling Brightness

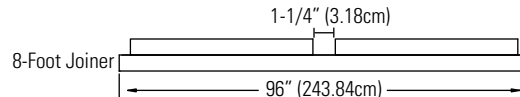
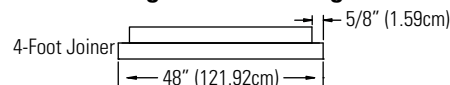


1. Find room area on vertical axis.
2. Move across chart to footcandle curve.
3. Move down to horizontal axis and read number of fixtures required.

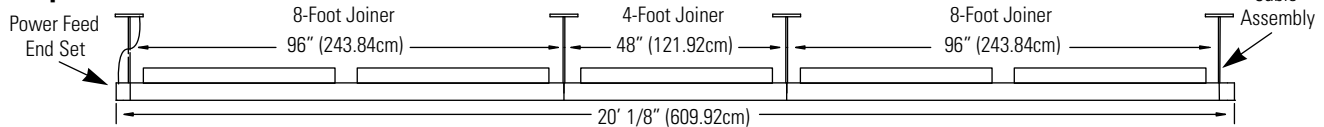
Suspension Length	12"	18"	24"
Footlamberts Above Fixture	209	143	110
Footlamberts Between Fixtures	20.7	21.1	23.9
Ceiling Brightness Ratio	10.1	6.8	4.6

Reflectances of 80% ceiling, 50% walls and 20% floor. Light loss factor is .85, Room size is 50' x 50', Run Spacing 10'. Ceiling Height 9' to 12'. Values are taken from the center of the room.

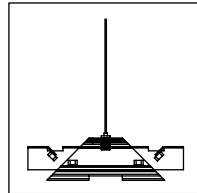
Fixture Lengths & Mounting Locations



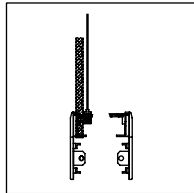
Sample Run



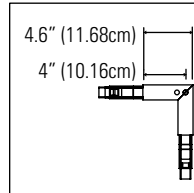
Mounting & Joiner Block Accessories



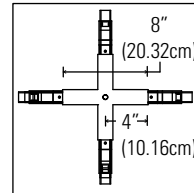
Cable Assembly
SC36



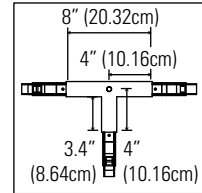
Power Feed End Set
SE36WH (white)
SE36AL (aluminum)



"L" Block with Suspension
SL36WH (white)
SL36AL (aluminum)



"X" Block with Suspension
SX36WH (white)
SX36AL (aluminum)



"T" Block with Suspension
ST36WH (white)
ST36AL (aluminum)

Inline block available (SI36WH or SI36AL).

Job Information Type:

631 Airport Road, Fall River, MA 02720 • (508) 679-8131 • Fax (508) 674-4710
 We reserve the right to change details of design, materials and finish.
 www.lightolier.com © 2008 Philips Group • B1008