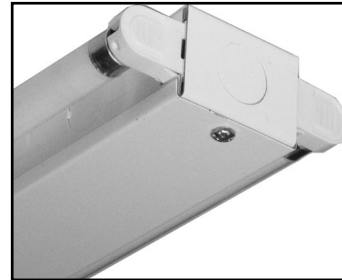
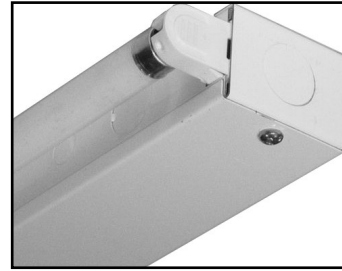


Sidemount Strip T5 **SM T5 Strip**

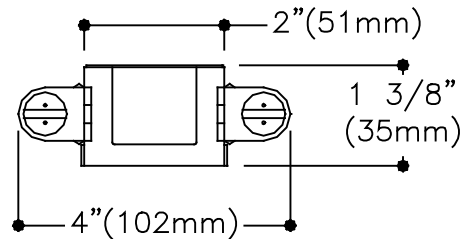
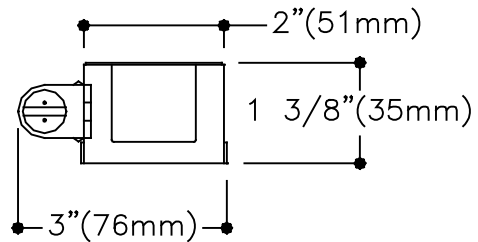
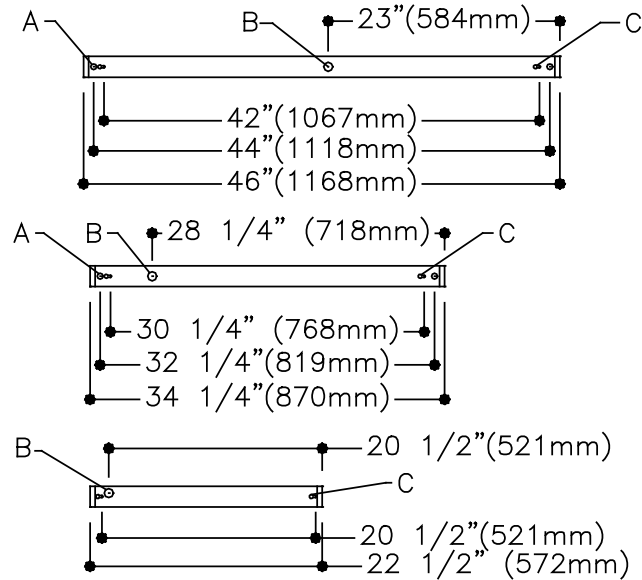
Features

- Only 1 3/8" deep.
- Utilizes compact, high efficiency, T5 or T5HO lamps.
- Fully enclosed wiring.
- Convenience outlet and switch K.O.s provided (1 lamp only).
- Push through lamp holders with rotor for secure lamp retention.



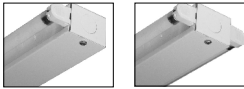
Dimensions

A: 9/16"(14mm) K.O.
 B: 7/8"(22mm) K.O.
 C: CARRIAGE SLOT



Job Information	Type:
Job Name:	
Cat. No.:	
Lamp(s):	
Volts/Ballast:	

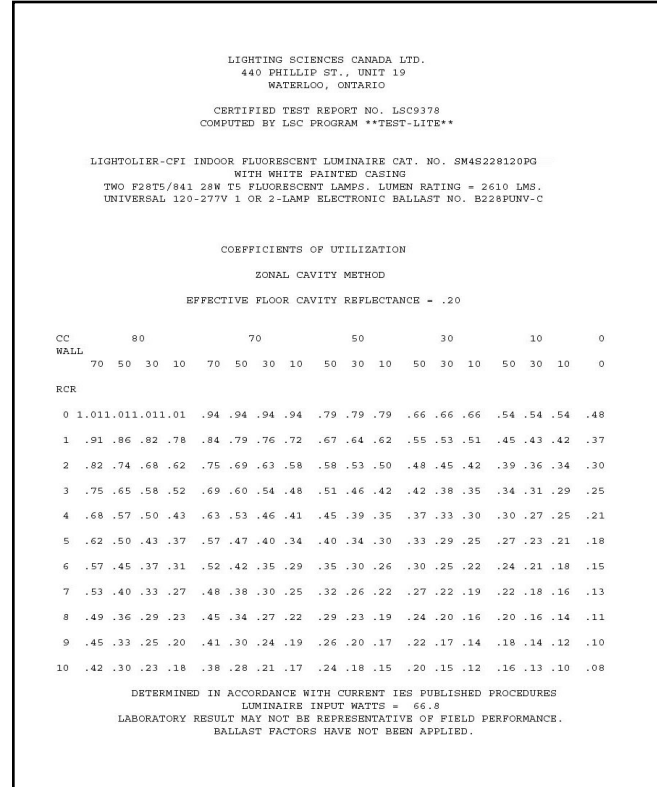
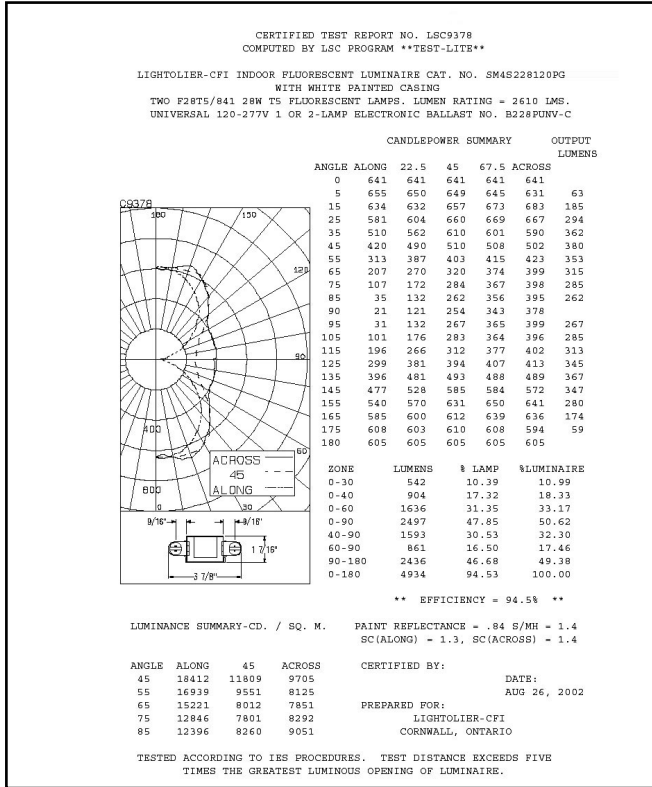
Lightolier a Genlyte Thomas Company www.lightolier.com
 Technical Information: (978) 657-7600 • Fax (978) 658-0595
 631 Airport Road, Fall River, MA 02720 • (508) 679-8131 • Fax (508) 674-4710
 We reserve the right to change details of design, materials and finish.
 Copyright 2002 Lightolier **Section 3A/Folio H120-18**



Sidemount Strip T5 **SM T5 Strip**

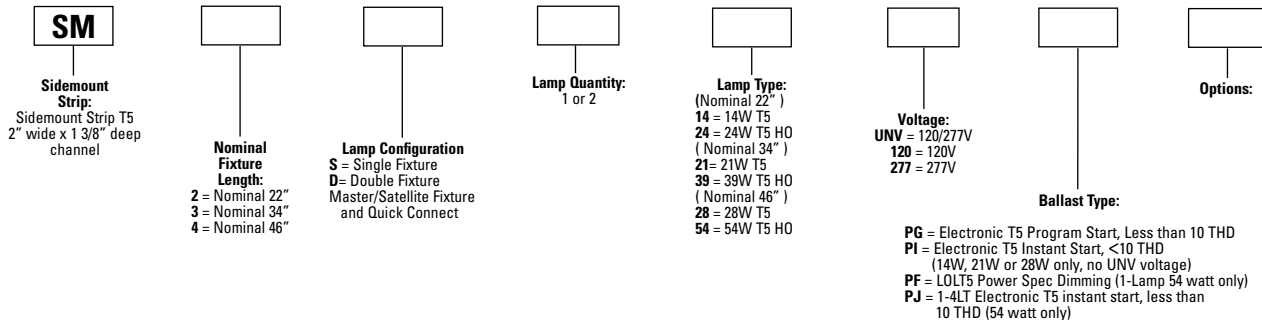
Photometry

Model No. SM4S228120PG



Ordering Information

Explanation of Catalog Number. Example: SM4S228120PG



Options & Accessories

Radio Interference Filter: 120, 277 or 50 or 60 Hz. Suffix: R.

Ballast Options: For other ballast options, consult factory.

Specifications

Materials: Chassis parts are die-formed heavy gauge cold rolled steel, 1-3/8" deep x 2" channel width.

Finish: Chassis exterior - phosphate undercoating, baked white acrylic matte high reflectance paint finish.

Electrical: Rapid start HPF, thermally protected class "P" ballast (Bi- tube type). If K.O. are within 3' of ballast, use wire suitable for at least 90°.

Labels: Listed by



Job Information

Type:

Lightolier a Genlyte Thomas Company

www.lightolier.com

Technical Information: (978) 657-7600 • Fax (978) 658-0595

631 Airport Road, Fall River, MA 02720 • (508) 679-8131 • Fax (508) 674-4710

We reserve the right to change details of design, materials and finish.

Copyright 2002 Lightolier

Section 3A/Folio H120-18

LIGHTOLIER