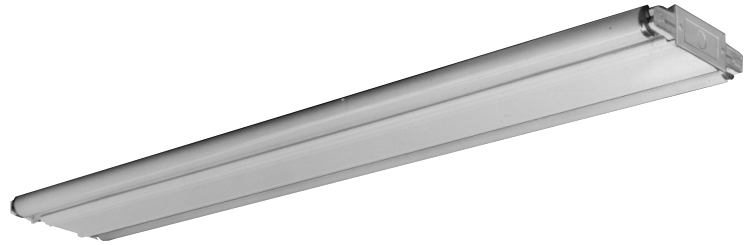


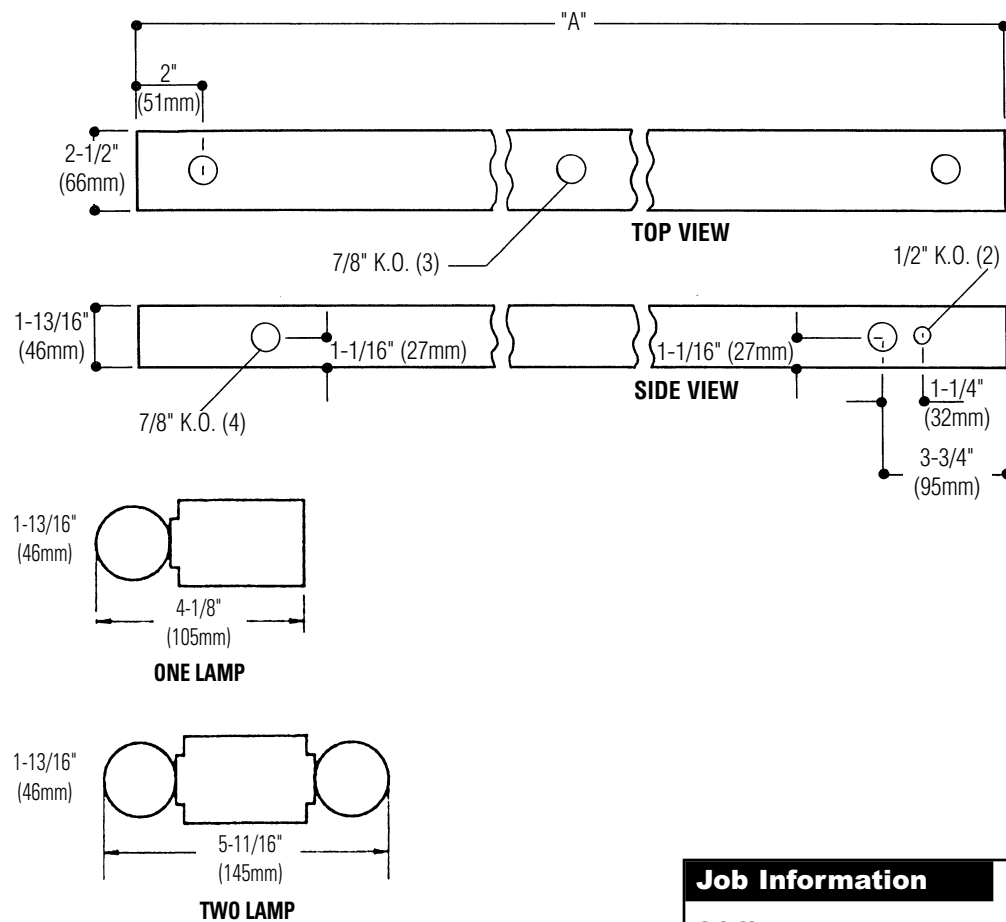
# Sidemount Strip **SM STRIP**

## Features

- Only 1-13/16" deep.
- Efficiency 95.8%..
- Ballast cover secured by quarter-turn latches.
- Fully enclosed wiring.
- May be surface mounted or suspended.
- May be continuous row mounted.
- Code gauge, heavy duty, die formed steel channel.
- Multiple knockouts for convenient installation.
- Lampholders may be individually replaced or rewired.
- High reflectance baked white enamel finish.
- UL Listed for damp locations.



## Dimensions



DIMENSIONS		
"A"		
Channel Length	Inches	(mm)
2' Channel	24"	(610 mm)
3' Channel	36"	(914 mm)
4' Channel	48"	(1219 mm)

Job Information	Type:
<b>Job Name:</b>	
<b>Cat. No.:</b>	
<b>Lamp(s):</b>	
<b>Volts/Ballast:</b>	

Lightolier a Genlyte Thomas Company [www.lightolier.com](http://www.lightolier.com)  
 Technical Information: (978) 657-7600 • Fax (978) 658-0595  
 631 Airport Road, Fall River, MA 02720 • (508) 679-8131 • Fax (508) 674-4710  
 We reserve the right to change details of design, materials and finish.  
 © 2002 Genlyte Thomas Group LLC (Lightolier Division)  
 A0902 **Section 3A/Folio H120-15**

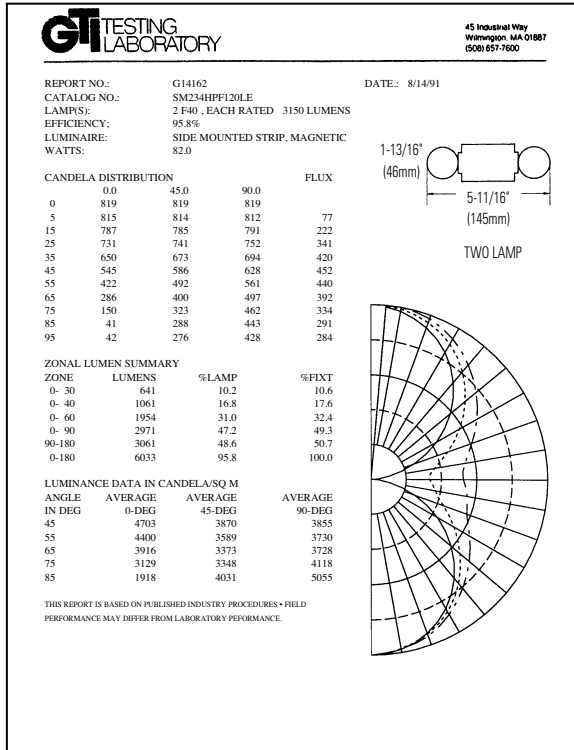
**LIGHTOLIER®**



# Sidemount Strip **SM STRIP**

## PHOTOMETRY MODEL NO. SM234HPF120LE

LER = FS - 69.9 Watts - 82 BF - 0.95  
Comparative yearly lighting energy cost per 1000 lumens = \$3.43



### coefficients of utilization — zonal cavity method

	20			30			40		
	RF	RC	RW	RF	RC	RW	RF	RC	RW
room cavity ratio	1	2	3	4	5	6	7	8	9
	92	83	75	87	75	65	82	67	57
	67	64	61	55	53	51	55	53	51
	57	53	49	47	44	41	47	44	41
	50	45	41	41	37	34	41	37	34
	44	39	34	36	32	29	36	32	29
	39	34	29	32	28	25	32	28	25
	35	30	25	29	25	21	29	25	21
	32	26	22	26	22	19	26	22	19
	29	23	19	24	20	17	24	20	17
	27	21	17	22	18	15	22	18	15
	24	19	16	20	16	13	20	16	13

## ORDERING INFORMATION Explanation of Catalog Number. Example: SM234HPF120LEGLR

<b>SM</b> SIDEMOUNT STRIP	<b>LAMP QUANTITY:</b> 1 or 2 Lamp	<b>LAMP:</b> (By Others) 17=(T8), 2' Length 20=T12, 2' Length 25=T8, 3' Length 30=T12, 3' Length 32=T8, 4' Length 34=T12, 4' Length	<b>BALLAST TYPE:</b> LPF=Low Power Factor HPF=High Power Factor	<b>VOLTAGE:</b> 120 or 277	<b>BALLAST:</b> 1 or 2 Lamp Mag. (T12) LE Standard Electro Magnetic (20 or 30 watts only) 1 or 2 Lamp Elec. (T8) SO* HI* LOL Dimming (T8) PS - *Instant Start Standard Other dimming options. Consult factory.	<b>OPTIONS:</b> Add appropriate suffix to catalog no., ie: (GLR)
------------------------------	--------------------------------------	--	---	-------------------------------	--	---

### OPTIONS & ACCESSORIES

- FUSING:** Internal fast-blow fusing. SUFFIX: **GLR**. Internal slow-blow fusing. SUFFIX: **GMF**.
- ELECTRICAL/WIRING OPTIONS:** Consult factory.
- RADIO INTERFERENCE FILTER:** 120 or 277 volt, 50 or 60 Hz. One per fixture. SUFFIX: **RF**.
- STEM AND CANOPY SETS:** Suspends fixture 6", 12", 18" or 24" from surface. Catalog Number: **ASC6 CSP** (6"), **ASC12 CSP** (12"), **ASC18 CSP** (18"), **ASC24 CSP** (24").

### SPECIFICATIONS:

- MATERIALS:** Chassis parts are die-formed code gauge cold rolled steel, 1-13/16" deep x 2-1/2" channel width.
- BALLAST:** Cover—code gauge cold rolled steel, secured by quarter-turn latches.
- FINISH:** Chassis exterior—baked white polyester enamel, minimum reflectance 86%.
- ELECTRICAL:** Thermally protected class "P" ballast C.B.M. approved, non PCB. If K.O. is within 3" of ballast, use wire suitable for at least 90°.
- LABELS:** I.B.E.W./UL and ULc Listed.

### Job Information Type:

Lightolier a Genlyte Thomas Company www.lightolier.com  
Technical Information: (978) 657-7600 • Fax (978) 658-0595  
631 Airport Road, Fall River, MA 02720 • (508) 679-8131 • Fax (508) 674-4710  
We reserve the right to change details of design, materials and finish.  
© 2002 Genlyte Thomas Group LLC (Lightolier Division)  
A0902 **Section 3A/Folio H120-15**

**LIGHTOLIER**