

Cleanguard Class 1,000/10,000 Clean Room **CXSW SERIES**

Page 1 of 2

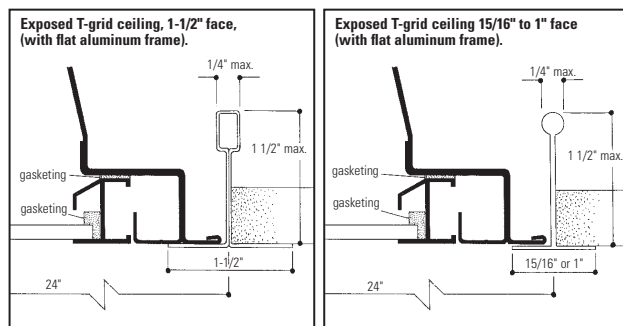
Recessed Fluorescent, 2x2, for 15/16" to 1-1/2" wide face T-bar
2 or 3 Lamp

Features

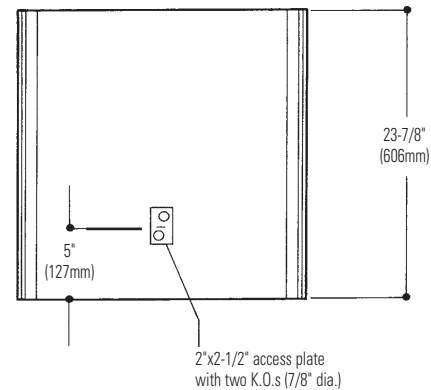
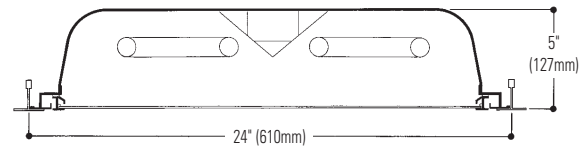
- Meets requirements for Federal Standard 209E Class 1,000/10,000 & 100,000 Clean Room tested by Independent Lab.
- UL and ULc Listed for wet or damp locations for covered ceiling use.
- Fits 15/16" to 1-1/2" wide face grid ceiling systems. Contractor responsible for sealing fixture to ceiling.
- Full perimeter gasketing (closed cell Neoprene) between door frame and lens, closed cell ethafoam gasketing between housing and door frame.
- Ends sealed to body.
- .125 pattern 12 lens installed smooth side down.
- Door frame is post painted, baked acrylic enamel.
- Hemmed over side rails for maximum safety.
- Spring loaded rooster head latches.
- 18 gauge steel hinges.
- Flat extruded aluminum door.



Mounting Methods



Dimensions



Job Information

Type:

Job Name:

Cat. No.:

Lamp(s):

Volts/Ballast:

Lightolier a Genlyte Thomas Company

www.lightolier.com

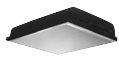
Technical Information: (978) 657-7600 • Fax (978) 658-0595

631 Airport Road, Fall River, MA 02720 • (508) 679-8131 • Fax (508) 674-4710

We reserve the right to change details of design, materials and finish.

Copyright 2004 Lightolier

Section 6/Folio N40-14



Photometry

Model No. CXS2WFAVI26U120S0

LER = FP - 56.0 IW - 53.7 BF - 0.87
Comparative yearly lighting energy cost per 1000 lumens = \$4.24

GI TESTING LABORATORY
45 Industrial Way
Wilmington, MA 01887
(978) 657-7600

REPORT NO.: G02023 DATE: 02-04-02
CATALOG NO.: CXS2WFAVI26U120S0
LAMP (S): 2 T8 1/8", EACH RATED 2750 LUMENS
LUMINAIRE: FIXTURE WITH FS FRAME AND INVERTED LENS
HOWARD INDUSTRIES E2/32IS-120SC
0.45 AMPS 53.7 WATTS

CANDELA DISTRIBUTION

ANGLE	0.0	22.5	45.0	67.5	90.0
0	1361	1361	1361	1361	1361
5	1349	1349	1349	1352	1352
15	1287	1272	1280	1288	1291
25	1130	1140	1162	1175	1179
35	962	977	1003	1020	1028
45	770	785	813	828	834
55	574	590	611	624	631
65	376	390	403	419	426
75	185	193	197	208	212
85	36	39	37	40	40
90	0	0	0	0	0

ZONAL LUMEN SUMMARY

ZONE	LUMENS	%LAMP	%FIXT
0-30	1023	18.6	29.5
0-40	1648	30.0	47.5
0-60	2814	51.2	81.1
0-90	3471	63.1	100.0
90-180	0	0.0	0.0
0-180	3471	63.1	100.0

TOTAL LUMINAIRE EFFICIENCY = 63.1 %
TOTAL REFLECTANCE OF PAINT = 90.0 %
CIE TYPE - DIRECT

PLANE : 0-DEG 90-DEG
SPACING CRITERIA : 1.2 1.2
PLANE : 0-DEG 90-DEG
LUMINOUS LENGTH : 21.960 21.960

LUMINANCE DATA IN CANDELA/SQ M

ANGLE	AVERAGE	AVERAGE	AVERAGE
IN DEG	0-DEG	45-DEG	90-DEG
45	3499.	3594.	3790.
55	3215.	3423.	3535.
65	2859.	3064.	3239.
75	2297.	2446.	2632.
85	1327.	1364.	1475.

THIS REPORT IS BASED ON PUBLISHED INDUSTRY PROCEDURES • FIELD PERFORMANCE MAY VARY FROM LABORATORY PERFORMANCE.

coefficients of utilization — zonal cavity method

RF	20			20			20			
RC	80			50			30			
RW	70	50	30	50	30	10	50	30	10	
room cavity ratio	1	69	66	63	62	60	58	59	58	56
2	63	58	54	54	51	48	52	50	47	
3	57	51	46	48	44	41	46	43	40	
4	53	45	40	43	38	35	41	38	34	
5	48	41	35	38	34	30	37	33	30	
6	45	37	31	35	30	27	34	30	26	
7	42	33	28	32	27	24	31	27	23	
8	39	30	25	29	24	21	28	24	21	
9	36	28	23	27	22	19	26	22	19	
10	34	26	21	25	20	17	24	20	17	

Ordering Information

Explanation of Catalog Number. Example: CXS2WFAVI26U120S0GLR

CX Cleanguard Clean Room: Class 1,000, 10,000 or 100,000 Clean Room	S Static	2 Fixture Width	W Ceiling Type: W = Grid 15/16" to 1-1/2" face (lay in T-bar)	FA Lens Frame: FA = Flat aluminum frame	VI Lens Shielding Type: VI (virgin acrylic). 125 standard. For options consult factory. Smooth side of lens towards room.	Lamp Quantity: 2= 2 Lamp 3= 3 Lamp	Lamp Fixture Length: 2U = T8, 1-5/8" U Lamp 17 = T8, 2' Lamp 6U = 6" U Lamp (T8) (2 Lamp Only) FT = Twin Tube (T5) (Nominal 24")	Voltage: 120 or 277	Ballast Type: <20THD <10THD 1-1 & 1-2 Lamp Elec. T8 SO* HI* 1-3 Lamp Elec. T8 O3* H3* 1-1 & 1-2 Lamp Elec. TT5 SB* IB* (40 Watt) 1-3 Lamp Elec. TT5 X3* I3* LOL T8 Dimming PS - LOL TT5 Dimming PB -	Options: Add appropriate suffix to catalog no, ie: (GLR)
---	--------------------	---------------------------	---	---	---	---	--	-------------------------------	---	--

Options & Accessories

Fusing: Internal fast-blow fusing. Suffix: **GLR**.
Internal slow-blow fusing. Suffix: **GMF**.

Electrical/Wiring Options: Consult factory.

Specifications

Materials: Chassis parts are die-formed code gauge cold rolled steel. Housing with side rails hemmed over and housing ends turned-in for safe handling.

Finish: Chassis exterior—black baked polyester enamel. Cavity—white baked polyester enamel minimum 86% reflectance. Phosphate undercoating.

Lenses: VI (standard extruded virgin acrylic, 3/16" square based female cones, running 45° to the panel edge, .125" nominal thickness (pattern 12) installed smooth side down.

Electrical: Thermally protected class "P" ballast C.B.M. approved, non PCB. If K.O. is within 3" of ballast, use wire suitable for at least 90°.

Labels: I.B.E.W./UL and ULc listed.

Job Information

Type:

Lightolier a Genlyte Thomas Company www.lightolier.com
Technical Information: (978) 657-7600 • Fax (978) 658-0595
631 Airport Road, Fall River, MA 02720 • (508) 679-8131 • Fax (508) 674-4710
We reserve the right to change details of design, materials and finish.
Copyright 2004 Lightolier Section 6/Folio N40-14

LIGHTOLIER®