

ALTER SOFT LIGHTS QVH2GPFOS2FT

2'x2' SLIM SEMI-RECESSED DIRECT/INDIRECT FLUORESCENT
2 LAMP, TT5 BI-TUBE, 2 1/4" RECESSED CEILING DEPTH
MICROPERFORATED MESH LAMP SHIELD, STATIC

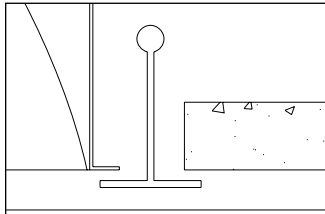
Features

- Efficiency 52.6%.
- Shallow plenum depth.
- Swing down microperforated lamp shields for easy relamping and maintenance.
- Alter soft white film on inside of mesh conceals lamp image and provide balance between reflected light and direct light.
- 95% Reflective Alter soft white paint finish.
- Specular interior reflector.
- One piece body for easy installation.
- Easy access to ballast through lamp compartment.
- Fits standard T-Grid ceilings.
- Optional acrylic drop-down visual element
- Slim Semi-Recess and Slim Surface luminaires have the same photometric performance data.

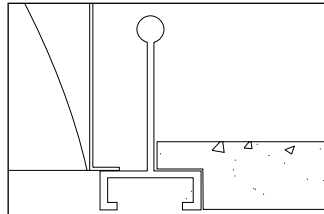


Mounting Methods / Features

Ceiling compatibility



Suited to standard exposed T-grid ceilings

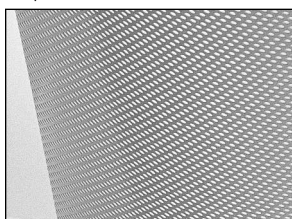


Suited to standard exposed Slot T-grid ceilings

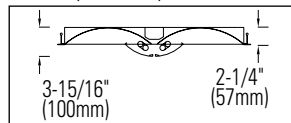
Swing down optical system for easy relamping and maintenance



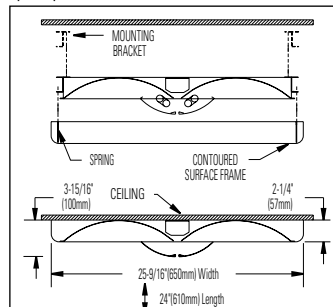
Microperforated mesh lamp shields



Shallow plenum depth

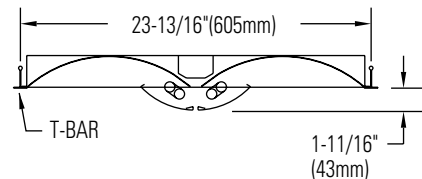
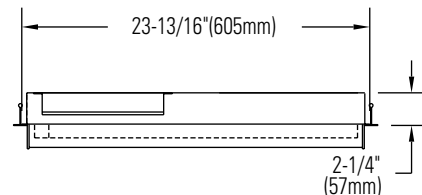


Slim Surface
qvf2spfos2FT



Slim Surface and Slim Semi-Recessed have the same photometric performance data.

Dimensions



Job Information

Type:

Job Name:

Cat. No.:

Lamp(s):

Volts/Ballast:

Lightolier a Genlyte Thomas Company

www.lightolier.com

Technical Information: (978) 657-7600 • Fax (978) 658-0595

631 Airport Road, Fall River, MA 02720 • (508) 679-8131 • Fax (508) 674-4710

We reserve the right to change details of design, materials and finish.

© 2002 Genlyte Thomas Group LLC (Lightolier Division)

A0902

Section 5 / Folio L85-10

LIGHTOLIER®

ALTER SOFT LIGHTS QVH2GPFOS2FT

2'x2' SLIM SEMI-RECESSED DIRECT/INDIRECT FLUORESCENT
2 LAMP, TT5 BI-TUBE, 2 1/4" RECESSED CEILING DEPTH
MICROPERFORATED MESH LAMP SHIELD, STATIC

Photometry*

