

ALTER SOFT LIGHTS **QVT1SPFOS217**

1'x2' SURFACE/WALL DIRECT/INDIRECT FLUORESCENT
2 LAMP, T8, 4 1/2" DEEP
MICROPERFORATED MESH LAMP SHIELD

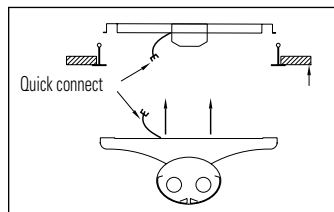
Features

- Efficiency 42.6%.
- Oval end cap extends 7/16" beyond luminaire reflector providing a soft spill of light on luminaire end.
- Swing down microperforated lamp shields for easy relamping and maintenance.
- Alter soft white film on inside of mesh conceals lamp image providing balance between reflected and direct light.
- 95% Reflective Alter soft white paint finish.
- All luminaire surfaces have the same visual appearance.
- Easy access to ballast through reflector compartment.
- Easy installation into standard T-Grid ceiling, drywall ceiling or wall mount.

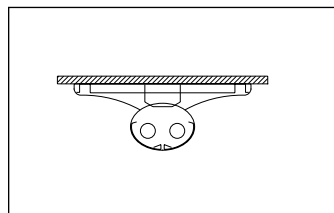


Mounting Methods / Features

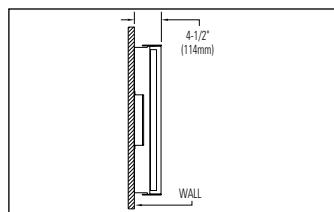
Luminaire mounts in one of three configurations



Shallow plenum
semi-recessed T-Bar



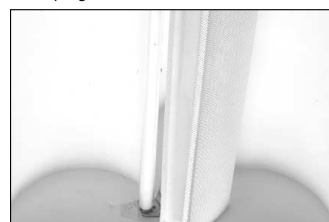
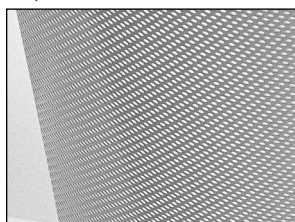
Flush mount directly
to drywall ceiling



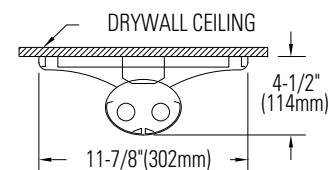
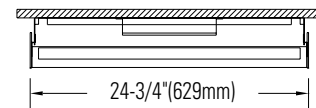
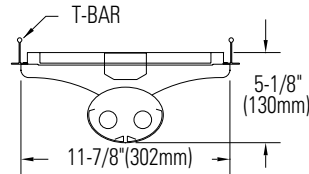
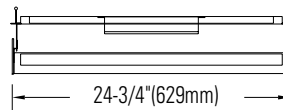
Wall mount

Microperforated mesh
lamp shields

Swing down optical system for easy
relamping and maintenance



Dimensions



Job Information

Type:

Job Name:

Cat. No.:

Lamp(s):

Volts/Ballast:

Lightolier a Genlyte Thomas Company www.lightolier.com
 Technical Information: (978) 657-7600 • Fax (978) 658-0595
 631 Airport Road, Fall River, MA 02720 • (508) 679-8131 • Fax (508) 674-4710
 We reserve the right to change details of design, materials and finish.
 © 2002 Genlyte Thomas Group LLC (Lightolier Division)
 A0902 **Section 5 / Folio L60-10**

LIGHTOLIER®

Photometry

LEC LIGHTING SCIENCES CANADA LTD.
440 Phillip St. Unit 19, Waterloo, Ont, Canada N2L 5R9
Tel: (519) 746-3140 Fax: (519) 746-3156

CERTIFIED TEST REPORT NO. LSC7652
COMPUTED BY LSC PROGRAM **TEST-LITE**

CFI CEILING-MOUNTED FLUORESCENT FIXTURE CAT. NO. QVT1SPFOS220120S0
WHITE PAINTED BODY, PERFORATED LAMP SHIELDS, WHITE TRANSLUCANT LENSES
TWO F17T8/TL841 17W T8 FLUORESCENT LAMPS. LUMEN RATING = 1400 LMS.
ADVANCE 120V 1 OR 2-LAMPS ELECTRONIC BALLAST REL-2F32-RH-TP

CANDLEPOWER SUMMARY

ANGLE	ALONG	45	67.5	ACROSS	OUTPUT LUMENS
0	190	190	190	190	190
5	193	193	191	189	189
15	184	184	188	187	187
25	167	170	176	184	189
35	145	151	163	179	189
45	113	123	152	179	192
55	83	98	144	183	199
65	53	78	139	195	216
75	31	69	151	214	237
85	11	85	172	227	244
90	6	95	167	217	238
95	6	63	146	204	223
105	7	9	61	153	180
115	7	7	6	16	18
125	7	4	4	0	0
135	6	5	0	0	0
145	0	0	0	0	0
155	0	0	0	0	0
165	0	0	0	0	0
175	0	0	0	0	0
180	0	0	0	0	0

ZONE LUMENS % LAMP % LUMINAIRE

0-30	152	5.43	12.73
0-40	256	9.14	21.44
0-60	500	17.86	41.88
0-90	950	33.93	79.56
40-90	694	24.79	58.12
60-90	449	16.04	37.60
90-180	244	10.14	23.78
0-180	1194	42.64	100.00

** EFFICIENCY = 42.6% **

LUMINANCE SUMMARY-CD. / SQ. M. S/MH = 1.5
SC(ALONG) = 1.2, SC(ACROSS) = 1.5

ANGLE	ALONG	45	ACROSS
45	864	1165	1472
55	789	1267	1837
65	682	1733	2343
75	654	2356	2941
85	668	3480	3663

CERTIFIED BY: *Charles Sam* DATE: FEB 11, 1999
PREPARED FOR: CANADIAN FLUORESCENT INDUSTRIES
CORNWALL, ONTARIO

TESTED ACCORDING TO IES PROCEDURES. TEST DISTANCE EXCEEDS FIVE TIMES THE GREATEST LUMINOUS OPENING OF LUMINAIRE.

LIGHTING SCIENCES CANADA LTD.
440 PHILLIP ST. UNIT 19
WATERLOO, ONTARIO CANADA N2L 5R9
CERTIFIED TEST REPORT NO. LSC7652
COMPUTED BY LSC PROGRAM **TEST-LITE**

CFI CEILING-MOUNTED FLUORESCENT FIXTURE CAT. NO. QVT1SPFOS220120S0
WHITE PAINTED BODY, PERFORATED LAMP SHIELDS, WHITE TRANSLUCANT LENSES
TWO F17T8/TL841 17W T8 FLUORESCENT LAMPS. LUMEN RATING = 1400 LMS.
ADVANCE 120V 1 OR 2-LAMPS ELECTRONIC BALLAST REL-2F32-RH-TP

COEFFICIENTS OF UTILIZATION

ZONAL CAVITY METHOD
EFFECTIVE FLOOR CAVITY REFLECTANCE = .20

CC WALL	80	70	50	30	10	0
70	50	30	10	70	50	30
50	30	10	50	30	10	50
30	10	50	30	10	50	30
10	50	30	10	50	30	10
0	50	30	10	50	30	10

RCR

0	.49	.49	.49	.49	.47	.47	.47	.47	.43	.43	.43	.39	.39	.39	.36	.36	.36	.34
1	.42	.39	.37	.34	.40	.38	.35	.33	.34	.32	.30	.31	.29	.28	.28	.27	.25	.24
2	.38	.33	.29	.26	.36	.32	.28	.25	.28	.26	.23	.26	.23	.21	.23	.21	.20	.18
3	.34	.29	.24	.21	.32	.27	.23	.20	.25	.22	.19	.22	.20	.17	.20	.18	.16	.15
4	.31	.25	.21	.18	.29	.24	.20	.17	.22	.18	.16	.20	.17	.15	.18	.15	.13	.12
5	.28	.22	.18	.14	.26	.21	.17	.14	.19	.16	.13	.17	.14	.12	.15	.13	.11	.10
6	.26	.19	.15	.12	.24	.19	.15	.12	.17	.14	.11	.15	.12	.10	.14	.11	.09	.08
7	.24	.17	.13	.11	.22	.17	.13	.10	.15	.12	.10	.14	.11	.09	.13	.10	.08	.07
8	.22	.16	.12	.09	.21	.15	.11	.09	.14	.10	.08	.12	.10	.08	.11	.09	.07	.06
9	.20	.14	.10	.08	.19	.14	.10	.08	.12	.09	.07	.11	.08	.07	.10	.08	.06	.05
10	.19	.13	.09	.07	.18	.12	.09	.07	.11	.08	.06	.10	.08	.06	.09	.07	.05	.04

DETERMINED IN ACCORDANCE WITH CURRENT IES PUBLISHED PROCEDURES
LUMINAIRE INPUT WATTS = 33.2
LABORATORY RESULT MAY NOT BE REPRESENTATIVE OF FIELD PERFORMANCE.
BALLAST FACTORS HAVE NOT BEEN APPLIED.

Ordering Information

Explanation of Catalog Number. Example: QVT1SPFOS217120S0

QVT	1	S	PF	OS	2	20			
QUALITY VISUAL STATIC Recessed direct indirect soft light optical system	FIXTURE WIDTH: 1'	SURFACE MOUNTED	LAMP SHIELD: PF = Microperforated	OS = Open slot (no acrylic)	LAMP QUANTITY	LAMP/FIXTURE LENGTH: (NOMINAL 24") 17 = 17W T8	VOLTAGE: 120V 277V 347V	BALLAST: OC = Magnetic T8 SO = Electronic T8 SR = Electronic T8 rapid start PS = PowerSpec HDF Dimming (Not available in 347V)	OPTIONS: R = Radio Interference Filter

Specifications

MATERIALS: One piece chassis constructed from die formed 20 gauge cold rolled steel. Reflectors - 95% reflectance baked white acrylic matte paint finish. Soft white acrylic film on inside of lamp shield conceals lamp image.

FINISH: Chassis exterior - phosphate undercoating, baked white acrylic matte high reflectance paint finish.

ELECTRICAL: Rapid start HPF, thermally protected class "P" ballast (Bi-tube type). If K.O.s are within 3" of ballast use wire suitable for at least 90C.

LABELS: Listed by



Job Information

Type:

Lightolier a Genlyte Thomas Company www.lightolier.com
Technical Information: (978) 657-7600 • Fax (978) 658-0595
631 Airport Road, Fall River, MA 02720 • (508) 679-8131 • Fax (508) 674-4710
We reserve the right to change details of design, materials and finish.
© 2002 Genlyte Thomas Group LLC (Lightolier Division)
A0902 Section 5 / Folio L60-10

LIGHTOLIER®