

QVS2GPTOS232

ALTER METALYTE

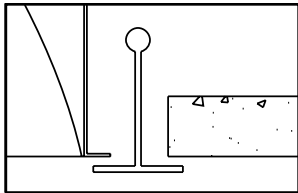
2' X 4' RECESSED DIRECT/INDIRECT FLUORESCENT
2 LAMP, T8, 5 1/2" DEEP
MICROPERFORATED MESH LAMP SHIELD
STATIC

- Efficiency 44.8%.
- Semi-specular aluminum reflectors with lengthwise ridges.
- Swing down microperforated lamp shield for easy relamping and maintenance.
- Alter soft white film on inside of mesh conceals lamp image and provide balance between reflected light and direct light.
- Fully recessed luminaire and lamp compartment.
- Specular interior reflector.
- One piece body for easy installation.
- Easy access to ballast through lamp compartment.
- Fits standard T-Grid ceilings.
- Optional acrylic drop-down visual element.

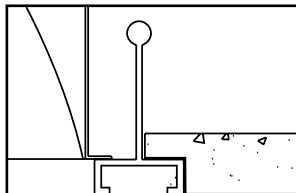


MOUNTING METHODS/FEATURES

Ceiling compatibility

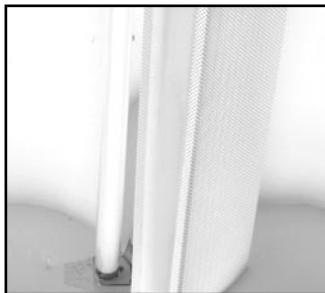


Suited to standard exposed T-grid ceilings

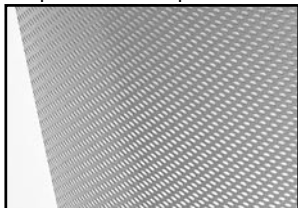


Suited to standard exposed Slot T-grid ceilings

Swing down optical system for easy relamping and maintenance



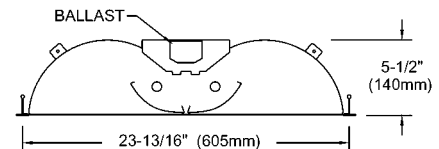
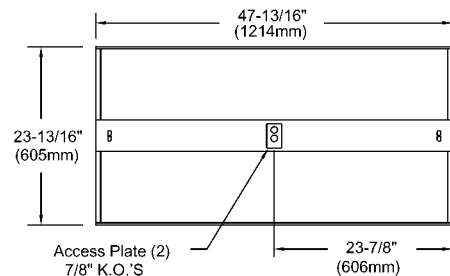
Microperforated mesh lamp shields



Semi-specular aluminum reflector with lengthwise ridges



DIMENSIONS



FIXTURE TYPE

VOLTS

JOB INFORMATION:

LIGHTOLIER
Genlyte Thomas Company

QVS2GPTOS232

ALTER METALYTE

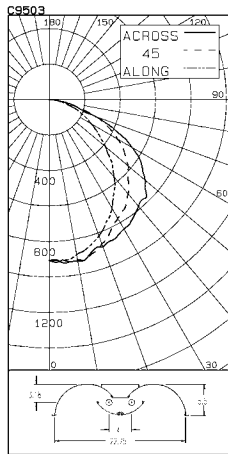
2' X 4' RECESSED DIRECT/INDIRECT FLUORESCENT

CERTIFIED TEST REPORT NO. LSC9503
COMPUTED BY LSC PROGRAM **TEST-LITE**

LIGHTOLIER-CFI ALTER 2x4 RECESSED FIXTURE CAT. NO. QVS2GPTOS232120SO
WITH ALUMINUM RIBBED REFLECTOR AND OPEN SLOT MICRO PERFORATED DOOR
TWO 32W T8 FLUORESCENT LAMPS. LUMEN RATING = 2950 LMS.
ONE ADVANCE TRANSFORMER 120V 1 OR 2-LAMP ELECTRONIC BALLAST NO. REL-2P32-SC

LIGHTING SCIENCES CANADA LTD.
440 PHILLIP ST., UNIT 19
WATERLOO, ONTARIO

CERTIFIED TEST REPORT NO. LSC9503
COMPUTED BY LSC PROGRAM **TEST-LITE**



CANDLEPOWER SUMMARY				OUTPUT LUMENS	
ANGLE	ALONG	45	67.5	ACROSS	
0	907	907	907	907	
5	906	907	909	911	88
10	866	905	916	929	
15	859	877	904	894	251
20	817	855	866	870	
25	761	807	817	841	378
30	707	742	773	830	
35	635	666	745	795	459
40	567	598	692	760	
45	498	523	629	722	484
50	415	463	580	686	
55	340	400	518	618	450
60	270	334	445	520	
65	217	270	365	416	337
70	168	213	278	283	
75	105	147	156	154	163
80	68	92	67	85	
85	27	24	28	24	35
90	3	5	6	0	

ZONAL LUMENS AND PERCENTAGES

ZONE	LUMENS	% LAMP	% LUMINAIRE
0-30	717	12.15	27.11
0-40	1175	19.93	44.46
0-60	2109	35.75	79.76
0-90	2644	44.83	100.00
40-90	1468	24.90	55.54
60-90	535	9.07	20.24
90-180	0	.00	.00
0-180	2644	44.83	100.00

** EFFICIENCY = 44.8% **

LUMINANCE SUMMARY-CD. / SQ. M.

S/MH = 1.4

SC (ALONG) = 1.2, SC (ACROSS) = 1.4

ANGLE	ALONG	45	ACROSS
45	1021	1293	1595
55	858	1313	1614
65	744	1257	1427
75	590	874	910
85	442	463	409

CERTIFIED BY:

DATE: NOV 5, 2002

PREPARED FOR:
LIGHTOLIER-CFI
CORNWALL, ONTARIO

TESTED ACCORDING TO IES PROCEDURES. TEST DISTANCE EXCEEDS FIVE TIMES THE GREATEST LUMINOUS OPENING OF LUMINAIRE.

LIGHTOLIER-CFI ALTER 2x4 RECESSED FIXTURE CAT. NO. QVS2GPTOS232120SO
WITH ALUMINUM RIBBED REFLECTOR AND OPEN SLOT MICRO PERFORATED DOOR
TWO 32W T8 FLUORESCENT LAMPS. LUMEN RATING = 2950 LMS.
ONE ADVANCE TRANSFORMER 120V 1 OR 2-LAMP ELECTRONIC BALLAST NO. REL-2P32-SC

COEFFICIENTS OF UTILIZATION

ZONAL CAVITY METHOD

EFFECTIVE FLOOR CAVITY REFLECTANCE = .20

CC WALL	80				70				50				30				10				0			
	70	50	30	10	70	50	30	10	50	30	10	50	30	10	50	30	10	50	30	10	50	30	10	0
RCR	0	.53	.53	.53	.53	.52	.52	.52	.52	.50	.50	.50	.48	.48	.48	.46	.46	.46	.45	.45	.45	.45	.45	.45
	1	.49	.47	.45	.44	.48	.46	.45	.43	.44	.43	.42	.43	.42	.41	.41	.40	.39	.38	.38	.38	.38	.38	.38
	2	.45	.42	.39	.36	.44	.41	.38	.36	.39	.37	.35	.38	.36	.34	.36	.35	.34	.33	.33	.33	.33	.33	.33
	3	.41	.37	.33	.31	.40	.36	.33	.30	.35	.32	.30	.34	.31	.29	.33	.31	.29	.28	.28	.28	.28	.28	.28
	4	.38	.33	.29	.26	.37	.32	.29	.26	.31	.28	.26	.30	.27	.25	.29	.27	.25	.24	.24	.24	.24	.24	.24
	5	.35	.29	.25	.22	.34	.28	.25	.22	.27	.24	.22	.27	.24	.21	.26	.23	.21	.20	.20	.20	.20	.20	.20
	6	.32	.26	.22	.19	.31	.25	.22	.19	.25	.21	.19	.24	.21	.19	.23	.20	.18	.17	.17	.17	.17	.17	.17
	7	.29	.23	.19	.17	.28	.23	.19	.16	.22	.19	.16	.21	.18	.16	.21	.18	.16	.15	.15	.15	.15	.15	.15
	8	.27	.21	.17	.14	.26	.20	.17	.14	.20	.16	.14	.19	.16	.14	.19	.16	.14	.13	.13	.13	.13	.13	.13
	9	.25	.19	.15	.12	.24	.18	.15	.12	.18	.15	.12	.17	.14	.12	.17	.14	.12	.11	.11	.11	.11	.11	.11
	10	.23	.17	.13	.11	.22	.17	.13	.11	.16	.13	.11	.16	.13	.11	.15	.13	.11	.10	.10	.10	.10	.10	.10

DETERMINED IN ACCORDANCE WITH CURRENT IES PUBLISHED PROCEDURES
LUMINAIRE INPUT WATTS = 57.1
LABORATORY RESULT MAY NOT BE REPRESENTATIVE OF FIELD PERFORMANCE.
BALLAST FACTORS HAVE NOT BEEN APPLIED.

ORDERING INFORMATION Explanation of Catalogue Number Example: QVS2GPTOS232120SO

QVS	2	G	PT	OS	2	32	120	SO	
QUALITY VISUAL STATIC Recessed direct indirect soft light optical system	FIXTURE WIDTH 2'	CEILING TYPE Standard exposed T-grid ceilings	LAMP SHIELD PT= Semi-specular matte reflector / Microperforated mesh lamp shield	CLEAR POLISHED ACRYLIC DROP DOWN VISUAL ELEMENT OS = Open slot (no acrylic) OP = One Piece (no center slot) GC = Clear acrylic GG = Clear acrylic / Green projected color face GB = Clear acrylic / Blue projected color face GR = Clear acrylic / Red projected color face	LAMP QUANTITY	LAMP/FIXTURE LENGTH (NOMINAL 24") 32 = 32W T8	VOLTAGE 120, 277, 347	BALLAST SO: 2 LPB T8 Elec. PS: T8 PowerSpec HDF Dimming † DA: iGEN DALI †	OPTIONS R = Radio Interface Filter O = Emergency Lighting System (for Canada) N = Emergency Lighting System (for U.S.)

† Not available in 347V.

SPECIFICATIONS

MATERIALS: One piece chassis constructed from die formed 20 gauge cold rolled steel. **Reflectors** - Semi-specular matte aluminum reflector with lengthwise ridges. Soft white acrylic film on inside of lamp shield conceals lamp image.

FINISH: Chassis exterior - phosphate undercoating, baked white acrylic matte high reflectance paint finish.

ELECTRICAL: Rapid start HPF, thermally protected class "P" ballast (Bi-tube type). If K.O.s are within 3" of ballast use wire suitable for at least 90C.

LABELS: Listed by CSA, UL

We reserve the right to change, materials and finish in any way that will not alter installed appearance or reduce function and performance.

Genlyte Thomas Company

631 Airport Road, Fall River, MA 02720 - Tel. (508) 679-8131
C.F.I. Division of Canlyte, Inc.
525 Education Road, Cornwall, Ontario
Canada K6H 6C7 - (613) 938-6221