

QVS2GPTLG2FT

2X40W

ALTER METALYTE LOUVER

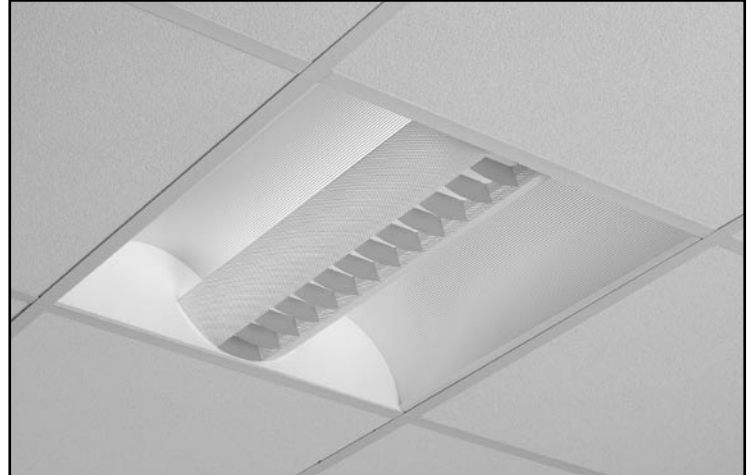
2' X 2' RECESSED DIRECT/INDIRECT FLUORESCENT

2 LAMP, TT5, 5 1/2" DEEP

MICROPERFORATED MESH WHITE LAMP SHIELD

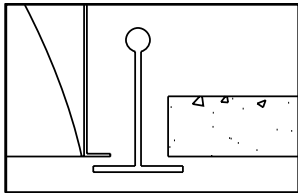
GREY SOLID LOUVER BLADES STATIC

- Efficiency 40.7%.
- Flat blade louver with lens overlay and perforated curved side blades.
- Semi-specular aluminum reflectors with lengthwise ridges.
- No visible welding, screws, latches, springs, hooks, rivets or plastic supports.
- 5-1/2" deep, one-piece body for easy installation.
- Choice of white microperforated blade, white solid blade or grey solid blade.
- Easy access to ballast through lamp compartment.
- Fits standard T-grid, exposed slot T-grid ceilings and drywall ceilings.
- Fully recessed luminaire and lamp compartment.
- Optional hold-down clips.
- Luminaire can be row mounted.

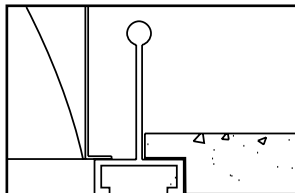


MOUNTING METHODS/FEATURES

Ceiling compatibility

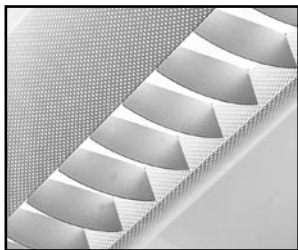


Suited to standard exposed T-grid ceilings

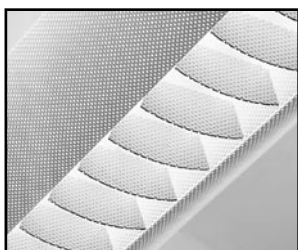


Suited to standard exposed Slot T-grid ceilings

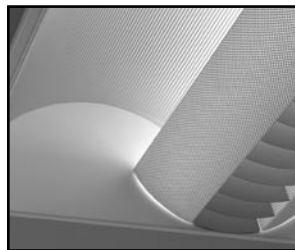
Microperforated mesh white lamp shields
grey solid louver



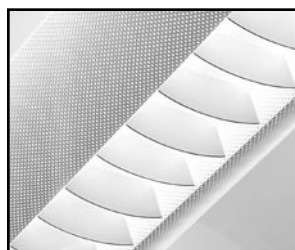
Microperforated mesh white lamp shields
white mesh louver



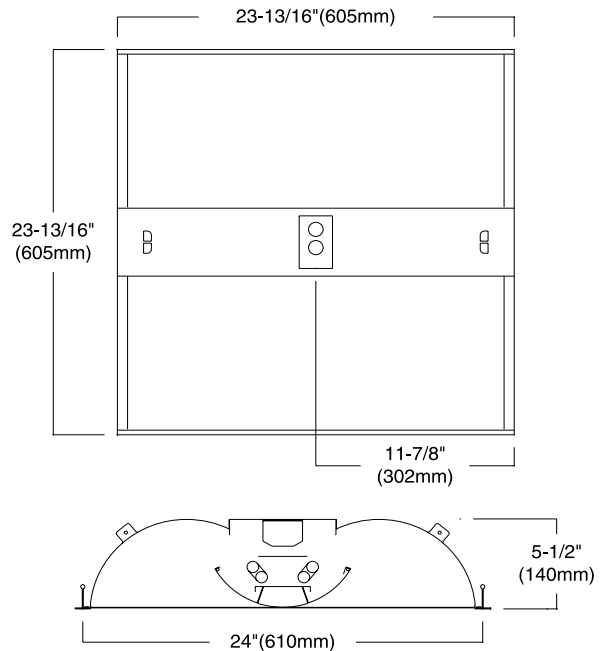
Semi-spec reflector with lengthwise ridges



Microperforated mesh white lamp shields
white solid louver



DIMENSIONS



| FIXTURE TYPE | VOLTS |
|------------------------|-------|
| | |
| | |
| | |
| JOB INFORMATION: _____ | |
| | |
| | |

QVS2GPTLG2FT

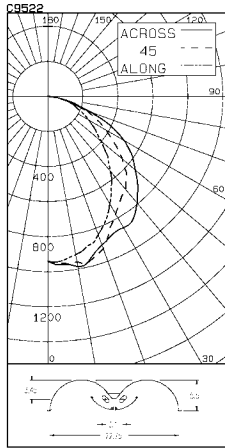
ALTER METALYTE LOUVER 2' X 2' RECESSED DIRECT/INDIRECT FLUORESCENT

CERTIFIED TEST REPORT NO. LSC9522
COMPUTED BY LSC PROGRAM **TEST-LITE**

LIGHTOLIER-CFI ALTER 2x2 LUMINAIRE CAT. NO. QVS2GPTOS2FT120SB
WITH MICRO-PERFORATED DOORS AND ALUMINUM RIBBED REFLECTORS
TWO 40W BIAX COMPACT FLUORESCENT LAMPS. LUMEN RATING = 3150 LMS.
UNIVERSAL TRIAD 120V 1 OR 2-LAMP ELECTRONIC BALLAST NO. C240SI120RH

LIGHTING SCIENCES CANADA LTD.
440 PHILLIP ST., UNIT 19
WATERLOO, ONTARIO

CERTIFIED TEST REPORT NO. LSC9522
COMPUTED BY LSC PROGRAM **TEST-LITE**



| ANGLE | ALONG | 45 | 45 | 67.5 | ACROSS | OUTPUT LUMENS |
|-------|-------|-----|-----|------|--------|---------------|
| 0 | 939 | 939 | 939 | 939 | 939 | |
| 5 | 941 | 950 | 954 | 959 | 962 | 93 |
| 10 | 916 | 946 | 959 | 985 | 984 | |
| 15 | 862 | 929 | 964 | 967 | 953 | 264 |
| 20 | 840 | 980 | 923 | 897 | 903 | |
| 25 | 782 | 841 | 836 | 862 | 870 | 388 |
| 30 | 709 | 768 | 773 | 832 | 864 | |
| 35 | 632 | 698 | 722 | 825 | 851 | 464 |
| 40 | 557 | 591 | 691 | 775 | 793 | |
| 45 | 483 | 515 | 639 | 700 | 727 | 471 |
| 50 | 398 | 438 | 554 | 621 | 653 | |
| 55 | 330 | 373 | 464 | 554 | 587 | 412 |
| 60 | 270 | 314 | 384 | 463 | 505 | |
| 65 | 213 | 240 | 302 | 369 | 397 | 301 |
| 70 | 167 | 187 | 233 | 253 | 254 | |
| 75 | 121 | 123 | 130 | 138 | 160 | 145 |
| 80 | 75 | 61 | 62 | 81 | 86 | |
| 85 | 22 | 14 | 13 | 25 | 29 | 28 |
| 90 | 0 | 0 | 0 | 0 | 0 | |

ZONAL LUMENS AND PERCENTAGES

| ZONE | LUMENS | % LAMP | % LUMINAIRE |
|--------|--------|--------|-------------|
| 0-30 | 744 | 11.51 | 29.01 |
| 0-40 | 1208 | 19.19 | 47.11 |
| 0-60 | 2091 | 33.20 | 81.51 |
| 0-90 | 2565 | 40.73 | 100.00 |
| 40-90 | 1357 | 21.54 | 52.89 |
| 60-90 | 474 | 7.53 | 18.49 |
| 90-180 | 0 | .00 | .00 |
| 0-180 | 2565 | 40.73 | 100.00 |

** EFFICIENCY = 40.7% **

LUMINANCE SUMMARY-CD. / SQ. M.

| ANGLE | ALONG | 45 | ACROSS |
|-------|-------|------|--------|
| 45 | 2021 | 2686 | 3056 |
| 55 | 1702 | 2406 | 3040 |
| 65 | 1495 | 2124 | 2791 |
| 75 | 1379 | 1491 | 1841 |
| 85 | 752 | 448 | 984 |

S/MH = 1.4
SC(ALONG) = 1.1, SC(ACROSS) = 1.4

CERTIFIED BY: DATE: NOV 14, 2002
PREPARED FOR: LIGHTOLIER-CFI CORNWALL, ONTARIO

TESTED ACCORDING TO IES PROCEDURES. TEST DISTANCE EXCEEDS FIVE TIMES THE GREATEST LUMINOUS OPENING OF LUMINAIRE.

LIGHTOLIER-CFI ALTER 2x2 LUMINAIRE CAT. NO. QVS2GPTOS2FT120SB
WITH MICRO-PERFORATED DOORS AND ALUMINUM RIBBED REFLECTORS
TWO 40W BIAX COMPACT FLUORESCENT LAMPS. LUMEN RATING = 3150 LMS.
UNIVERSAL TRIAD 120V 1 OR 2-LAMP ELECTRONIC BALLAST NO. C240SI120RH

COEFFICIENTS OF UTILIZATION

ZONAL CAVITY METHOD

EFFECTIVE FLOOR CAVITY REFLECTANCE = .20

| CC WALL | 80 | | | | | | 70 | | | | | | 50 | | | | | | 30 | | | | | | 10 | | | | | | 0 | | | | | | | | | | | | | | | | | | | | | | | | | | | | | | | | | | | | | | | | | | | | | | | | | | | | | | | | | | | | | | | | | | | | | | | | | | | | | | | | | | | | | | | | | | | | | | | | | | | | | | | | | | | | | | | | | | | | | | | | | | | | | | | | | | | | | | | | | | | | | | | | | | | | | | | | | | | | | | | | | | | | | | | | | | | | | | | | | |
|---------|----|-----|-----|-----|-----|-----|-----|-----|-----|-----|-----|-----|-----|-----|-----|-----|-----|-----|-----|----|-----|-----|-----|-----|-----|-----|-----|-----|-----|-----|-----|-----|-----|-----|-----|-----|-----|---|-----|-----|-----|-----|-----|-----|-----|-----|-----|-----|-----|-----|-----|-----|-----|-----|-----|-----|---|-----|-----|-----|-----|-----|-----|-----|-----|-----|-----|-----|-----|-----|-----|-----|-----|-----|-----|---|-----|-----|-----|-----|-----|-----|-----|-----|-----|-----|-----|-----|-----|-----|-----|-----|-----|-----|---|-----|-----|-----|-----|-----|-----|-----|-----|-----|-----|-----|-----|-----|-----|-----|-----|-----|-----|---|-----|-----|-----|-----|-----|-----|-----|-----|-----|-----|-----|-----|-----|-----|-----|-----|-----|-----|---|-----|-----|-----|-----|-----|-----|-----|-----|-----|-----|-----|-----|-----|-----|-----|-----|-----|-----|---|-----|-----|-----|-----|-----|-----|-----|-----|-----|-----|-----|-----|-----|-----|-----|-----|-----|-----|---|-----|-----|-----|-----|-----|-----|-----|-----|-----|-----|-----|-----|-----|-----|-----|-----|-----|-----|----|-----|-----|-----|-----|-----|-----|-----|-----|-----|-----|-----|-----|-----|-----|-----|-----|-----|-----|
| | 70 | 50 | 30 | 10 | 70 | 50 | 30 | 10 | 50 | 30 | 10 | 50 | 30 | 10 | 50 | 30 | 10 | 50 | 30 | 10 | 50 | 30 | 10 | | | | | | | | | | | | | | | | | | | | | | | | | | | | | | | | | | | | | | | | | | | | | | | | | | | | | | | | | | | | | | | | | | | | | | | | | | | | | | | | | | | | | | | | | | | | | | | | | | | | | | | | | | | | | | | | | | | | | | | | | | | | | | | | | | | | | | | | | | | | | | | | | | | | | | | | | | | | | | | | | | | | | | | | | | | | | | | | | | | | | | | | | |
| RCR | 0 | .48 | .48 | .48 | .48 | .47 | .47 | .47 | .47 | .45 | .45 | .45 | .43 | .43 | .43 | .42 | .42 | .42 | .41 | 1 | .45 | .43 | .42 | .40 | .44 | .42 | .41 | .40 | .40 | .39 | .38 | .39 | .38 | .37 | .37 | .36 | .35 | 2 | .41 | .38 | .36 | .34 | .40 | .38 | .35 | .33 | .36 | .34 | .33 | .35 | .33 | .32 | .34 | .32 | .31 | .30 | 3 | .38 | .34 | .31 | .29 | .37 | .33 | .31 | .28 | .32 | .30 | .28 | .31 | .29 | .27 | .30 | .28 | .27 | .26 | 4 | .35 | .31 | .27 | .25 | .34 | .30 | .27 | .25 | .29 | .26 | .24 | .28 | .26 | .24 | .27 | .25 | .24 | .23 | 5 | .32 | .27 | .24 | .21 | .31 | .27 | .24 | .21 | .26 | .23 | .21 | .25 | .23 | .21 | .25 | .22 | .21 | .20 | 6 | .30 | .25 | .21 | .19 | .29 | .24 | .21 | .19 | .23 | .21 | .18 | .23 | .20 | .18 | .22 | .20 | .18 | .17 | 7 | .27 | .22 | .19 | .16 | .27 | .22 | .18 | .16 | .21 | .18 | .16 | .20 | .18 | .16 | .20 | .18 | .16 | .15 | 8 | .25 | .20 | .17 | .14 | .25 | .20 | .17 | .14 | .19 | .16 | .14 | .19 | .16 | .14 | .18 | .16 | .14 | .13 | 9 | .24 | .18 | .15 | .13 | .23 | .18 | .15 | .13 | .17 | .15 | .13 | .17 | .14 | .12 | .17 | .14 | .12 | .12 | 10 | .22 | .17 | .13 | .11 | .21 | .16 | .13 | .11 | .16 | .13 | .11 | .16 | .13 | .11 | .15 | .13 | .11 | .10 |

DETERMINED IN ACCORDANCE WITH CURRENT IES PUBLISHED PROCEDURES
LUMINAIRE INPUT WATTS = 65.0
LABORATORY RESULT MAY NOT BE REPRESENTATIVE OF FIELD PERFORMANCE.
BALLAST FACTORS HAVE NOT BEEN APPLIED.

ORDERING INFORMATION Explanation of Catalogue Number Example: QVS2GPTLG2FT120SB

| | | | | | | | | | |
|---|---------------------------------------|---------------------------------------|---|--|-----------------------------------|---|---|--|---|
| QVS FAMILY QVS: Quality Visual Static recessed direct/ indirect fluorescent | 2 LUMINAIRE WIDTH 24" | G CEILING TYPE G=Grid | PT LAMP SHIELD PT=Semi-specular matte reflector / Microperforated mesh lamp shield | LG SHIELD DETAILING LG= Grey solid flat blade louver LV= White perforated flat blade louver LW= White solid flat blade louver | 2 LAMP QUANTITY 3 | FT LAMP/FIXTURE LENGTH FT= TT5 Bi-tube | 120 VOLTAGE 120,277 347 | SB BALLAST SB: 40W TT5 Elect. BE: 50W TT5 Elect. BD: 55W TT5 Elect. PB: 40W TT5 PowerSpec HDF Dimming † DA: iGEN DALI † | OPTIONS F = Internal Fusing (consult factory) N = Emergency Lighting System (for U.S.) O = Emergency Lighting System (for Canada) R = Radio Interface Filter |
|---|---------------------------------------|---------------------------------------|---|--|-----------------------------------|---|---|--|---|

LPB : Number of lamps per ballast

† Not available in 347V.

SPECIFICATIONS

MATERIALS: One piece chassis constructed from die formed 20 gauge cold rolled steel. **Optic** - Semi-specular matte aluminum reflector with lengthwise ridges. Soft white acrylic film on inside of lamp shield conceals lamp image.

FINISH: Chassis exterior - phosphate undercoating, baked white acrylic matte high reflectance paint finish. **Louver** - flat blade louver with soft white acrylic overlay.

ELECTRICAL: Rapid start HPF, thermally protected class "P" ballast. If K.O.s are within 3" of ballast use wire suitable for at least 90C.

LABELS: Listed by CSA, UL

We reserve the right to change, materials and finish in any way that will not alter installed appearance or reduce function and performance.

Genlyte Thomas Company

631 Airport Road, Fall River, MA 02720 - Tel. (508) 679-8131
C.F.I. Division of Canlyte, Inc.
525 Education Road, Cornwall, Ontario
Canada K6H 6C7 - (613) 938-6221