

# ALTER SOFT LIGHTS **QVH1GPFOS2FT 2X40W**

Page 1 of 2

1'x4' SLIM SEMI-RECESSED DIRECT/INDIRECT FLUORESCENT, 2 LAMP, TT5 BI-TUBE  
3 9/16" RECESSED DEPTH CEILING, MICROPERFORATED MESH LAMP SHIELD, STATIC

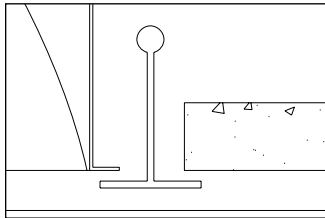
## Features

- Efficiency 47.5%.
- Shallow plenum depth.
- Swing down microperforated lamp shields for easy relamping and maintenance.
- Alter soft white film on inside of mesh conceals lamp image and provide balance between reflected light and direct light.
- 95% Reflective Alter soft white paint finish.
- One piece body for easy installation.
- Easy access to ballast through lamp compartment.
- Fits standard T-Grid ceilings.

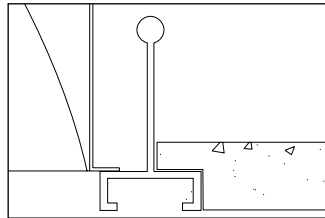


## Mounting MethodS / Features

Ceiling compatibility

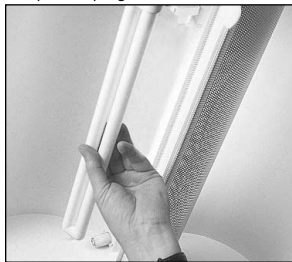


Suited to standard exposed T-grid ceilings

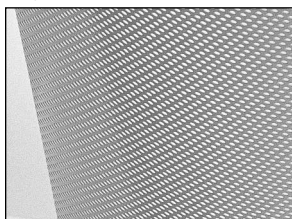


Suited to standard exposed Slot T-grid ceilings

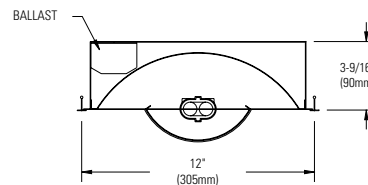
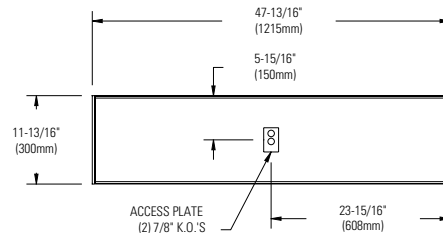
Swing down optical system for easy relamping and maintenance



Microperforated mesh lamp shields



## Dimensions



## Job Information

Type:

Job Name:

Cat. No.:

Lamp(s):

Volts/Ballast:

Lightolier a Genlyte Thomas Company

www.lightolier.com

Technical Information: (978) 657-7600 • Fax (978) 658-0595

631 Airport Road, Fall River, MA 02720 • (508) 679-8131 • Fax (508) 674-4710

We reserve the right to change details of design, materials and finish.

© 2002 Genlyte Thomas Group LLC (Lightolier Division)

A0902

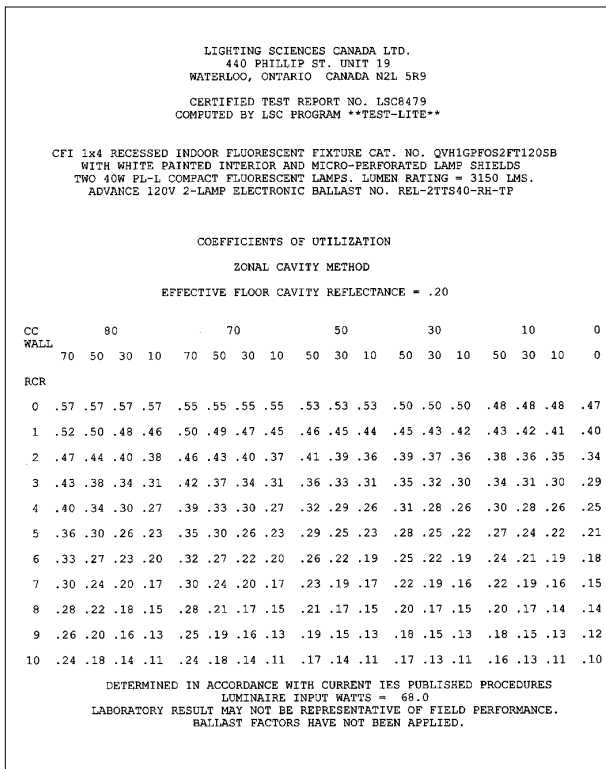
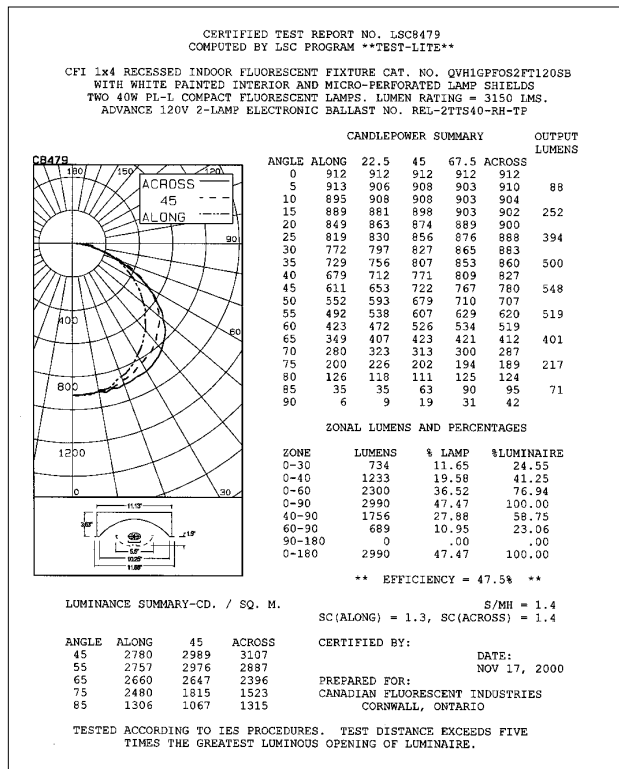
Section 5 / Folio L85-15

**LIGHTOLIER**®

# ALTER SOFT LIGHTS QVH1GPFOS2FT 2X40W

1'x4' SLIM SEMI-RECESSED DIRECT/INDIRECT FLUORESCENT, 2 LAMP, TT5 BI-TUBE  
3 9/16" RECESSED DEPTH CEILING, MICROPERFORATED MESH LAMP SHIELD, STATIC

## Photometry



## Ordering Information

Explanation of Catalog Number. Example: QVH1GPFOS2FT120SB

<b>QVH</b>	<b>1</b>	<b>G</b>	<b>PF</b>	<b>OS</b>	<b>2</b>	<b>FT</b>			
<b>QUALITY VISUAL STATIC</b> QVH- Slim Semi-Recessed	<b>FIXTURE WIDTH:</b> 1'	<b>CEILING TYPE:</b> G=Standard exposed T-grid ceilings	<b>LAMP SHIELD:</b> PF = Microperforated	<b>SHIELD DETAILING:</b> OS = Open slot (no acrylic)	<b>LAMP QUANTITY</b>	<b>LAMP/FIXTURE LENGTH:</b> (NOMINAL 24") FT = TT5 Bi-Tube	<b>VOLTAGE:</b> 120V 277V 347V	<b>BALLAST:</b> BE = 50W Electronic TT5 RS BR = 40W Electronic TT5 RS BX = 40W Magnetic TT5 RS PB = 40W TT5 PowerSpec Dimming* PC = 50/55W TT5 PowerSpec Dimming* SB = 40W Generic Electronic TT5	<b>OPTIONS:</b> F = Internal Fusing (consult factory) N = Emergency lighting System (for U.S.) O = Emergency Lighting System (for Canada) R = Radio Interference Filter

\*Not available in 347V.

## Specifications

**MATERIALS:** One piece chassis constructed from die formed 20 gauge cold rolled steel. Reflectors - 95% reflectance baked white acrylic matte paint finish. Soft white acrylic film on inside of lamp shield conceals lamp image.

**FINISH:** Chassis exterior - phosphate undercoating, baked white acrylic matte high reflectance paint finish.

**ELECTRICAL:** Rapid start HPF, thermally protected class "P" ballast (Bi-tube type). If K.Os are within 3" of ballast use wire suitable for at least 90C.

**LABELS:** Listed by



## Job Information

Type:

Lightolier a Genlyte Thomas Company [www.lightolier.com](http://www.lightolier.com)  
Technical Information: (978) 657-7600 • Fax (978) 658-0595  
631 Airport Road, Fall River, MA 02720 • (508) 679-8131 • Fax (508) 674-4710  
We reserve the right to change details of design, materials and finish.  
© 2002 Genlyte Thomas Group LLC (Lightolier Division)  
A0902 **Section 5 / Folio L85-15**

LIGHTOLIER®