

2'x2' RECESSED DIRECT/INDIRECT FLUORESCENT,
2 LAMP, TT5 BI-TUBE TRIPLE TUBE, 5 1/2" DEEP
MICROPERFORATED MESH DUAL LATERAL LAMP SHIELD

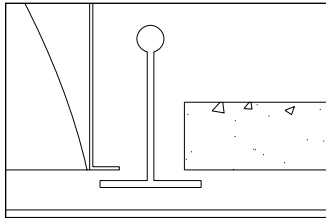
Features

- Efficiency 45.2%.
- Microperforated mesh lamp shields provide soft awareness of light source.
- Dual-wave shape lateral lamp shields project light upwards to reflector and provide indirect light.
- 95% reflective Alter soft white paint finish.
- Fully recessed lamp shields and reflector.
- No visible welding, screws, latches, springs, holes, rivets or plastic supports.
- Optional solid lamp shields.
- Optional curved lamp shields.
- Alter soft white film inside of microperforated mesh lamp shield conceals lamp image, providing balance between reflected and direct light.
- Swing-down lamp shield for easy relamping.
- Easy access to ballast.
- Fits standard T-grid, exposed slot-T-grid and drywall ceilings.
- Optional hold-down clips.

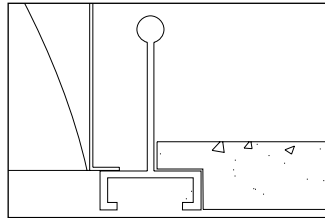


Mounting Methods / Features

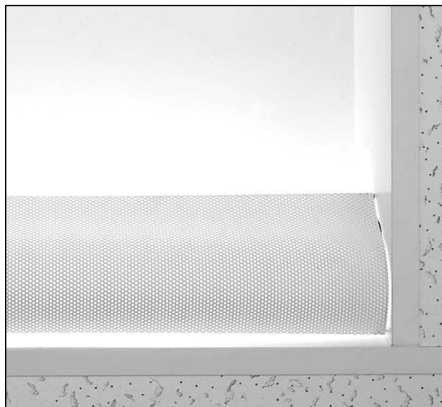
Ceiling compatibility



Suite to standard T-grid ceilings

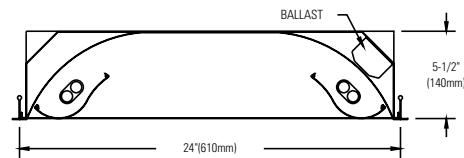
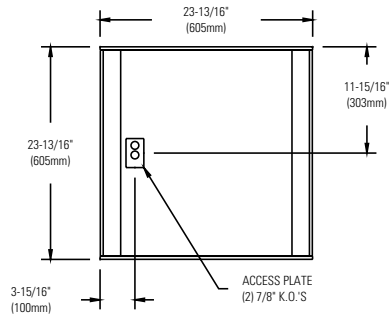


Suite to standard exposed slot T-grid ceilings



Microperforated mesh lamp shield

Dimensions



Job Information

Type:

Job Name:

Cat. No.:

Lamp(s):

Volts/Ballast:

Lightolier a Genlyte Thomas Company

www.lightolier.com

Technical Information: (978) 657-7600 • Fax (978) 658-0595

631 Airport Road, Fall River, MA 02720 • (508) 679-8131 • Fax (508) 674-4710

We reserve the right to change details of design, materials and finish.

© 2002 Genlyte Thomas Group LLC (Lightolier Division)

A0902

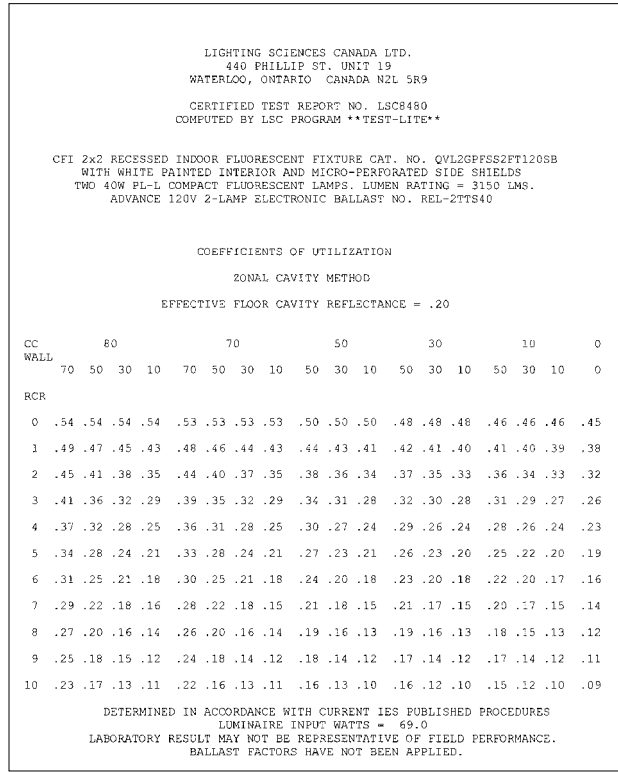
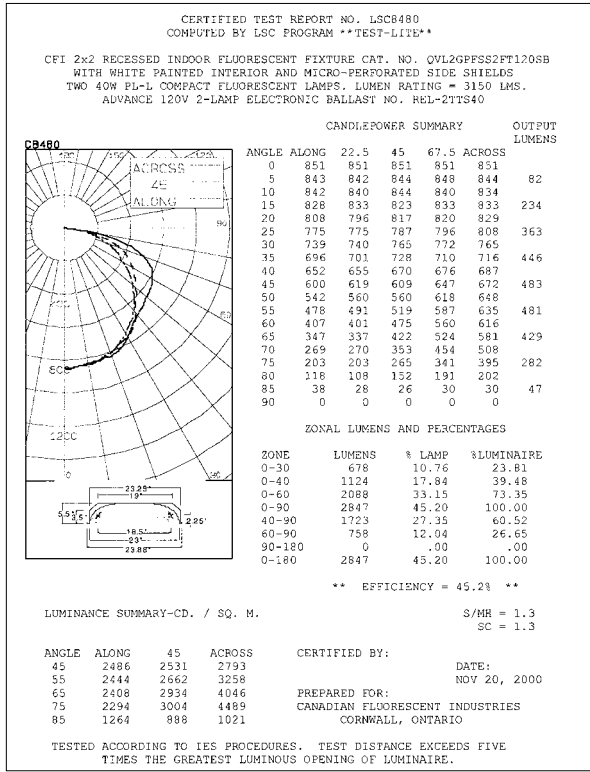
Folio L90-10

LIGHTOLIER

ALTER WAVES QVL2GPFSS2FT 2X40W

2'x2' RECESSED DIRECT/INDIRECT FLUORESCENT,
2 LAMP, TT5 BI-TUBE TRIPLE TUBE, 5 1/2" DEEP
MICROPERFORATED MESH DUAL LATERAL LAMP SHIELD

Photometry



Ordering Information

Explanation of Catalog Number. Example: QVL2GPFSS2FT120SB

QVL	2	G			2	FT			
FAMILY QVL: Quality Visual Waves	LUMINAIRE WIDTH: 24"	CEILING TYPE: G = Grid			LAMP QUANTITY 2	LAMP FT = TT5	VOLTAGE: 120V 277V 347V		OPTIONS: F = Internal Fusing (consult factory) N = Emergency lighting System (for U.S.) O = Emergency Lighting System (for Canada) R = Radio Interference Filter
			LAMP SHIELD: PF = Microperforated mesh SD = Solid White	SHIELD DETAILING SS = Lateral Wave Side Shields SR = Lateral Curved Side Shields			BALLAST: BX = 40W Magnetic TT5 RS SB = 2 lamps 40W TT5 Electronic RS BE = 2 lamps 50W TT5 Electronic RS BD = 2 lamps 55W TT5 Electronic RS PA = PowerSpec HDF Dimming Electronic 18W TT5 PB = PowerSpec HDF Dimming Electronic 40W TT5 PC = PowerSpec HDF Dimming Electronic 50/55W TT5		

Specifications

MATERIALS: One piece chassis constructed from die formed 20 gauge cold rolled steel. Reflectors - 95% reflectance baked white acrylic matte paint finish. Soft white acrylic film on inside of lamp shield conceals lamp image.

FINISH: Chassis exterior - phosphate undercoating, baked white acrylic matte high reflectance paint finish.

ELECTRICAL: Rapid start HPF, thermally protected class "P" ballast (Bi-tube type). If K.O.s are within 3" of ballast use wire suitable for at least 90C.

LABELS: Listed by



Job Information

Type:

Lightolier a Genlyte Thomas Company www.lightolier.com
Technical Information: (978) 657-7600 • Fax (978) 658-0595
631 Airport Road, Fall River, MA 02720 • (508) 679-8131 • Fax (508) 674-4710
We reserve the right to change details of design, materials and finish.
© 2002 Genlyte Thomas Group LLC (Lightolier Division)
A0902

Folio L90-10

LIGHTOLIER®