

ALTER HIGH EFFICIENCY QHE1GPFOP128 OR 228

1' X 4' RECESSED DIRECT/INDIRECT FLUORESCENT 1 OR 2 LAMP, T5
5" DEEP MICROPERFORATED MESH LAMP SHIELD, STATIC

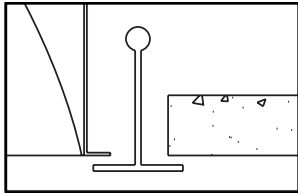
Features

- Efficiency 57.6% (2 lamp T5).
- Swing down microperforated lamp shield for easy relamping and maintenance.
- Alter soft white film on inside of mesh conceals lamp image and provide balance between reflected light and direct light.
- Fully recessed luminaire and lamp compartment.
- 95% Reflective Alter soft white paint finish.
- One piece body for easy installation.
- Easy access to ballast through lamp compartment.
- Fits standard T-Grid ceilings. (G type)

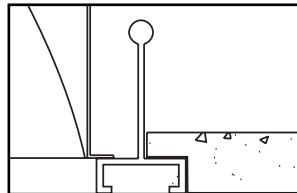


Mounting Methods / Features

Ceiling compatibility

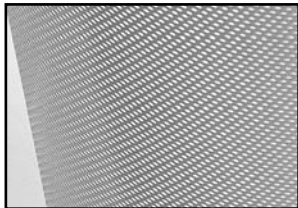


Suited to standard exposed T-grid ceilings

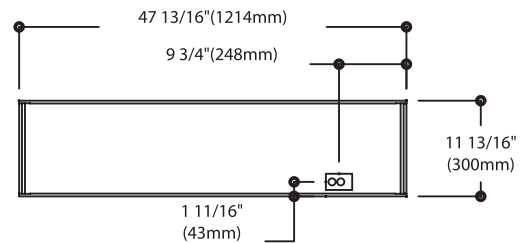
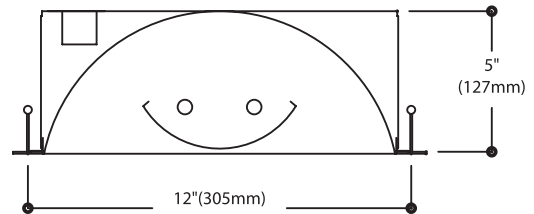


Suited to standard exposed Slot T-grid ceilings

Microperforated mesh lamp shield



Dimensions



Job Information

Type:

Job Name:

Cat. No.:

Lamp(s):

Volts/Ballast:

Lightolier a Genlyte Thomas Company

Technical Information: (978) 657-7600 – (978) 658-0595

631 Airport Road, Fall River, MA 02720 – (508) 679-8131

C.F.I. Division of Canlyte, Inc.

525 Education Road, Cornwall, Ontario, Canada K6H 6C7 – (613) 938-6221

We reserve the right to change details of design, materials and finish.

© 2004 Genlyte Thomas Group LLC (Lightolier Division)

A0902

Section 5 / Folio L20-38

LIGHTOLIER®

