

READ AND UNDERSTAND THESE INSTRUCTIONS BEFORE INSTALLING FIXTURE

This fixture is intended for installation in accordance with the National Electrical Code and local regulations. To assure full compliance with local codes and regulations, check with your local electrical inspector before installation. To prevent electrical shock, turn off electricity at fuse box before proceeding.

Retain these instructions for maintenance reference.

INSTRUCTION SHEET NO.

IS:9147

0395 Page 1 of 1

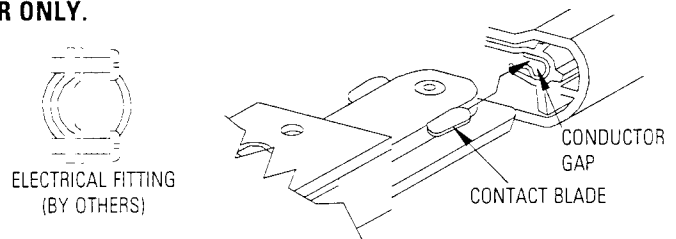
SURFACE FEED CONNECTOR FOR USE WITH PROFILE TRACK SYSTEM ONLY

WARNING:

- **TURN OFF POWER AT FUSE BOX BEFORE INSTALLING ELECTRICAL CONNECTOR AND TRACK.**
- **DO NOT USE ELECTRICAL CONNECTOR AS A CONDUIT SUPPORT. INDEPENDENT CONDUIT SUPPORTS (SUCH AS CONDUIT STRAPS) MUST BE USED TO ATTACH THE CONDUIT INSTALLATION TO THE BUILDING STRUCTURE.**
- **OBSERVE POLARITY; WHITE NEUTRAL WIRE MUST BE CONNECTED TO THE TERMINAL MARKED "NEUT" IN THE ELECTRICAL CONNECTOR.**
- **USE 12 GA. OR 14 GA. SOLID WIRE IN ELECTRICAL CONNECTOR ONLY.**

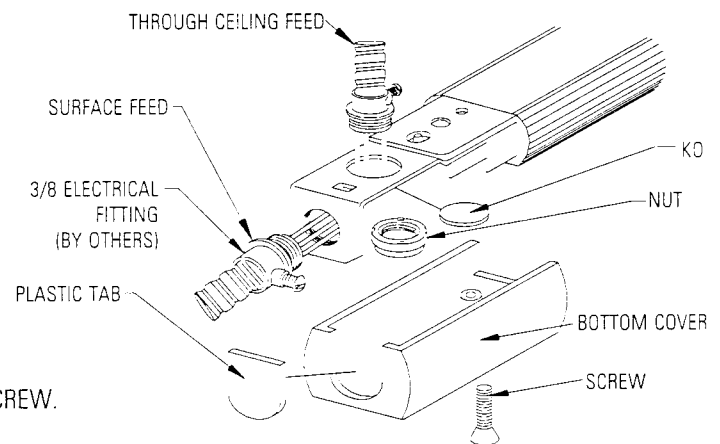
A. INSTALLING SURFACE FEED CONNECTOR.

1. Point the POLARITY TAB away from the BEAD ON the track.
2. Insert SURFACE FEED CONNECTOR into track. Ensure CONTACT BLADES insert into the GAP of the TRACK COPPER CONDUCTOR.
3. Tighten LOCKING SCREW.



B. DIRECT POWER FEED USING SURFACE CONDUIT.

1. Remove BOTTOM COVER by removing SCREW (retain).
2. Remove PLASTIC TAB from BOTTOM COVER.
3. Screw the ELECTRICAL FITTING into the METAL PLATE of the Surface Feed Connector.
4. Pass Supply LEADS through ELECTRICAL FITTING and secure conduit to ELECTRICAL FITTING.
5. Strip and form Supply LEADS to fit into SURFACE FEED CONNECTOR. Fasten Supply LEADS to SCREW TERMINALS; NEUTRAL (WHITE) LEAD to terminal marked "NEUT". GROUND LEAD to TERMINAL marked "GND". HOT (BLACK) LEAD to BRASS SCREW.
6. Fasten BOTTOM COVER to SURFACE FEED CONNECTOR using SCREW.

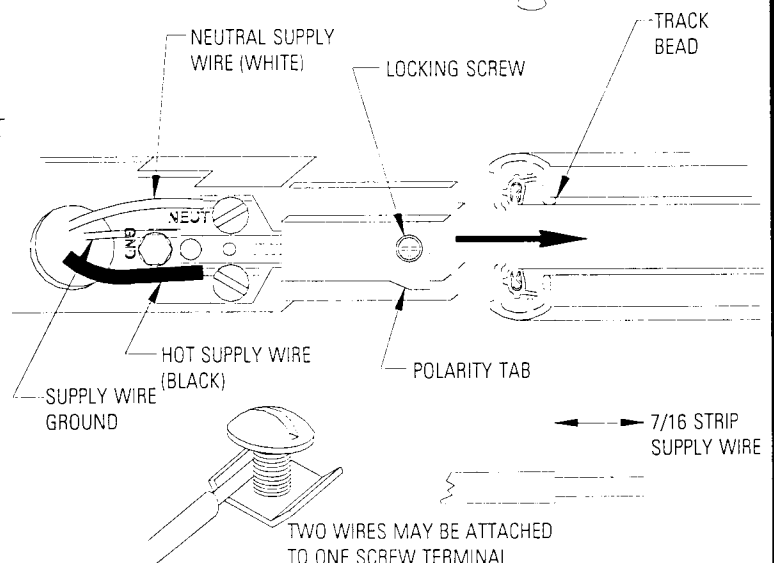


C. DIRECT POWER FEED FROM ABOVE CEILING

1. Remove BOTTOM COVER by removing SCREW (retain).
2. Remove Knock Out from METAL PLATE.
3. Secure ELECTRICAL FITTING TO METAL PLATE using the NUT provided.

NOTE: Special care must be taken when making the hole in the mounting surface to prevent the hole from being visible when the track is mounted. The screws on the ELECTRICAL FITTING may have to be cut to conceal the mounting hole.

4. Follow instruction 4, 5 and 6 above.



D. POWER FEED FROM STEM KIT

1. Remove BOTTOM COVER by removing SCREW.
2. Remove KNOCK OUT from the TOP METAL PLATE.
3. Pass SUPPLY LEADS through KNOCK OUT HOLE.
4. Follow instructions 5 and 6 above.

LIGHTOLIER®

FALL RIVER, MASSACHUSETTS, 02720
MONTREAL, QUEBEC, CANADA