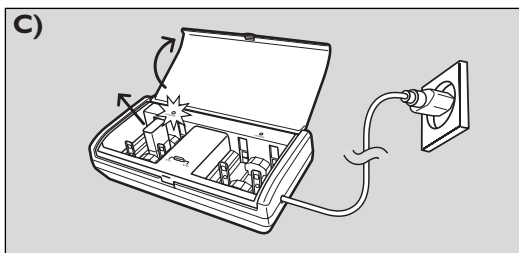
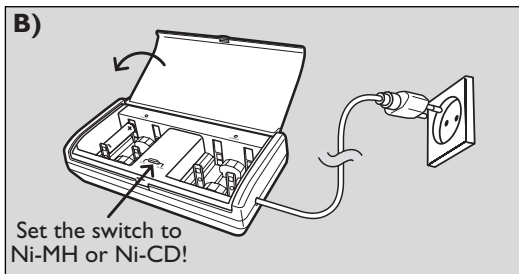
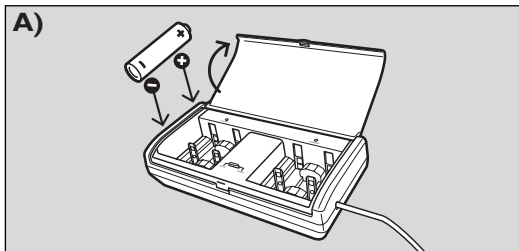


SCB2105NB

- EN** User Manual
- FR** Manuel d'utilisation
- ES** Guía de usuario
- DE** Bedienungsanleitung
- NL** Gebruikershandleiding
- IT** Manuale d'uso
- PT** Manual do utilizador
- GR** Οδηγός χρήσης
- TR** Kullanım kılavuzu
- DK** Brugervejledning
- SV** Användarhandbok
- FI** Käyttöohje
- PL** Instrukcja obsługi
- CS** Uživatelská příručka
- SK** Návod na použitie
- HU** Felhasználói kézikönyv
- RU** Руководство по эксплуатации



PHILIPS



D)

Battery charging times:

Battery size	Battery capacity (mAh)	Approx. charging time
AA Ni-MH	2600 mAh	12 ½ hrs
AA Ni-MH	2300 mAh	10 ¾ hrs
AA Ni-MH	1800 mAh	8 ½ hrs
AA Ni-MH	1300 mAh	6 ¼ hrs
AAA Ni-MH	700 mAh	8 ½ hrs
9VNi-MH	170 mAh	13 hrs
C Ni-MH	2200 mAh	9 ¾ hrs
D Ni-MH	4800 mAh	21 ¼ hrs
AA Ni-Cd	600 mAh	7 ¾ hrs
AA Ni-Cd	800 mAh	10 ½ hrs
AA Ni-Cd	1000 mAh	13 ½ hrs

SCB2105NB Universal Charger

EN

Important Safety Instructions:

Save these instructions - this manual contains important safety and operating instructions for this charger. Before using your charger read all instructions and cautionary markings on the charger, the batteries to be charged and the products that use the batteries.

Warning:

- Use to charge Ni-MH and Ni-Cd batteries only. Do not charge Alkaline, Zinc Carbon, Lithium or any other type of battery not specified on the charger. Other types of batteries might burst or leak causing personal injury.
- For proper battery insertion, please observe pole indications (+/-). See fig. A.
- Do not dispose of in fire, short circuit or open.
- Charge new batteries before using.
- Never alter the AC cord or plug.
- Do not operate the charger if it has been subjected to shock or if it is damaged.
- Do not disassemble the charger.
- To avoid risk of electric shock, unplug the charger from the electrical outlet before cleaning or when not in use.
- This battery charger is for indoor use only. Do not expose the charger to rain or excessive moisture. Keep the charger away from dust and dirt, which can cause premature wear of parts or harm its normal operation.
- Never use the charger as a power source for any electrical equipment.
- Do not incinerate, disassemble or short circuit batteries since they may burst or release toxic materials.
- This charger is not intended for use by young children or infirm persons without supervision.
- To reduce the risk of damage to the AC plug and cord, disconnect the charger by pulling the plug and not the cord.
- Do not operate the charger if cord or plug is damaged.
- Do not charge AAA and AA batteries in the same slot.
- Charge Ni-Cd and Ni-MH batteries separately.
- Do not charge damaged or leaking batteries.

Care:

- Wipe the charger with a damp cloth occasionally without harsh chemicals, cleaning solvents or strong detergents.
- Charger and batteries must be disposed of separately. Inform yourself about the separate collection system for electrical and electronic products.

Operating Instructions

General charging guidelines

- At the same time you can charge 2 or 4 AA, AAA, C or D batteries or 2 9V batteries.
- You can charge NiCd or NiMH batteries. Set the Ni-Cd / Ni-MH switch in the correct position (Ni-Cd or Ni-MH). See fig. B.
- Make sure batteries in each pair of slots (1/2 and/or 3/4) are identical (same capacity, size and chemistry type).
- To keep your batteries in the best condition, you have to limit the charging time according to the charging table. See fig. D. You can limit the charging time by disconnecting the plug from the outlet and remove the batteries.
- For long battery life, only charge empty batteries.
- When charging, ambient temperature should be between 0°C and 40°C (32°F and 104°F).

Note: It is normal for the unit and the batteries to become warm while charging.

Charging batteries

- 1** Lift up the charger cover and insert batteries into the battery charger. See fig. A.
- 2** Set the Ni-Cd / Ni-MH switch in the correct position (Ni-Cd or Ni-MH). See fig. B.
- 3** Connect the plug into a household electric outlet. See fig. B.
 - > The CHARGE LED(s) light(s) up red indicating that charging is in progress.
 - > If the batteries are not installed correctly, the CHARGE LED(s) will not light and the charger will not start charging.
 - > When the batteries (AA, AAA, C or D) are fully charged, the CHARGE LED(s) go(es) out and the charger switches off.
 - > When charging 9V batteries the CHARGE LED(s) will remain lit until the charging is stopped manually. See fig. C.
 - Make sure not to exceed the charging time for 9V batteries. See fig. D.
- 3** When you are going to use the batteries, disconnect the plug from the outlet and remove the batteries. See fig. C. Always unplug between charges!

Battery charging times: See fig. D.

CE 0682

Specifications are subject to change without notice.
Trademarks are the property of Koninklijke Philips Electronics N.V. or their respective owners.
© 2008 Koninklijke Philips Electronics N.V. All rights reserved.

www.philips.com

Additional information (including warranty conditions) available at our website:

www.philips.com/support

Specifications subject to change without notice.
All dimensions shown are approximate.

Visit our website at: www.philips.com