

# Paralyte 2448 **PLA2G18LP332**

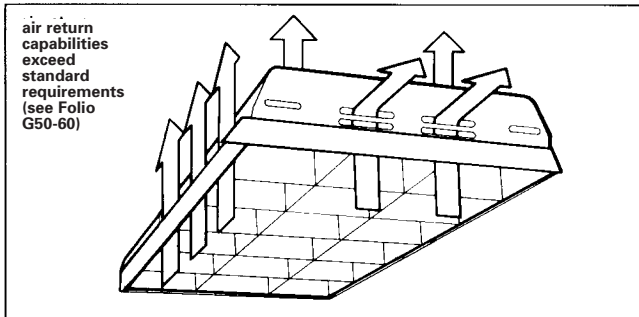
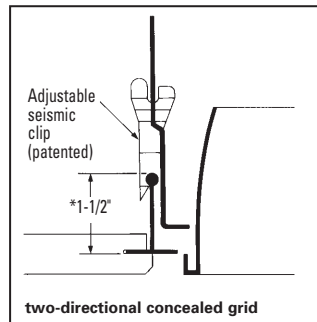
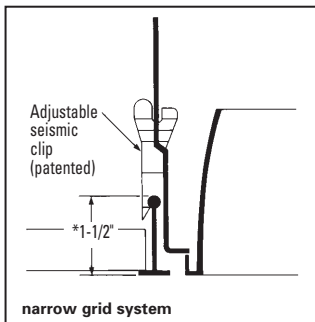
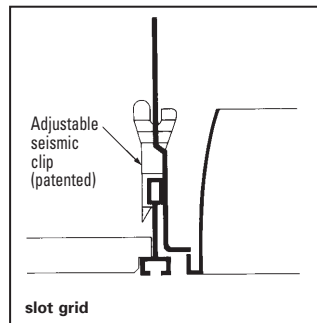
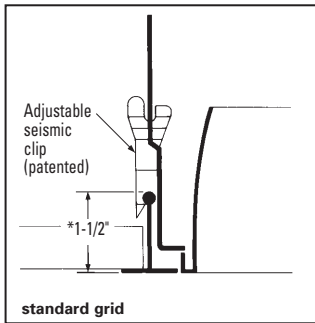
## Features

- 23" x 47" louver
- Efficiency 76.1%.
- One fixture fits 50 different G type and T type ceiling systems.
- Only 5 1/2" deep housing.
- Automatic engaging adjustable seismic clips.
- Individual lamp compartments.
- Pre-anodized aluminum vertical grain parabolic louver.
- 3 1/8" deep louver.
- Low iridescence semi-specular aluminum, standard.
- Spring-loaded latches.
- Protective film dust guard.
- UL-Listed twin knockout access plate.
- Not for continuous row mounting.

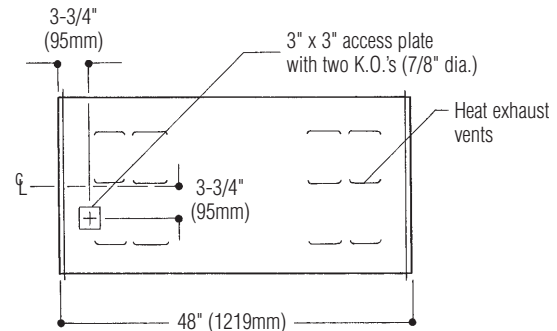
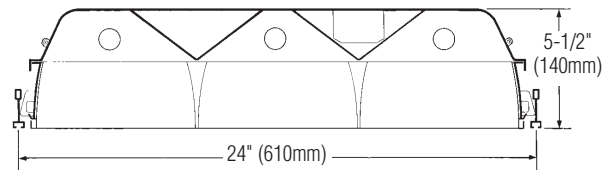


## Mounting Methods

\*If less than 1 1/2", STC spacer is required, 2 each end.



## Dimensions



NOTE: Fixtures may be used for static or air return applications.

## Job Information

## Type:

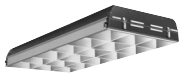
**Job Name:**

**Cat. No.:**

**Lamp(s):**

**Volts/Ballast:**

**Lightolier** a Genlyte Thomas Company [www.lightolier.com](http://www.lightolier.com)  
 Technical Information: (978) 657-7600 • Fax (978) 658-0595  
 631 Airport Road, Fall River, MA 02720 • (508) 679-8131 • Fax (508) 674-4710  
 We reserve the right to change details of design, materials and finish.  
 © 2003 Genlyte Thomas Group LLC (Lightolier Division)  
 A0902 **Section 2/Folio G50-63 Rev. A**



# Paralyte 2448 PLA2G18LP332

2' x 4' Recessed Fluorescent, 3-1/8" Deep, 18 Cell Parabolic Louver  
Static and Air Return 3 Lamp, T8 or T12

## Photometry

Model No. PLA2G18LP33212003

LER=FP-67.2 IW - 85 BF - 0.88

Comparative yearly lighting energy cost per 1000 lumens=\$3.57

**GT TESTING LABORATORY**  
45 Industrial Way  
Wilmington, MA 01897  
(978) 657-7600

REPORT NO.: G98032 DATE: 04-07-1998  
CATALOG NO.: PLA2G18LP33212003  
LAMP(S): 3 F32T8, EACH RATED 2850 LUMENS.  
LUMINAIRE: 2X4 RECESSED PARABOLIC TROFFER  
WITH LOW ENERGY ELECTRONIC BALLAST  
B3321120L BALLAST = 75.46 W  
BALLAST FACTOR = 0.82

CANDELA DISTRIBUTION FLUX

0.0	22.5	45.0	67.5	90.0
0	2452	2452	2452	2452
5	2452	2446	2443	2446
15	2339	2347	2377	2418
25	2147	2173	2306	2445
35	1879	1957	2179	2388
45	1537	1712	2254	2449
55	1100	1418	1323	959
65	443	513	464	638
75	10	10	10	9
85	3	3	3	3
90	0	0	0	0

ZONAL LUMEN SUMMARY

ZONE	LUMENS	%LAMP	%FIXT
0-30	1975	23.1	30.3
0-40	3369	39.4	51.8
0-60	6006	70.3	92.3
0-90	6508	76.1	100.0
90-180	0	0.0	0.0
0-180	6508	76.1	100.0

TOTAL LUMINAIRE EFFICIENCY = 76.1 %  
TOTAL REFLECTANCE OF PAINT = 90.0 %  
CIE TYPE - DIRECT

PLANE : 0-DEG 90-DEG  
SPACING CRITERIA : 1.2 1.7  
SHIELDING ANGLES : 65 65  
PLANE : 0-DEG 90-DEG  
LUMINOUS LENGTH : 146.320 22.320

LUMINANCE DATA IN CANDELA/SQ M

ANGLE	AVERAGE	AVERAGE	AVERAGE
IN DEG	0-DEG	45-DEG	90-DEG
45	3258.	4777.	4845.
55	2874.	3457.	2271.
65	1571.	1645.	3053.
75	58.	58.	46.
85	52.	52.	52.

THIS REPORT IS BASED ON PUBLISHED INDUSTRY PROCEDURES. FIELD PERFORMANCE MAY DIFFER FROM LABORATORY PERFORMANCE.

coefficients of utilization — zonal cavity method (effective floor cavity reflectance 0.20)

	RF	20	20	20	20	20	20	20	20	
	RC	80	50	30	50	30	10	50	30	10
	RW	70	50	30	50	30	10	50	30	10
room cavity ratio	1	84	82	79	77	75	73	74	72	71
2	78	73	68	69	65	62	66	63	61	61
3	72	65	59	61	57	53	59	56	53	53
4	66	58	52	55	50	46	53	49	46	46
5	61	52	45	49	44	40	48	43	40	40
6	56	47	40	45	39	35	43	39	35	35
7	52	42	36	41	35	31	39	35	31	31
8	48	38	32	37	32	28	36	31	28	28
9	45	35	29	34	29	25	33	28	25	25
10	42	32	27	31	26	23	31	26	23	23

visual comfort probability (rated lumens per lamp 3150.)

room size		ceiling height				ceiling height			
W	L	8.5	10.0	13.0	16.0	8.5	10.0	13.0	16.0
20	20	74	73	70	79	73	71	73	75
20	30	75	76	71	69	74	71	71	68
20	40	75	76	72	72	74	71	71	70
20	60	75	76	72	72	74	72	71	70
30	20	74	77	71	77	74	76	73	74
30	30	75	79	73	67	74	76	72	67
30	40	75	77	73	71	74	76	72	69
30	60	75	78	73	71	74	76	73	70
30	80	75	78	73	71	74	76	73	70
40	20	75	77	74	78	74	76	77	75
40	30	75	77	76	68	74	76	76	67
40	40	75	78	77	72	74	76	76	70
40	60	75	76	77	72	74	76	76	71
40	80	75	76	76	72	74	75	76	71
40	100	75	76	76	72	75	75	76	71
60	30	75	78	76	71	74	76	76	70
60	40	75	76	77	73	74	76	76	72
60	60	75	76	76	74	74	75	75	73
60	80	75	76	76	74	75	75	75	73
60	100	76	76	76	74	75	75	75	73
100	40	75	76	75	74	74	75	76	73
100	60	76	76	76	74	75	75	75	73
100	80	76	76	76	74	75	75	75	73
100	100	76	76	76	74	75	75	75	73

## Ordering Information

Explanation of Catalog Number. Example: PLA2G18LP33212003GLR

<b>PL</b> Paralyte 2448: 3-1/8" Deep Parabolic Precision Contoured Pre-anodized Aluminum Louver	<b>A</b> Body Style: A= Air Handling /Static	<b>2</b> Fixture Width	<b>G</b> Ceiling Type: G=Grid (lay-in T bar)	<b>18</b> Number of Cells	<b>L</b> Louver Finish: L = Low Iridescence Semi-Specular (standard) W = White Paint	<b>S</b> Ballast Cover: P = Dual V Reflector S = Single V Reflector (4 lamp - S Reflector only)	<b>3</b> Lamp Quantity: 3 or 4 Lamps	<b>32-T8</b> Lamp/Fixture Length: 32-T8 34-T12 (Nominal 48")	<b>120 or 277</b> Voltage:	<b>1 &amp; 2 Lamp Mag. T12</b> Ballast Type: LE <20THD SO* H1* O3* H3* O4* H4* PS -	<b>Options:</b> Add appropriate suffix to catalog no., ie: (GLR)
---	--	---------------------------	--	------------------------------	--	--	--	---	-------------------------------	--	---

\*Instant Start Standard  
Other dimming options. Consult factory.

## Options & Accessories

**Prewiring:** 3/8" factory prewired cable (three no. 18 AWG leads, 6' long), Suffix: **FF6**, (Four no. 18 AWG leads, 6' long), Suffix: **FF14**.

**Fusing:** Internal fast-blow fusing. Suffix: **GLR**.

Internal slow-blow fusing. Suffix: **GMF**.

**Fluorescent Emergency Lighting System:** Factory-installed emergency power battery pack with charger and inverter, concealed in fixture channel. Operates one fluorescent lamp at reduced light output for 90 minutes. Suffix: **EM**.

**Radio Interference Filter:** 120 or 277 volt, 50 or 60 Hz.

One per fixture. Suffix: **R**. One per ballast. Suffix: **B**.

**Electrical Options:** Special wiring, fusing or dimming ballasts and installed lamps are available, consult your Lightolier representative or factory.

**T-Bar Spacer:** If T-bar is less than 1-1/2" deep, order Catalog Number: **STC**. 2 each end is required.

## Specifications

**Performance:** In an installation of 3 lamp 32W luminaires in a room cavity ratio of 1, with reflectance of 80% ceiling, 50% wall, 20% floor, the C.U shall not be less than 82. To prevent glare the VCP shall not be less than 74 either lengthwise or crosswise (at 100fc level) and the average brightness at 65° shall not exceed 1645 candelas per square meter. To control veiling reflections, luminaire output in the 30°-90° zone shall not be less than 69.7%.

## Specifications (continued)

**Air Return:** Designed to provide optimum air return. Air is returned through the lamp compartment for all ceiling systems and direct to plenum through slots in slot grid and narrow grid ceiling systems.

**Materials:** Chassis parts are die-formed code gauge cold rolled steel. **Housing** is embossed for rigidity with all edges turned up for safe handling. **Louver** is pre-anodized aluminum (Coilzak® or equal).

**Finish:** Louver—semi-specular anodized low iridescence, vertical grain reflector sheet. **Cavity**—white baked polyester minimum 86% reflectance. Phosphate undercoating. **Chassis exterior**—black baked polyester enamel.

**Electrical:** Thermally protected class "P" ballast C.B.M. approved, non-PCB. If K.O. is within 3" of ballast, use wire suitable for at least 90°.

**Labels:** I.B.E.W./UL and ULc Listed.

## Job Information Type:

**Lightolier** a Genlyte Thomas Company www.lightolier.com  
Technical Information: (978) 657-7600 • Fax (978) 658-0595  
631 Airport Road, Fall River, MA 02720 • (508) 679-8131 • Fax (508) 674-4710  
We reserve the right to change details of design, materials and finish.  
© 2003 Genlyte Thomas Group LLC (Lightolier Division)  
A0902 **Section 2/Folio G50-63 Rev. A**

**LIGHTOLIER**