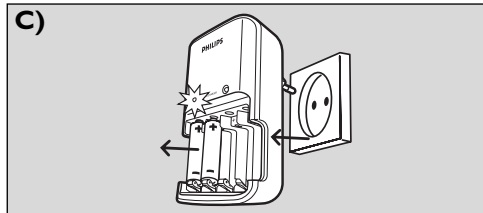
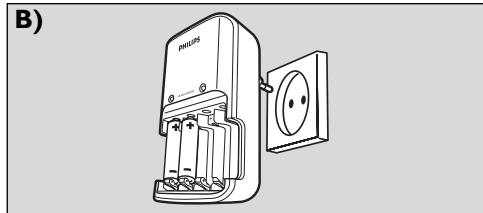
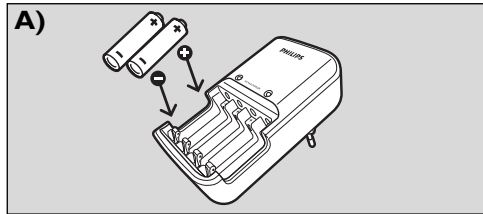


EN	User manual
FR	Mode d'emploi
ES	Instrucciones de manejo
DE	Bedienungsanleitung
NL	Gebruiksaanwijzing
IT	Istruzione per l'uso
PR	Manual de utilização
GB	Οδηγίες χρήσεως
TR	Kullanım talimatları
BK	Vejlledning
SV	Bruksanvisning
EF	Käyttöohje
PL	Instrukcja obsługi
CZ	Návod k použití
SK	Užívateľská príručka
HU	Használati utasítás
RU	Инструкции по использованию

SCB2000NB  
SCB2025NB  
SCB2050NB  
SCB2075NB



**PHILIPS**



**D) Battery charging times:**

Battery size	Battery capacity (mAh)	Approx. charging time
AA Ni-MH	2600 mAh	17 hrs
AA Ni-MH	2450 mAh	16 hrs
AA Ni-MH	2100 mAh	13 ¾ hrs
AA Ni-MH	1800 mAh	11 ¾ hrs
AA Ni-MH	1300 mAh	8 ½ hrs
AAA Ni-MH	700 mAh	10 hrs

**Important Safety Instructions:**  
Save these instructions - this manual contains important safety and operating instructions for this charger. Before using your charger read all instructions and cautionary markings on the charger, the batteries to be charged and the products that use the batteries.

- Warning:**
- Use to charge Ni-MH batteries only. Do not charge Alkaline, Zinc Carbon, Lithium or any other type of battery not specified on the charger. Other types of batteries might burst or leak causing personal injury.
  - For proper battery insertion, please observe pole indications (+/-). See fig. A.
  - Do not dispose of in fire, short circuit or open.
  - Charge new batteries before using.
  - Never alter the plug.
  - Do not operate the charger if it has been subjected to shock or if it is damaged.
  - Do not disassemble the charger.
  - To avoid risk of electric shock, unplug the charger from the electrical outlet before cleaning or when not in use.
  - This battery charger is for indoor use only. Do not expose the charger to rain or excessive moisture. Keep the charger away from dust and dirt, which can cause premature wear of parts or harm its normal operation.
  - Never use the charger as a power source for any electrical equipment.
  - Do not incinerate, disassemble or short circuit batteries since they may burst or release toxic materials.
  - This charger is not intended for use by young children or infirm persons without supervision.
  - Do not operate the charger if the plug is damaged.
  - Do not charge AAA and AA batteries in the same slot.
  - Do not charge damaged or leaking batteries.

- Care:**
- Wipe the charger with a damp cloth occasionally without harsh chemicals, cleaning solvents or strong detergents.
  - Charger and batteries must be disposed of separately. Inform yourself about the separate collection system for electrical and electronic products.

**Operating Instructions**

- General charging guidelines**
- At the same time you can charge 2 or 4 AA/AAA batteries. When charging only two batteries, insert them in the first two battery slots on the left side.
  - For long battery life, only charge empty batteries.
  - When charging, ambient temperature should be between 0°C and 40°C (32°F and 104°F).
  - You can charge batteries with different capacity (mAh) and size (AA/AAA) at the same time.
  - Make sure batteries in each pair of slots (1/2 and/or 3/4) are identical (same capacity and size).

*Note: It is normal for the unit and the batteries to become warm while charging.*

- Charging batteries**
- 1 Insert batteries in the charger. See fig. A.
  - 2 Plug the charger into a household electric outlet. See fig. B.  
→ The red LED indicator(s) will remain on during charging and switch(es) off when the batteries are fully charged. See fig. C.
  - 3 When finished, unplug the charger from the power source and remove the batteries. See fig. C. Always unplug between charges!

**Battery charging times:** See fig. D.

Additional information (including warranty conditions) available at our website:

[www.philips.com/support](http://www.philips.com/support)

Specifications subject to change without notice.  
All dimensions shown are approximate.

Visit our website at: [www.philips.com](http://www.philips.com)

CE 0682 0