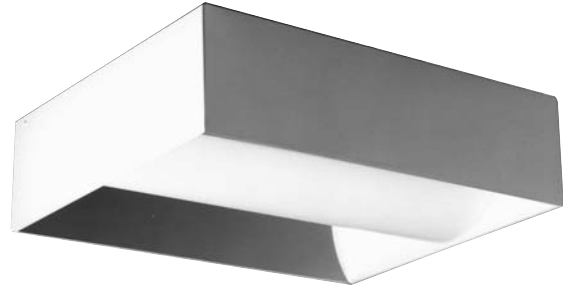
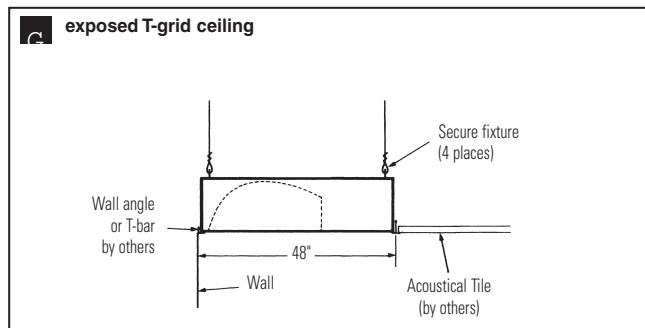
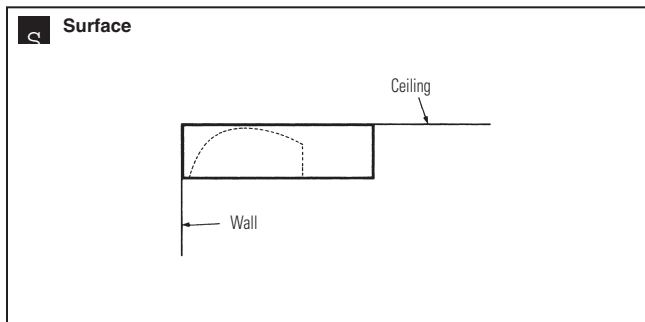


## Features

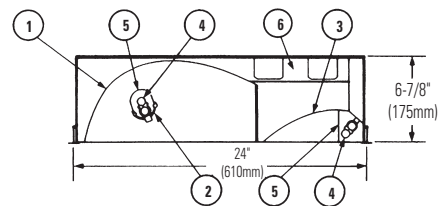
- Three lighting functions with integral ambient, reading and optional nurse's night light.
- Precise light control for glare free patient environment.
- Installs as a one-piece unit.
- Recessed or surface mounted to ceiling against wall which eliminates damage to fixture from hospital equipment attached to bed.
- 6-7/8" deep.
- All lamps are enclosed.
- All twin tube T5 lamps are accessible for relamping without tools.
- Optional low voltage electronic sequential switch mounted in fixture for ambient and reading light controlled with pillow speaker (optional by others).
- Optional night light.
- Meets NYC Code requirements. Chicago Plenum requirements available.



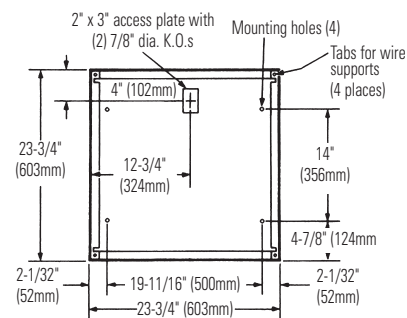
## MOUNTING METHODS



## DIMENSIONS



1. Reading light with low iridescence anodized semi-specular aluminum reflector.
2. Extruded aluminum lamp baffle.
3. Ambient light with low iridescence anodized semi-specular aluminum reflector.
4. Twin tube T5 lamps (2).
5. Clear acrylic lens.
6. Ballast compartment.



## Job Information

Type:

Job Name:

Cat. No.:

Lamp(s):

Volts/Ballast:

Lightolier a Genlyte company www.lightolier.com  
 Technical Information: (978) 657-7600 • Fax (978) 658-0595  
 631 Airport Road, Fall River, MA 02720 • (508) 679-8131 • Fax (508) 674-4710  
 We reserve the right to change details of design, materials and finish.  
 © 2007 a Genlyte company Section 8/Folio R40-12 Rev. B



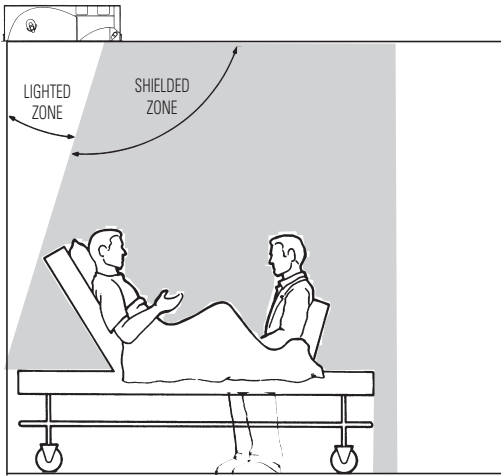
### Ambient Light

Indirect illumination from wall directly behind patient provides glare-free lighting.

No direct glare to patient. (Light is directed towards wall.)

No direct glare to patient's visitor.

No direct glare to adjacent patients. (3 footcandles maximum on wall behind adjacent patient's bed.)



		AMBIENT LIGHT ON						ADJACENT MD*4 OFF															
45	110	140	110	45	14	4	2	1	1	1	1	45	110	140	110	45	14	4	2	1	1	1	1
44	83	95	83	44	19	7	3	2	2	1	1	44	83	95	83	44	19	7	3	2	2	1	1
30	45	50	45	30	16	8	4	3	3	2	1	30	45	50	45	30	16	8	4	3	3	2	1
16	20	22	20	16	11	7	4	3	3	2	1	16	20	22	20	16	11	7	4	3	3	2	1
7	9	9	7	7	4	3	2	2	1	1	1	7	9	9	7	7	4	3	2	2	1	1	1
3				3	2	2	1	1				3				3	2	2	1	1			
					1	2	1	1									1	2	1	1			

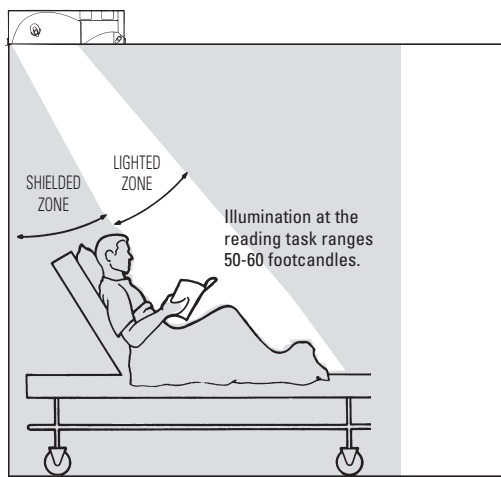
### Reading Light

Eliminates reflected glare from reading material (over shoulder illumination).

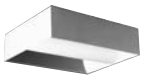
No direct glare to patient or visitors. (7 footcandles maximum at head of bed. 15 footcandles maximum at foot of bed.)

Controls light directly onto patient's bed.

No reading light spill-over to adjacent bed (2 foot/candles maximum at head of adjacent patient's bed.)

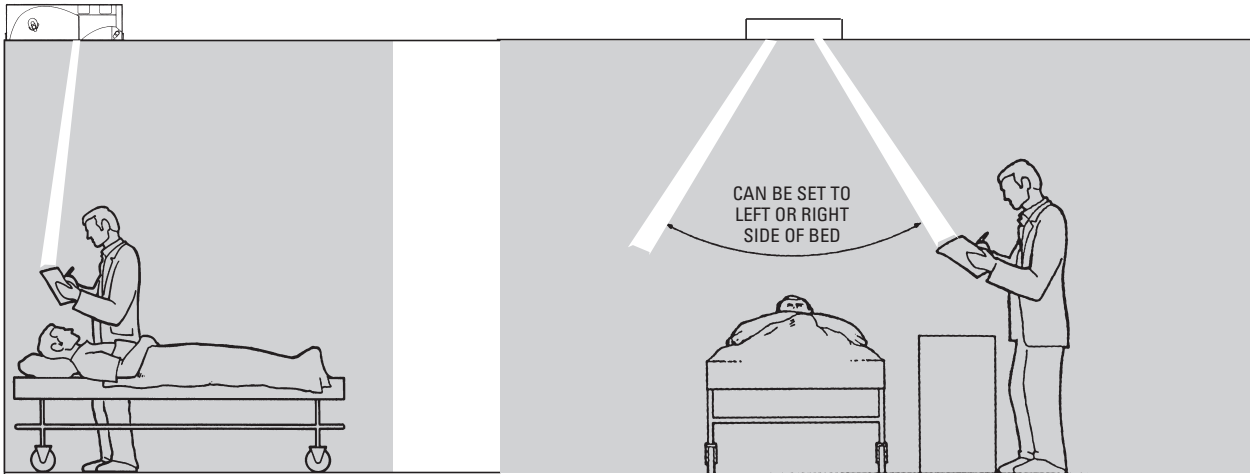


		READING LIGHT ON						ADJACENT MD*4 OFF									
		FOOTCANDLES ON BEDS						FOOTCANDLES ON BEDS									
		WALL						WALL									
3" ↓	6" ↓	2	2	2	2	2	1	1	1	1	1	1	1	1	3" ↓	6" ↓	
		3	3	3	3	3	2	2	2	1	1	1	1	1	1		
		6	7	7	7	6	4	3	3	2	2	1	1	1	1		
		33	38	39	38	33	23	16	12	9	5	3	3	2	2		
		30	38	38	38	30	23	15	12	8	6	3	3	2	2		
		14	15	15	15	14	11	9	7	5	4	2	2	2	2		
		5	5	5	5	5	5	4	4	2	2	1	1	1	1		
		BED						BED									
		Illumination at the reading task range 50-60 footcandles						Illumination at the reading task range 50-60 footcandles									
								12"									

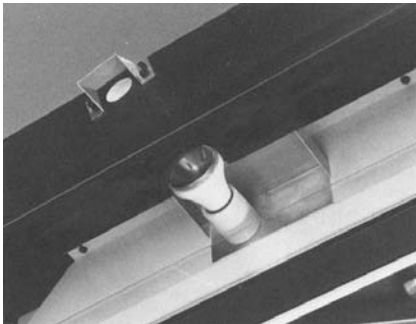


### Nurses Night Light (Optional)

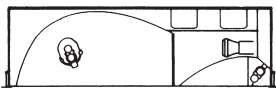
Lights night stand between beds.  
Field adjustable for either right or left side of patient's bed.  
No glare to any patient.  
Wired for independent switching.



### Options



120V medium base narrow spot,  
50W reflector lamp



Specular anodized aluminum mirror,  
adjusts to left or right side of bed

**Nurse's night light.** Suffix: **NL**

**Night Light:** 12V, 3 watt, cool white LED (50,000 hours life) (supplied with fixture). Suffix: **LD**



**Pillow speaker (by others)**

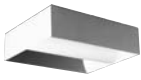


**Sequential Switch.** Suffix: **SW**

MD\*4's optional low voltage (1-3 volts) sequential switch mounted in the fixture is listed in compliance with UL 544 for medical and dental equipment. Two red wires coming from the fixture can be wired to a wall receptacle (by others) for use with that manufacturer's pillow speaker. The pillow speaker is used to control the television, call the nurse and control the lighting. To control the lighting it should be specified to have a normally open contact switch.

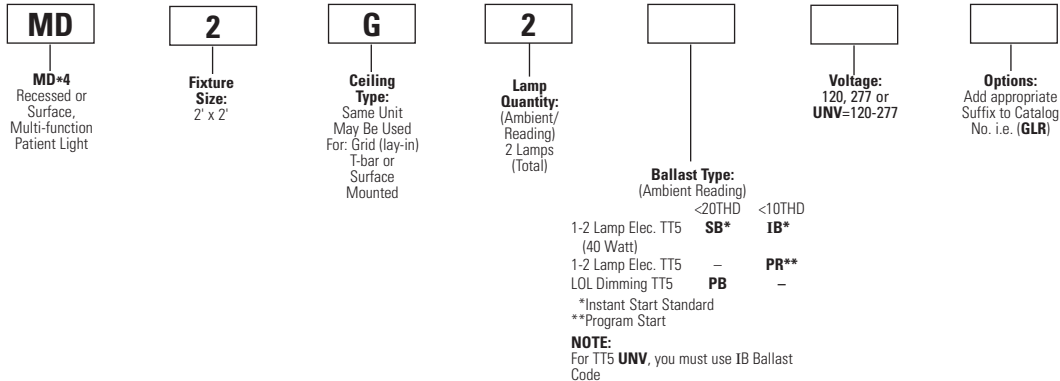
Pressing this switch on the pillow speaker the first time, turns the ambient light on; pressed a second time, turns the reading light on and the ambient light off; pressed a third time, turns both the ambient and reading lights on; pressed a fourth time turns both lights off. Pressing the button again repeats the cycle.

Should the patient's bed be rolled away from the wall, the pillow speaker will simply pull free from the wall receptacle avoiding any damage.



## ORDERING INFORMATION

Explanation of Catalog Number. Example: MD2G2SB120SW



## Options/Accessories

**Access Plates:** Top wiring access plate is shipped with fixture as standard. When access plates are required in advance for wiring convenience, specify separately. Catalog Number: **ACP**.

**Drywall Kit or Plaster Ceiling:** Order Catalog Number: **FK92X2**. Request Folio **OA30-10**.

**For Chicago Plenum** add Suffix: **CP**.

**Electronic Sequential Switch** (Low Voltage): Switch factory mounted in fixture for ambient and reading light convenience (controlled by pillow switch, by others). Suffix: **SW**.

**Nurses Night Light:** 120 volt medium base, narrow spot, 50W reflector lamp with specular anodized mirror, field adjustable to right or left side of patient's bed. Suffix: **NL**.

**Night Light:** 120 volt, 3 watt, cool white LED (50,000 hours life). Suffix: **LD**.

**Fusing:** Internal fast-blow fusing. Suffix: **GLR**.  
Internal slow-blow fusing. Suffix: **GMF**.

**Radio Interference Filter:** To order one RIF per fixture; Suffix: **R**. To order one RIF per ballast; Suffix: **B**.

**Electrical/Wiring Options:** Consult factory.

## Specifications:

**Materials: Chassis parts** are die-formed 20 gauge steel.

**Reading light** – Extruded aluminum lamp baffle with clear extruded acrylic shields and is removable without tools.

**Ambient light** – Clear acrylic lens that rotates open for easy relamping.

**Reflectors** (Ambient and Reading Lights): Low iridescence specular pre-anodized aluminum standard.

**Finish: Chassis exterior** – post painted white baked polyester powder.

**Electrical:** Rapid start HPF, SB (Biax type) thermally protected class "P" ballast C.B.M. certified by E.T.L. If K.O. is within 3" of ballast, use wire suitable for at least 90°.

**Labels:** I.B.E.W. UL and ULc Listed.

This product may have a mercury containing lamp. Manage in accord with Disposal Laws. See: [www.lamprecycle.org](http://www.lamprecycle.org)

## Job Information Type:

**Lightolier** a Genlyte company [www.lightolier.com](http://www.lightolier.com)  
Technical Information: (978) 657-7600 • Fax (978) 658-0595  
631 Airport Road, Fall River, MA 02720 • (508) 679-8131 • Fax (508) 674-4710  
We reserve the right to change details of design, materials and finish.  
© 2007 a Genlyte company **Section 8/Folio R40-12 Rev. B**

**LIGHTOLIER®**