

# BASIC LYTESPAN® "T" AND "X" CONNECTORS FOR USE WITH BASIC LYTESPAN® TRACK SYSTEM ONLY

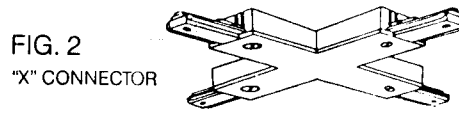
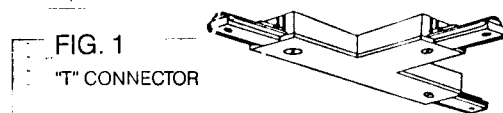
# IS:6066

RO590 Page 1 of 2

## READ AND UNDERSTAND THESE INSTRUCTIONS BEFORE INSTALLING FIXTURE.

This fixture is intended for installation in accordance with the National Electrical Code and local regulations. To assure full compliance with local codes and regulations, check with your local electrical inspector before installation. To prevent shock, turn off electricity at fuse box before proceeding.

**Retain these instructions for reference.**



The "T" and "X" CONNECTORS are track connectors designed for quick field wiring and can be used with Surface Mounted or Stem Mounted Basic Lytespan Track. Power can be fed into these CONNECTORS, see instruction B.

## CAUTION

- **TURN OFF POWER AT FUSE BOX BEFORE INSTALLING TRACK.**
- **INSTRUCTIONS FOR GROUNDING PER INSTRUCTION SHEET OF THE FEED-IN KIT MUST BE FOLLOWED. FAILURE TO DO SO MAY RESULT IN A HAZARDOUS CONDITION.**
- **USE ONLY #12 GA. SOLID WIRE IN CONNECTORS TO MAINTAIN PROPER RATING OF TRACK.**
- **OBSERVE POLARITY, WHITE (NEUTRAL) WIRE MUST BE ALONG BEAD (NEUTRAL) SIDE OF TRACK. FAILURE TO OBSERVE POLARITY MAY RESULT IN POTENTIAL ELECTRICAL HAZARD.**

## A. INSTALLATION AND POWER CONTINUITY

JUMPER WIRES are provided for power continuity.

1. Remove LIVE END (loosen screw), DEAD END COVER or COUPLER (loosen screw) from ends of TRACK UNITS to be attached to "T" or "X" CONNECTOR.
2. Remove BOTTOM COVER by loosening COVER SCREWS (Fig. 3).
3. Per track layout, mark the SCREW TERMINAL in each leg of the "T" or "X" CONNECTOR which is in line with the BEAD in the track units.
4. Install white wires into marked SCREW TERMINALS and install black wires into other SCREW TERMINALS, (see Fig. 3). Tighten securely.

- NOTE:**
- a. Each SCREW TERMINAL accepts two wires for two-way power continuity.
  - b. Where wires make right angle turns in "T" or "X" CONNECTOR, cut wires furnished to required length, strip  $\frac{7}{16}$ " and prebend wires to facilitate installation.
  - c. Use only #12 GA. solid wires in "T" or "X" CONNECTOR.
5. Insert "T" or "X" CONNECTOR into track units and tighten LOCKING SCREWS.
  6. Check that white wires are lined up with the BEAD of all track units. Fasten BOTTOM COVER to "T" or "X" CONNECTOR and tighten COVER SCREWS.

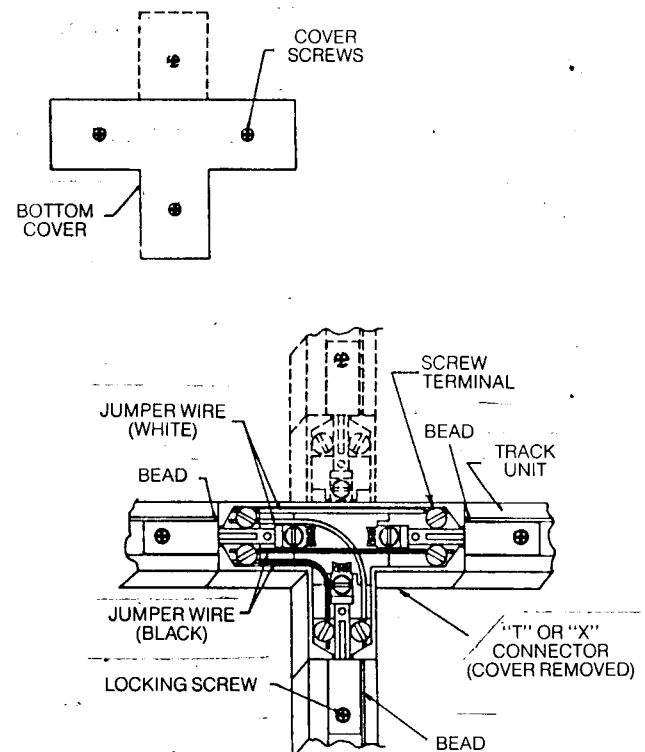
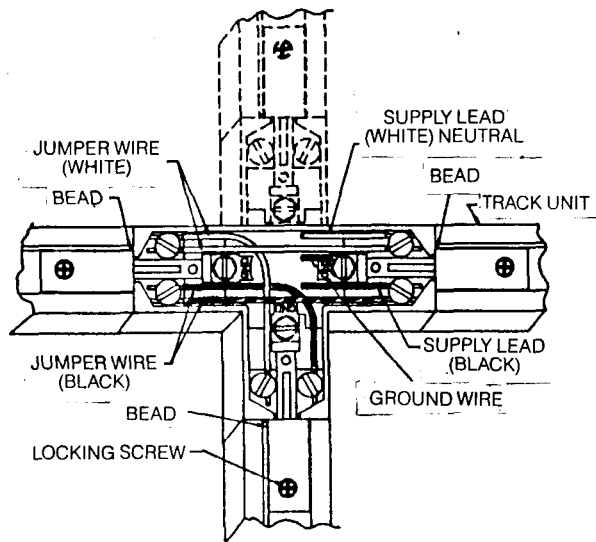


FIG. 3

**EXAMPLES OF WIRING FOR "T" AND "X" CONNECTORS**

**SINGLE POWER FEED TO ALL TRACK UNITS**

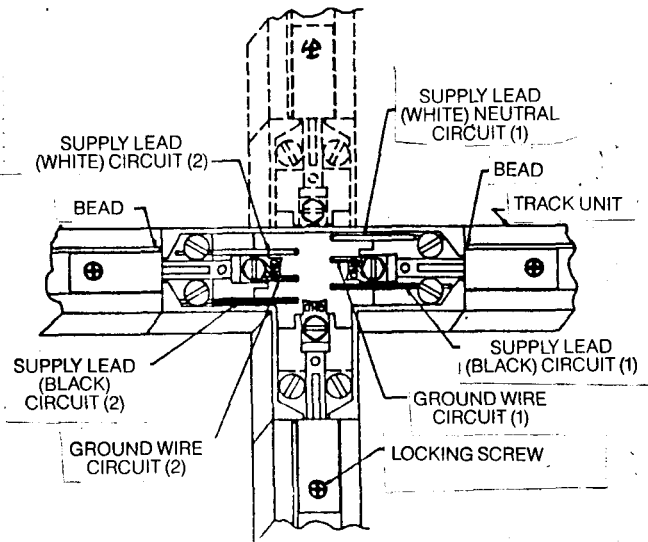


**B. POWER FEED TO "T" OR "X" CONNECTORS**

Follow the instructions for power feed to LIVE END in the instruction sheet supplied with:  
 END FEED CANOPY MOUNTING KIT.  
 FLOATING CANOPY MOUNTING KIT.  
 GRID CEILING CANOPY KIT.  
 STEM MOUNTING KIT.  
 FLOATING INVISIBLE FEED MOUNTING KIT.  
 FLOATING CANOPY KIT WITH STAND OFF CLIPS.

Power can also be fed directly into a "T" or "X" CONNECTOR from conduit or cable terminating in a 1/2-14 I.P.S. threaded male connector (see Section E of Instruction Sheet IS: 6020).

**SEPARATE POWER FEEDS TO TRACK UNITS**



**SEPARATE POWER FEEDS FROM (3) WIRE 120/240V BRANCH CIRCUIT**

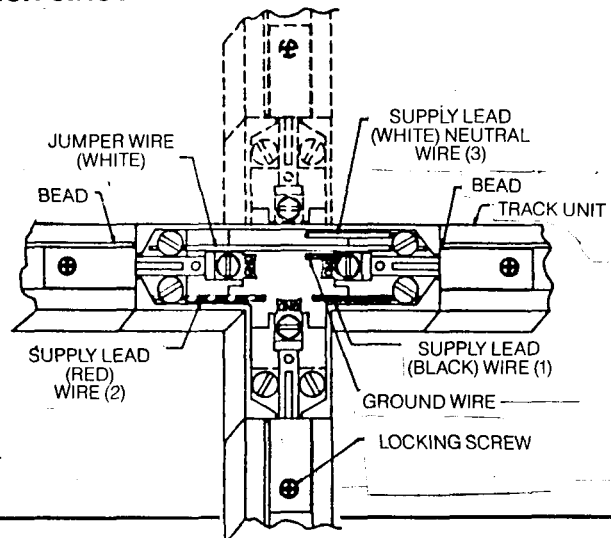


FIG. 4