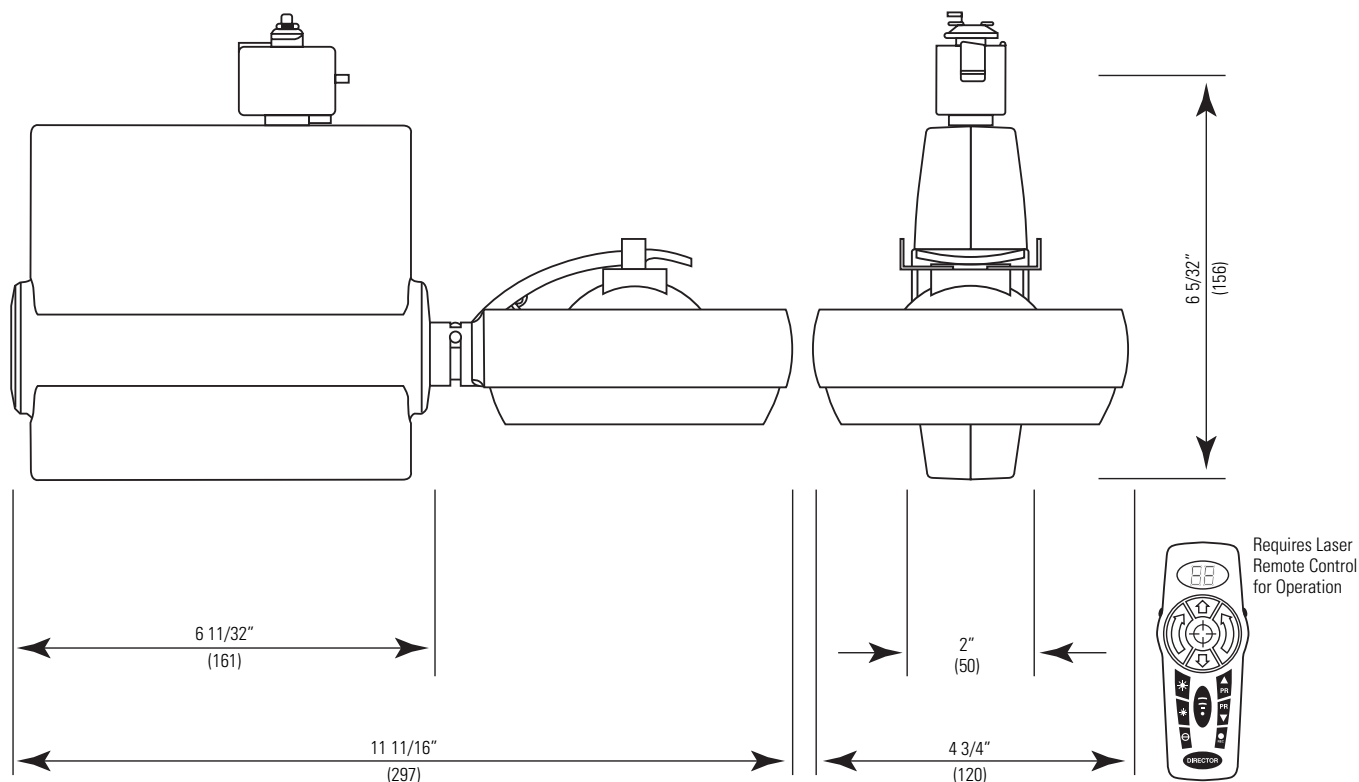


Lytespan® Track Lighting System **DRL16**

Page 1 of 2

Director® Low Voltage Spot MR16



Ordering Information

() Denotes dimensions in mm

Catalog No.	Finishes	Track Mounting	Lamp
DR2LS16WH DR2LS16BK DR2LS16SL	White Black Silver	Compatible with Lytespan Basic, Radius and Advent Track Systems; and all Multipoint and Monopoints. DO NOT USE with Extension Wands, Sloped Ceiling Adapter or ProSpec Track.	MR16, 50W Max. with cover glass

Description

Remote controlled spotlight that can be mounted anywhere along the track and remotely aimed through the use of a hand-held controller.

Features

1. Full remote control of pan and tilt movement to aim at any object below the luminaire.
2. Lamp brightness can be adjusted in 1% steps.
3. Compatible with external dimming systems.
4. Positions and dim setting can be recorded for future use.
5. Continuous movement and sequencing option.
6. Die-cast aluminum housing.
7. Electronic low voltage transformer.

Options & Accessories

Accepts 1 accessory max.

AF2 Diffusion Filters

ADF2 Color Filters

Labels

cULus Classified

Job Information

Type:

Job Name:

Cat. No.:

Lamp(s):

Notes:

Lightolier a Genlyte company

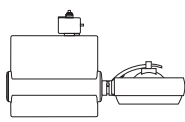
631 Airport Road, Fall River, MA 02720 • (508) 679-8131 • Fax (508) 674-4710

We reserve the right to change details of design, materials and finish.

© 2004 Genlyte Group LLC • B1004

www.lightolier.com

LIGHTOLIER®



Lytespan® Track Lighting System **DRL16**

Page 2 of 2

Director® Low Voltage Spot MR16

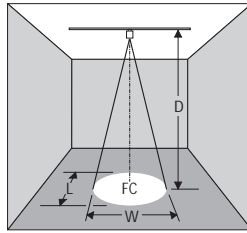
Lighting Data

Aiming Angle

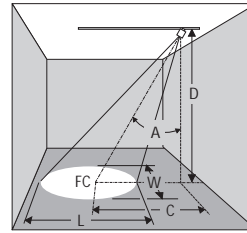
L Beam Length
W Beam Width
C Distance to center beam
D Distance
A Aiming Angle
FC Footcandles

L and **W** are the outer points where the candle power drops to 50% of the maximum. **FC** are the initial footcandles at the center of the beam.

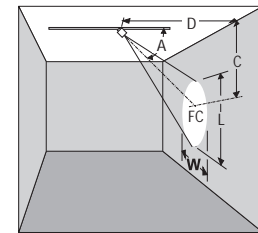
0°



30°, 45° or 60° Horizontal



30°, 45° or 60° Vertical



LAMP

	Beam Spread 50% Max CP	Beam Center C.P. Candelas	Rated Life-Hrs	0° AIMING ANGLE					A=30° AIMING ANGLE					A=45° AIMING ANGLE					A=60° AIMING ANGLE				
				D	FC	L	W		D	C	FC	L	W	D	C	FC	L	W	D	C	FC	L	W
20W MR16 (T-H) VNSP (EZS) 7°		8200	3000	7'	167	0.9'	0.9'		6'	3.5'	148	1.0'	0.8'	4'	4.0'	181	1.0'	0.7'	2'	3.5'	256	1.0'	0.5'
				10'	82	1.2'	1.2'		9'	5.2'	68	1.5'	1.3'	6'	6.0'	81	1.5'	1.0'	3'	5.2'	114	1.5'	0.7'
				13'	49	1.6'	1.6'		12'	6.9'	37	2.0'	1.7'	8'	8.0'	45	2.0'	1.4'	4'	6.9'	64	2.0'	1.0'
				16'	32	2.0'	2.0'		15'	8.7'	24	2.4'	2.1'	10'	10.0'	29	2.5'	1.7'	5'	8.7'	41	2.5'	1.2'
20W MR16 (T-H) NSP (ESX) 13°		3600	3000	6'	100	1.4'	1.4'		5'	2.9'	94	1.5'	1.3'	3'	3.0'	141	1.4'	1.0'	2'	3.5'	113	1.9'	0.9'
				8'	56	1.8'	1.8'		7'	4.0'	48	2.1'	1.8'	5'	5.0'	51	2.3'	1.6'	3'	5.2'	50	2.8'	1.4'
				10'	36	2.3'	2.3'		9'	5.2'	29	2.7'	2.4'	7'	7.0'	26	3.2'	2.3'	4'	6.9'	28	3.8'	1.8'
				12'	25	2.7'	2.7'		11'	6.4'	19	3.4'	2.9'	9'	9.0'	16	4.2'	2.9'	5'	8.7'	18	4.7'	2.3'
20W MR16 (T-H) FL (BAB) 40°		525	4000	2'	131	1.5'	1.5'		2'	1.2'	85	2.0'	1.7'	2'	2.0'	46	3.4'	2.1'	1'	1.7'	66	4.8'	1.5'
				3'	58	2.2'	2.2'		3'	1.7'	38	3.0'	2.5'	3'	3.0'	21	5.0'	3.1'	2'	3.5'	16	8.7'	2.9'
				4'	33	2.9'	2.9'		4'	2.3'	21	4.1'	3.4'	4'	4.0'	12	6.7'	4.1'	3'	5.2'	7	14.5'	4.4'
				5'	21	3.6'	3.6'		5'	2.9'	14	5.1'	4.2'	5'	5.0'	7	8.4'	5.1'	4'	6.9'	4	19.3'	5.8'
35W MR16 (T-H) NSP (FRB) 12°		6700	4000	7'	178	1.5'	1.5'		6'	3.5'	157	1.7'	1.5'	4'	4.0'	192	1.7'	1.2'	2'	3.5'	272	1.7'	0.8'
				10'	87	2.1'	2.1'		9'	5.2'	70	2.5'	2.2'	6'	6.0'	85	2.6'	1.8'	3'	5.2'	121	2.6'	1.3'
				13'	51	2.7'	2.7'		12'	6.9'	39	3.4'	2.9'	8'	8.0'	48	3.4'	2.4'	4'	6.9'	68	3.5'	1.7'
				16'	34	3.4'	3.4'		15'	8.7'	25	4.2'	3.6'	10'	10.0'	31	4.3'	3.0'	5'	8.7'	44	4.3'	2.1'
35W MR16 (T-H) SP (FRA) 20°		3900	4000	6'	108	2.1'	2.1'		5'	2.9'	101	2.4'	2.0'	3'	3.0'	153	2.2'	1.5'	2'	3.5'	122	3.1'	1.4'
				8'	61	2.8'	2.8'		7'	4.0'	52	3.3'	2.9'	5'	5.0'	55	3.6'	2.5'	3'	5.2'	54	4.7'	2.1'
				10'	39	3.5'	3.5'		9'	5.2'	31	4.3'	3.7'	7'	7.0'	28	5.1'	3.5'	4'	6.9'	30	6.2'	2.8'
				12'	27	4.2'	4.2'		11'	6.4'	21	5.2'	4.5'	9'	9.0'	17	6.6'	4.5'	5'	8.7'	20	7.8'	3.5'
35W MR16 (T-H) FL (FMW) 40°		1600	4000	4'	100	2.9'	2.9'		3'	1.7'	115	3.0'	2.5'	3'	3.0'	63	5.0'	3.1'	1'	1.7'	200	4.8'	1.5'
				6'	44	4.4'	4.4'		5'	2.9'	42	5.1'	4.2'	4'	4.0'	35	6.7'	4.1'	2'	3.5'	50	9.7'	2.9'
				8'	25	5.8'	5.8'		7'	4.0'	21	7.1'	5.9'	5'	5.0'	23	8.4'	5.1'	3'	5.2'	22	14.5'	4.4'
				10'	16	7.3'	7.3'		9'	5.2'	13	9.1'	7.6'	6'	6.0'	16	10.1'	6.2'	4'	6.9'	13	19.3'	5.8'
42W MR16 (T-H) VNSP (EZY) 9°		13100	3500	8'	205	1.3'	1.3'		7'	4.0'	174	1.5'	1.3'	5'	5.0'	185	1.6'	1.1'	3'	5.2'	182	1.9'	0.9'
				12'	91	1.9'	1.9'		10'	5.8'	85	2.1'	1.8'	7'	7.0'	95	2.2'	1.6'	4'	6.9'	102	2.6'	1.3'
				16'	51	2.5'	2.5'		13'	7.5'	50	2.7'	2.4'	9'	9.0'	57	2.9'	2.0'	5'	8.7'	66	3.2'	1.6'
				20'	33	3.1'	3.1'		15'	9.2'	33	3.4'	2.9'	11'	11.0'	38	3.5'	2.4'	6'	10.4'	45	3.8'	1.9'
42W MR16 (T-H) NFL (EYS) 27°		2400	4000	4'	150	1.9'	1.9'		3'	1.7'	173	2.0'	1.7'	3'	3.0'	94	3.1'	2.0'	1'	1.7'	300	2.3'	1.0'
				6'	67	2.9'	2.9'		5'	2.9'	62	3.3'	2.8'	4'	4.0'	53	4.1'	2.7'	2'	3.5'	75	4.6'	1.9'
				8'	38	3.8'	3.8'		7'	4.0'	32	4.6'	3.9'	5'	5.0'	34	5.1'	3.4'	3'	5.2'	33	7.0'	2.9'
				10'	24	4.8'	4.8'		9'	5.2'	19	5.9'	5.0'	6'	6.0'	24	6.1'	4.1'	4'	6.9'	19	9.3'	3.8'
50W MR16 (T-H) NSP (EXT) 14°		10200	4000	8'	159	2.0'	2.0'		7'	4.0'	135	2.3'	2.0'	5'	5.0'	144	2.5'	1.7'	3'	5.2'	142	3.1'	1.5'
				12'	71	2.9'	2.9'		10'	5.8'	66	3.3'	2.8'	7'	7.0'	74	3.5'	2.4'	4'	6.9'	80	4.1'	2.0'
				16'	40	3.8'	3.9'		13'	7.5'	39	4.3'	3.7'	9'	9.0'	45	4.5'	3.1'	5'	8.7'	51	5.1'	2.5'
				20'	26	4.9'	4.9'		15'	9.2'	28	5.3'	4.5'	11'	11.0'	30	5.5'	3.8'	6'	10.4'	35	6.2'	2.9'
50W MR16 (T-H) NFL (EXZ) 27°		3400	4000	6'	94	2.9'	2.9'		5'	2.9'	88	3.3'	2.8'	3'	3.0'	134	3.1'	2.0'	2'	3.5'	106	4.6'	1.9'
				8'	53	3.8'	3.8'		7'	4.0'	45	4.6'	3.9'	5'	5.0'	48	5.1'	3.4'	3'	5.2'	47	7.0'	2.9'
				10'	34	4.8'	4.8'		9'	5.2'	27	5.9'	5.0'	7'	7.0'	25	7.1'	4.8'	4'	6.9'	27	9.3'	3.8'
				12'	24	5.8'	5.8'		11'	6.4'	18	7.2'	6.1'	9'	9.0'	15	9.2'	6.1'	5'	8.7'	17	11.6'	4.8'
50W MR16 (T-H) FL (EXN) 40°		1850	4000	4'	116	2.9'	2.9'		3'	1.7'	134	3.0'	2.5'	3'	3.0'	73	5.0'	3.1'	1'	1.7'	231	4.8'	1.5'
				6'	51	4.4'	4.4'		5'	2.9'	48	5.1'	4.2'	4'	4.0'	41	6.7'	4.1'	2'	3.5'	59	9.7'	2.9'
				8'	29	5.8'	5.8'		7'	4.0'	25	7.1'	5.9'	5'	5.0'	26	8.4'	5.1'	3'	5.2'	26	14.5'	4.4'
				10'	19	7.3'	7.3'		9'	5.2'	15	9.1'	7.6'	6'	6.0'	18	10.1'	6.2'	4'	6.9'	14	19.3'	5.8'
50W MR16 (T-H) WFL (FNV) 55°		1150	4000	3'	128	3.1'	3.1'		3'	1.7'	83	4.6'	3.6'	2'	2.0'	102	5.7'	2.9'	1'	1.7'	144	22.3'	2.1'
				5'	46	5.2'	5.2'		5'	2.9'	30	7.8'	6.0'	3'	3.0'	45	8.6'	4.4'	2'	3.5'	36	44.5'	4.2'
				7'	23	7.3'	7.3'		7'	4.0'	15	10.7'	8.4'	4'	4.0'	25	11.4'	5.8'	3'	5.2'	16	66.8'	6.2'
				9'	14	9.4'	9.4'		9'	5.2'	9	13.7'	10.8'	5'	5.0'	15	14.3'	7.4'	4'	6.9'	9	89.1'	8.3'

Job Information

Type:

Lightolier a Genlyte company

www.lightolier.com

631 Airport Road, Fall River, MA 02720 • (508) 679-8131 • Fax (508) 674-4710

We reserve the right to change details of design, materials and finish.

© 2004 Genlyte Group LLC • B1004

LIGHTOLIER®