

READ AND UNDERSTAND THESE INSTRUCTIONS BEFORE INSTALLING FIXTURE

This fixture is intended for installation in accordance with the National Electrical Code and local regulations. To assure full compliance with local codes and regulations, check with your local electrical inspector before installation. To prevent electric shock, turn off electricity at fuse box before proceeding.

Retain these instructions for maintenance reference.

INSTRUCTION SHEET NO.

IS:C6CW

A0604

Page 1 of 2

INSTALLATION PROCEDURE FOR: C6CW SERIES 6" DIA. H.I.D. WALL MOUNT CYLINDER USED WITH C6T6V SERIES FLANGLESS REFLECTOR TRIM (ORDER SEPARATELY)

WARNING: USE ONLY REFLECTOR TRIMS PROVIDED BY LIGHTOLIER. USE OF OTHER MANUFACTURES' REFLECTOR TRIMS MAY VOID THE UNDERWRITERS LABRATORIES LISTING AND COULD CONSTITUTE A FIRE HAZARD.

CAUTION: For wet locations, in accordance with Underwriters Laboratories requirements, a line of caulking compound such as acrylic or silicone must be placed around the perimeter of CANOPY to seal water away from the outlet box and back openings.

INSTALLATION OF WALL CYLINDER TO OUTLET BOX (Fig. 1, 2, 3, & 4)

STEP 1: Attach MOUNTING PLATE to outlet box with OUTLET BOX SCREWS.

STEP 2: Pass supply leads through opening in CANOPY and CLEAT.

STEP 3: Attach CANOPY, CLEAT/GASKET to MOUNTING PLATE with (2) 1/4-20 BOLTS.

STEP 4: Make Connections. Bare Copper and/or green insulation wire(s) must be connected to SUPPLY GROUND. Connect WHITE BALLAST LEAD to NEUTRAL (WHITE) SUPPLY LEAD. Connect BLACK BALLAST LEAD to HOT SUPPLY LEAD. Use wire nuts (local hardware items).

STEP 5: Install SET SCREWS loosely. Place cylinder over CLEAT and tighten (2) SET SCREWS.

INSTALLATION OF WALL CYLINDER TO POST OR OTHER VERTICAL SURFACE MOUNTING (Fig. 2, 3 & 4)

STEP 1: CLEAT can also be mounted directly to any flat surface such as MULLION. In this case, use of CANOPY is optional. Bring supply leads through CLEAT and install CLEAT to wall. For wet locations, in accordance with Underwriters Laboratories requirements, a line of caulking compound such as acrylic or silicone must be placed around the perimeter of EXTRUDED ARM to seal water away from the wireway and back openings.

STEP 2: Proceed with Step 4 and 5 above.

INSTALLATION OF REFLECTOR TRIM TO CYLINDER (Fig. 4)

Follow installation instructions in Reflector Trim Instruction Sheet IS:C4T4V.

CAUTION:

- DO NOT ENERGIZE THE LAMP UNTIL REFLECTOR TRIM IS COMPLETELY INSTALLED.
- INSTALL ONLY T-6 TUBULAR SINGLE-ENDED CREAMIC ARC TUBE METAL HALIDE LAMP.

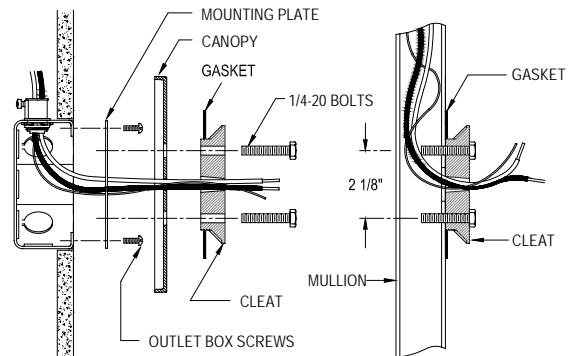
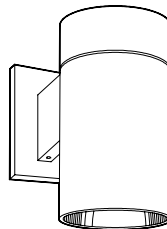


FIG. 1

FIG. 2

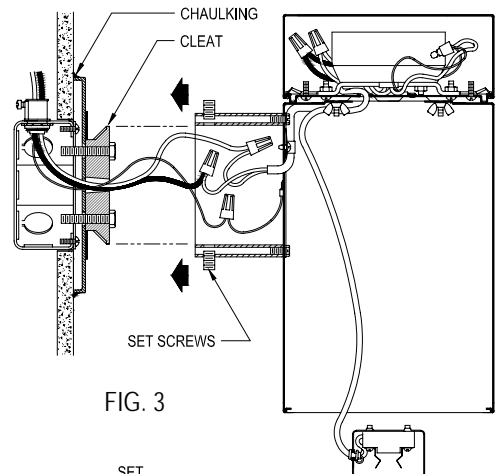


FIG. 3

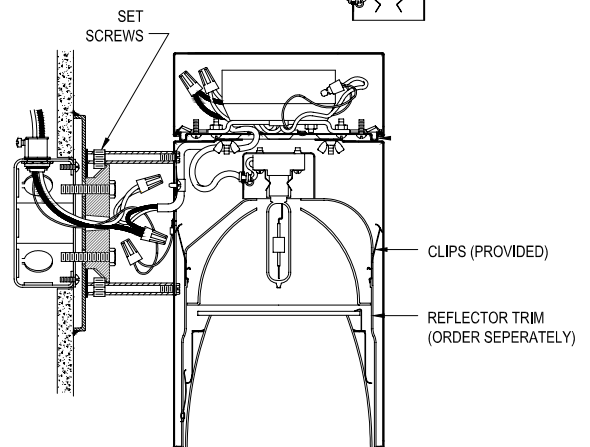


FIG. 4

LIGHTOLIER®

LIGHTOLIER A GENLYTE THOMAS COMPANY
631 Airport Road, Fall River, MA 02720

READ AND UNDERSTAND THESE INSTRUCTIONS BEFORE INSTALLING FIXTURE

This fixture is intended for installation in accordance with the National Electrical Code and local regulations. To assure full compliance with local codes and regulations, check with your local electrical inspector before installation. To prevent electric shock, turn off electricity at fuse box before proceeding.

Retain these instructions for maintenance reference.

INSTRUCTION SHEET NO.

IS:C6CW

A0604

Page 2 of 2

INSTALLATION PROCEDURE FOR: C6CW SERIES 6" DIA. H.I.D. WALL MOUNT CYLINDER USED WITH C6T6V SERIES FLANGLESS REFLECTOR TRIM (ORDER SEPARATELY)

WARNING: USE ONLY REFLECTOR TRIMS PROVIDED BY LIGHTOLIER. USE OF OTHER MANUFACTURERS' REFLECTOR TRIMS MAY VOID THE UNDERWRITERS LABORATORIES LISTING AND COULD CONSTITUTE A FIRE HAZARD.

TO REPLACE BALLAST (Fig. 5 & 6)

Before changing the ballast, switch off the main power supply to the fixture.

STEP 1: Remove APERTURE CONE ASSEMBLY from REFLECTOR HOUSING by grasping inside of cone and pulling down.

STEP 2: Remove lamp.

STEP 3: Pull REFLECTOR HOUSING down until CLIPS stop at the bottom lip of LOWER HOUSING. Press CLIPS inward to remove REFLECTOR HOUSING.

STEP 4: Detach LAMPHOLDER from REFLECTOR HOUSING by squeezing LAMPHOLDER SPRING.

STEP 5: Remove WING NUTS, then separate UPPER HOUSING from top of Lower HOUSING to access BALLAST/PLATE ASSEMBLY.

STEP 6: Turn SCREW counterclockwise to loosen SUPPORT BRACKET. Repeat with other (2) screws. Carefully remove BALLAST/PLATE ASSEMBLY from UPPER HOUSING.

STEP 7: Detach BALLAST SUPPORT BRACKET by removing (2) BALLAST SUPPORT BRACKET SCREWS.

STEP 8: Replace BALLAST. Reattach BALLAST/BALLAST SUPPORT BRACKET, BALLAST/PLATE ASSEMBLY to UPPER HOUSING.

STEP 9: Align STUDS with holes in LOWER HOUSING, then tighten firmly with WING NUTS.

STEP 10: Reverse installations from Step 4 to Step 1. For additional instructions if needed, see Reflector Trim Instruction Sheet IS:C4T4V.

TO REPLACE LAMP (Fig. 5 & 6)

Before replace the lamp, switch off the main power supply to the fixture.

STEP 1: Remove APERTURE CONE ASSEMBLY from REFLECTOR HOUSING by grasping inside of cone and pulling down.

STEP 2: Replace lamp. Follow lamp manufacturer's directions for proper care and handling of lamp.

STEP 3: Replace cone into reflector housing.

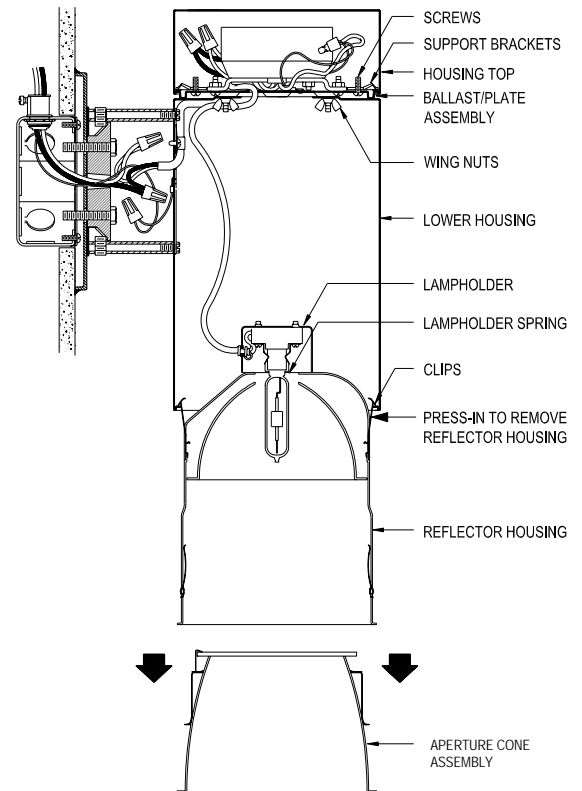


FIG. 5

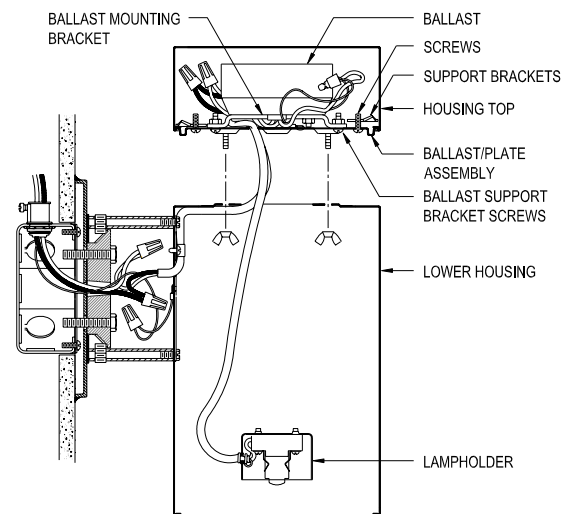


FIG. 6

LIGHTOLIER®

LIGHTOLIER A GENLYTE THOMAS COMPANY
631 Airport Road, Fall River, MA 02720