

READ AND UNDERSTAND THESE INSTRUCTIONS BEFORE INSTALLING FIXTURE

This fixture is intended for installation in accordance with the National Electrical Code and local regulations. To assure full compliance with local codes and regulations, check with your local electrical inspector before installation. To prevent electrical shock, turn off electricity at fuse box before proceeding.

Retain these instructions for maintenance reference.

INSTRUCTION SHEET NO.

IS:83ED17

C0104

Page 1 of 2

INSTRUCTIONS FOR ATTACHING 83ED17R SERIES REFLECTORS TO POWERARC MODULAR ED17 LYTESPOT (ROUND OR SQUARE FRONT)™

INSTRUCTIONS FOR ATTACHING 83ED17R SERIES REFLECTORS TO A PowerArc ED17 SPOT:

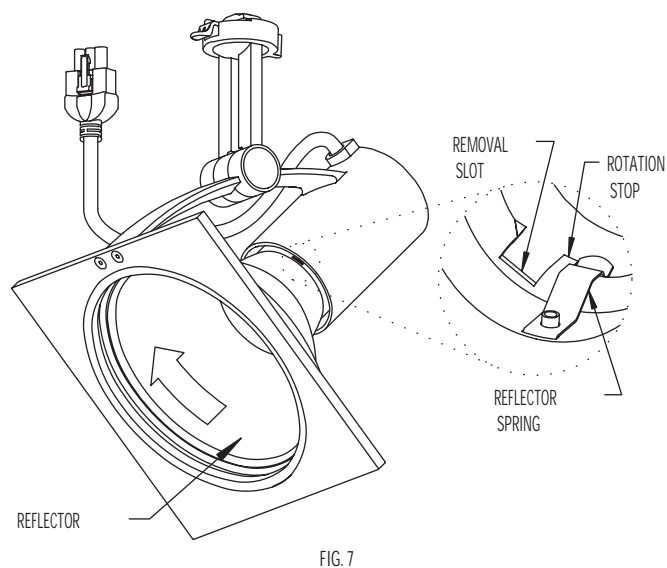
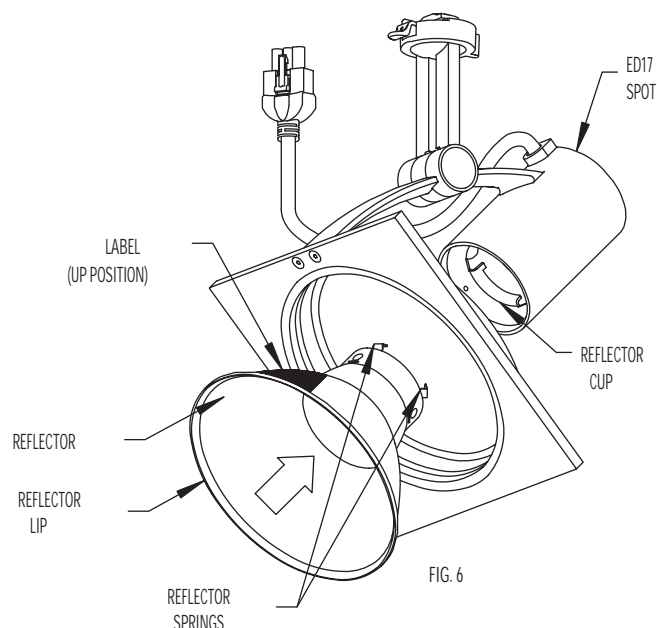
(See chart below for compatible luminaires)

COMPATIBLE LUMINAIRES		
Cat. No.	Product Group	Description
8307	Lytespan Track	ED17 Open/Square Lytespot for Protected Lamp
8317		ED17 Enclosed/Round Lytespot for Protected Lamp
8307U		ED17 Open/Square Lytespot for Unprotected Lamp
8317U		ED17 Enclosed/Round Lytespot for Unprotected Lamp

NOTE: Reflectors must be installed prior to lamps. After reflector is installed, see IS:83S for installation, lamping, and operating instructions.

1. Orienting LABEL in the UP position, hold REFLECTOR by the LIP and push into REFLECTOR CUP until REFLECTOR SPRINGS engage. (See FIG. 6 and 7).
2. Rotate REFLECTOR clockwise until the REFLECTOR SPRINGS hit the ROTATION STOPS on the REFLECTOR CUP. (See FIG. 7)

To remove REFLECTOR: Remove lamp, rotate REFLECTOR counterclockwise until REFLECTOR SPRINGS snap into REMOVAL SLOTS. Pull REFLECTOR out of REFLECTOR CUP. (See Fig. 7)



READ AND UNDERSTAND THESE INSTRUCTIONS BEFORE INSTALLING LUMINAIRE.

This luminaire is intended for installation in accordance with the National Electrical Code and local regulations. To assure full compliance with local codes and regulations, check with your local electrical inspector before installation. To prevent electrical shock, turn off electricity at fuse box before proceeding.

Retain these instructions for maintenance reference.

INSTRUCTION SHEET NO.

IS:83ED17

C0104

Page 2 of 2

INSTRUCTIONS FOR ATTACHING 83ED17R SERIES REFLECTORS TO ED17 HID LYTESPOTS SERIES LUMINAIRES.

INSTRUCTIONS FOR ATTACHING 83ED17R SERIES REFLECTORS TO AN HID ED17 LYTESPOT LUMINAIRE:

(See chart below for compatible luminaires)

COMPATIBLE LUMINAIRES		
Cat. No.	Product Group	Description
8387	Lytespan Track	ED17 50W Magnetic HID Lytespot
8387E		ED17 50W Electronic HID Lytespot
8388		ED17 70W Magnetic HID Lytespot
8388E		ED17 70W Electronic HID Lytespot
8389E		ED17 100W Electronic HID Lytespot
PDE17 Series	Calculite	ED17 HID Pull-Down
SRE17 Series		ED17 HID Semi-Recessed

NOTE: Reflectors must be installed prior to lamps. After reflector is assembled, see IS:8387 for Lytespot installation, lamping, accessory, and operating instructions.

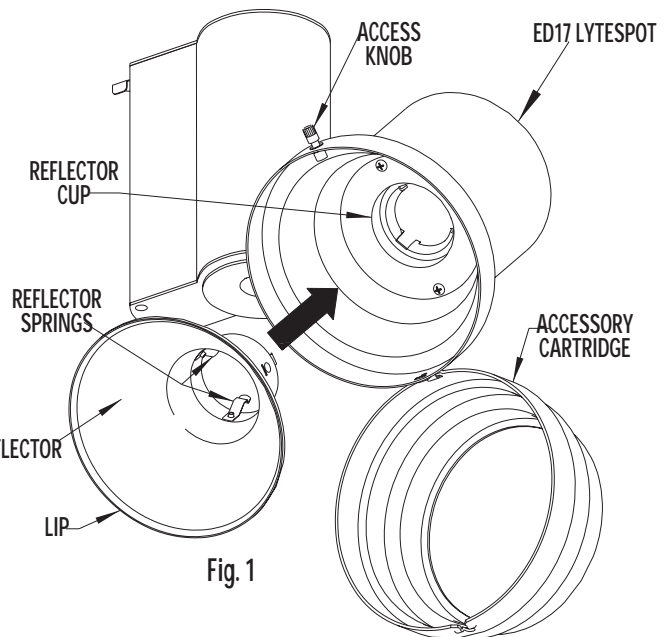


Fig. 1

1. If Lytespot is already attached onto a track, make sure power to the track is turned off before proceeding. (Lytespan Track luminaire is shown in Figs. 1 & 2. Instructions 2-4 are the same when using Calculite luminaire.
2. Holding ACCESSORY CARTRIDGE, loosen ACCESS KNOB a few turns until ACCESSORY CARTRIDGE opens. SWING the CARTRIDGE open for access to REFLECTOR CUP (See Fig. 1).
3. Holding REFLECTOR by the LIP, push REFLECTOR into REFLECTOR CUP until REFLECTOR SPRINGS engage (See Fig. 2)
4. Rotate REFLECTOR clockwise until the REFLECTOR SPRINGS hit the ROTATION STOPS on the REFLECTOR CUP (See fig. 2).

To remove REFLECTOR, remove lamp, rotate REFLECTOR counter-clockwise until REFLECTOR SPRINGS snap off into REMOVAL SLOTS. Pull REFLECTOR out of REFLECTOR CUP (See fig. 2).

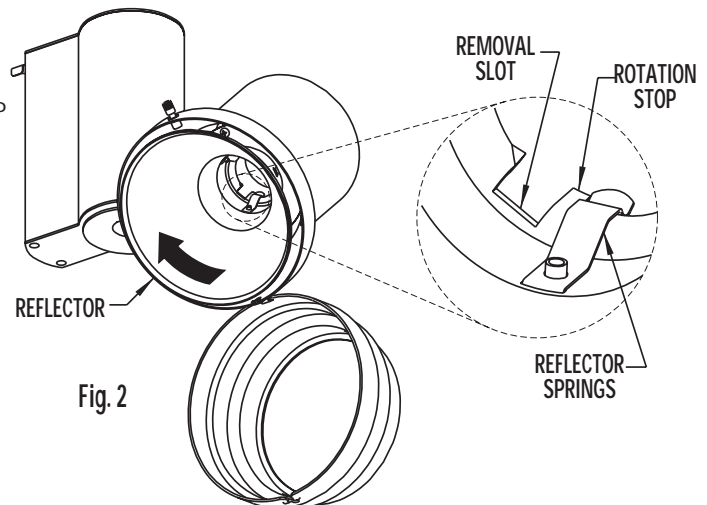


Fig. 2