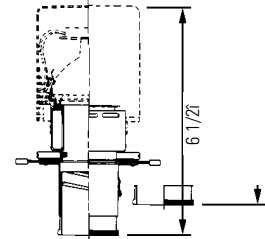


**FRAMING PROJECTOR
ACCESSORY
(ORDER SEPARATELY)**



Ordering Information

Catalog No.	Finishes	Mounting	Lamps
8171WH	Matte White	All Lytespan Track Systems	20W-75W
8171BK	Matte Black		MR-16 12V

6497 Matte Black Framing Projector (For performance data see Lightolier Specification Sheet 6497)

Features

- Lytespan Attachment Fitting/Magnetic Transformer Housing:** Die-cast aluminum. Fitter twists onto track and locks on.
- Housing:** .040" aluminum.
- Step Baffle:** Die-cast aluminum with stepped conical surface for low brightness. Matte black finish.
- Trunion Mounting:** Tensioned with internal spring washer and vibration-resistant nut. Provides 90° vertical adjustment each way.
- Pivot Mounting:** Tensioned; 350° stop.
- Movable Brass Contact:** Extends for connection to 2nd circuit in Advent Lytespan Track.
- Polarity Key**
- Push Tab:** Molded polycarbonate. Detaches unit.
- Yoke:** .187" extruded aluminum.
- Lamp Guard:** 2" O.D. tempered glass.

Electrical/Dimming

Low voltage magnetic transformer designed to fit a compact die-cast housing scaled to complement the track. Two-pin base socket, pre-wired with sleeved No. 18 braided SF-1 leads. For dimming control, use only dimmers specially rated for inductive loads (low voltage fixtures equipped with magnetic transformers) such as Lightolier Lytemode and Scenist systems and Lightolier dimmers carrying the suffix VA.

Options & Accessory

2" Series Color Filters and Spread Lens. Louver No. 7422.

Finish

All painted finishes baked enamel.

Labels

UL; I.B.E.W.

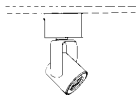
Patents

U.S. Patent No. 3,496,518. Foreign patents granted.

Job Information	Type:
Job Name:	
Cat. No.:	
Lamp(s):	
Notes:	

Lightolier a Genlyte Thomas Company www.lightolier.com
 631 Airport Road, Fall River, MA 02720 • (508) 679-8131 • Fax (508) 674-4710
 We reserve the right to change details of design, materials and finish.
 © 2002 Genlyte Thomas Group LLC (Lightolier Division) • A0902

LIGHTOLIER®

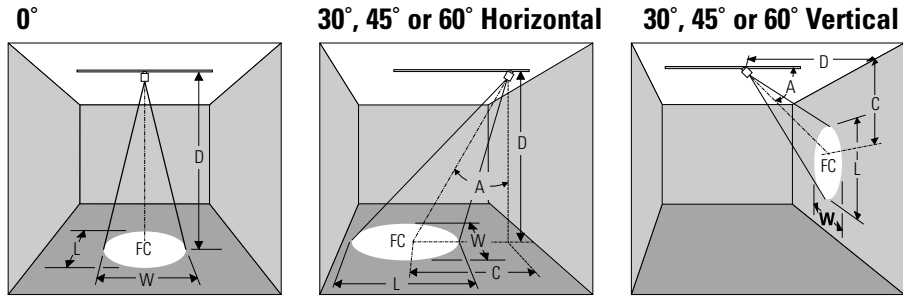


Lighting Data

Aiming Angle

- L** Beam Length
- W** Beam Width
- C** Distance to center beam
- D** Distance
- A** Aiming Angle
- FC** Footcandles

L and **W** are the outer points where the candle power drops to 50% of the maximum. **FC** are the initial footcandles at the center of the beam.



LAMP	Beam Spread 50% Max. CP	Beam Center C.P. Candelas	Rated Life-Hrs	0° AIMING ANGLE					A=30° AIMING ANGLE					A=45° AIMING ANGLE					A=60° AIMING ANGLE				
				D	FC	L	W	D	C	FC	L	W	D	C	FC	L	W	D	C	FC	L	W	
20W MR16 VNSP (T-H) (EZX) 7°	8,200	3,000	7'	167	0.9'	0.9'	6'	3.5'	148	1.0'	0.8'	4'	4.0'	181	1.0'	0.7'	2'	3.5'	256	1.0'	0.5'		
			10'	62	1.2'	1.2'	8'	5.2'	66	1.5'	1.3'	6'	6.0'	61	1.5'	1.0'	3'	5.2'	114	1.5'	0.7'		
			13'	49	1.6'	1.6'	12'	6.9'	37	2.0'	1.7'	8'	8.0'	45	2.0'	1.4'	4'	6.9'	64	2.0'	1.0'		
			16'	32	2.0'	2.0'	15'	8.7'	24	2.4'	2.1'	10'	10.0'	29	2.5'	1.7'	5'	8.7'	41	2.5'	1.2'		
20W MR16 NSP (T-H) (ESX) 13°	3,600	3,000	6'	100	1.4'	1.4'	5'	2.9'	84	1.5'	1.3'	3'	3.0'	141	1.4'	1.0'	2'	3.5'	113	1.9'	0.9'		
			8'	56	1.8'	1.8'	7'	4.0'	48	2.1'	1.8'	5'	5.0'	51	2.3'	1.6'	3'	5.2'	50	2.8'	1.4'		
			10'	36	2.3'	2.3'	9'	5.2'	29	2.7'	2.4'	7'	7.0'	26	3.2'	2.3'	4'	6.9'	28	3.8'	1.8'		
			12'	25	2.7'	2.7'	11'	6.4'	19	3.4'	2.9'	9'	9.0'	16	4.2'	2.9'	5'	8.7'	18	4.7'	2.3'		
20W MR16 FL (T-H) (BAB) 40°	525	4,000	2'	131	1.5'	1.5'	2'	1.2'	85	2.0'	1.7'	2'	2.0'	46	3.4'	2.1'	1'	1.7'	66	4.8'	1.5'		
			3'	58	2.2'	2.2'	3'	1.7'	38	3.0'	2.5'	3'	3.0'	21	5.0'	3.1'	2'	3.5'	16	9.7'	2.9'		
			4'	33	2.9'	2.9'	4'	2.3'	21	4.1'	3.4'	4'	4.0'	12	6.7'	4.1'	3'	5.2'	7	14.5'	4.4'		
			5'	21	3.6'	3.6'	5'	2.9'	14	5.1'	4.2'	5'	5.0'	7	8.4'	5.1'	4'	6.8'	4	19.3'	5.8'		
35W MR16 NSP (T-H) (FRB) 12°	6,700	4,000	7'	178	1.5'	1.5'	6'	3.5'	157	1.7'	1.5'	4'	4.0'	192	1.7'	1.2'	2'	3.5'	272	1.7'	0.8'		
			10'	87	2.1'	2.1'	9'	5.2'	70	2.5'	2.2'	6'	6.0'	65	2.6'	1.8'	3'	5.2'	121	2.6'	1.3'		
			13'	51	2.7'	2.7'	12'	6.9'	39	3.4'	2.9'	8'	8.0'	48	3.4'	2.4'	4'	6.9'	68	3.5'	1.7'		
			16'	34	3.4'	3.4'	15'	8.7'	25	4.2'	3.6'	10'	10.0'	31	4.3'	3.0'	5'	8.7'	44	4.3'	2.1'		
35W MR16 SP (T-H) (FRA) 20°	3,900	4,000	6'	108	2.1'	2.1'	5'	2.9'	101	2.4'	2.0'	3'	3.0'	153	2.2'	1.5'	2'	3.5'	122	3.1'	1.4'		
			8'	61	2.8'	2.8'	7'	4.0'	52	3.3'	2.9'	5'	5.0'	55	3.6'	2.5'	3'	5.2'	54	4.7'	2.1'		
			10'	39	3.5'	3.5'	9'	5.2'	31	4.3'	3.7'	7'	7.0'	28	5.1'	3.5'	4'	6.9'	30	6.2'	2.8'		
			12'	27	4.2'	4.2'	11'	6.4'	21	5.2'	4.5'	9'	9.0'	17	6.6'	4.5'	5'	8.7'	20	7.8'	3.5'		
42W MR16 VNSP (T-H) (EZY) 9°	13,100	3,500	8'	205	1.3'	1.3'	7'	4.0'	174	1.5'	1.3'	5'	5.0'	165	1.6'	1.1'	3'	5.2	182	1.9'	0.9'		
			12'	91	1.9'	1.9'	10'	5.8'	85	2.1'	1.8'	7'	7.0'	95	2.2'	1.6'	4'	6.9'	102	2.6'	1.3'		
			16'	51	2.5'	2.5'	13'	7.5'	50	2.7'	2.4'	9'	9.0'	57	2.9'	2.0'	5'	8.7'	66	3.2'	1.6'		
			20'	33	3.1'	3.1'	16'	9.2'	33	3.4'	2.9'	11'	11.0'	38	3.5'	2.4'	6'	10.4'	45	3.8'	1.9'		
50W MR16 NFL (T-H) (EXZ) 27°	3,400	4,000	6'	94	2.8'	2.9'	5'	2.9'	88	3.3'	2.8'	3'	3.0'	134	3.1'	2.0'	2'	3.5'	106	4.6'	1.9'		
			8'	53	3.8'	3.8'	7'	4.0'	45	4.6'	3.9'	5'	5.0'	48	5.1'	3.4'	3'	5.2'	47	7.0'	2.9'		
			10'	34	4.8'	4.8'	9'	5.2'	27	5.9'	5.0'	7'	7.0'	25	7.1'	4.8'	4'	6.9'	27	9.3'	3.6'		
			12'	24	5.8'	5.8'	11'	6.4'	18	7.2'	6.1'	9'	9.0'	15	9.2'	6.1'	5'	8.7'	17	11.6'	4.6'		
50W MR16 FL (T-H) (EXN) 40°	1,650	4,000	4'	118	2.9'	2.9'	3'	1.7'	134	3.0'	2.5'	3'	3.0'	73	5.0'	3.1'	1'	1.7'	231	4.8'	1.5'		
			6'	51	4.4'	4.4'	5'	2.9'	48	5.1'	4.2'	4'	4.0'	41	6.7'	4.1'	2'	3.5'	58	9.7'	2.9'		
			8'	29	5.8'	5.8'	7'	4.0'	25	7.1'	5.9'	5'	5.0'	26	8.4'	5.1'	3'	5.2'	26	14.5'	4.4'		
			10'	19	7.3'	7.3'	9'	5.7'	15	9.1'	7.6'	6'	6.0'	18	10.1'	6.2'	4'	6.9'	14	19.3'	5.8'		
50W MR16 WFL (T-H) (FNW) 55°	1,150	4,000	3'	128	3.1'	3.1'	3'	1.7'	83	4.6'	3.6'	2'	2.0'	102	5.7'	2.9'	1'	1.7'	144	22.3'	2.1'		
			5'	46	5.2'	5.2'	5'	2.9'	30	7.6'	6.0'	3'	3.0'	45	8.6'	4.4'	2'	3.5'	36	44.5'	4.2'		
			7'	23	7.3'	7.3'	7'	4.0'	15	10.7'	8.4'	4'	4.0'	25	11.4'	5.9'	3'	5.2'	16	66.8'	6.2'		
			9'	14	8.4'	9.4'	9'	5.2'	9	13.7'	10.8'	5'	5.0'	16	14.3'	7.4'	4'	6.9'	9	69.1'	8.3'		
75W MR16 NSP (T-H) (EYF) 14°	12,000	4,000	8'	188	2.0'	2.0'	7'	4.0'	159	2.3'	2.0'	5'	5.0'	170	2.5'	1.7'	3'	5.2'	167	3.1'	1.5'		
			12'	83	2.9'	2.9'	10'	5.8'	78	3.3'	2.8'	7'	7.0'	87	3.5'	2.4'	4'	6.9'	84	4.1'	2.0'		
			16'	47	3.9'	3.9'	13'	7.5'	46	4.3'	3.7'	9'	9.0'	52	4.5'	3.1'	5'	8.7'	60	5.1'	2.5'		
			20'	30	4.9'	4.8'	16'	6.2'	30	5.3'	4.5'	11'	11.0'	35	5.5'	3.8'	6'	10.4'	47	6.2'	2.9'		
75W MR16 NFL (T-H) (EYJ) 25°	4,900	4,000	6'	136	2.7'	2.7'	5'	2.9'	127	3.0'	2.6'	3'	3.0'	192	2.8'	1.9'	2'	3.5'	153	4.2'	1.8'		
			8'	77	3.5'	3.5'	7'	4.0'	65	4.2'	3.6'	5'	5.0'	69	4.7'	3.1'	3'	5.2'	68	6.2'	2.7'		
			10'	49	4.4'	4.4'	9'	5.2'	39	5.4'	4.6'	7'	7.0'	35	6.5'	4.4'	4'	6.9'	38	6.3'	3.5'		
			12'	34	5.3'	5.3'	11'	6.4'	26	6.6'	5.6'	9'	9.0'	21	8.4'	5.6'	5'	8.7'	25	10.4'	4.4'		
75W MR16 FL (T-H) (EYC) 42°	2,100	4,000	4'	131	3.1'	3.1'	3'	1.7'	152	3.2'	2.7'	3'	3.0'	83	5.4'	3.3'	1'	1.7'	263	5.5'	1.5'		
			6'	58	4.6'	4.6'	5'	2.9'	55	5.4'	4.4'	4'	4.0'	46	7.2'	4.3'	2'	3.5'	66	11.0'	3.1'		
			8'	33	6.1'	6.1'	7'	4.0'	26	7.5'	6.2'	5'	5.0'	30	8.0'	5.4'	3'	5.2'	29	16.5'	4.6'		
			10'	21	7.7'	7.7'	9'	5.2'	17	9.7'	8.0'	6'	6.0'	21	10.8'	6.5'	4'	6.9'	10	22.0'	6.1'		

Job Information **Type:**

Lightolier a Genlyte Thomas Company www.lightolier.com
 631 Airport Road, Fall River, MA 02720 • (508) 679-8131 • Fax (508) 674-4710
 We reserve the right to change details of design, materials and finish.
 © 2002 Genlyte Thomas Group LLC (Lightolier Division) • A0902

