

**Ordering Information**

Catalog No.	Finishes	Track Mountings	Lamps
<b>8701 WH</b>	Matte White	All Lytespan Track Systems, Multipoint, Monopoint, Monopoint Pin Up, Monopoint Weighted Base, Clamp On Monopoint, Extension Wands, & Sloped Ceiling Adapter. (DOES NOT MOUNT ON PROSPEC® TRACK).	PAR16 through PAR38 250W Max. PAR30 through PAR38IR 100W Max. PAR38 Cool Beam 150W Max.
<b>8701 TM</b>	Dark Titanium		

**Features**

- 1. Arm:** Die-cast aluminum, brushed and clear coated finish.
- 2. Socket Cover:** Injection-molded thermoplastic.
- 3. Stem:** Stainless steel, brushed and clear coated finish, with a permanently tensioned horizontal rotation stop (315° rotation).
- 4. Stem Base:** Die-cast aluminum, brushed and clear coated finish with a permanently tensioned 90° vertical rotation stop (0° to 90°).
- 5. Contact Holder:** High temperature thermoplastic. Secures fixture mechanically and makes electrical contact with track.
- 6. Locking Lever:** Nickel-plated steel. For mechanical/electrical connection to track.
- 7. Track Adapter:** Die-cast aluminum, brushed and clear coated finish; attaches to track.
- 8. Moveable Brass Contact:** Extends for 2nd circuit in two circuit Lytespan track systems.
- 9. Embossed Keyway:** For attachment of optional shades.
- 10. Ground Spring:** Grounds fixture to track.
- 11. Hot Aiming Handle:** Opening in arm provided to aim fixture while it is on.

**Electrical**

Porcelain socket, medium base, nickel plated screw shell. No. 18 braided SF-1 leads.

**Input Voltage:** 120V, 60Hz

**Dimming:** Fixture may be used on a track with a dimmer. Consult the dimmer manufacturer for correct dimmer selection for line voltage Incandescent and Halogen sources

**Options and Accessories**

Accepts Metallics™ PAR20, 30, & 38 Dome Shades (8727, 8737, 8747), Metallics™ PAR20, 30, & 38 Barndoor Shades (8725, 8735, 8745), Metallics™ Par-Tech® PAR20, 30, & 38 Ring Shades (8228, 8238, 8248), & Metallics™ Par-Tech® PAR30 Bezel Shade (8237A).

**Finish**

Feature number 2 painted in White or Titanium. Other external components are brushed metal with protective clear coat.

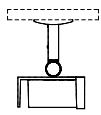
**Labels**

UL, I.B.E.W.

Job Information	Type:
<b>Job Name:</b>	
<b>Cat. No.:</b>	
<b>Lamp(s):</b>	
<b>Notes:</b>	

Lightolier a Genlyte Thomas Company www.lightolier.com  
 631 Airport Road, Fall River, MA 02720 • (508) 679-8131 • Fax (508) 674-4710  
 We reserve the right to change details of design, materials and finish.  
 © 2002 Genlyte Thomas Group LLC (Lightolier Division) • A0902

**LIGHTOLIER®**

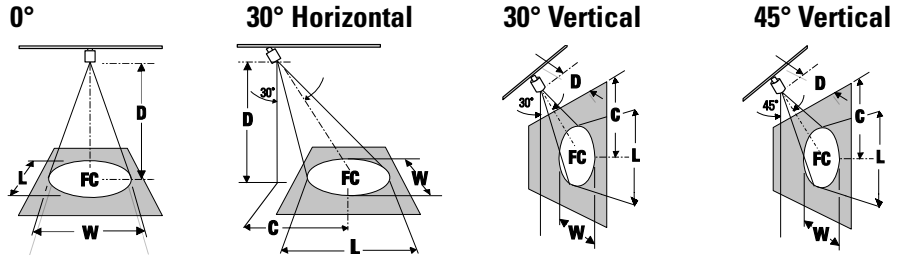


### AIMING ANGLE:

- L** Beam Length
- W** Beam Width
- C** Distance to center beam
- D** Distance
- A** Aiming Angle
- FC** Footcandle

L and W are the outer points where the candle power drops to 50% of the maximum. FC are the initial footcandles at the center of the beam.

Lamp data shown is typical. Consult lamp manufacturers for availability and performance.



### Lamp:

Lamp	Beam Spread (To 50% CBCP)	CBCP	Rated Life (Hrs.)	0°					30° Horizontal					30° Vertical					45° Vertical																															
				D	FC	L	W	D	C	FC	L	W	D	C	FC	L	W	D	C	FC	L	W																												
60W PAR16 NSP	10°	5,000	2,000	6' 139	1.0' 1.0'	8' 78	1.4' 1.4'	10' 50	1.7' 1.7'	12' 35	2.1' 2.1'	3' 1.7'	94	2.2' 1.9'	5' 2.9'	34	3.7' 3.1'	7' 4.0'	40	2.1' 1.8'	9' 5.2'	40	2.1' 1.8'	11' 6.4'	27	2.6' 2.2'	2' 3.5'	156	1.4' 0.7'	3' 5.2'	69	2.1' 1.0'	4' 6.9'	39	2.9' 1.4'	5' 8.7'	25	3.6' 1.7'	3' 3.0'	196	1.1' 0.7'	5' 5.0'	71	1.6' 1.2'	7' 7.0'	36	2.5' 1.7'	9' 9.0'	22	3.2' 2.2'
60W PAR16 NFL	30°	1,300	2,000	3' 144	1.6' 1.6'	5' 52	2.7' 2.7'	7' 27	3.8' 3.8'	9' 16	4.8' 4.8'	3' 1.7'	94	2.2' 1.9'	5' 2.9'	34	3.7' 3.1'	7' 4.0'	40	2.1' 1.8'	9' 5.2'	10	6.6' 5.6'	1' 1.7'	163	2.7' 1.1'	2' 3.5'	41	5.5' 2.1'	3' 5.2'	18	8.2' 3.2'	4' 6.9'	10	10.9' 4.3'	2' 2.0'	115	2.3' 1.5'	3' 3.0'	51	3.5' 2.3'	4' 4.0'	29	4.6' 3.0'	5' 5.0'	18	5.8' 3.8'			
50W PAR20 NSP	8°	6,000	2,000	6' 167	0.8' 0.8'	8' 94	1.1' 1.1'	10' 60	1.4' 1.4'	12' 42	1.7' 1.7'	5' 2.9'	156	0.9' 0.8'	7' 4.0'	80	1.3' 1.1'	9' 5.2'	48	1.7' 1.5'	11' 6.4'	32	2.1' 1.8'	2' 3.5'	188	1.1' 0.6'	3' 5.2'	83	1.7' 0.8'	4' 6.9'	47	2.3' 1.1'	5' 8.7'	30	2.8' 1.4'	3' 3.0'	236	0.8' 0.6'	5' 5.0'	85	1.4' 1.0'	7' 7.0'	43	2.0' 1.4'	9' 9.0'	26	2.5' 1.8'			
50W PAR20 SP	15°	3,200	2,000	6' 89	1.6' 1.6'	8' 50	2.1' 2.1'	10' 32	2.6' 2.6'	12' 22	3.2' 3.2'	5' 2.9'	83	1.8' 1.5'	7' 4.0'	42	2.5' 2.1'	9' 5.2'	26	3.2' 2.7'	11' 6.4'	17	3.9' 3.3'	2' 3.5'	100	2.2' 1.1'	3' 5.2'	44	3.3' 1.6'	4' 6.9'	25	4.4' 2.1'	5' 8.7'	16	5.6' 2.6'	3' 3.0'	126	1.6' 1.1'	5' 5.0'	45	2.7' 1.9'	7' 7.0'	23	3.8' 2.6'	9' 9.0'	14	4.8' 3.4'			
50W PAR20 NFL	27°	1,850	2,000	4' 116	1.9' 1.9'	6' 51	2.9' 2.9'	8' 29	3.8' 3.8'	10' 19	4.8' 4.8'	3' 1.7'	134	2.0' 1.7'	5' 2.9'	48	3.3' 2.8'	7' 4.0'	25	4.6' 3.9'	9' 5.2'	15	5.9' 5.0'	1' 1.7'	231	2.3' 1.0'	2' 3.5'	58	4.6' 1.9'	3' 5.2'	26	7.0' 2.9'	4' 6.9'	14	9.3' 3.8'	3' 3.0'	73	3.1' 2.0'	4' 4.0'	41	4.1' 2.7'	5' 5.0'	26	5.1' 3.4'	6' 6.0'	18	6.1' 4.1'			
75W PAR30 NSP	9°	14,000	2,500	8' 219	1.3' 1.3'	12' 97	1.9' 1.9'	16' 55	2.5' 2.5'	20' 35	3.1' 3.1'	7' 4.0'	186	1.5' 1.3'	10' 5.8'	91	2.1' 1.8'	13' 7.5'	54	2.7' 2.4'	16' 9.2'	36	3.4' 2.9'	3' 5.2'	194	1.9' 0.9'	4' 6.9'	109	2.6' 1.3'	5' 8.7'	70	3.2' 1.6'	6' 10.4'	49	3.6' 1.9'	5' 5.0'	196	1.6' 1.1'	7' 7.0'	101	2.2' 1.6'	9' 9.0'	61	2.9' 2.0'	11' 11.0'	41	3.5' 2.4'			
75W PAR30 NFL	30°	3,200	2,500	6' 89	3.2' 3.2'	8' 50	4.3' 4.3'	10' 32	5.4' 5.4'	12' 22	6.4' 6.4'	5' 2.9'	83	3.7' 3.1'	7' 4.0'	42	5.1' 4.3'	9' 5.2'	26	6.6' 5.6'	11' 6.4'	17	8.1' 6.8'	2' 3.5'	100	5.5' 2.1'	3' 5.2'	44	8.2' 3.2'	4' 6.9'	25	10.9' 4.3'	5' 8.7'	16	13.7' 5.4'	3' 3.0'	126	3.5' 2.3'	5' 5.0'	45	5.8' 3.8'	7' 7.0'	23	8.1' 5.3'	9' 9.0'	14	10.4' 6.6'			
75W PAR30 FL	40°	2,000	2,500	4' 125	2.9' 2.9'	6' 56	4.4' 4.4'	8' 31	5.8' 5.8'	10' 20	7.3' 7.3'	3' 1.7'	144	3.0' 2.5'	5' 2.9'	52	5.1' 4.2'	7' 4.0'	27	7.1' 5.9'	9' 5.2'	16	9.1' 7.6'	2' 3.5'	250	4.8' 1.5'	3' 5.2'	63	9.7' 2.9'	4' 6.9'	28	14.5' 4.4'	5' 8.7'	16	19.3' 5.8'	3' 3.0'	79	5.0' 3.1'	4' 4.0'	44	6.7' 4.1'	5' 5.0'	28	8.4' 5.1'	6' 6.0'	20	10.1' 6.2'			
90W PAR38 NSP	9°	19,500	2,500	10' 195	1.6' 1.6'	15' 87	2.4' 2.4'	20' 49	2.4' 2.4'	25' 31	3.9' 3.9'	8' 4.6'	198	1.7' 1.5'	12' 6.9'	88	2.5' 2.2'	16' 9.2'	49	3.4' 2.9'	20' 11.5'	32	4.2' 3.6'	4' 6.9'	152	2.6' 1.3'	6' 10.4'	60	3.8' 1.9'	8' 13.9'	38	5.1' 2.5'	10' 17.3'	24	6.4' 3.1'	6' 6.0'	192	1.9' 1.3'	9' 9.0'	85	2.9' 2.0'	12' 12.0'	48	3.8' 2.7'	15' 15.0'	31	4.8' 3.3'			
90W PAR38 SP	12°	14,500	2,500	8' 227	1.7' 1.7'	12' 101	2.5' 2.5'	16' 57	3.4' 3.4'	20' 36	4.2' 4.2'	7' 4.0'	192	2.0' 1.7'	10' 5.8'	94	2.8' 2.4'	13' 7.5'	56	3.7' 3.2'	16' 9.2'	37	4.5' 3.9'	3' 5.2'	201	2.6' 1.3'	4' 6.9'	113	3.5' 1.7'	5' 8.7'	73	4.3' 2.1'	6' 10.4'	50	5.2' 2.5'	5' 5.0'	205	2.1' 1.5'	7' 7.0'	105	3.0' 2.1'	9' 9.0'	63	3.8' 2.7'	11' 11.0'	42	4.7' 3.3'			
90W PAR38 NFL	28°	4,500	2,500	6' 125	3.0' 3.0'	8' 70	4.0' 4.0'	10' 45	5.0' 5.0'	12' 31	6.0' 6.0'	5' 2.9'	117	3.4' 2.9'	7' 4.0'	60	4.8' 4.0'	9' 5.2'	36	6.1' 5.2'	11' 6.4'	24	7.5' 6.3'	2' 3.5'	141	4.9' 2.0'	3' 5.2'	63	7.4' 3.0'	4' 6.9'	35	9.8' 4.0'	5' 6.7'	23	12.3' 5.0'	3' 3.0'	177	3.2' 2.1'	5' 5.0'	64	5.3' 3.5'	7' 7.0'	32	7.4' 4.9'	9' 9.0'	20	9.6' 6.3'			
90W PAR38 WFL	60°	1,300	2,500	3' 144	3.5' 3.5'	5' 52	5.6' 5.6'	7' 27	8.1' 8.1'	9' 16	10.4' 10.4'	3' 1.7'	94	5.2' 4.0'	5' 2.9'	34	6.7' 6.7'	7' 4.0'	17	12.1' 9.3'	9' 5.2'	10	15.6' 12.0'	1' 1.7'	163	* 2.3'	2' 3.5'	41	* 4.6'	3' 5.2'	16	* 6.9'	4' 6.9'	10	* 9.2'	2' 2.0'	115	6.9' 3.3'	3' 3.0'	51	10.4' 4.9'	4' 4.0'	29	13.9' 6.5'	5' 5.0'	18	17.3' 8.2'			
120W PAR38 NSP	10°	25,000	3,000	10' 250	1.7' 1.7'	15' 111	2.6' 2.6'	20' 63	3.5' 3.5'	25' 40	4.4' 4.4'	8' 4.6'	254	1.9' 1.6'	12' 6.9'	113	2.8' 2.4'	16' 9.2'	63	3.7' 3.2'	20' 11.5'	41	4.7' 4.0'	4' 6.9'	195	2.9' 1.4'	6' 10.4'	87	4.3' 2.1'	8' 13.9'	49	5.7' 2.8'	10' 17.3'	31	7.2' 3.5'	6' 6.0'	246	2.1' 1.5'	9' 9.0'	109	3.2' 2.2'	12' 12.0'	61	4.2' 3.0'	15' 15.0'	39	5.3' 3.7'			
120W PAR38 FL	30°	5,000	3,000	6' 139	3.2' 3.2'	8' 78	4.3' 4.3'	10' 50	5.4' 5.4'	12' 35	6.4' 6.4'	5' 2.9'	130	3.7' 3.1'	7' 4.0'	66	5.1' 4.3'	9' 5.2'	40	6.6' 5.6'	11' 6.4'	27	8.1' 6.8'	2' 3.5'	156	5.5' 2.1'	3' 5.2'	69	6.2' 3.2'	4' 6.9'	39	10.9' 4.3'	5' 8.7'	25	13.7' 5.4'	3' 3.0'	196	3.5' 2.3'	5' 5.0'	36	8.1' 5.3'	6' 6.0'	22	10.4' 6.8'						
120W PAR38 WFL	50°	2,000	3,000	4' 125	3.7' 3.7'	6' 56	5.6' 5.6'	8' 31	7.5' 7.5'	10' 20	9.3' 9.3'	3' 1.7'	144	4.0' 3.2'	5' 2.9'	52	6.7' 5.4'	7' 4.0'	27	9.4' 7.5'	9' 5.2'	16	12.1' 9.7'	1' 1.7'	250	10.7' 1.9'	2' 3.5'	63	21.5' 3.7'	3' 5.2'	28	32.2' 5.6'	4' 6.9'	16	42.9' 7.5'	3' 3.0'	79	7.2' 4.0'	4' 4.0'	44	9.5' 5.3'	5' 5.0'	28	11.9' 6.6'	6' 6.0'	20	14.3' 7.9'			
250W PAR38 SP	11°	40,000	4,200	15' 178	2.9' 2.9'	20' 100	3.9' 3.9'	25' 64	4.8' 4.8'	30' 44	5.8' 5.8'	10' 5.6'	260	2.6' 2.2'	15' 8.7'	115	3.9' 3.3'	20' 11.5'	65	5.2' 4.4'	25' 14.4'	42	6.4' 5.6'	5' 8.7'	200	4.0' 1.9'	8' 13.9'	78	6.3' 3.1'	11' 19.1'	41	8.7' 4.2'	14' 25.2'	26	11.1' 5.4'	8' 8.0'	221	3.1' 2.2'	12' 12.0'	96	4.7' 3.3'	16' 16.0'	55	6.2' 4.4'	20' 20.0'	35	7.8' 5.4'			
250W PAR38 FL	32°	8,000	4,200	7' 163	4.0' 4.0'	10' 80	5.7' 5.7'	13' 47	7.5' 7.5'	16' 31	9.2' 9.2'	6' 3.5'	144	4.7' 4.0'	9' 5.2'	64	7.1' 6.0'	12' 6.9'	36	9.4' 7.9'	15' 8.7'	23	11.8' 9.9'	2' 3.5'	250	6.1' 2.3'	3' 5.2'	111	9.1' 3.4'	4' 6.9'	63	12.2' 4.6'	5' 8.7'	40	15.2' 5.7'	4' 4.0'	177	5.0' 3.2'	6' 6.0'	79	7.5' 4.9'	8' 8.0'	44	10.0' 5.5'	10' 10.0'	28	12.5' 9.1'			

### Job Information Type:

Lightolier a Genlyte Thomas Company www.lightolier.com  
 631 Airport Road, Fall River, MA 02720 • (508) 679-8131 • Fax (508) 674-4710  
 We reserve the right to change details of design, materials and finish.  
 © 2002 Genlyte Thomas Group LLC (Lightolier Division) • A0902

