

### Ordering Information

Catalog No.	Finishes	Mounting	Lamps
8172WH	Matte White	All Lytespan Track Systems	35W or 37W Max IR
8172BK	Matte Black		MR-16 12V
6497	Matte Black Framing Projector (For performance data see Lightolier Specification Sheet 6497)		

### Features

- Transformer Housing:** Die-cast aluminum. Fitting twists onto track and locks on.
- Housing:** .040" aluminum.
- Step Baffle:** Die-cast aluminum with stepped conical surface for low brightness. Matte black finish.
- Trunion Mounting:** Tensioned, provides 90° vertical adjustment.
- Pivot Mounting:** Tensioned; 90° horizontal stop to each side.
- Movable Brass Contact:** Extends for connection to 2nd circuit in Advent Lytespan Track.
- Polarity Keyway**
- Push Tab:** Molded polycarbonate. Detaches unit.
- Lamp Guard:** 2" O.D. tempered glass.
- 10. Framing Projector Accessory**

### Electrical/Dimming

Low voltage magnetic transformer designed to fit a compact die-cast housing scaled to complement the track. Two-pin base socket, pre-wired with sleeved No. 18 braided SF-1 leads. For dimming control, use only dimmers specially rated for inductive loads (low voltage fixtures equipped with magnetic transformers) such as Lightolier Lytemode and Scenist systems and Lightolier dimmers carrying the suffix VA.

### Options & Accessories

2" Series Color Filters, Louver, Spread Lens

### Finish

All painted finishes baked enamel.

### Labels

UL; I.B.E.W.

### Patents

U.S. Patent No. 3,496,518. Foreign patents granted.

### Job Information

### Type:

**Job Name:**

**Cat. No.:**

**Lamp(s):**

**Notes:**

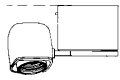
Lightolier a Genlyte company

www.lightolier.com

631 Airport Road, Fall River, MA 02720 • (508) 679-8131 • Fax (508) 674-4710

We reserve the right to change details of design, materials and finish.

© 2006 Genlyte Group LLC • D1106

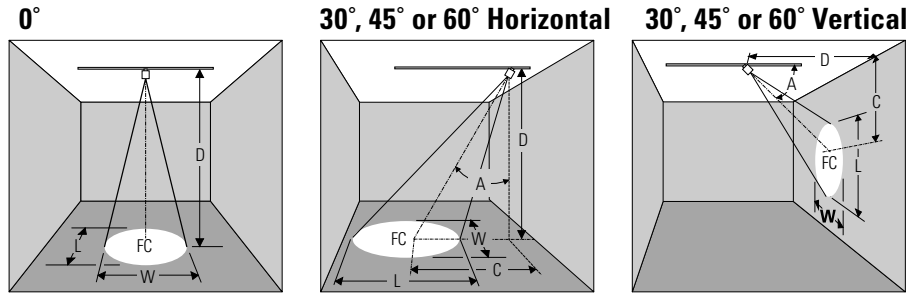


## Lighting Data

### Aiming Angle

- L** Beam Length
- W** Beam Width
- C** Distance to center beam
- D** Distance
- A** Aiming Angle
- FC** Footcandles

L and W are the outer points where the candle power drops to 50% of the maximum. FC are the initial footcandles at the center of the beam.



LAMP	Beam Spread 50% Max. CP	Beam Center C.P. Candelas	Rated Life-Hrs	0° AIMING ANGLE				A=30° AIMING ANGLE					A=45° AIMING ANGLE					A=60° AIMING ANGLE				
				D	FC	L	W	D	C	FC	L	W	D	C	FC	L	W	D	C	FC	L	W
20W MR16 VNSP 		7,400	3,000	7'	151	0.9'	0.9'	6'	3.5'	134	1.0'	0.8'	4'	4.0'	164	1.0'	0.7'	2'	3.5'	231	1.0'	0.5'
				10'	74	1.2'	1.2'	9'	5.2'	59	1.5'	1.3'	6'	6.0'	73	1.5'	1.0'	3'	5.2'	103	1.5'	0.7'
				13'	44	1.6'	1.6'	12'	6.9'	33	2.0'	1.7'	8'	8.0'	41	2.0'	1.4'	4'	6.9'	58	2.0'	1.0'
				16'	29	2.0'	2.0'	15'	9.7'	21	2.4'	2.1'	10'	10.0'	26	2.5'	1.7'	5'	8.7'	37	2.5'	1.2'
20W MR16 NSP 		3,750	5,000	6'	104	1.6'	1.6'	5'	2.9'	97	1.8'	1.5'	3'	3.0'	147	1.6'	1.1'	2'	3.5'	117	2.2'	1.1'
				8'	59	2.1'	2.1'	7'	4.0'	50	2.5'	2.1'	5'	5.0'	53	2.7'	1.9'	3'	5.2'	52	3.3'	1.6'
				10'	38	2.6'	2.6'	9'	5.2'	30	3.2'	2.7'	7'	7.0'	27	3.8'	2.6'	4'	6.9'	29	4.4'	2.1'
				12'	26	3.2'	3.2'	11'	6.4'	20	3.9'	3.3'	9'	9.0'	16	4.8'	3.4'	5'	8.7'	19	5.6'	2.6'
20W MR16 FL 		525	5,000	2'	131	1.5'	1.5'	2'	1.2'	85	2.0'	1.7'	2'	2.0'	46	3.4'	2.1'	1'	1.7'	66	4.8'	1.5'
				3'	58	2.2'	2.2'	3'	1.7'	38	3.0'	2.5'	3'	3.0'	21	5.0'	3.1'	2'	3.5'	16	9.7'	2.9'
				4'	33	2.8'	2.8'	4'	2.3'	21	4.1'	3.4'	4'	4.0'	12	6.7'	4.1'	3'	5.2'	7	14.5'	4.4'
				5'	21	3.6'	3.6'	5'	2.9'	14	5.1'	4.2'	5'	5.0'	7	8.4'	5.1'	4'	6.9'	4	19.3'	5.8'
35W MR16 NSP 		11,000	4,000	7'	224	1.0'	1.0'	6'	3.5'	198	1.1'	1.0'	4'	4.0'	243	1.1'	0.8'	2'	3.5'	344	1.1'	0.6'
				10'	110	1.4'	1.4'	9'	5.2'	88	1.7'	1.5'	6'	6.0'	108	1.7'	1.2'	3'	5.2'	153	1.7'	0.8'
				13'	65	1.8'	1.8'	12'	6.9'	50	2.2'	1.9'	8'	8.0'	61	2.2'	1.6'	4'	6.9'	86	2.3'	1.1'
				16'	43	2.2'	2.2'	15'	8.7'	32	2.8'	2.4'	10'	10.0'	48	2.5'	1.8'	5'	8.7'	55	2.8'	1.4'
35W MR16 SP 		2,800	4,000	6'	78	2.1'	2.1'	5'	2.9'	73	2.4'	2.0'	3'	3.0'	110	2.2'	1.5'	2'	3.5'	88	3.1'	1.4'
				8'	44	2.8'	2.8'	7'	4.0'	37	3.3'	2.9'	5'	5.0'	40	3.6'	2.5'	3'	5.2'	39	4.7'	2.1'
				10'	28	3.5'	2.3'	9'	5.2'	22	4.3'	3.7'	7'	7.0'	20	5.1'	3.5'	4'	6.9'	22	6.2'	2.8'
				12'	19	4.2'	4.2'	11'	6.4'	15	5.2'	4.5'	9'	9.0'	12	6.6'	4.5'	5'	8.7'	14	7.8'	3.5'
35W MR16 FL 		1,400	4,000	4'	88	2.9'	2.9'	3'	1.7'	101	3.0'	2.5'	3'	3.0'	55	5.0'	3.1'	1'	1.7'	175	4.8'	1.5'
				6'	39	4.4'	4.4'	5'	2.9'	36	5.1'	4.2'	4'	4.0'	31	6.7'	4.1'	2'	3.5'	44	9.7'	2.9'
				8'	22	5.8'	5.8'	7'	4.0'	19	7.1'	5.9'	5'	5.0'	20	8.4'	5.1'	3'	5.2'	19	14.5'	4.4'
				10'	14	7.3'	7.3'	9'	5.2'	11	9.1'	7.6'	6'	6.0'	14	10.1'	6.2'	4'	6.9'	11	19.3'	5.8'
37W MR16 VNSP (I.R.) 		12,500	4,000	8'	195	1.3'	1.3'	7'	4.0'	166	1.5'	1.3'	5'	5.0'	177	1.6'	1.1'	3'	5.2'	174	1.9'	0.9'
				12'	87	1.9'	1.9'	10'	5.8'	81	2.1'	1.8'	7'	7.0'	90	2.2'	1.6'	4'	6.9'	98	2.6'	1.3'
				16'	49	2.5'	2.5'	13'	7.5'	48	2.7'	2.4'	9'	9.0'	55	2.9'	2.0'	5'	8.7'	63	3.2'	1.6'
				20'	31	3.1'	3.1'	16'	9.2'	32	3.4'	2.9'	11'	11.0'	37	3.5'	2.4'	6'	10.4'	43	3.8'	1.9'
37W MR16 NFL (I.R.) 		4,400	4,000	4'	275	1.9'	1.9'	3'	1.7'	318	2.0'	1.7'	3'	3.0'	173	3.1'	2.0'	1'	1.7'	550	2.3'	1.0'
				6'	122	2.9'	2.9'	5'	2.9'	114	3.3'	2.8'	4'	4.0'	97	4.1'	2.7'	2'	3.5'	138	4.8'	1.9'
				8'	69	3.8'	3.8'	7'	4.0'	58	4.6'	3.9'	5'	5.0'	62	5.1'	3.4'	3'	5.2'	61	7.0'	2.9'
				10'	44	4.8'	4.8'	9'	5.2'	35	5.9'	5.0'	6'	6.0'	43	6.1'	4.1'	4'	6.9'	34	9.3'	3.8'
37W MR16 FL (I.R.) 		2,250	4,000	4'	138	2.9'	2.9'	3'	1.7'	159	3.0'	2.5'	3'	3.0'	86	5.0'	3.1'	1'	1.7'	275	4.8'	1.5'
				6'	61	4.4'	4.4'	5'	2.9'	57	5.1'	4.2'	4'	4.0'	49	6.7'	4.1'	2'	3.5'	69	9.7'	2.9'
				8'	34	5.8'	5.8'	7'	4.0'	29	7.1'	5.9'	5'	5.0'	31	8.4'	5.1'	3'	5.2'	31	14.5'	4.4'
				10'	22	7.3'	7.3'	9'	5.2'	18	9.1'	7.8'	6'	6.0'	22	10.1'	6.2'	4'	8.9'	17	19.3'	5.8'
37W MR16 WLF (I.R.) 		1,100	4,000	3'	128	3.1'	3.1'	3'	1.7'	83	4.6'	3.6'	2'	2.0'	102	5.7'	2.9'	1'	1.7'	144	22.3'	2.1'
				5'	48	5.2'	5.2'	5'	2.9'	30	7.6'	6.0'	3'	3.0'	45	8.6'	4.4'	2'	3.5'	36	44.5'	4.2'
				7'	23	7.3'	7.3'	7'	4.0'	15	10.7'	8.4'	4'	4.0'	25	11.4'	5.9'	3'	5.2'	16	66.8'	6.2'
				9'	14	9.4'	9.4'	9'	5.2'	9	13.7'	10.8'	5'	5.0'	16	14.3'	7.4'	4'	6.9'	9	89.1'	8.3'

**Job Information** **Type:**

Lightolier a Genlyte company www.lightolier.com  
 631 Airport Road, Fall River, MA 02720 • (508) 679-8131 • Fax (508) 674-4710  
 We reserve the right to change details of design, materials and finish.  
 © 2006 Genlyte Group LLC • D1106